

INDES 171
MONDAY + WEDNESDAY
INSTRUCTOR
LOCATION

INTERIOR DESIGN STUDIO 01
1:30PM - 4:50PM
MICHAEL CULPEPPER
L110

STUDIO DESCRIPTION

Introduces the fundamental elements and principles of design. Students work with concepts and methods for defining and organizing space and form in the interior environment. Introduces graphic tools, techniques, and conventions used for effective visual communication in design. Applies basic theory in architectural drafting and drawing skills.

STUDIO CONTENT

*Lectures and demonstrations within the design studio environment
Student presentations of design projects
Formal and informal design reviews
Oral presentations throughout the class
Site specific research and sketching*

REQUIRED SUPPLIES

See Seperate Sheet called "Required Supplies" - required by 9/26/12

BOOKS

*Architecture- Form, Space and Order, Third Edition; by Francis D.K. Ching
Color Space Style; by Chris Grimley and Mimi Love*

STUDIO OUTLINE

*Introduction - Articulating Space
Properties of Form
Properties of Space
Form and Space Studies
Organization of Form
Organization of Space
Defining Space through Figure Ground and Solid Void Studies
Three-Dimension Physical modeling
Graphic Representation
Documentation of solid - void studies using architectural conventions
Basic drafting and freehand drawing skills
Graphic communication of ideas and findings*

INTERIOR DESIGN

BELLEVUE COLLEGE
3000 LANDERHOLM CIRCLE SE
BELLEVUE, WA 98007-6484

INTERIOR DESIGN STUDIO 01

INDES 171

INDES 171
MONDAY + WEDNESDAY
INSTRUCTOR
LOCATION

AFTER SUCCESSFUL
COMPLETION, STUDENT
WORK WILL

ACADEMIC HONESTY

INTERIOR DESIGN STUDIO 01
1:30PM - 4:50PM
MICHAEL CULPEPPER
L110

Successfully employ the elements and principles of Design.
Demonstrate the ability to both define and organize space and form.
Demonstrate the ability to draft an accurate plan, section and elevation.
Demonstrate the ability to produce freehand drawings using line weights, thickness, opacity, and precision to present space plans, elevations, and other conceptual sketches.
Demonstrate the ability to produce three-dimensional physical models.

The principle of academic honesty underlies all that we do and applies to all courses at Bellevue College. One kind of academic dishonesty is plagiarism, which may take many forms, including, but not limited to, using a paper written by someone else, using printed sources word-for-word without proper documentation, and paraphrasing or summarizing the ideas of others without acknowledging the source as well as submitting work from a prior class. Plagiarism can also occur when non-written ideas are taken without documentation--using someone else's design or performance idea, for example. In short, plagiarism amounts to intellectual theft--whether or not it was your intention to steal.

Participating in academic dishonesty in any way, will result in severe penalties. Dishonestly produced papers and documents automatically receive a grade of "F" without the possibility of make-up. The Dean of Student Services will also be notified of such conduct.

Individual instructors will clarify documentation requirements for specific assignments. If you have any doubts as to whether you are documenting properly, do not hesitate to consult your instructor.

INTERIOR DESIGN

BELLEVUE COLLEGE
3000 LANDERHOLM CIRCLE SE
BELLEVUE, WA 98007-6484

INTERIOR DESIGN STUDIO 01

INDES 171

INDES 171
MONDAY + WEDNESDAY
INSTRUCTOR
LOCATION

GRADING

INTERIOR DESIGN STUDIO 01
1:30PM - 4:50PM
MICHAEL CULPEPPER
L110

Your final grade in this class will be calculated based on the percentages and numerical values listed below. I will grade each assignment based on outlined project requirements and return it to you in a timely manner as a record of your status in the class. I will hold the grading of attendance, effort and class participation until the end of the quarter to allow for an overall perspective.

LATE WORK WILL NOT BE ACCEPTED GRADED OR COMMENTED ON NO EXCEPTIONS

If you have any questions or concerns about your grades, please schedule an appt. to see me as soon as possible, or stop by my office in L114B. Please be aware that simply attending class and completing the required assignments will not entitle you to an "A" in this class. Doing what is required of you is not outstanding, it is satisfactory and will thus entitle you to a "C" in this class. If you have any questions, please review the grading policy of the school at: <http://bellevuecollege.edu/catalog/enroll/grades.asp>

An "Incomplete" grade may be awarded only in cases where extenuating circumstances have prevented the student from completing no more than one of the projects or tests for the quarter. To be eligible for an "I" grade, the student must have prior approval of the instructor.

Attendance, effort, class participation	10%
Sketching project	5%
Projects 01 thru 03 : Articulating Space	10%
Project 04&05 : Model + Pavilion Drawings	30%
Project 06 : Case Study	5%
Project 07 : Final Project - Making Space	40%

Numeric Grade Scale:	100 - 94 = A
	93 - 90 = A-
	89 - 87 = B+
	86 - 83 = B
	82 - 80 = B-
	79 - 77 = C+
	76 - 73 = C
	72 - 70 = C-
	69 - 60 = D
	< 59 = F

INTERIOR DESIGN

BELLEVUE COLLEGE
3000 LANDERHOLM CIRCLE SE
BELLEVUE, WA 98007-6484

INTERIOR DESIGN STUDIO 01

INDES 171

INDES 171
MONDAY + WEDNESDAY
INSTRUCTOR
LOCATION

STUDIO REQUIREMENTS

INTERIOR DESIGN STUDIO 01
1:30PM - 4:50PM
MICHAEL CULPEPPER
L110

This is a professional program that demands a professional attitude. Your attendance is mandatory. Attendance will be taken at the beginning of class with a sign-in sheet, you are responsible to sign-in at the beginning of each class period. You should be on time for class, as it shows respect for yourself and fellow classmates. If you do miss a class, it is your responsibility, not the instructors, to find out what you missed. Get a classmates contact information now so that you will have someone to contact to find out what you missed.

LATE WORK WILL NOT BE ACCEPTED, GRADED OR COMMENTED ON NO EXCEPTIONS

You should be prepared to present your work at the beginning of every class, your participation in class is required, you all have opinions and I wish to hear them. There are no wrong questions or wrong answers in this class. If you do not understand an assignment, concept or method, it is your responsibility to let me know.

IF A VERBAL PRESENTATION IS PART OF AN ASSIGNMENT, YOU MUST PRESENT IN CLASS IN ORDER TO HAND IN THE ASSIGNMENT. NO ASSIGNMENTS WILL BE ACCEPTED IF YOU HAVE NOT PRESENTED THE WORK IN CLASS AS SCHEDULED

In order for your work to communicate your true intentions it is vital that you bring a complete concept to class each week -whether or not the whole of the project is finished. Your work must be well thought out and appear neat and professional. Good craft is critical.

Anyone dropping this course beyond the time allowed by the college will receive a failing grade and will have to repeat the course at a future time. This is to save everyone wasted time and effort. This is a studio course, and therefore very time and labor intensive. Please be realistic about your class scheduling. [HTTP://BELLEVUECOLLEGE.EDU/ENROLLMENT/CALENDAR/DEADLINES/#FALL-2012](http://bellevuecollege.edu/enrollment/calendar/deadlines/#fall-2012)

*Please be aware of and review all other requirements for both the Arts and Humanities Division and Bellevue College found online at:
<http://bellevuecollege.edu/artshum/AHGdIns-StdntGrwth.htm>
<http://bellevuecollege.edu/artshum/policy.html>*

SAVE THE DATE

October 18th: Greg Tew, Professor of Architecture + Design, Virginia Tech

Get in the know for all important announcements - join listserve. Send an email to id@clublists.bellevuecollege.edu and type subscribe in the subject line. Follow the instructions that will be emailed back to you.

INTERIOR DESIGN

BELLEVUE COLLEGE
3000 LANDERHOLM CIRCLE SE
BELLEVUE, WA 98007-6484

INTERIOR DESIGN STUDIO 01

INDES 171

INDES 171
MONDAY + WEDNESDAY
INSTRUCTOR
LOCATION

ACCOMMODATIONS -
DISABILITY RESOURCE CENTER

SUGGESTED REFERENCE

STUDENT WORK FOR CIDA

INTERIOR DESIGN STUDIO 01
1:30PM - 4:50PM
MICHAEL CULPEPPER
L110

The Disability Resource Center serves students with a wide array of learning challenges and disabilities. If you are a student who has a disability or learning challenge for which you have documentation or have seen someone for treatment and if you feel you may need accommodations in order to be successful in college, please contact us as soon as possible.

If you are a person who requires assistance in case of an emergency situation, such as a fire, earthquake, etc, please meet with your individual instructors to develop a safety plan within the first week of the quarter.

The DRC office is located in B 132 or you can call our reception desk at 425.564.2498. Deaf students can reach us by video phone at 425-440-2025 or by TTY at 425-564-4110 Please visit our website for application information into our program and other helpful links at: www.bellevuecollege.edu/drc

Interior Design Illustrated, Francis Ching

Architectural Graphic Standards, C. Ramsey & H. Sleeper; John Wiley & Sons, Publisher

Modelmaking, Martha Sutherland

Architectural Study Drawings, Daniel M. Herbert

Interior Graphic and Design Standards, S.C. Reznikoff

The Hidden Dimension, E.T. Hall

Bellevue College Interior Design Department reserves the right to collect and keep student work as a part of our ongoing program development and accreditation requirements. Effective fall quarter 2010, faculty will retain selected student work in all courses within the Interior Design curriculum in order to prepare for our next CIDA site visit. We thank you for cooperating with the faculty, and hope you understand it is an honor to have your work held to represent our program. Please note: Student work includes all process work, notebooks, digital images, and all finished projects from the beginning of the quarter through final projects. Students may make arrangements with their instructors to photograph or scan their projects but the college will keep the original work. After the completion of the CIDA site visit in fall of 2012 work will be returned upon request.

INTERIOR DESIGN

BELLEVUE COLLEGE
3000 LANDERHOLM CIRCLE SE
BELLEVUE, WA 98007-6484

INTERIOR DESIGN STUDIO 01

INDES 171

INDES 171
MONDAY + WEDNESDAY
INSTRUCTOR
LOCATION

INTERIOR DESIGN STUDIO 01
1:30PM - 4:50PM
MICHAEL CULPEPPER
L110

RECOGNITION OF SYLLABUS

The syllabus is a contract between the student and instructor, establishing the learning outcomes and context, as well as the expected conduct, rights, and responsibilities of students in this class. It is important that you understand and are prepared for the learning experience ahead by understanding the syllabus contents.

Please sign below, as confirmation that you've read the syllabus and that you will discuss with the instructor any issues that you consider confusing, problematic, or open to dialogue with the entire class. If your discussion is of a personal nature, please make an appointment with me, rather than discuss it during class.

Please print name

Signature

Date

INTERIOR DESIGN

BELLEVUE COLLEGE
3000 LANDERHOLM CIRCLE SE
BELLEVUE, WA 98007-6484

INTERIOR DESIGN STUDIO 01

INDES 171

INTERIOR DESIGN STUDIO 01
MON + WED 1:30PM TO 4:50PM

COURSE SCHEDULE

*(schedule may vary according to student progress -
all changes will be announced in class)*

WEEK 01	09.19 09.17	class lecture assignment	
		DUE class lecture assignment	studio introduction - articulating space sketch books; overview of vertical planes sketching project + project 01 - start in class
WEEK 02	09.26 .09.24	DUE class lecture assignment	PROJECT 01 VERTICAL PLANES class review of work, group crit horizontal planes project 02 - start in class
		DUE class lecture assignment	PROJECT 02 HORIZONTAL PLANES class review of work, group crit organizing principles, drawing tools intro: parallel bars, triangles, etc project 03 - organizing principals intro, drawings, 2D boxes, start in class
WEEK 03	10.03 10.01	DUE class lecture assignment	PROJECT 03 ORGANIZING PRINCIPLES class review of work model making, examples Project 04 - 10x10x10 model, start in class
		DUE class lecture assignment	PROJECT 04 10x10x10 MODEL review 10x10x10 model development Project 04 - revisions + development
WEEK 04	10.10 10.08	DUE class lecture assignment	PROJECT 04 REVISED 10x10x10 MODEL review 10x10x10 models connections, orientation, etc Project 04 - revisions
		DUE class lecture assignment	PROJECT 04 FINAL 10x10x10 MODEL review 10x10x10 model, group crit. Bring measuring tape how to draw a plan Project 05A - plan of your model

INTERIOR DESIGN

BELLEVUE COLLEGE
3000 LANDERHOLM CIRCLE SE
BELLEVUE, WA 98007-6484

INTERIOR DESIGN STUDIO 01

INDEX 171

INTERIOR DESIGN STUDIO 01
MON + WED 1:30PM TO 4:50PM

COURSE SCHEDULE

*(schedule may vary according to student progress -
all changes will be announced in class)*

WEEK 05	10.17 10.15	DUE class lecture assignment	PROJECT 05A PLAN DRAWINGS review plan drawings, group crit how to draw a section - transverse and longitudinal Project 05B - draw 2 section of model
	10.17 10.15	DUE class lecture assignment	PROJECT 05B PLAN AND SECTIONS review plan and sections, group crit how to draw elevations- the 'ideal' view Project 05C - draw (4) elevations of model
WEEK 06	10.24 10.22	DUE class lecture assignment	PROJECT 05C - ELEVATIONS review model + pavillion dwgs.: plan, sections and elevations
	10.24 10.22	DUE class lecture assignment	MIDTERM REVIEW review complete package for model + pavillion
WEEK 07	10.31 10.29	DUE class lecture assignment	library visit intro- sequence of spaces and case study Project 06 -start Case Study
	10.31 10.29	DUE lecture assignment	PROJECT 06 CASE STUDY BOARDS Project 07 - introduction to Making Space concepts and ideas for Final Project
WEEK 08	11.07 11.05	DUE class lecture assignment	MODELS + Sketching Project review concepts of object, development of ideas Project 07 - development of concepts and initial models
	11.07 11.05	DUE class lecture assignment	MODELS review development of concepts and spatial arrangements Project 07 - development

INTERIOR DESIGN

BELLEVUE COLLEGE
3000 LANDERHOLM CIRCLE SE
BELLEVUE, WA 98007-6484

INTERIOR DESIGN STUDIO 01

INDEX 171

INTERIOR DESIGN STUDIO 01
MON + WED 1:30PM TO 4:50PM

COURSE SCHEDULE

*(schedule may vary according to student progress -
all changes will be announced in class)*

WEEK 09	11.14 11.12	DUE class lecture assignment	HOLIDAY - NO CLASS TODAY
		DUE class lecture assignment	MODELS start drawings: plans, sections, elevations Plans, Sections + Elevations

WEEK 10	11.21 11.19	DUE class lecture assignment	PLANS, SECTIONS + ELEVATIONS review model + drawings Project 07 - development
		DUE class lecture assignment	

WEEK 11	11.28 11.26	DUE class lecture assignment	MODEL + DRAWINGS review model and drawings Project 07 - development
		DUE class lecture assignment	FINAL REVIEW PROJECT 7- All Drawings and Final Model Final Review

--	--	--	--

INTERIOR DESIGN

BELLEVUE COLLEGE
3000 LANDERHOLM CIRCLE SE
BELLEVUE, WA 98007-6484

INTERIOR DESIGN STUDIO 01

INDEX 171

INDES 171
MONDAY + WEDNESDAY
INSTRUCTOR
LOCATION

REQUIRED
SUPPLIES

INTERIOR DESIGN STUDIO 01
1:30PM - 4:50PM
MICHAEL CULPEPPER
L110

Staedtler Mars Technico Lead Holder
Staedtler Mars Lead Pointer
Yasutomo Stylist Pens
Black Sakura Micron #005
Black Pentel Sign Pen
Sharpie Extra Fine Point Marker - black
Prismacolor Premier double ended art marker - cool grey 70%
12" Architectural Scale: ENGLISH UNITS ONLY
Drafting dots
Erasers – (1) white Marsplastic and (1) kneaded
Trinagle - 4" - 30°/60°
Adjustable triangle - 10"
Drafting Brush
Roll sketch paper (tracing paper) 18" (or larger) white
Cutting pad: self-healing, ruled surface
X-acto Knife and #11 blades
18" or 24" Metal cork-backed ruler
Spiral bound Sketchbook (6x4)
3/16" Foamboard (any size) white only
Carrying case for required supplied

Not required, but recommend for working at home:

Drafting Board 24 x 36 inches or larger
Parallel bar
Vinyl drafting board cover (Borco)
Task lighting (adjustable drafting lamp)
Comfortable chair



INTERIOR DESIGN

BELLEVUE COLLEGE
3000 LANDERHOLM CIRCLE SE
BELLEVUE, WA 98007-6484

INTERIOR DESIGN STUDIO 01

INDES 171

INDES 171
MONDAY + WEDNESDAY
INSTRUCTOR
LOCATION

SKETCHING
PROJECT

INTERIOR DESIGN STUDIO 01
1:30PM - 4:50PM
MICHAEL CULPEPPER
L110

*Sketches of Cupcake Royale
1111 East Pike Street, Seattle*

*Document through hand sketches both the interior and the exterior,
including design details.*

*All work must be done in your 6" x 4" sketchbook (no loose sketches will
be accepted).*

All sketches must be done on-site.

Drawings can be in either pencil or pen.

Sketches mean rough drawings - quick and fast.

20 + sketches required



INTERIOR DESIGN

BELLEVUE COLLEGE
3000 LANDERHOLM CIRCLE SE
BELLEVUE, WA 98007-6484

INTERIOR DESIGN STUDIO 01

INDES 171

INDES 171
MONDAY + WEDNESDAY
INSTRUCTOR
LOCATION

PROJECT 01

INTERIOR DESIGN STUDIO 01
1:30PM - 4:50PM
MICHAEL CULPEPPER
L110

vertical planes

This first exercise will require you to use a single piece of bristol board in order to define space by means of employing only vertical planes.

Consider System or Method:

The paper can be folded, cut, attached, etc in order to understand space by vertical delineation.

Overall size is not important.

Definition of space is critical.

Good craft is of course required in order to see your work.



INTERIOR DESIGN

BELLEVUE COLLEGE
3000 LANDERHOLM CIRCLE SE
BELLEVUE, WA 98007-6484

INTERIOR DESIGN STUDIO 01

INDES 171

INDES 171
MONDAY + WEDNESDAY
INSTRUCTOR
LOCATION

PROJECT 02

INTERIOR DESIGN STUDIO 01
1:30PM - 4:50PM
MICHAEL CULPEPPER
L110

horizontal planes

This second exercise will require you to use a single piece of bristol board in order to define space by means of employing only horizontal planes.

*Consider systems and methodology:
the paper can be folded, cut, attached, etc in order to understand space by horizontal delineation.*

Overall size is not important.

Definition of space is critical.

Good craft is of course required in order to see your work.



INTERIOR DESIGN

BELLEVUE COLLEGE
3000 LANDERHOLM CIRCLE SE
BELLEVUE, WA 98007-6484

INTERIOR DESIGN STUDIO 01

INDES 171

INDES 171
MONDAY + WEDNESDAY
INSTRUCTOR
LOCATION

INTERIOR DESIGN STUDIO 01
1:30PM - 4:50PM
MICHAEL CULPEPPER
L110

organizing principles

This third exercise will ask you to draw and organize a series of squares arranged in one of the organizing principles.

The squares:

10 @ 1/2" x 1/2"
10 @ 1" x 1"
6 @ 1 1/2" x 1 1/2"
4 @ 2" x 2"

Choose one of the organizing principles:

*centralized
linear
radial
clustered
grid*

Overall composition cannot exceed 10"x10"; definition of space is critical. however, paper should accomodate composition.

Drawings:

*one line drawing equal weights
one line drawing with line weights
two figure ground drawings
initial lay out with hard line pencil on trace
over lay freehand ink for final drawings*

Good craft is of course required in order to see your work.



INTERIOR DESIGN

BELLEVUE COLLEGE
3000 LANDERHOLM CIRCLE SE
BELLEVUE, WA 98007-6484

INTERIOR DESIGN STUDIO 01

INDES 171

INDES 171
MONDAY + WEDNESDAY
INSTRUCTOR
LOCATION

INTERIOR DESIGN STUDIO 01
1:30PM - 4:50PM
MICHAEL CULPEPPER
L110

PROJECT 04

build a model

This fourth exercise will ask you to use foam core and model making materials to build a 3D version of a selected drawing of your choice. Basically, choose a drawing of yours and translate it into a 10" cube

Overall size is 10" x 10" x 10"

Definition of space is critical.

Good craft is of course required in order to see your work.



INTERIOR DESIGN

BELLEVUE COLLEGE
3000 LANDERHOLM CIRCLE SE
BELLEVUE, WA 98007-6484

INTERIOR DESIGN STUDIO 01

INDES 171

INDES 171
MONDAY + WEDNESDAY
INSTRUCTOR
LOCATION

INTERIOR DESIGN STUDIO 01
1:30PM - 4:50PM
MICHAEL CULPEPPER
L110

PROJECT 05

(a) plan, (b) sections + (c) elevations

This fifth exercise will ask you to draw a plan, 2 sections and 4 elevations of your 10x10x10 model and a pavillion located on campus.

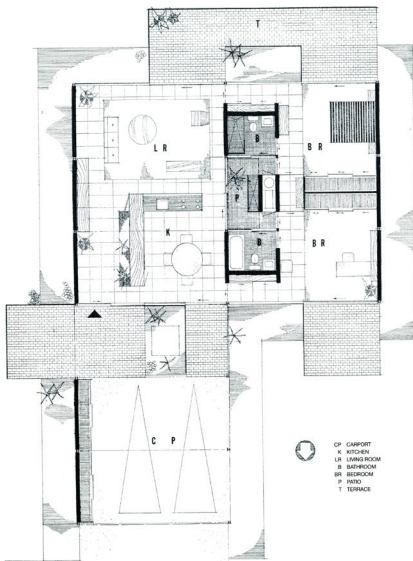
The pavillion will require you to field measure a building and translate that to plan, section and elevation. The 10x10x10 model will be drawn to full scale.

10x10x10 model / drawing full scale 1'- 0" + 1'- 0"

Pavilion 3/4" = 1'- 0"

Lay out to be hard line pencil and final drawings to be freehand ink.

Good craft is of course required in order to see your work.



INTERIOR DESIGN

BELLEVUE COLLEGE
3000 LANDERHOLM CIRCLE SE
BELLEVUE, WA 98007-6484

INTERIOR DESIGN STUDIO 01

INDES 171

INDES 171
MONDAY + WEDNESDAY
INSTRUCTOR
LOCATION

PROJECT 06

INTERIOR DESIGN STUDIO 01
1:30PM - 4:50PM
MICHAEL CULPEPPER
L110

case study

You are asked to present one of the following topics of design through a research of one of the following projects.

Projects dealing with Light:

*Ronchamp by Le Corbusier
L'Institut du Monde Arabe by Jean Nouvel
Kimball Art Museum by Louis I. Kahn*

Projects dealing with Framing:

*Case Study House #21 by Pierre Koenig
Avra Verde by Rick Joy
Chapel on the water at Hokkaido by Tadao Ando*

Projects dealing with Sequence:

*Winton Guest House by Frank Gehry
Villa Savoy by Le Corbusier
Woodland Chapel by Gunnar Asplund*

Projects dealing with Envelope:

*Burnham Anniversary Pavilion by Zaha Hadid
Alice Tully Hall by Diller + Scofidio
Banq by Office DA*



INTERIOR DESIGN

BELLEVUE COLLEGE
3000 LANDERHOLM CIRCLE SE
BELLEVUE, WA 98007-6484

INTERIOR DESIGN STUDIO 01

INDES 171

INDES 171
MONDAY + WEDNESDAY
INSTRUCTOR
LOCATION

PROJECT 07

INTERIOR DESIGN STUDIO 01
1:30PM - 4:50PM
MICHAEL CULPEPPER
L110

sequential space

This final exercise will ask you to create an object that contains a series of spaces. Your object is to be considered habitable, but has no scale. The object or entity is to be dynamic, organized and clearly delineated.

You are asked to provide an experience for a user entering your object. The program is as follows:

An Entry Experience
Primary Space
Transition Experience
Secondary Space

You will need to focus your investigation on one of the following elements of design as a focus while considering the others in the overall:

Light
Framing (of views)
Sequence
Envelope (surface)

Definition, proportion, and organization of space is critical.

Good craft is of course required in order to see your work.



INTERIOR DESIGN

BELLEVUE COLLEGE
3000 LANDERHOLM CIRCLE SE
BELLEVUE, WA 98007-6484

INTERIOR DESIGN STUDIO 01

INDES 171

INTERIOR DESIGN STUDIO 01
1:30PM - 4:50PM
MICHAEL CULPEPPER
L110

BELLEVUE COLLEGE
3000 LANDERHOLM CIRCLE SE
BELLEVUE, WA 98007-6484

INDEX 171