



BELLEVUE  
COLLEGE

# ctcLink November Update

Maria Rivas, ctcLink Project Manager

# Agenda

Overview of project schedule

Overview of OCM Task Force

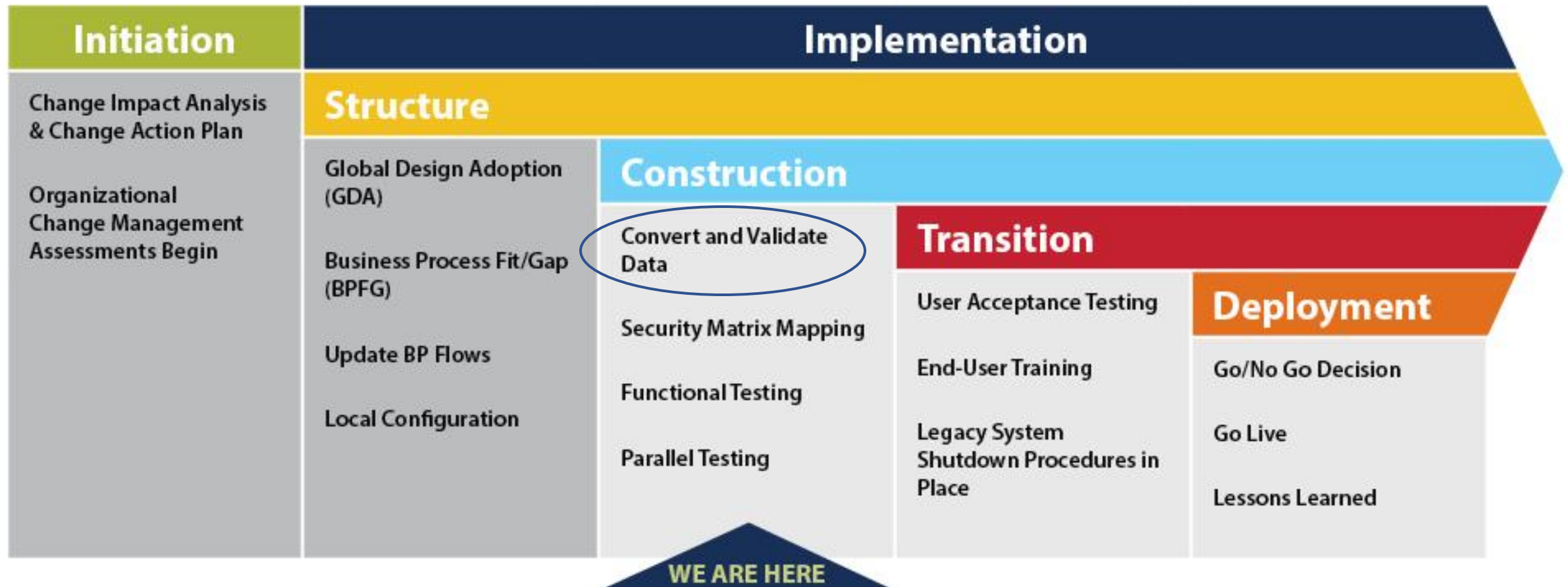
Overview of President's Cabinet presentation

Training Update

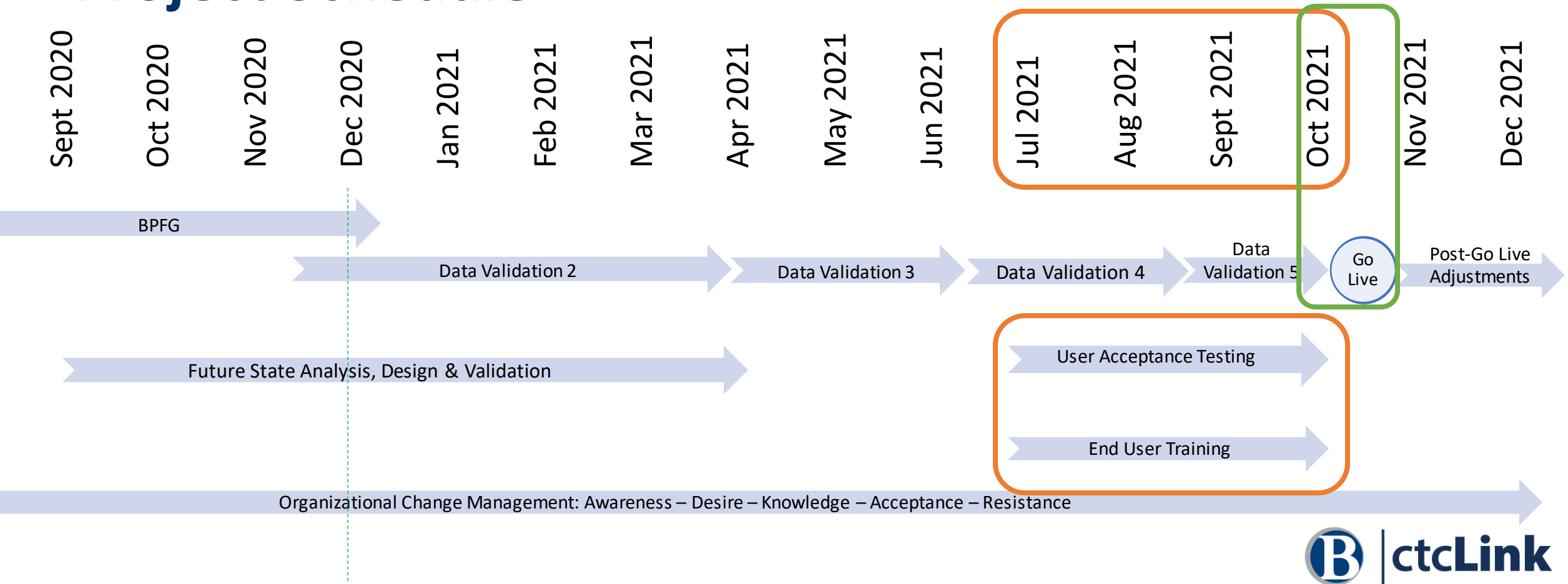
Q&A



# Project Overview



# Project Schedule

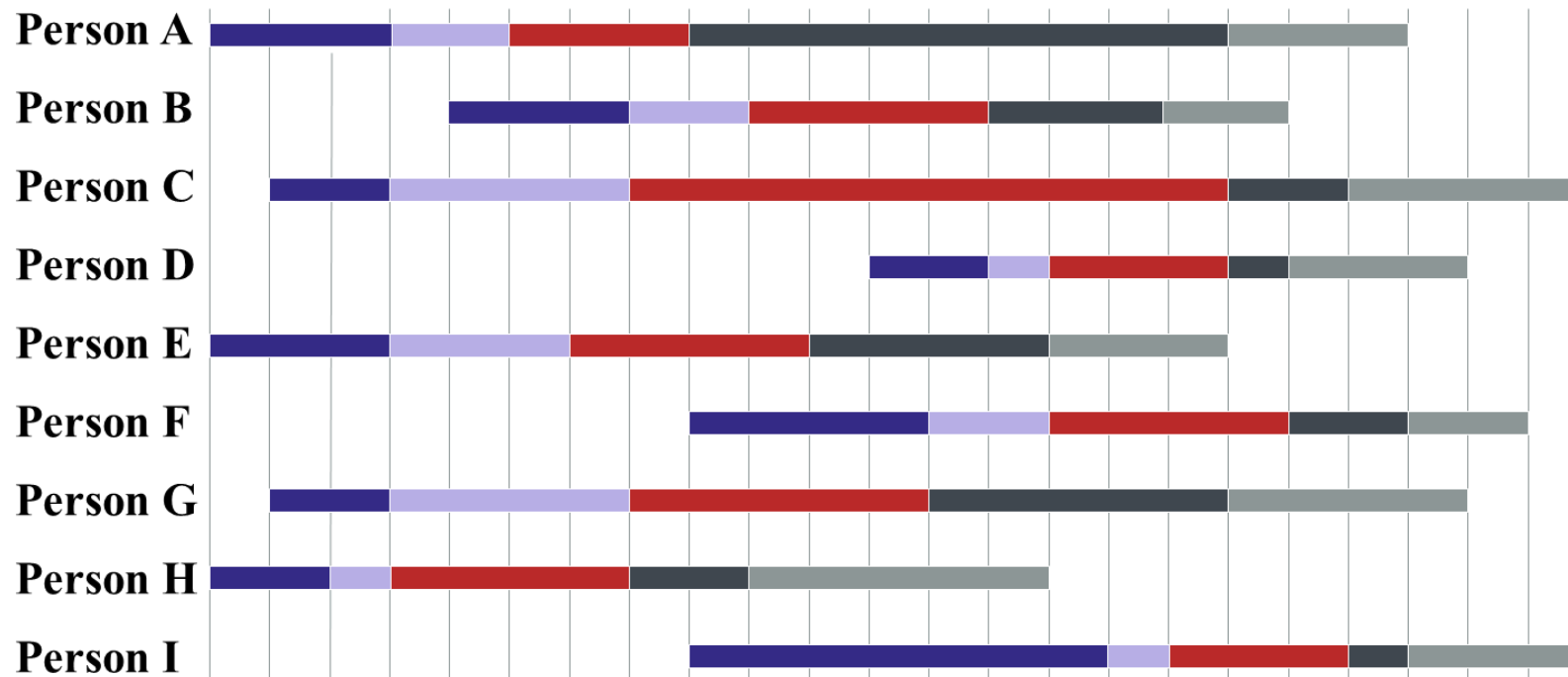


# President's Cabinet Presentation Recap

- Prosci
- Sponsorship
- Sponsor guide and Manager guide

# Organizational Change Management & Prosci

■ Awareness ■ Desire ■ Knowledge ■ Ability ■ Reinforcement



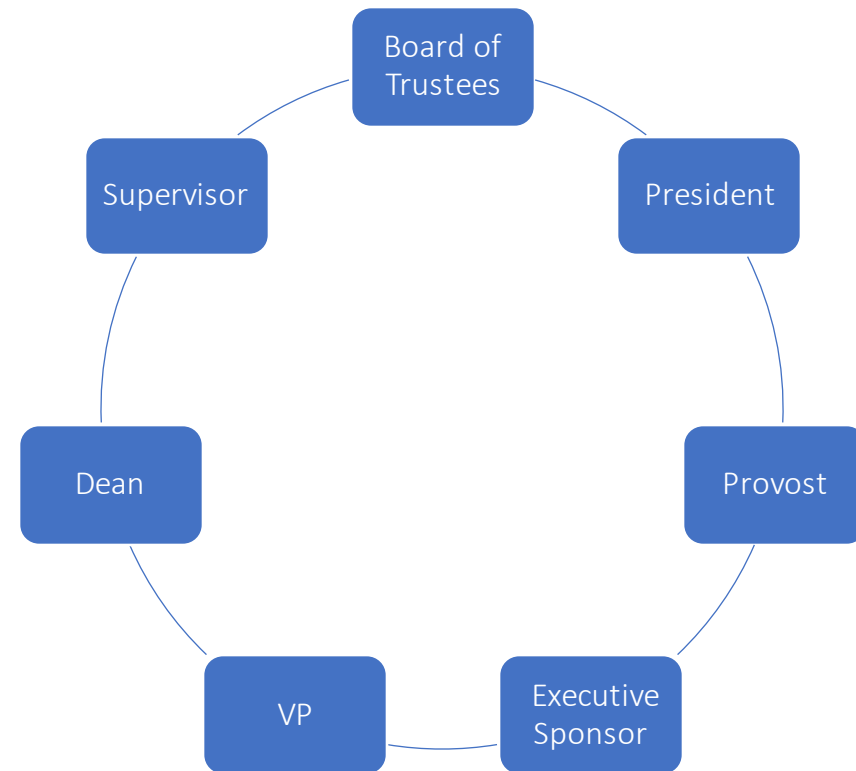
# Sponsorship



# Q: Who are our ctcLink Sponsors?

A: Anyone who is supportive of ctcLink and promotes the change with their actions, behaviors and conversations

- Managers
- Deans
- VPs and AVPs
- President
- Board of Trustees

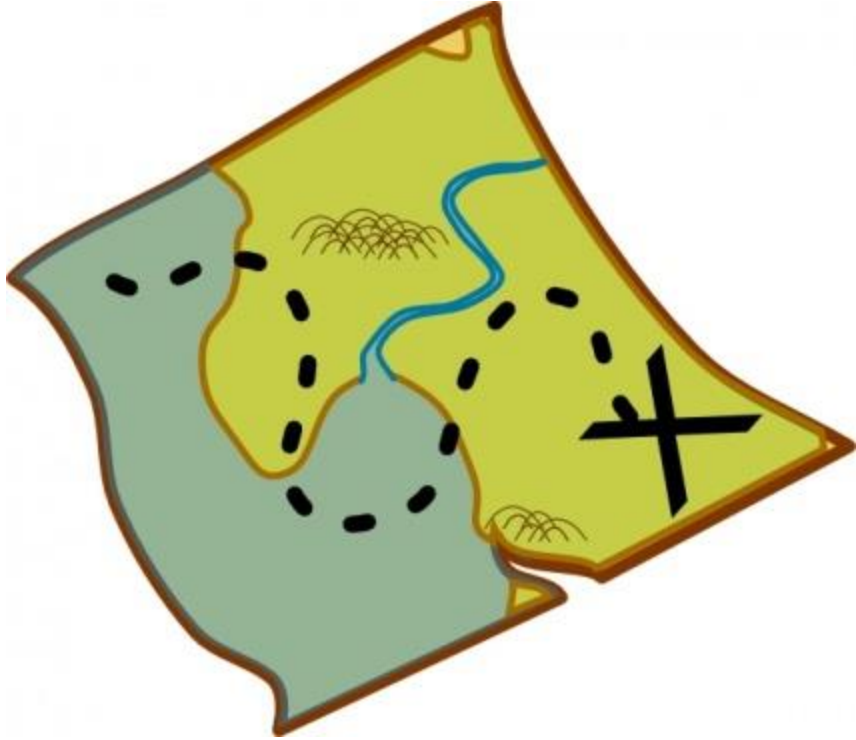




# The ctcLink Sponsor duties

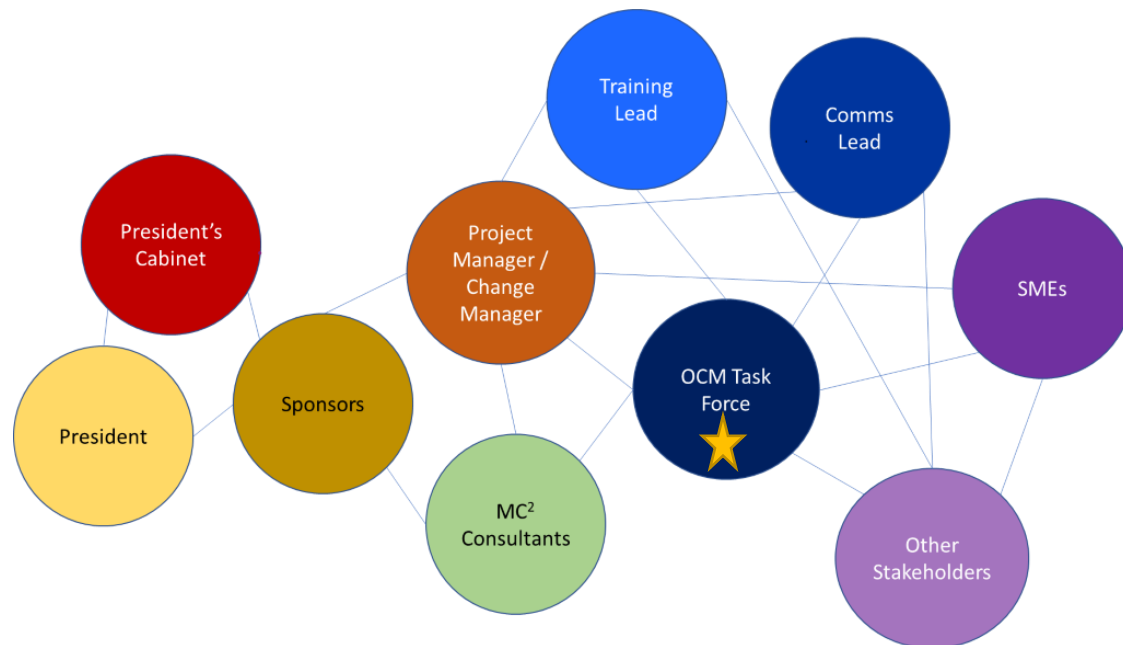
- Actively engage
- Visibly present
- Connect directly at all levels
- Reinforce key messages
- Remove barriers
- Provide resources and set aside time
- Accessible, approachable and available

# Sponsorship & Manager Guides

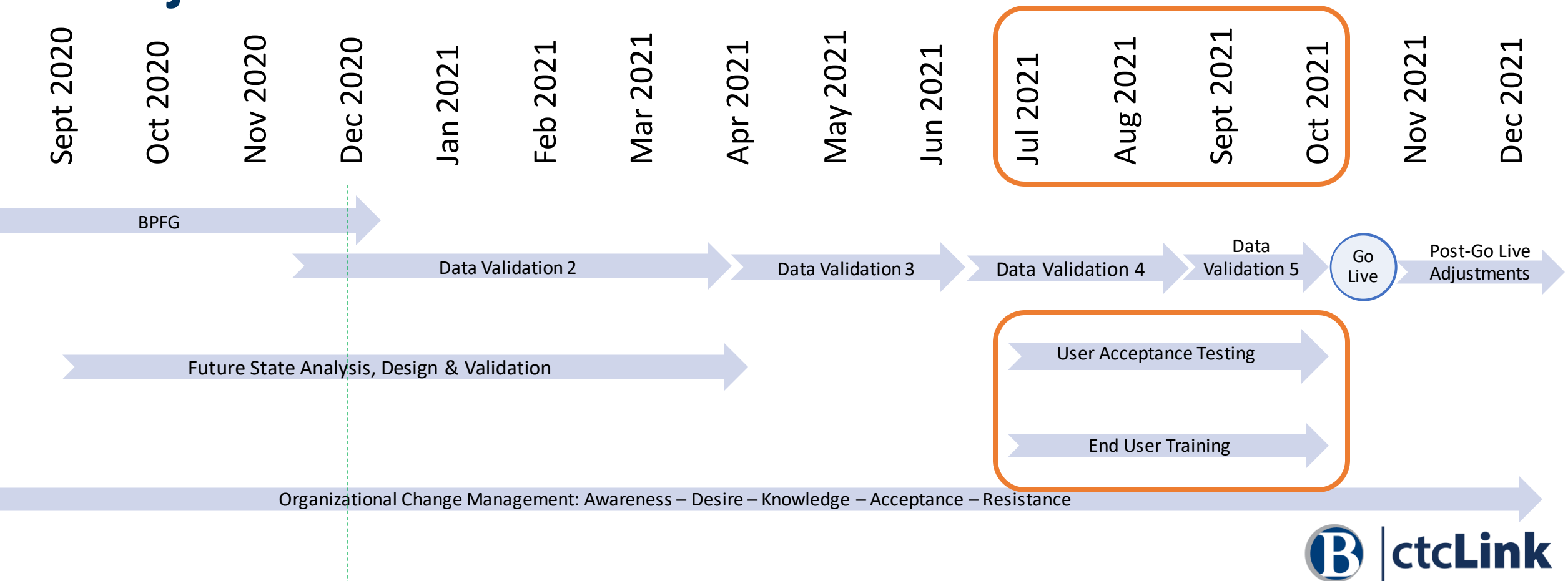


# OCM Task Force

- Members from each major department on campus connected to the HP
- Focus on the people side of change
- Support individualized departments throughout the project



# Project Schedule



# Q&A

## **Resources**

BC's ctcLink website: [www.bellevuecollege.edu/ctcLink](http://www.bellevuecollege.edu/ctcLink)

ctcLink Reference Center: <http://ctclinkreferencecenter.ctclink.us>

## **Contact**

Maria Rivas: [Maria.Rivas@bellevuecollege.edu](mailto:Maria.Rivas@bellevuecollege.edu)

ctcLink Project Team: [ctcLink@bellevuecollege.edu](mailto:ctcLink@bellevuecollege.edu)