

Summer 2014 • Credit Class Schedule • July 1 – August 14

BELLEVUE

C O L L E G E

Enroll Kids Now in
BC Summer Camps, p. 3

See eLearning Options, p. 22

Learn about BC's Bachelor Degrees, *back cover*

www.bellevuecollege.edu



BELLEVUE
COLLEGE



General Information

BC's Vision, Core Values & Mission	2
College Announcements	2
BC Highlights	3

Admission Information

Getting Started: Admissions, Registration, Assessment, Advising & Orientation.....	4
Academic Calendar	5
Tuition, Fees & Related Policies	6
Final Exam Schedule, Grades & Graduation	7
Students Right To Know.....	8

Course Information

Credit Classes	9-21
Distance Ed/eLearning Classes.....	22-23
Flexible Options	24-25
Degree & Certificate Options.....	26
Worker Retraining	27
Continuing Education	28
EWU@BC	29
Bachelor's Degrees	Back Cover

Campus Resources

Contact Us	30
Main Campus Map.....	31

BELLEVUE

(USPS 5714) is published quarterly by:
Bellevue College
3000 Landerholm Circle SE
Bellevue, WA 98007-6484.

PERIODICALS postage paid at Bellevue, WA,
and additional mailing offices.

Postmaster: Send address changes to: Printing Services
Bellevue College
3000 Landerholm Circle SE
Bellevue WA 98007-6484.



Vol. XII, No. 3
Printed on recycled paper.



BELLEVUE
COLLEGE

Vision

Bellevue College is the region's college of choice, based on its excellence, innovation, and national recognition for exemplary programs.

Core Values

We, the Board of Trustees, faculty, staff, and administration of Bellevue College, place students at the center of all we do and support and promote the excellence of their efforts. We affirm and embody pluralism; value collaboration and shared decision making; and honor creativity and innovation. We consider it our duty to anticipate changing demands in education and welcome the opportunity to shape its future. We acknowledge our responsibility to society and embrace the belief that widespread access to excellent postsecondary education is the cornerstone of a democratic society.

Mission

BC is a student-centered, comprehensive and innovative college, committed to teaching excellence, that advances the life-long educational development of its students while strengthening the economic, social and cultural life of its diverse community. The college promotes student success by providing high-quality, flexible, accessible educational programs and services; advancing pluralism, inclusion and global awareness; and acting as a catalyst and collaborator for a vibrant region.

Board of Trustees..... Marie Gunn, Chair – Bellevue
..... Steve Miller, Vice Chair – Bellevue
..... Lisa Chin, Member – Bellevue
..... Merisa Heu-Weller, Member – Bellevue
..... Vicki Orrico, Member – Bellevue
..... Takhmina Dzhuraeva, Student Trustee

College President Dr. David L. Rule

College Announcements

Emergency Closure: BC will cancel on-campus classes and close its offices if severe weather or emergency conditions make the campus unsafe. Call (425) 401-6680 for a recorded message about the closure status of the college. Emergency closure information is also posted at www.bellevuecollege.edu/status/, and www.schoolreport.com, and normally announced over local radio and TV stations. Online courses will continue as scheduled even when the college's physical campus is closed.

Changes in Schedule Information: Every effort is made to ensure that information in this publication is accurate. Changes to courses may occur after printing. Unforeseen changes in funding, staffing, curricula, or policies may require the college to change provisions of the Credit Class Schedule or Course Catalog, or to add or withdraw courses, without prior notice. For continually updated information, go to www.bellevuecollege.edu and click on "Classes." Comments about this publication may be sent to sharon.berg@bellevuecollege.edu.

Equal Opportunity/Antidiscrimination: Bellevue College does not discriminate on the basis of race or ethnicity; creed; color; national origin; sex; marital status; sexual orientation; age; religion; genetic information; the presence of any sensory, mental, or physical disability; gender identity or veteran status in educational programs and activities which it operates. Please visit www.bellevuecollege.edu/equal/.

Editor Sharon Berg, Publications & Communications Manager
Designer Robyn Bell-Bangerter, Senior Graphic Designer

Now Enrolling...



SUMMER CAMPS

Summer provides tots through teens special opportunities to have fun while they learn. Take advantage of these summer offerings:

BC Summer Kids Camp offers fun learning activities such as creative art experiences, music, movement, and hands-on discovery for children 3-6. Six sessions run Monday through Thursday, June 23 – August 7, 9:30 a.m. to noon (no camp June 30-July 3). Visit the Parent Education website at www.bellevuecollege.edu/parented/classes/enrichment-programs/summer/ for more details.

BC Summer Baseball Camps for 7–8, 8–10, and 10–12 year olds are offered late June through August, running Mon-Thu from 9 am to 3 pm. Camps are usually filled by July, so applicants are encouraged to register

before the school year ends. Call (425) 564-2356 or visit www.bellevuecollege.edu/athletics/Baseball/Camps.html for more details.

BC Summer Science Camp for 5th and 6th grade students takes place August 18-22. There will be two separate sessions, one held in the morning and one in the afternoon. Go online at scdiv.bellevuecollege.edu/SciCamp/ for more information.

BC Summer Program for Teens from 12–17 years old offers classes in Art, Self Defense, Study Skills, Interior Design, Writing, Photography, Computers and many more. Classes run July 7th–August 15th and begin and end during the summer to make it convenient to take multiple classes throughout the summer or plan around other activities. For more information, visit www.gotobcc.com/summer/ or call (425) 564-2263.

BC Hosts International Scholar from China

Bellevue College in January welcomed Dr. Liu Yi from Donghua University in Shanghai, China, as our international scholar in residence. Lui Yi is the recipient of a one-year scholarship from the Chinese government and she chose BC for the location of her in-residence research.

Her decision to select BC followed a meeting with Tom Nielsen, Vice President of Instruction, Michael Culpepper, Interior Design program director, and Cris Samia, BC's International Student Programs director, during their visit to Shanghai last October. The visit's purpose was to establish relationships related to BC's Interior Design program as part of a tour of several colleges in the region. Nielsen said Lui Yi's stay in Bellevue is "an unexpected, but extremely fortunate result of the trip."

Lui Yi, who has an office in BC's Institute for Business and Information Technology (IBIT), is currently co-teaching Business 101 with BC faculty member Irene Ferrante. In the coming months, Yi may accept other teaching assignments and is available to provide guest lectures and will participate in other college activities throughout the year.

Lui Yi is Deputy Director of the Department of Public Management at Donghua University and serves as Associate Professor for the Public Administration department and has taught courses in Management Science, Etiquette Science, Government Performance Management, Business Administration and Secretarial Science. She has led many research projects, been the recipient of several awards, published numerous scholarly articles and authored books in her area of expertise.

Credit for Prior Learning Options Expanding

State colleges, including Bellevue College, have offered credit for prior learning for many years, but recent legislation calls for colleges to offer more options.

Expansion will increase the number of adult students completing certificates, degrees and credentials. Prior Learning Assessment (PLA) will reduce the cost of a degree by awarding course credits for knowledge and skills developed through prior learning through work and life experience; through military training and experience; and through formal and informal education and training from in-state and out-of-state institutions including foreign institutions.

Prior learning assessment (PLA) is the process used to evaluate previous life experience for academic credit, accomplished in several ways, including standardized tests, course challenge examinations, portfolio assessment, and crosswalks between work-based learning and college courses.

Andy Brucia, BC's PLA coordinator, helps BC better serve our adult students. If you have questions about assessment of prior learning, you can contact Brucia via his personal campus e-mail, a.brucia@bellevuecollege.edu, or via the PLA-dedicated email address pla@bellevuecollege.edu.



Your First Time Going to College?

Step 1: Apply for Admissions

Apply at www.bellevuecollege.edu.

Step 2: Assess English and Math Skills

Take the assessment at the Assessment Office, 1st floor, L bldg.

- Bring your BC SID#, a valid photo ID and a credit/debit card or check to pay fee.
- No appointment needed. Just drop-in. Go to www.bellevuecollege.edu/enrollment/assessment to view the assessment schedule.
- The assessment is not timed, but plan for about 2-3 hours.

Step 3: Sign-up to Attend a New Student Group Advising Session

You are required to receive academic advising prior to registering for classes. Visit depts.bellevuecollege.edu/advising/ or call (425) 564-2212 to learn more about your advising session and to sign up for an available day and time. You will need to bring your BC SID# and assessment scores to your session.

Step 4: Register for your Classes and FYE

You will receive assistance with online registration immediately following your advising session. There are two freshman student success programs: The Comprehensive Success Initiative (CSI) and the First Year Experience (FYE). Your advisor will help you identify into which one you are required to enroll if you will be attending BC during Fall Quarter as well.



@ Bellevue College

Step 5: Pay Your Tuition

Tuition and fees must be paid within seven calendar days after registration, or by the first day of the quarter, whichever comes first. Once the quarter begins, payment is due immediately at the time of registration.

Need Help With Registration?

Visit the website at:

www.bellevuecollege.edu/enrollment/registration/help/

for step-by-step directions or come to the Registration Office in the Student Services Building.

Transferring-in or have Prior College Experience?

Step 1: Apply for Admissions

Previous BC students who have been absent for four or more quarters must re-apply at www.bellevuecollege.edu.

Step 2: Determine Completion of Prerequisites and English/Math Placement

- **Prerequisites:** If you have taken courses from another institution that meet our course prerequisites, visit www.bellevuecollege.edu/enrollment/transfer/prerequisites to learn about the procedure to clear prerequisites for registration purposes.
- **Math and English:** If you have not completed a 100-level math and/or English course, take the skills assessment prior to meeting with an advisor. Learn more at: www.bellevuecollege.edu/enrollment/assessment/testing/.

Step 3: Meet with an Academic Advisor

While meeting with an academic advisor is recommended, it is not required. Academic advisors provide an unofficial review of your previous credits and assist with course selection.

University Transfer Advising:

- Business transfer, (425) 564-2212 or go to B232
- Science, Computer Science, Pre-med, and Engineering transfer, (425) 564-2321 or go to L200
- All other university transfer majors, (425) 564-2212 or go to B232

Professional Technical Advising (career preparation programs):

- Nursing and public health related, (425) 564-2012 or go to R130
- Radiation and Imaging Programs, (425) 564-2316 or go to A251
- IT and Business related, (425) 564-2311 or go to A254

For Advising Center Hours visit: www.bellevuecollege.edu/advising/.

Step 4: Register for Classes

Register for classes on or after your registration time at www.bellevuecollege.edu.

Step 5: Pay Your Tuition

Tuition and fees must be paid within seven calendar days after registration, or by the first day of the quarter, whichever comes first. Once the quarter begins, payment is due immediately at the time of registration.

C A L E N D A R

May 2014

Sun	Mon	Tue	Wed	Thu	Fri	Sat
				1	2	3
4	5	6	7	8	9	10
11	12	13	14	15	16	17
18	19	20	21	22	23	24
25	26 HOLIDAY	27	28	29	30	31

June 2014

Sun	Mon	Tue	Wed	Thu	Fri	Sat
1	2	3	4	5	6	7
8	9	10	11	12	13	14
15	16	17 Finals	18 Finals	19 Finals	20 Commencement	21
22	23	24	25	26	27	28
29	30	June 20: Commencement				

July 2014

Sun	Mon	Tue	Wed	Thu	Fri	Sat
		1 Summer Qtr Begins	2	3	4 HOLIDAY	5
6	7	8	9 Count Day	10	11	12
13	14	15	16	17	18	19
20	21	22	23	24	25	26
27	28	29	30	31		

August 2014

Sun	Mon	Tue	Wed	Thu	Fri	Sat
					1	2
3	4	5	6	7	8	9
10	11	12	13	14 Finals Qtr Ends	15	16 POWER DOWN
17	18	19	20	21	22	23
24 31	25	26	27	28 Last Day Extended Summer Qtr	29	30

SUMMER 2014 College Calendar for Credit Students

Enrollment dates for the whole year are online at:

www.bellevuecollege.edu/enrollment/calendar

For the latest information, go to:

www.bellevuecollege.edu

Web Registration Hours

Monday – Friday 6:00 am – midnight

Saturday 6:00 am – 11:59 pm Sunday

Enrollment & Registrar Services Summer Hours

July 1-3		Beginning July 7	
Monday – Thursday	7:30 am – 6:00 pm	Monday & Thursday	8:00 am – 5:00 pm
		Tuesday & Wednesday	8:00 am – 6:00 pm
		Friday	8:00 am – 12:00 pm

**Hours are subject to change.*

May 2 Students in bachelor degree programs begin registration

May 5 **CONTINUING STUDENTS** begin to register by appointment

May 12 **NEW** and **FORMER CREDIT STUDENTS** who apply for admissions by 5/1/14 begin to register by appointment

May 26 **HOLIDAY** – college closed

May 27 Bookstore - First day to order Summer Quarter textbooks online

June 1 Fall quarter graduation application due

June 2 Bookstore – Summer Quarter textbooks available for purchase in store

June 17-19 Spring Quarter Final Exams

June 20 **COMMENCEMENT**

July 1 **SUMMER QUARTER INSTRUCTION BEGINS**

July 2 Last day to add classes without instructor permission

July 2 Space-available waivers registration (in state-supported classes only) – senior citizens (age 60+) & BC employees start at 8:00 a.m.; other eligible state employees start at noon

July 3 Last day to withdraw with 100% tuition refund – in person by 6:00 p.m. or online by midnight

July 3-9 Blue card from instructor is required for registration; tuition & fees payment due at the time of registration (online classes request permission by e-mailing the instructors)

July 4 **HOLIDAY** – college closed

July 7 Bookstore – last day for 100% refund on Summer Quarter textbooks

July 9 Last day to change letter-graded course to Pass/Fail or Audit or to change credit count in a variable-credit course (in-person only) by 6:00 p.m.

July 9 Last day to withdraw from a course without a “W” posted to the transcript – in person by 6:00 p.m. or online by midnight

July 10 Red permission card from instructor and per-class late registration fee goes into effect; payment is due at the time of registration

July 11 Last day to withdraw from classes with 50% tuition refund – in person by 12:00 p.m. or online by midnight

July 28 Last day to withdraw from a class – in person by 5:00 p.m. or online by midnight (“W” will be posted on the transcript)

Aug 11-14 Bookstore Buyback and **FINAL EXAMS**

Aug 14 **SUMMER QUARTER ENDS**

Aug 19 Grades posted to student transcripts



Create your BC student e-mail account today!
It's free and easy to do!

All official college communication will only be sent to your BC e-mail. Don't miss important messages, notices, & announcements from the college.

To create your account, go to: www.bellevuecollege.edu/netid

College Tuition and Fees

The chart below shows the 2013-2014 basic tuition for state- and self-supported courses per credit per quarter for residents and non-residents. Additional fees are described below. For the most up-to-date tuition rates and fees, please visit: www.bellevuecollege.edu/enrollment/tuition/.

# Credits	Lower Division Courses (299 & below)		Upper Division Courses (300 & above)		
	Resident Tuition	Non-Resident Tuition	Resident/Non-Resident (Self-Support)*	Resident (State-Support)*	Non-Resident (State-Support)*
1	\$106.84	\$278.84	\$245.45	\$245.45	\$598.42
2	213.68	557.68	490.90	490.90	1,196.84
3	320.52	836.52	736.35	736.35	1,795.26
4	427.36	1,115.36	981.80	981.80	2,393.68
5	534.20	1,394.20	1,227.25	1,227.25	2,992.10
6	641.04	1,673.04	1,472.70	1,472.70	3,590.52
7	747.88	1,951.88	1,718.15	1,718.15	4,188.94
8	854.72	2,230.72	1,963.60	1,963.60	4,787.36
9	961.56	2,509.56	2,209.05	2,209.05	5,385.78
10	1,068.40	2,788.40	2,454.50	2,454.50	5,984.20
11	1,121.39	2,846.40	2,699.95	2,464.38	5,994.77
12	1,174.38	2,904.40	2,945.40	2,474.26	6,005.34
13	1,227.37	2,962.40	3,190.85	2,484.14	6,015.91
14	1,280.36	3,020.40	3,436.30	2,494.02	6,026.48
15	1,333.35	3,078.40	3,681.75	2,503.90	6,037.05
16	1,386.34	3,136.40	3,927.20	2,513.78	6,047.62
17	1,439.33	3,194.40	4,172.65	2,523.66	6,058.19
18	1,492.32	3,252.40	4,418.10	2,533.54	6,068.76
19 & Over	(1)	(2)	(3)	(4)	(5)

Tuition for Lower Division Courses (299 & below)

- (1) Residents pay \$1,492.32 for 18 cr + \$96.26 additional per credit beyond 18
- (2) Non-Residents pay \$3,252.40 for 18 cr + \$268.26 additional per credit beyond 18

Tuition for Upper Division Courses (300 & above)

- (3) \$4,418.10 for 18 cr + \$245.45 additional per credit beyond 18
- (4) \$2,533.54 for 18 cr + \$234.87 additional per credit beyond 18
- (5) \$6,068.76 for 18 cr + \$587.84 additional per credit beyond 18

*Self-Support degrees currently include Health-care Technology & Management, Information Systems & Technology, Interior Design, and Nursing. State-Support degrees currently include Radiation & Imaging Sciences.

Course Fees

In addition to the above tuition, mandatory fees include:

- A comprehensive fee of \$1.50 per credit with a \$15.00 maximum
- A commute reduction fee of \$1.70 per credit with a \$17.00 maximum.
- A technology fee of \$3.50 per credit 1-10 credits and \$3.50 per credit beyond 18 credits.
- An environmental sustainability fee of \$1.00 per credit with a \$10. Maximum.
- Certain courses require fees for laboratory use, licensing, and other costs. These fees are identified in the class schedule

Fee for Distance Ed/eLearning Courses

Online courses have a per class fee that pays for hardware, software and licensing. For details, visit www.bellevuecollege.edu/distance/tuition/.

Residency for Tuition Purposes

If you are classified as a non-resident and would like to know how to become eligible to pay resident tuition, please call the Residency Office at (425) 564-4143 for information, or go online to www.bellevuecollege.edu/enrollment/admissions/eligibility. Note: Non-resident students enrolled in **only online classes** may be eligible for a tuition reduction. For more information, please call (425) 564-2222 or email enrollment@bellevuecollege.edu and ask about the "Distance Education Waiver".

Costs for Self-Support Programs

Tuition for Self-Support Programs

(ie: Upper division Interior Design, lower level Alcohol & Drug Counseling, Fire Science, etc.)

Some programs are self-supporting – that is, they do not receive state funding. They have their own tuition structures and do not grant tuition and fee waivers. In these programs you pay the full fee, regardless of your residency status. Self-support fees are listed with courses in the quarterly class schedule.

Self-support programs (except bachelor's programs) charge the same amounts for residents and non-residents. Self-support bachelor's degree students pay \$245.45 per credit for all credits beyond 18.

For details of each fee, please visit www.bellevuecollege.edu/enrollment/tuition/.

Fee for Continuing Education Courses

Fees for Continuing Education classes are listed in the quarterly Continuing Education schedule. Residency in Washington State is not required for some of these classes; in these cases, all students are charged the same stated fees regardless of residency status.

Payment Information

Tuition and fees must be paid within seven (7) calendar days from the first day you register for classes OR by the first day of the quarter, whichever comes first. Classes may be dropped by the Registration Office for non-payment. Adding then dropping and re-registering for the same class before the quarter begins does not extend or renew the seven (7) original calendar days. **Registrations on or after the first day of the quarter require immediate payment at the time of registration.** If you register after the open registration period published in the academic calendar, you must obtain permission from the instructor to enroll. You are responsible for learning the exact amount of tuition and fees due.

Find this information from your class schedule online at www.bellevuecollege.edu/services/schedule.asp.

You may pay your tuition and fees by VISA or MasterCard online at <https://www.ctc.edu/~bellevue/wccba/waci600.html> or at the cashier's office in the Student Services Building. You may pay by check through the mail, or by check or cash at the cashier's office. You are responsible for verifying that payment has been made; for example, if you are receiving financial aid that comes directly to the college.

Refunds for College Withdrawal or Dropped Classes

If you withdraw from the college or drop classes, you may be eligible for a refund. The college begins to process refunds after the fifth day of classes. A processing fee is deducted from the refund amount. The amount refunded is based on your withdrawal or drop date for courses that begin the first week of the quarter. See calendar (p. 5) for deadlines for 100% and 50% refunds. Classes with alternate start and end dates are governed by a different refund policy. The information is available on the Enrollment Calendar at www.bellevuecollege.edu/enrollment/calendar/deadlines/. If the college drops you from classes for disciplinary reasons you will not be eligible for a refund. Some fees are identified as nonrefundable in the class listings. Self-supporting programs may have different refund policies. Contact the program office for details. Refunds under \$25 will not be processed but will be applied to the next academic quarter. Visit www.bellevuecollege.edu/enrollment/tuition/ for more information about refunds.

Drop for Non-Payment

Non-payment of tuition and course-related fees (including returned check and/or credit cards) may result in the student being withdrawn from some or all classes. (BC Policy 7250). A withdrawal fee will be charged if you have ever been dropped for non-payment in the past. Returned checks and/or credit card charges are assessed a fee.

Admission to or registration for classes, conferring of degrees, and issuance of academic transcripts may be withheld for failure to meet financial obligations to the college and may result in the account being sent to a collection service (BC Policy 5150). All collection fees are the responsibility of the check/credit card writer and/or the student. If a student writes three checks (including third-party checks) which are returned, his/ her privilege of check-writing will be denied.

Transcript Fee

A fee will be charged for official transcripts. For instructions on ordering transcripts, call (425) 564-2222 or go to www.bellevuecollege.edu/enrollment/records/.



Final Examination Schedule

THE FINAL EXAMINATION SHALL MAKE UP NO MORE THAN 33% OF YOUR GRADE.

Summer Quarter final exams are given on the last regularly-scheduled class date unless otherwise arranged with the approval of the Office of Instruction.

Grades

Official grades are available approximately one week after the quarter ends. There are several ways to access your grades:

- BC website: www.bellevuecollege.edu/services/schedule.asp
- Kiosk in the Student Services Building or the Campus Information Center;
- In person at Enrollment & Registrar Services.

Graduation

Graduation applications are available at Enrollment & Registrar Services or online at www.bellevuecollege.edu/enrollment/graduation/.

If you wish to receive your degree or certificate, you must file an application and pay the required fee by the due date in the following table. The application fee for an associate degree or a certificate of achievement (requiring 45 credits or more) is \$21.50, and the fee for a bachelor degree is \$33.00.

Expected Graduation:	Application Due:
Fall Quarter	June 1
Winter Quarter	October 10
Spring Quarter	December 10
Summer Quarter	March 15

BEAT THE CROWDS!

Make your appointment **NOW**, with an academic advisor for assistance in selecting your classes and creating an academic plan for degree completion! Stop by the Advising Center in Student Services or call (425) 564-2212 to make an appointment.



Spend your money on fun, not fines!



Don't get caught unprepared this Summer Quarter when all Spring student permits expire!

Purchase your new parking permit for Summer Quarter at:
www.bellevuecollege.edu/publicsafety/parking/

State Support for Community & Technical College Students

Through *Opportunity Pathways*, Washington State provides a variety of financial aid programs to help students and their families pay for college. Pursuant to RCW 28B.15.0681, the following table indicates average state support by tuition category for students attending community and technical colleges for the academic year 2012-2013.

	Resident Undergraduate	Nonresident Undergraduate
Total Instructional Support Per FTE Student	\$6,282	\$6,282
(Less Operating Fees Paid)	(\$3,217)	\$8,052
Net State Support Per FTE Student	\$3,065	—

The following table indicates the amount of state supported financial aid including that provided from the local institutional financial aid fund (3.5%)

	Resident Undergraduate	Nonresident Undergraduate
State Financial Aid	\$861*	\$0**
Institutional Financial Aid	\$94	\$0**

*Includes State Work Study, State Need Grant, and all other financial aid programs administered by the WSAC, and SBCTC administered programs: Opportunity Grants and Worker Retraining Financial Aid. **State and Institutional financial aid is not available to nonresidents.

Note: Data source provided by the State Board for Community and Technical Colleges is available upon request.

Student Confidentiality/Records: FERPA

Notice is hereby given that all students at Bellevue College are protected by the Family Educational Rights and Privacy Act (FERPA), of 1974. The college has adopted institutional procedures in compliance with Public Law 93-380, FERPA. Your privacy is protected with certain restrictions on the disclosure of your student educational records and information. You have the following rights, protection and privacy of your educational records at Bellevue College.

- 1) The right to inspect and review your student education records within 45 days, the college receives a written request for access. Students must submit a written request to the Registrar identifying the record(s) they wish to inspect.
- 2) The right to request the amendment of the student's educational records the student believes inaccurate. A written request identifying the records in question and justification of why it is inaccurate must be sent to the Registrar.
- 3) The right to consent to disclosures of personally identifiable information contained in the student's educational records, except to the extent that FERPA authorizes disclosure without consent. The college will disclose the following directory information (name of student, degree or certificate awarded, dates of attendance, athletic statistics, scholarships received, membership or position in BC student government or honor society, part-time or full-time student status, previous schools attended, BC e-mail address.) Exceptions to disclose includes those records requested by subpoena, in emergency situations, in compliance with the Solomon Amendment (Military requests), Department of Education requests, IRS Hope Scholarship and Lifetime Learning tax credit programs and information provided to the National Student Clearinghouse. Students may request through written notice, that the college does not release directory information at the Student Services Office.
- 4) The right to file a complaint with the US Department of Education concerning alleged failures by Bellevue College to comply with the requirements of FERPA. The name and address which administers FERPA is:

Family Policy Compliance Office, US Department of Education
400 Maryland Avenue, SW, Washington DC 20202-4605

Limitation of Liability

The college's total liability for claims arising from a contractual relationship with the student in any way related to classes or programs shall be limited to the tuition and expenses paid by the student to the college for those classes or programs. In no event shall the college be liable for any special, indirect, incidental, or consequential damages, including but not limited to, loss of earnings or profits.

Student Right to Know/ Federal Graduation Rate Survey (GRS) Information**

Federal Graduation Rate Survey Information for Bellevue College

(status of Fall 2003 cohort)

Combined transfer out/ completion/graduation (within 150% normal time):53.9%

GRS completion or graduation rate (within 150% normal time): 26.0%

GRS transfer-out rate (non-completers only within 150% normal time):27.9%

Transfer out rate (completers and non-completers):45.7%

GRS completion or graduation rate (within 200% normal time):31.8%

Students still enrolled after four years:15.0%

**BC provides this information pursuant to the federal Student-Right-to-Know Act, so that prospective students can make informed decision about colleges they might wish to attend. The federal Graduation Rate Survey definitions pertain to a very small group of BC students: new students, attending full time, with degree or certificate intentions.

HOW TO READ COURSE INFORMATION

Common Course Identifier	Course Number	Course Title	Credit Hours
Department Abbreviation	ENGL& 101	English Composition I	• 5 CR
Prerequisites, fees and other course information.	<i>Prerequisite:</i> Placement by assessment or ENGL 092 or 093 with a C- or better. <i>Fee:</i> \$22 lab.		
Item #	1001 A	Meyer M	daily 7:30a-8:20a R201
	1003 B	Hansen M	TTh 5:30p-7:40p R205
	1002	HVC staff	MW 7:30a-8:20a R211
Section	Flexible Option	Instructor	Days Time
			Room #
			Shaded Bar indicates Evening or Weekend Class



Common Course Identifier: recognized among Washington State Community and Technical Colleges



Online Courses: via the internet – see Distance Ed/eLearning, p. 22-23.



Hybrid Courses: on campus & online instruction, see p. 24.

Accounting

IBIT (INSTITUTE FOR BUSINESS & INFORMATION TECHNOLOGY)

This is a professional/technical program.

ACCT 101 Practical Accounting I • 5 CR

Not recommended for students transferring to 4-year colleges. *Recommended:* BUS 145.

4002 HVA Nash-Haruna A MW 8:00a-10:20a R202

Section HVA is a hybrid class. On campus sessions meet on the days listed. The balance of instruction occurs online as directed by the course syllabus.

4004 B Nash-Haruna A MTWTh 10:30a-12:20p R202
Section B is recommended for English language learners and non-native speakers or students needing slower paced instruction.

ACCT 102 Practical Accounting II • 5 CR

Prerequisite: ACCT 101 with a C- or better, or entry code.

4006 A Nash-Haruna A MTWTh 1:30p-3:20p R202

ACCT 135 Business Payroll Tax Accounting • 3 CR

Prerequisite: ACCT 101 or permission of instructor.

4008 OAS Hall R online A254

ACCT 272 QuickBooks Certification • 2 CR

Prerequisite: ACCT 172 with a C or better, or entry code; class uses QuickBooks Premier 2013. *Fee:* \$57.50 computer use.

4014 HVA Hall R T 12:30p-2:40p A132
Section HVA is a hybrid class. On campus sessions meet on the day listed. The balance of instruction occurs online as directed by the course syllabus.

Accounting-Transfer

SOCIAL SCIENCE DIVISION

ACCT& 201 Principles of Accounting I • 5 CR

Prerequisite: ENGL& 101 with C or better. *Prerequisite:* MATH 138 or higher with C or better.

5480 A staff MTWTh 9:30a-11:20a B251

5481 B staff MW 6:00p-9:45p C208

5482 OAS Paquette J online D110

Section OAS requires proctored exams (scheduled Friday night or Saturday) and additional online homework manager program; (fees may apply, save your Bellevue College bookstore receipt for proof of purchase). Exams must be taken at the Bellevue College main campus during scheduled exam sessions (no fees apply), or you can arrange to take the exam at an eligible testing center if approved by the course instructor (fees may apply). Contact the course instructor or review the course syllabus for additional information.

ACCT& 202 Principles of Accounting II • 5 CR

Prerequisite: ACCT& 201 with a C or better, or entry code

5491 A Staff MTWTh 11:30a-1:20p C208

5492 B Wong J TTh 6:00p-9:45p C208

5493 OAS Paquette J online D110

Section OAS requires proctored exams (scheduled Friday night or Saturday) and additional online homework manager program; (fees may apply, save your Bellevue College bookstore receipt for proof of purchase). Exams must be taken at the Bellevue College main campus during scheduled exam sessions (no fees apply), or you can arrange to take the exam at an eligible testing center if approved by the course instructor (fees may apply). Contact the course instructor or review the course syllabus for additional information.

ACCT& 203 Principles of Accounting III • 5 CR

Prerequisite: ACCT& 202 with a C or better, or entry code

5498 A Segal A MTWTh 9:30a-11:20a C208

5499 OAS Wong J online D110

Section OAS requires proctored exams (scheduled Friday night or Saturday) and additional online homework manager program; (fees may apply, save your Bellevue College bookstore receipt for proof of purchase). Exams must be taken at the Bellevue College main campus during scheduled exam sessions (no fees apply), or you can arrange to take the exam at an eligible testing center if approved by the course instructor (fees may apply). Contact the course instructor or review the course syllabus for additional information.

Adult Basic Education

ARTS & HUMANITIES DIVISION

See Developmental Education, page 13.

Alcohol & Drug Counseling

HEALTH SCIENCES, EDUCATION & WELLNESS INSTITUTE

This program is self-supporting and is not eligible for general tuition waivers. For information regarding our refund policy, please refer to our program brochure or contact the Health Sciences, Education & Wellness Institute office at (425)564-2012.

HSSA& 101 Introduction to Addictive Drugs • 3 CR

Fee: \$293.10.

6545 A Dodd D MW 6:30p-9:20p R210

Class meets: 7/2 - 8/6.

ALDAC 105 Chemical Dependency: Client & Family Education • 3 CR

Prerequisite: HSSA& 101 & permission of instructor. *Fee:* \$293.10.

6547 A Palmer L TTh 6:30p-9:20p R210

Class meets 7/8 - 8/12.

ALDAC 204 Chemical Dependency: Adolescent Assessment & Treatment • 2 CR

Prerequisite: ALDAC 102 or HSSA 102 and HSSA& 101 (previously ALDAC 101) or permission of program director. *Fee:* \$195.40.

6549 LSA Rombouts/Iannicello Sa 9:30a-4:00p R210

Section LSA is a late start class that meets 7/12 - 7/26 in R210 and 8/2 in room TBA from 9:30a-4:00p.

ALDAC 206 Chemical Dependency: Group Counseling • 3 CR

Prerequisite: ALDAC 106 or HSSA 106 or permission of program director. *Fee:* \$293.10.

6551 A Kirkpatrick A MW 6:30p-9:20p R103A

Class meets 7/2 - 8/6.

ALDAC 225 Chemical Dependency: Ethics & Laws • 3 CR

Prerequisite: ALDAC 106, 108 and permission of program director. *Fee:* \$293.10.

6553 A Weatherly P MW 6:30p-9:20p R208

Class meets 7/2 - 8/6.

ALDAC ONLINE LEARNING

The following courses are available for students through the CANVAS course site <http://bellevuecollege.edu/canvas/>. Distance Education fees are included in the listed cost of the course. Please contact our office at (425) 564-2012 to speak with the program director or review the program website at www.bellevuecollege.edu/health/aldac for more information

HSSA& 101 Introduction to Addictive Drugs • 3 CR

Fee: \$405.60

6560 WBL Blackburn G online R130B

Class meets: 7/1 - 8/11.

ALDAC 102 Chemical Dependency: Pharmacology of Alcohol and Other Drugs • 3 CR

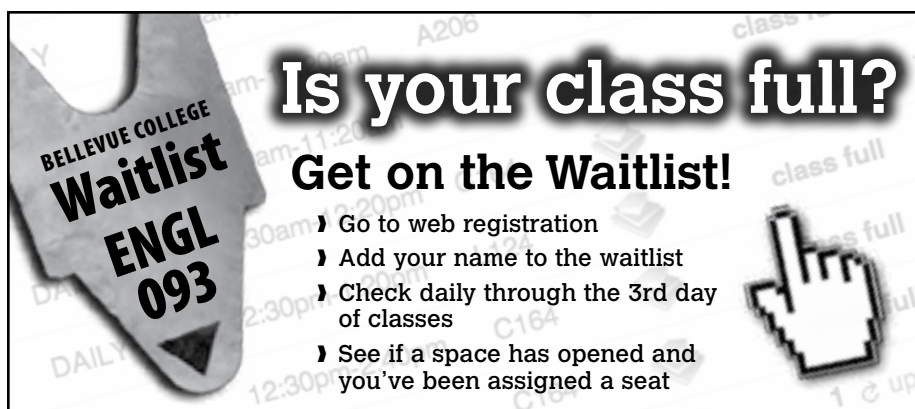
Fee: \$405.60

6562 WBL Blackburn G online R130B

Class meets 7/1 - 8/11.



**Last Day
for Bookstore
100% Refunds:
July 7th**



Is your class full?

Get on the Waitlist!

- Go to web registration
- Add your name to the waitlist
- Check daily through the 3rd day of classes
- See if a space has opened and you've been assigned a seat

ALDAC 103 Introduction to Counseling and the Helping Professions • 3 CR

Fee: \$405.60

6564 WBL Blackburn G online R130B
Class meets 7/1 - 8/11.

WORKSHOPS/SEMINARS: ALDAC RECERTIFICATION CLASSES-NON-CREDIT

Students wanting to complete this workshop for credit must meet with the program director. Students may register through the ALDAC office in R130. If only registering for workshops, students do not need to apply to Bellevue College.
*CH=Clock hours

ALDAC 094 ADIS Instructor Training • 16CH

Fee: \$137.32.

K499 A Frederick P FSa 9:00a-5:00p R210
Class meets 8/8 - 8/9.

Allied Health

HEALTH SCIENCES, EDUCATION & WELLNESS INSTITUTE

Allied Health (AH) offers an Associate Degree in Allied Health and several short-term certificates in the healthcare field. For more information about our programs, classes, and any prerequisites, visit www.bellevuecollege.edu/ahel.

American Sign Language

ARTS & HUMANITIES DIVISION

See World Languages, page 21.

Anthropology

SOCIAL SCIENCE DIVISION

ANTH& 100 Survey of Anthropology • 5 CR

5055 HYA Dixon C MW 9:30a-11:20a D101
Section HYA is a hybrid class. On campus sessions meet on the days listed. The balance of instruction occurs online as directed by the course syllabus.

5056 OAS Gonlin N online D110
5157 OBS Gonlin N online D110

ANTH 180 American Life & Culture • 5 CR

Same as CES 180. Either ANTH 180 or CES 180 may be taken for credit, not both.

5061 OAS Dixon C online D110

ANTH& 204 Archaeology • 5 CR

5065 OAS Gonlin N online D110

ANTH& 205 Biological Anthropology • 5 CR

Same as ANTH& 215. Either ANTH& 205 or ANTH& 215 may be taken for credit, not both. Fulfills a natural science course requirement at BC.

5071 OAS Tessandori A online D110

ANTH& 206 Cultural Anthropology • 5 CR

5073 OAS Tessandori A online D110

ANTH 208 Language, Culture and Society • 5 CR

Fulfills humanities course requirement at BC.

5066 OAS Hunt K online D110

Art

ARTS & HUMANITIES DIVISION

ART 110 Two-Dimensional Design • 5 CR

Requires additional lab time outside class.

0705 A Sandblom V MTW 9:30a-12:20p C161

ART 111 Design Color • 5 CR

Prerequisite: ART 110. Requires additional lab time outside class.

0708 A Decaro P MTW 9:30a-12:20p C154

ART 112 Three-Dimensional Design • 5 CR

Recommended: ART 110 and 111. Requires additional lab time outside class. Fee: \$60 woodshop supplies

0711 A Brown R MW 9:30a-2:15p C162

ART 120 Drawing I • 5 CR

Requires additional lab time outside class.

0714 A Decaro P MTW 1:30p-4:20p C256

ART 121 Drawing II • 5 CR

Prerequisite: ART 120 requires additional time outside class. Fee: \$35.

0717 A Thomas L MW 8:30a-1:15p C256

ART 150 Basic Photo I • 5 CR

Requires two hours of lab work per week. Photo lab open daily from 9:30am to 3:00pm. Bring your camera on the first day of class. Fee: \$45 photo lab supplies.

0720 A Banks G MTW 8:30a-11:20a C251

ART 153 Darkroom Laboratory Techniques • 1 CR

Prerequisite: ART 150. May be repeated for a maximum of 3 credits. Photo lab open daily from 9:30am to 3:00pm. Fee: \$45 photo lab supplies.

0723 A White C arranged C253

ART 154 Introduction to Digital Photography • 5 CR

Recommended: Basic computer skills. Fee: \$45 photo lab supplies.

0726 A Arslain C MTW 8:30a-11:20a N202

ART 221 Advanced Studio Drawing I • 5 CR

Prerequisite: ART 111, 121, and permission of instructor requires additional time outside class. Fee: \$35.

0732 A Thomas L MW 8:30a-1:15p C256

ART 222 Advanced Studio Drawing II • 5 CR

Prerequisite: ART 221 and permission of instructor Requires additional time outside class. Fee: \$35.

0733 A Thomas L MW 8:30a-1:15p C256

ART 245 Watercolor I • 5 CR

Recommended: ART 120. Fee: \$25 for supplies.

0736 A Sandblom V MTW 1:30p-4:20p C154

ART 247 Watercolor II • 5 CR

Prerequisite: ART 230. Recommended: ART 110, 120, or 111. Fee: \$25 for supplies.

0737 A Sandblom V MTW 1:30p-4:20p C154

ART 260 Basic Ceramics I • 5 CR

Additional lab time outside of class time required during open lab hours. Fee: \$60 ceramic lab supplies.

0740 A Husby L MTW 9:00a-11:50a C157

0741 B Husby L MTW 12:00p-2:50p C157

ART 261 Basic Ceramics II • 5 CR

Prerequisite: ART 260. Requires additional lab time outside class during open lab hours. Fee: \$60 ceramic lab supplies.

0744 A Husby L MTW 9:00a-11:50a C157

0745 B Husby L MTW 12:00p-2:50p C157

ART 294 Special Topics in Art: Alternative Processes in Photography • 5 CR

May be repeated for a maximum of 15 credits. Fee: \$45 photo lab supplies.

0748 A White C MTW 11:30a-2:20p C251

Astronomy

SCIENCE DIVISION

ASTR& 101 Introduction to Astronomy • 6 CR

Either ASTR& 101 or ASTR& 100, may be taken for credit, not both.

3002 OAS Goss A online L200

3004 OBS Goss A online L200

3006 OCS Goss A online L200

3008 ODS Goss A online L200

3010 OES Lau E online L200

Biology

SCIENCE DIVISION

BIOL& 100 Survey of Biology • 6 CR

Fulfills BC laboratory science course requirement. Fee: \$41 science lab.

3060 A staff MTWTh 8:30a-11:00a S212

3062 B staff MTWTh 11:30a-2:00p S212

3066 OAS Steinert K online L200

3068 OBS Steinert K online L200

Sections OAS and OBS meet 7/1-8/29 (9 weeks) and require proctored exams. Please visit www.bellevuecollege.edu/distance/ or call (425) 564-2438.

BIOL 108 Human Biology • 6 CR

Prerequisite: High School Biology recommended. Fulfills laboratory science course requirement at BC. No science lab fee charged for online sections. Required lab kit for online sections available for purchase at the BC Bookstore.

3080 OAS Gold M online L200

3082 OBS Gold M online L200

BIOL& 160 General Biology w/Lab • 6 CR

Fulfills laboratory science course requirement at BC. Strongly **Recommended:** BASCI 098, CHEM 100 or CHEM& 121, or one year of high-school chemistry. **Fee:** \$41 science lab.

3102 A	staff	MTWTh	7:30a-10:00a	S216
3104	HYB staff	MW	8:30a-10:20a	S214
3106	HYC staff	TTh	8:30a-10:20a	S214

Sections HYB and HYC are a hybrid class. On campus sessions meet on the days listed. The balance of instruction occurs online as directed by the course syllabus. Significant computer use.

3108 D	staff	MTWTh	10:30a-1:00p	S216
3110 E	staff	MTWTh	11:30a-2:00p	S214
3112 F	staff	MTWTh	12:30p-3:00p	S219
3114 G	staff	MWTh	5:30p-9:00p	S214

BIOL& 211 Biology Majors Cellular or Animal or Plant • 6 CR

Fulfills laboratory course requirement at BC. **Prerequisite:** BIOL& 160 and CHEM&161 with a C (2.0) or better or entry code. **Fee:** \$41 science lab.

3134 A	Fuller J	MTWTh	12:30p-3:00p	S217
--------	----------	-------	--------------	------

BIOL& 212 Biology Majors Animal or Cellular or Plant • 6 CR

Fulfills laboratory course requirement at BC. **Prerequisite:** BIOL& 211. **Fee:** \$41 science lab.

3144 A	Cornish T	MTWTh	3:15p-5:45p	S219
--------	-----------	-------	-------------	------

BIOL& 213 Biology Majors Plant or Cellular or Animal • 6 CR

Fulfills laboratory course requirement at BC. **Prerequisite:** BIOL& 211. **Fee:** \$41 science lab.

3154 A	Fuller J	MTWTh	9:00a-11:30a	B138
--------	----------	-------	--------------	------

BIOL& 241 Human Anatomy & Physiology I • 6 CR

Fulfills laboratory course requirement at BC. **Prerequisite:** BIOL& 160 or BIOL& 211 with a C or better, or entry code. **Fee:** \$41 science lab.

3166 A	staff	MTWTh	8:30a-11:00a	S220
3168 B	staff	MTWTh	11:30a-2:00p	S220
3170 C	staff	MTWTh	2:30p-5:00p	S220
3172 D	staff	TWTh	5:30p-9:00p	S220

BIOL& 242 Human Anatomy & Physiology II • 6 CR

Fulfills laboratory course requirement at BC. **Prerequisite:** BIOL& 241 at BC with a C or better, or entry code. **Fee:** \$41 science lab.

3186 A	staff	MTWTh	8:30a-11:00a	S221
3188 B	staff	MTWTh	11:30a-2:00p	S221
3190 C	staff	MTWTh	2:30p-5:00p	S221

BIOL& 260 Microbiology • 6 CR

Fulfills laboratory course requirement at BC. **Prerequisite:** BIOL& 160 or BIOL& 211 with a C or better or entry code. **Fee:** \$41 science lab.

3210 B	staff	MTWTh	9:30a-12:00p	S320
3212 C	staff	MTWTh	12:30p-3:00p	S322

If you are unable to attend the labs held during the first week of the quarter, you will receive an "F" grade for the course.

Botany**SCIENCE DIVISION****BOTAN 110 Introductory Plant Biology • 6 CR**

Fulfills laboratory science course requirement at BC. **Fee:** \$41 science lab.

3234 A	Cornish T	MTWTh	12:00p-2:30p	B138
--------	-----------	-------	--------------	------

Business Administration – Transfer**SOCIAL SCIENCE DIVISION****BA 240 Statistical Analysis • 5 CR**

Prerequisite: MATH 138 or MATH& 141 with a C or better, or entry code.

5506 HYA Li W MW 1:30p-4:00p C208
Section HYA is a hybrid class. On campus sessions meet on the days listed. The balance of instruction occurs online as directed by the course syllabus.

5507 B	Yamasaki D	TTh	6:00p-9:45p	C165
--------	------------	-----	-------------	------

5508 OAS	Li W	online		D110
----------	------	--------	--	------

Section OAS requires proctored exams. Exams must be taken at the Bellevue College main campus during scheduled exam sessions (no fees apply), or you can take the exam at an eligible testing center if approved by the course instructor (fees may apply). Contact the course instructor or review the course syllabus for additional information.

BUS& 201 Business Law • 5 CR

5513 A	staff	MTWTh	9:30a-11:20a	C165
--------	-------	-------	--------------	------

5514 B	staff	MW	6:00p-9:45p	C165
--------	-------	----	-------------	------

5515 OAS	Brown M	online		D110
----------	---------	--------	--	------

Section OAS requires proctored exams. Exams must be taken at the Bellevue College main campus during scheduled exam sessions (no fees apply), or you can take the exam at an eligible testing center if approved by the course instructor (fees may apply). Contact the course instructor or review the course syllabus for additional information.

Business Intelligence**IBIT (INSTITUTE FOR BUSINESS & INFORMATION TECHNOLOGY)**

This is a professional/technical program.

BUSIT 103 SQL Fundamentals • 5 CR

Recommended: Familiarity with spreadsheets or databases.

4620 OAS	staff	online		A254
----------	-------	--------	--	------

Class ends 8/22.

Business Management**IBIT (INSTITUTE FOR BUSINESS & INFORMATION TECHNOLOGY)**

This is a professional/technical program.

BUS& 101 Introduction to Business • 5 CR

Fulfills social science course requirement at BC.

4351 A	staff	MTWTh	9:30a-11:20a	R203
--------	-------	-------	--------------	------

4353 OAS	Woo J	online		A254
----------	-------	--------	--	------

4355 OBS	staff	online		A254
----------	-------	--------	--	------

BUS 120 Organizational Behavior • 5 CR

4357 HYA staff W 6:00p-9:45p R204
Section HYA is a hybrid class. On campus sessions meet on the day listed. The balance of instruction occurs online as directed by the course syllabus.

4359 OAS	staff	online		A254
----------	-------	--------	--	------

BUS 145 Business Mathematics • 5 CR

Prerequisite: BTS 161 or BTS 165 at BC with a C- or better or equivalent spreadsheet experience. Calculator recommended

4361 A	staff	MTWTh	1:30p-3:20p	R203
--------	-------	-------	-------------	------

4363 OAS	staff	online		A254
----------	-------	--------	--	------

Business Sustainable Practices**IBIT (INSTITUTE FOR BUSINESS & INFORMATION TECHNOLOGY)**

This is a professional/technical program.

BSUST 110 Communication for Sustainable Business Practices • 4 CR

4021 OAS	staff	online		A254
----------	-------	--------	--	------

BSUST 160 Sustainable Business Analysis • 5 CR

Recommended: BSUST 150.

4023 OAS	staff	online		A254
----------	-------	--------	--	------

Business Technology Systems**IBIT (INSTITUTE FOR BUSINESS & INFORMATION TECHNOLOGY)**

This is a professional/technical program.

BTS 101 Keyboarding I • 1 CR

Course is graded pass/fail.

4102 OAS	Walker L	online		A254
----------	----------	--------	--	------

BTS 104 Keyboarding Review & Speed Building • 1 CR

Course is graded pass/fail. **Recommended:** BTS 101 or equivalent experience.

4104 OAS	Walker L	online		A254
----------	----------	--------	--	------

BTS 109 Business Communications • 5 CR

Prerequisite: BTS 161 or equivalent experience and ENGL 092 or 093. Keyboarding skill recommended.

4105 OAS	Corcoran	online		A254
----------	----------	--------	--	------

BTS 144 Personal Information Manager • 3 CR

Recommended: BTS 161 or equivalent experience.

4106 OAS	Walker L	online		A254
----------	----------	--------	--	------

4108 OBS	Walker L	online		A254
----------	----------	--------	--	------

BTS 145 Introduction to Web Technology • 1 CR

Prerequisite: Previous computer experience or permission of instructor.

4110 OAS	Wacker Z	online		A254
----------	----------	--------	--	------

BTS 147 Presentation Design & Delivery • 3 CR

Recommended: BTS 110 or 161.

4112 OAS	Walker L	online		A254
----------	----------	--------	--	------

BTS 161 Business Software Essentials • 5 CR

Recommended: BTS 101 or 104 or equivalent keyboarding experience. **Fee:** \$57.50 computer use.

4114 HYA	Rowley K	TTh	8:30a-11:20a	A132
----------	----------	-----	--------------	------

Section HYA is a hybrid class. On campus sessions meet on the days listed. The balance of instruction occurs online as directed by the course syllabus.

4116 OAS	Marks S	online		A254
----------	---------	--------	--	------

4118 OBS	Marks S	online		A254
----------	---------	--------	--	------

BTS 165 Business Spreadsheet Analysis & Design • 5 CR

Recommended: BTS 161 or equivalent experience. **Fee:** \$57.50 computer use.

4120 HYA	Rowley K	MW	8:30a-11:20a	A132
----------	----------	----	--------------	------

Section HYA is a hybrid class. On campus sessions meet on the days listed. The balance of instruction occurs online as directed by the course syllabus.

4122 OAS	Marks S	online		A254
----------	---------	--------	--	------

4124 OBS	Marks S	online		A254
----------	---------	--------	--	------

4126 OCS	Wacker Z	online		A254
----------	----------	--------	--	------

BTS 168 Business Data Management Tools • 5 CR*Recommended:* BTS 161 or equivalent experience.4128 OAS Laney D  online A254**BTS 210 Collaborative Online Workspace • 5 CR***Recommended:* BTS 110 or 161.4130 OAS Corcoran M  online A254**BTS 265 Advanced Business Spreadsheet Analysis & Design • 5 CR***Prerequisite:* BTS 165.4132 OAS Wacker Z  online A254**BTS 280 Project Planning Tracking and Reporting • 5 CR***Recommended:* BTS 161 or equivalent experience.4134 OAS Harris L  online A254**Chemistry****SCIENCE DIVISION****CHEM 100 Chemical Explorations • 5 CR**

Either CHEM 100 or CHEM& 110 may be taken for credit, not both.

3252 A Christopherson F MTWTh 1:30p-3:20p S310

CHEM& 110 Chemical Concepts w/ Lab • 6 CR

Either CHEM& 110 or CHEM 100 may be taken for credit, not both.

3254 OAS Shelley C  online L2003256 OBS Deodhar S  online L200**CHEM& 121 Introduction to Chemistry • 6 CR***Prerequisite:* MATH 098 with a C or better, or placement into MATH 099 or higher. This course assumes no previous chemistry knowledge. Students who plan to take CHEM& 161 should take CHEM& 140 instead of CHEM& 121 if possible. Students who've had chemistry in high school should consider taking the CHEM& 161 placement exam. For placement exam information, go to www.bellevuecollege.edu/enrollment/assessment/chemistry/. *Fee:* \$41 science lab.

3260 A Glover R MTWTh 7:30a-8:55a S310

also meets MW 9:00a-11:10a S312

3262 B Glover R MTWTh 7:30a-8:55a S310

also meets TTh 9:00a-11:10a S312

3264 C staff MTWTh 9:30a-10:55a S310

also meets MW 11:15a-1:25p S312

3266 D staff MTWTh 9:30a-10:55a S310

also meets TTh 11:15a-1:25p S312

3268 E staff MTWTh 11:30a-12:55p S310

also meets MW 1:30p-3:40p S312

3270 F staff MTWTh 11:30a-12:55p S310

also meets TTh 1:30p-3:40p S312

3272 G staff MW 5:30p-9:00p S310

also meets T 5:30p-9:00p S312

3274 H staff MW 5:30p-9:00p S310

also meets Th 5:30p-9:00p S312

CHEM& 131 Introduction to Organic/Biochemistry • 6 CR*Prerequisite:* CHEM& 121 or permission of instructor. *Fee:* \$41 science lab.

3278 A staff TTh 5:30p-9:00p S310

also meets M 5:30p-9:00p S314

3280 B staff TTh 5:30p-9:00p S310

also meets W 5:30p-9:00p S314

CHEM& 140 General Chemistry Prep w/Lab • 6 CR*Prerequisite:* MATH 099 with a C or better, or placement into MATH& 141. This course assumes no previous chemistry knowledge. Students who've had chemistry in high school should consider taking the CHEM& 161 placement exam. For placement exam information, go to www.bellevuecollege.edu/enrollment/assessment/chemistry/. *Fee:* \$41 science lab.

3286 A staff MTWTh 7:30a-8:55a S323

also meets MW 9:00a-11:10a S319

3288 B staff MWTh 3:30p-5:20p S323

also meets MW 5:30p-7:40p S319

CHEM& 161 General Chemistry I • 6 CR*Prerequisite:* Completion or concurrent enrollment in MATH& 141 or higher, or placement into MATH& 142 or higher. 2) Also, CHEM& 121 or 140 with a C or better (or equivalent), or by chemistry placement exam. For placement exam information, go to www.bellevuecollege.edu/enrollment/assessment/chemistry/. *Fee:* \$41 science lab.

3292 A Doucette S daily 11:00a-1:15p S323

also meets TWThF 8:30a-10:40a S317

Section A meets 7/1-7/24 (17 days).

3294 B Doucette S daily 11:00a-1:15p S323

also meets MTWTh 1:30p-3:40p S317

Section B meets 7/1-7/24 (17 days).

3296 C staff MTWTh 1:30p-2:55p S323

also meets MW 3:00p-5:10p S319

CHEM& 162 General Chemistry II • 6 CR*Prerequisite:* CHEM& 161 with a C or better. *Fee:* \$41 science lab.

3302 A Surandranath J daily 11:00a-1:15p S323

also meets TWThF 8:30a-10:40a S317

Section A meets 7/28-8/19 (17 days).

3304 B Surandranath J daily 11:00a-1:15p S323

also meets MTWTh 1:30p-3:40p S317

Section B meets 7/28-8/19 (17 days).

3306 C staff MTWTh 9:30a-10:55a S323

also meets MW 11:00a-1:10p S317

3308 D staff TTh 5:30p-9:00p S323

also meets M 5:30p-9:00p S317

CHEM& 163 General Chemistry III • 6 CR*Prerequisite:* CHEM& 162 with a C or better. *Fee:* \$41 science lab.

3314 A staff MTWTh 9:30a-10:55a S324

also meets MW 11:00a-1:10p S316

3316 B staff TTh 5:30p-9:00p S324

also meets M 5:30p-9:00p S316

CHEM& 261 Organic Chemistry I • 6 CRCheck website at <http://scidiv.bellevuecollege.edu/chemistry/summer-intensive-chem/> for more information before enrolling into sections A or B. *Prerequisite:* CHEM& 161, 162 and 163. *Fee:* \$41 science lab.

3322 A Mayer J daily 10:45a-2:15p S324

also meets TWThF 7:45a-10:30a S314

Section A is a three-week accelerated course that meets 7/1-7/18 (13 days).

3324 B Mayer J daily 10:45a-2:15p S324

also meets MTWTh 2:30p-5:15p S314

Section B is a three-week accelerated course that meets 7/1-7/18 (13 days).

3326 C staff MW 5:30p-9:00p S323

also meets T 5:30p-9:00p S314

CHEM& 262 Organic Chemistry II • 6 CRCheck website at <http://scidiv.bellevuecollege.edu/chemistry/summer-intensive-chem/> for more information before enrolling into sections A or B. *Prerequisite:* CHEM& 261. *Fee:* \$41 science lab.

3332 A Mitchell D daily 10:45a-2:15p S324

also meets TWThF 7:45a-10:30a S314

Section A meets 7/21-8/6 (13 days).

3334 B Mitchell D daily 10:45a-2:15p S324

also meets MTWTh 2:30p-5:15p S314

Section B meets 7/21-8/6 (13 days).

CHEM& 263 Organic Chemistry III • 6 CRCheck website at <http://scidiv.bellevuecollege.edu/chemistry/summer-intensive-chem/> for more information before enrolling into sections A or B. *Prerequisite:* CHEM& 262. *Fee:* \$41 science lab.

3340 A Mitchell D daily 10:45a-2:15p S324

also meets TWThF 7:45a-10:30a S314

Section A is a three-week accelerated course that meets 8/7-8/25 (13 days).

3342 B Mitchell D daily 10:45a-2:15p S324

also meets MTWTh 2:30p-5:15p S314

Section B is a three-week accelerated course that meets 8/7-8/25 (13 days).

3344 C staff MW 5:30p-9:00p S324

also meets Th 5:30p-9:00p S314

Chinese**ARTS & HUMANITIES DIVISION**

See World Languages, page 21.


Communication Studies**ARTS & HUMANITIES DIVISION****CMST& 101 Introduction to Communication • 5 CR**

0805 A Deheck R MTWTh 9:30a-11:20a C168

CMST& 102 Introduction to Mass Media • 5 CR

Fulfills a Social Science course requirement at BC.

0810 A Anspach W MTWTh 9:30a-11:20a R211

0811 OAS Oleson K  online R2300812 OBS Korolenko M  online R230**CMST 132 Techniques & Technology of Propaganda • 5 CR**0816 OAS Korolenko M  online R230**CMST 202 Survey of Speech Communication • 5 CR**0820 OAS Oleson K  online R230**CMST& 210 Interpersonal Communication • 5 CR**

0824 A Liu L MTWTh 11:30a-1:20p C168

0825 OAS Nudelman L  online R2300826 OBS Nudelman L  online R2300827 OCS Liu L  online R230**CMST 216 Scripting for Film Video & Multimedia • 5 CR***Prerequisite:* CMST 141 or ENGL& 101 or ENGL& 235 or ENGL 271 or ENGL 272 or equivalent course with a C- or better, or entry code.0830 OAS Korolenko M  online R230**CMST& 220 Public Speaking • 5 CR**

0834 A Pope D MTWTh 1:30p-3:20p R201

0835 B Sitko H MWTh 6:00p-8:45p R211

CMST& 230 Small Group Communication • 5 CR

Fulfills social science course requirement at BC.

0840 A Yabui A MTWTh 11:30a-1:20p R211

0841 B Yabui A MTWTh 1:30p-3:20p R211

0842 OAS Anderson J  online R230**CMST 250 Organizational Communication • 5 CR***Recommended:* ENGL& 101 placement or higher.0845 OAS Nudelman L  online R230**CMST 280 Intercultural Communication • 5 CR**

0850 A Yabui A MTWTh 7:30a-9:20a R201

0851 B Yabui A MTWTh 9:30a-11:20a R201

0852 OAS Hurst S  online R2300853 OBS Hurst S  online R2300854 OCS Hurst S  online R230

Computer Science – Transfer**SCIENCE DIVISION****CS 101 Technology & Computer Science • 5 CR***Prerequisite:* MATH 098 or higher.3451 OAS Lovestadt A  online L200**CS 210 Fundamentals of Computer Science I • 5 CR***Prerequisite:* MATH& 141 or above with a C- or better, or entry code.3455 OAS Iverson B  online L200**CS 211 Fundamentals of Computer Science II • 5 CR***Prerequisite:* CS 210 or entry code3461 OAS Niiyama C  online L200**CS 250 Management Information Systems • 5 CR***Enforced Prerequisite:* CS 101 or entry code. Requires experience with computer databases.3471 OAS Li W  online L200Section OAS requires proctored exams. For questions, please visit www.bellevuecollege.edu/distance/.**Criminal Justice****SOCIAL SCIENCE DIVISION****CJ& 101 Introduction to Criminal Justice • 5 CR**

5000 A Curtis S MTWTh 9:30a-11:20a D103

5001 OAS Freyberg C  online D110**CJ& 112 Introduction to Criminology • 5 CR**5018 OAS Freyberg C  online D110**Cultural & Ethnic Studies****SOCIAL SCIENCE DIVISION****CES 100 Race in the United States • 5 CR***Prerequisite:* Placement by assessment into ENGL& 101 or ENGL 092 or ENGL 093 with a C- or better. May be used as social science or humanities course requirement, not both, at BC.


5600 A Irey S MTWTh 9:30a-11:20a R101

5601 OAS Pollock K  online D110**CES 102 Introduction to American Culture • 2 CR**5604 OAS Sutler-Cohen S  online D110**CES 109 Introduction to Women's Studies • 5 CR***Recommended:* Placement by assessment into ENGL& 101.

5610 A Pollock K MTWTh 8:30a-10:20a A206

CES 180 American Life & Culture • 5 CR

Same as ANTH 180. Either CES 180 or ANTH 180 may be taken for credit, not both.

5639 OAS Dixon C  online D110**CES 201 Sports and Culture • 5 CR***Prerequisite:* Placement by assessment into ENGL& 101 or ENGL 092 or ENGL 093 with a C- or better.5618 OAS Goldsmith J  online D110**Dance****ARTS & HUMANITIES DIVISION**

See Theatre Arts, page 21.

Database Administration**IBIT (INSTITUTE FOR BUSINESS & INFORMATION TECHNOLOGY)**

This is a professional/technical program.

DBA 130 Database Theory • 5 CR*Prerequisite:* BUSIT 103 with a C or better. Placement by assessment into ENGL& 101, or completion of ENGL 092 or 093 with a C or better.4630 OAS Harris L  online A254**Developmental Education****ARTS AND HUMANITIES DIVISION****ADULT BASIC EDUCATION (ABE)**

The Adult Basic Education program offers day and evening courses in English and math to adults with fluent English speaking abilities. The English and math courses begin at elementary levels and provide rigorous academic instruction for GED preparation, college preparation, and employment. Completion of a one-week Orientation Class is required to determine appropriate placement into the program. Substantial and sustained progress is required for continued enrollment. There is a \$25 fee per student each quarter. There is a fee waiver available for those who qualify. Come to R230 or call (425) 564-2067 for more information.

ABE ENGLISH**ABE 063 Level 3**

7638 A staff TWTh 9:30a-11:20a A130

7640 C staff MW 5:30p-8:40p R106A

ABE 064 Level 4

7648 A staff TWTh 9:30a-11:20a A130

7650 C staff MW 5:30p-8:40p R106A

ABE MATH**ABE 063 Level 3**

7639 B staff TWTh 11:30a-1:20p R203

7641 D staff TTh 5:30p-8:40p R106A

ABE 064 Level 4

7649 B staff TWTh 11:30a-1:20p R303

7651 D staff TTh 5:30p-8:40p R106C

ENGLISH AS A SECOND LANGUAGE

The English as a Second Language classes are designed for immigrants, refugees, permanent residents, and U.S. citizens. People on student or tourist visas are not eligible and should contact International Student Programs at (425) 564-3185.

JOB PREPAREDNESS*Prerequisite:* Must be eligible to work in the U.S. and a city of Bellevue resident. Call (425) 564-2723 for more information or come in to R230.**DEVED 020 Job Preparedness: Preparing for Work (ESL level 5/6)**

For high intermediate/advanced level English speakers. Students learn how to write a resume, complete applications, interview for jobs and network to find employment in the U.S.

7263 A staff TTh 5:30p-8:40p R202

DEVED 020 Job Preparedness: Working in English (ESL level 4)

For intermediate level students who want to communicate professionally at work. Intensive practice in speaking, listening, reading and writing as students learn to communicate at work.

7264 B staff TTh 5:30p-8:40p R302

DEVED 020 Job Preparedness: On the Job Communications (ESL level 6)

For advanced level English speakers. Students learn about formal and informal communications, effective e-mails and letters, meetings, telephone techniques and presentations.

7265 C staff TTh 5:30p-8:40p R101

GENERAL EDUCATION DEVELOPMENT (GED)

The GED program offers GED Test Preparation courses to adults who are planning to take the GED exams. Students may also enroll in ABE courses to build their English or math skills. Completion of a one-week Orientation Class is required to determine appropriate placement into the program. Substantial and sustained progress is required for continued enrollment. There is a \$25 fee per student each quarter. There is a fee waiver available for those who qualify. Come to R230 or call (425) 564-2067 for more information.

GED 071 GED Preparation

7670 A staff TWTh 8:30a-10:50a R109

7672 C staff TWTh 9:30a-11:20a N204

7673 D staff TWTh 11:30a-1:20p R109

7671 B staff MW 5:30p-8:50p R109

7674 E staff TTh 5:30p-8:50p R109

GED 072 GED Preparation

7680 A staff TWTh 8:30a-10:50a R109

7681 B staff MW 5:30p-8:50p R109

Diagnostic Ultrasound**HEALTH SCIENCES, EDUCATION & WELLNESS INSTITUTE****DUTEC 102 Practical Aspects of Sonography • 3 CR***Prerequisite:* Acceptance into the program. *Fee:* \$20.50 lab

2050 A Schwartz M arranged B252

DUTEC 113 Pathophysiology IV • 3 CR*Prerequisite:* DUTEC 105, 106, and 112, and acceptance into program or permission of program chair.

2054 A Peck A arranged B252

DUTEC 165 Ultrasound Equipment III • 3 CR*Prerequisite:* Acceptance into the program or permission of program chair. *Fee:* \$20.50 lab and \$109 equipment.

2058 A Grant R arranged A250

2062 B Peterson L arranged A250

2063 C Hatcher T arranged A250

2064 D Hatcher T arranged A250

DUTEC 180 Advanced Studies: General Ultrasound • 3 CR*Prerequisite:* Acceptance into the program or permission of program chair. *Fee:* \$20.50 lab.

2066 A Hamilton N arranged B252

DUTEC 181 Advanced Studies: Echo-Vascular • 3 CR*Prerequisite:* Acceptance into the program or permission of program chair.

2070 A Grant R arranged B252

DUTEC 240 Clinical Practicum IV • 13 CR

Prerequisite: Acceptance into program, and completion of all prerequisite coursework with a grade of C or better, and DUTEC 210, 22 0 and 230. *Fee:* \$23.50 malpractice and liability.

2082 A Grant R arranged HOS

Digital Media Arts

IBIT (INSTITUTE FOR BUSINESS & INFORMATION TECHNOLOGY)

This is a professional/technical program.

DMA 100 Portfolio and Employment I • 2 CR

4800 HYA Slowinski M M 10:30a-12:15p R110AB
Section HYA is a hybrid class. On campus sessions meet on the day listed. The balance of instruction occurs online as directed by the course syllabus.

DMA 102 Digital Design and Storytelling • 5 CR

Recommended prerequisite or concurrent enrollment: DMA 100.

4802 HYA Garrow S T 8:30a-12:15p R110AB
Section HYA is a hybrid class. On campus sessions meet on the day listed. The balance of instruction occurs online as directed by the course syllabus.

DMA 103 Graphic Design Fundamentals • 5 CR

Recommended prerequisite or concurrent enrollment: DMA 100.

Fee: \$57.50 computer use.

4804 HYA Garrow S Th 8:30a-12:15p N202
Section HYA is a hybrid class. On campus sessions meet on the day listed. The balance of instruction occurs online as directed by the course syllabus.

DMA 104 Motion Graphic Fundamentals • 5 CR

Recommended prerequisite or concurrent enrollment: DMA 100.

Fee: \$57.50 computer use.

4806 A Prigg R MW 5:00p-8:45p N202

DMA 106 Animation and Game Design Fundamentals • 5 CR

Recommended prerequisite or concurrent enrollment: DMA 100.

Fee: \$57.50 computer use.

4808 A Bagaason T TTh 5:00p-8:45p N209

DMA 108 Video Fundamentals • 5 CR

Recommended prerequisite or concurrent enrollment: DMA 100.

Fee: \$57.50 computer use.

4810 A Bruckner D TTh 1:00p-4:45p N202

DMA 140 Gaming Theory • 5 CR

Fee: \$57.50 computer use.

4812 A Bagaason T TTh 8:30a-12:15p N209

DMA 290 Portfolio Presentation and Review • 1 CR

Prerequisite: DMA 201 and permission of instructor.

4814 OAS Slowinski M arranged A254

DMA 292 Internship in Digital Media Arts • 5 CR

Prerequisite: Permission of instructor. *Recommended:* DMA 201 & 290.

4824 OAS Slowinski M arranged A254

DMA 294 Special Topics: Particle Animation • 5 CR

Prerequisite: Previous media enrollment and permission of program chair. *Fee:* \$57.50 computer use.

4816 A Prigg R MW 1:00p-4:45p N209

DMA 295 Special Topics: Coding for Games • 5 CR

Prerequisite: Previous media enrollment and permission of program chair. *Fee:* \$57.50 computer use.

4818 A Prigg R MW 8:30a-12:15p N209

DMA 296 Special Topics: Digital Painting • 5 CR

Prerequisite: Previous media enrollment and permission of program chair. *Fee:* \$57.50 computer use.

4820 A Garrow S TTh 1:00p-4:45p N209

DMA 297 Special Topics: Video Production Practicum • 5 CR

Prerequisite: Previous media enrollment and permission of program chair. *Fee:* \$57.50 computer use.

4822 A Bruckner D TTh 5:00p-8:45p N202

DMA 299 Independent Study in Digital Media Arts • 5 CR

Prerequisite: Completion of 45 credits of Digital Media Arts instruction and permission of instructor.

4829 A staff arranged A254

DMA 299 Independent Study in Digital Media Arts • 5 CR

Prerequisite: Completion of 45 credits of Digital Media Arts instruction and permission of instructor.

4830 B staff arranged A254

Drama

ARTS & HUMANITIES DIVISION

See Theatre Arts, page 21.

Early Learning & Teacher Education

HEALTH SCIENCES, EDUCATION & WELLNESS INSTITUTE

ECED& 100 Child Care Basics • 3 CR

2000 OAS Wood D online R130

ECED& 107 Health, Safety, and Nutrition • 5 CR

2020 OAS Emmert S online R130

ECED& 190 Observation and Assessment • 3 CR

2030 OAS Romppanen S online R130

Economics

SOCIAL SCIENCE DIVISION

ECON 100 Introduction to Basic Economic Principles • 5 CR

Business & Economic majors who plan to transfer to a 4-year institution should generally take ECON& 201 or ECON& 202 rather than ECON 100.

5100 OAS Jackson H online D110
Section OAS ends on 8/28.

ECON& 201 Microeconomics • 5 CR

5105 A Stiehl C MTWTh 9:30a-11:20a A208

5106 B Stiehl C MTWTh 11:30a-1:20p A208

5107 OAS Geib E online D110

5108 OBS Lawrence L online D110

Sections OAS and OBS end on 8/28.

ECON& 202 Macroeconomics • 5 CR

5115 A Christopherson B MTWTh 9:30a-11:20a L219

5116 B Curtis S MTWTh 11:30a-1:20p C165

5117 OAS Robbins G online D110

5118 OBS Robbins G online D110

Sections OAS and OBS end on 8/28.

Education

HEALTH SCIENCES, EDUCATION & WELLNESS INSTITUTE

EDUC& 115 Child Development • 5 CR

2040 OAS Seibel M online R130

English

ARTS & HUMANITIES DIVISION

Students planning to take English composition and/or reading classes must have the proper assessment. For more information, call (425) 564-2243 or go to the Student Services building. All reading courses require two to four hours per week of independent work in the Reading Lab in addition to regular class meetings.

COMPOSITION & READING

Students planning to take English composition and/or reading classes must have the proper assessment. For more information, call (425) 564-2243 or go to the Student Services building. All reading courses require two to four hours per week of independent work in the Reading Lab in addition to regular class meetings.

ENGL 071/080 Developmental English linked with Improving Reading Skills (Reading Lab) • 11 CR

Prerequisite: Placement by assessment. Course requires two hours per week of independent work in the Reading Lab in addition to regular class meetings. Plan to spend one hour in the Reading Lab during the first week of the quarter for orientation. Class graded credit/no credit. First class meets in D106. Enter through the Library. *Fee:* \$44 lab.

1010 A staff MTWTh 9:30a-1:20p R209

ENGL 080 Improving Reading Skills Reading Lab • 1 CR

Class is graded credit/no credit. Plan to spend one hour in the Reading Lab during the first week of the quarter for orientation. *Fee:* \$22 lab.

1000 A staff arranged D202

ENGL 091 Basic Grammar & Sentence Patterns • 5 CR

Prerequisite: Placement in ENGL 071 or higher.

1012 A Bessho S MTWTh 11:30a-1:20p R206

ENGL 092 Developmental English • 5 CR

Prerequisite: Placement by assessment. *Fee:* \$22 lab

1015 HYA Lepeintre S MW 9:30a-11:20a L214
Section HYA is a hybrid class. On campus sessions meet on the days listed. The balance of instruction occurs online as directed by the course syllabus.

1016 B staff MTWTh 11:30a-1:20p R101

1017 C staff TTh 6:00p-9:45p R209

1020 OAS White K online R230

1021 OBS Pope D online R230

ENGL 092 Developmental English • 5 CR**ENGL& 101 English Composition I • 5 CR**

The Accelerated Composition Track allows students with ENGL 092 or ENGL 093 placement to enroll in an accelerated sequence of two five-credit classes to complete ENGL 092 or ENGL 093 and ENGL 101 in the same quarter. One hour is a regular ENGL 101 class, and the other is a smaller support class to work more deeply on the ENGL 101 assignments while getting extra time and practice with the 101 instructor. *Prerequisite:* Placement by assessment *Fee:* \$22 lab.

1014 XA Butler B MTWTh 9:30a-11:20a A240

ENGL 093 Composition for Non-Native Speakers • 5 CR*Prerequisite:* Placement by assessment. *Fee:* \$22 lab.

1024 A	Austin-Miranda	MTWTh	9:30a-11:20a	R208
1025 B	Cross C	MTWTh	11:30a-1:20p	R208
1026 C	staff	TTh	6:00p-9:45p	R306
1027 OAS	White K	online		R230
1028 OBS	Pope D	online		R230

ENGL 093 Composition for Non-Native Speakers • 5 CR**ENGL& 101 English Composition I • 5 CR**

The Accelerated Composition Track allows students with ENGL 092 or ENGL 093 placement to enroll in an accelerated sequence of two five-credit classes to complete ENGL 092 or ENGL 093 and ENGL 101 in the same quarter. One hour is a regular ENGL 101 class, and the other is a smaller support class to work more deeply on the ENGL 101 assignments while getting extra time and practice with the 101 instructor. *Prerequisite:* Placement by assessment *Fee:* \$22 lab.

1023 XA	Allen S	MTWTh	9:30a-11:20a	R205
---------	---------	-------	--------------	------

ENGL& 101 English Composition I • 5 CR*Prerequisite:* Placement by assessment or ENGL 092 or 093 with a C- or better. *Fee:* \$22 lab

1031 A	Magie E	MTWTh	7:30a-9:20a	R205
1032 B	Magie E	MTWTh	9:30a-11:20a	R301
1034 H	HYA Hemmen I	MW	9:30a-11:20a	R304
1035 H	HYB Miguel O	TTh	9:30a-11:20a	R304

Sections HYA & HYB are hybrid classes. On campus sessions meet on the days listed. The balance of instruction occurs online as directed by the course syllabus.

1037 D	Butler B	MTWTh	11:30a-1:20p	A240
1039 E	Allen S	MTWTh	11:30a-1:20p	R205
1040 F	Beasley M	MTWTh	11:30a-1:20p	D274B
1042 H	HYC Hemmen I	MW	11:30a-1:20p	R201

Section HYC is a hybrid class. On campus sessions meet on the days listed. The balance of instruction occurs online as directed by the course syllabus.

1050 H	Pope D	TTh	6:00p-9:45p	R201
1043 OAS	Torrence J	online		R230
1044 OBS	Andrus P	online		R230
1045 OCS	Andrus P	online		R230
1046 ODS	Lopez-Kopp	online		R230
1047 OES	Lopez-Kopp	online		R230
1048 OFS	Goldsmith J	online		R230

ENGL 105 Grammar & Communication • 5 CR*Prerequisite:* Placement by assessment, or ENGL 092 or 093 with a C- or better.

1052 A	Bessho S	MTWTh	11:30a-1:20p	R206
--------	----------	-------	--------------	------

ENGL 180 Critical Reading in the Humanities Lab • 1 CR

Course requires two to four hours per week of independent work in the Reading Lab. Plan to spend one hour in the Reading Lab during the first week of the quarter for orientation. *Fee:* \$22 lab.

1005 A	staff	arranged		D202
--------	-------	----------	--	------

ENGL 201 The Research Paper • 5 CR*Prerequisite:* ENGL& 101 or equivalent course from another college with a C- or better. Same as ENGL 102. Either ENGL 102 or ENGL 201 may be taken for credit, not both. *Fee:* \$22 computer use.

1053 A	Beasley M	MTWTh	9:30a-11:20a	R206
1054 H	HYA Olson G	MW	9:30a-11:20a	C167
1055 H	HYB Dicus J	TTh	9:30a-11:20a	C167

Sections HYA & HYB are hybrid classes. On campus sessions meet on the days listed. The balance of instruction occurs online as directed by the course syllabus.

1056 B	Olson G	MTWTh	11:30a-1:20p	L120
1057 H	HYC Dicus J	TTh	11:30a-1:20p	R201

Section HYC is a hybrid class. On campus sessions meet on the days listed. The balance of instruction occurs online as directed by the course syllabus.

1058 C	staff	TTh	6:00p-9:45p	R205
1062 OAS	Yarborough S	online		R230
1063 OBS	Yarborough S	online		R230
1064 OCS	Burns L	online		R230
1065 ODS	Burns L	online		R230
1066 OES	Sebastian P	online		R230

ENGL& 235 Technical Writing • 5 CR*Prerequisite:* ENGL& 101 or equivalent course from another college with a C- or better. *Fee:* \$22 lab.

1070 H	HYA Mesch P	MW	9:30a-10:20a	R306
1071 H	HYB Walker L	TTh	9:30a-10:20a	R306

Sections HYA & HYB are hybrid classes. On campus sessions meet on the days listed. The balance of instruction occurs online as directed by the course syllabus.

1072 A	staff	MW	6:00p-9:40p	R202
1075 OAS	Dietrich S	online		R230
1076 OBS	Mesch P	online		R230
1077 OCS	Peterson K	online		R230

ENGL 237 Writing Fiction I • 5 CR*Fee:* \$22 lab. *Recommended:* ENGL& 101 placement or higher.

1081 A	Cross C	MTWTh	9:30a-11:20a	R303
--------	---------	-------	--------------	------

ENGL 238 Writing Fiction II • 5 CR*Fee:* \$22 lab *Prerequisite:* ENGL 237 with a C- or better.

1082 A	Cross C	MTWTh	9:30a-11:20a	R303
--------	---------	-------	--------------	------

ENGL 239 Writing Fiction III • 5 CR*Prerequisite:* ENGL 238 with a C- or better, or entry code. *Fee:* \$22 lab.

1083 A	Cross C	MTWTh	9:30a-11:20a	R303
--------	---------	-------	--------------	------

ENGL 247 Writing Poetry I • 5 CR*Recommended:* ENGL& 101 placement or higher.

1085 OAS	Kraus E	online		R230
----------	---------	--------	--	------

ENGL 248 Writing Poetry II • 5 CR*Prerequisite:* ENGL 247 with a C- or better.

1086 OAS	Kraus E	online		R230
----------	---------	--------	--	------

ENGL 249 Writing Poetry III • 5 CR*Prerequisite:* ENGL 248 with a C- or better, or entry code.

1087 OAS	Kraus E	online		R230
----------	---------	--------	--	------

ENGL 253 Writing Creative Non-fiction I • 5 CR*Recommended:* ENGL& 101 placement or higher.

1090 OAS	Harazim E	online		R230
----------	-----------	--------	--	------

ENGL 254 Writing Creative Non-fiction II • 5 CR*Prerequisite:* ENGL 253 with a C- or better.

1091 OAS	Harazim E	online		R230
----------	-----------	--------	--	------

ENGL 255 Writing Creative Non-fiction III • 5 CR*Prerequisite:* ENGL 254 with a C- or better.

1092 OAS	Harazim E	online		R230
----------	-----------	--------	--	------

ENGL 271 Expository Writing I • 5 CR*Prerequisite:* ENGL& 101 or equivalent course from another college with a C- or better.

1095 OAS	Harazim E	online		R230
1096 OBS	White K	online		R230

ENGL 272 Expository Writing II • 5 CR*Prerequisite:* ENGL 271 with a C- or better.

1098 OAS	Harazim E	online		R230
1099 OBS	White K	online		R230

English – Literature**ARTS & HUMANITIES DIVISION**

The English Department recommends that students taking literature courses have college-level reading placement.

ENGL& 111 Introduction to Literature I • 5 CR*Recommended:* ENGL& 101 placement or higher.

1105 OAS	Torrence J	online		R230
----------	------------	--------	--	------

ENGL 223 Children's Literature • 5 CR*Recommended:* ENGL& 101 or ENGL 201 or a literature course in the 100 series.

1108 OAS	Lepeintre S	online		R230
----------	-------------	--------	--	------

English as a Second Language (ESL)**ARTS & HUMANITIES DIVISION**

See Developmental Education, page 13.

English Language Institute**ARTS & HUMANITIES DIVISION**

The English Language Institute offers English language training for all non-native speakers of English, including immigrants, refugees, permanent residents, U.S. citizens, and foreign nationals holding all types of visas. You can register for the following classes by phone, online or on campus with International Student Programs House 6. Payment is due at the time of registration. For additional information about our programs or to register, please call (425) 564-3185. Books and other classroom materials can be purchased at the BC Bookstore. English Language Institute classes meet June 30 through August 14. Classes do not meet on July 4.

CREDIT CLASSES**ELI-UNIVERSITY PREP****ELIUP 100 University Preparation**

The English Language Institute offers intensive English language training for foreign students preparing to enter U.S. colleges or universities. *Tuition:* \$TBA.

6100 A	staff	daily	9:30a-3:40p	TBA
--------	-------	-------	-------------	-----

Students must attend testing days on 6/25. Class meets 6/30-8/14. No class 7/4.

ELIUP 001 Reading*Tuition:* \$TBA.

6101 A	staff	daily	1:00p-2:15p	TBA
--------	-------	-------	-------------	-----

Students must attend testing days on 6/25. Class meets 6/30-8/14. No class 7/4.

ELIUP 002 Speaking / Listening*Tuition:* \$TBA.

6102 A	staff	daily	2:25p-3:40p	TBA
--------	-------	-------	-------------	-----

Students must attend testing days on 6/25. Class meets 6/30-8/14. No class 7/4.

ELIUP 003 Writing*Tuition:* \$TBA.

6103 A	staff	daily	9:30a-12:00p	TBA
--------	-------	-------	--------------	-----

Students must attend testing days on 6/25. Class meets 6/30-8/14. No class 7/4.



INTERNATIONAL BUSINESS PROFESSION PROGRAM (IBP)

IBP 076 International Business

Prerequisite: Approved into program by the program director.
Tuition: \$TBA.

6715 A	staff	MTWTh	12:30p-2:00p	TBA
6716 B	staff	MTWTh	12:30p-2:00p	TBA
6717 C	staff	MTWTh	12:30p-2:00p	TBA

Class meets 6/30-8/14. No class 7/4.

IBP 077 Observation Preparation

Prerequisite: Must be IBP student, international student eligible for practical training or other non-native speaker of English approved by the program director. **Tuition:** \$TBA.

6720 A	staff	MTWTh	2:30p-4:10p	TBA
6721 B	Staff	MTWTh	2:30p-4:10p	TBA
6722 C	Staff	MTWTh	2:30p-4:10p	TBA

Class meets 6/30-8/14. No class 7/4.

IBP 096 Workplace Support

Prerequisite: Approved into program by the program director.
Tuition: \$TBA.

6735 A	staff	F	9:30a-10:55a	TBA
6736 B	staff	F	9:30a-10:55a	TBA
6737 C	staff	F	9:30a-10:55a	TBA

Class meets 7/11-8/8 (additional class TBA).

NON-CREDIT ESL

ACADEMIC & PROFESSIONAL ENGLISH

English Language Institute classes meet June 30 through August 14. Classes do not meet on July 4.

ELENG 021 English Conversation

Tuition: \$250.

8234 A	staff	MW	9:30a-11:20a	TBA
--------	-------	----	--------------	-----

Class meets 6/30-8/13. No class 7/4.

8235 B	staff	TTh	6:30p-8:20p	TBA
--------	-------	-----	-------------	-----

Class meets 7/1-8/14.

ELENG 041 Grammar Review 2

Tuition: \$250.

8248 A	Cocco S	MW	10:30a-12:20p	TBA
--------	---------	----	---------------	-----

Class meets 6/30-8/13. No class 7/4.

ELENG 081 TOEFL Preparation

Tuition: \$283.50 plus computer fees

8268 B	Raskin S	TTh	5:30p-7:50p	TBA
--------	----------	-----	-------------	-----

Class meets 7/1-8/14.

ELISP 011 Accent Reduction

Tuition: \$250.

8276 B	Staff	MW	6:30p-8:20p	TBA
--------	-------	----	-------------	-----

Class meets 6/30-8/13. No class 7/4.

ELISP 021 Business Communication

Tuition: \$250.

8279 A	staff	TTh	6:30p-8:20p	TBA
--------	-------	-----	-------------	-----

Class meets 7/1-8/14.

Environmental Science

SCIENCE DIVISION

ENVS& 100 Survey of Environmental Science • 5 CR

Fulfills natural science course requirement at BC.

3514 A	Senft A	MTWTh	9:30a-11:20a	\$224
3518 OAS	Steinert-Eger K	online		L200

Section OAS meets 7/1-8/28 (9 weeks).

Experiential Learning

ARTS & HUMANITIES DIVISION

EXPLR 220 Resume & Interviewing Strategies • 2 CR

1308 A	Mesch P	F	6:00p-9:00p	R202
	also meets	Sa	9:00a-5:00p	R202

Class meets 7/18, 7/19, 7/25 & 7/26. First class meeting on 7/18 is in N201.

1309 B	Jones W	F	6:00p-9:00p	R202
	also meets	Sa	9:00a-5:00p	R203

Class meets 7/18, 7/19, 7/25 & 7/26. First class meeting on 7/18 is in N201.

French

ARTS & HUMANITIES DIVISION

See World Languages, page 21.

General Education Development (GED)

ARTS & HUMANITIES DIVISION

See Developmental Education, page 13.

Geography

SOCIAL SCIENCE DIVISION

GEOG& 100 Introduction to Geography • 5 CR

5150	HVA	Walker I	MW	9:30a-11:20a	D273
------	-----	----------	----	--------------	------

Section HYA is a hybrid class. On campus sessions meet on the days listed. The balance of instruction occurs online as directed by the course syllabus.

5151 B	Walker I	MW	6:00p-9:45p	D273
5152 OAS	Walker G	online		D110
5153 OBS	Walker G	online		D110

GEOG 106 Introduction to Natural Hazards & Disasters • 5 CR

Same as GEOL 106. Either GEOG 106 or GEOL 106 may be taken for credit, not both. Fulfills a natural science course requirement at BC.

5166	HVA	Walker I	TTh	9:30a-11:20a	D273
------	-----	----------	-----	--------------	------

Section HYA is a hybrid class. On campus sessions meet on the days listed. The balance of instruction occurs online as directed by the course syllabus.

5167 OAS	Roselle D	online		D110
5168 OBS	Jones G	online		D110
5169 OCS	Roselle D	online		D110

GEOG 123 Introduction to Globalization • 5 CR

5171 OAS	Walker G	online		D110
----------	----------	--------	--	------

GEOG 205 Geography of Weather & Climate change • 5 CR

Fulfills natural science course requirement at BC.

5175 OAS	Walker G	online		D110
----------	----------	--------	--	------

Geology

SCIENCE DIVISION

GEOL& 101 Introduction to Physical Geology • 6 CR

Fulfills natural science course requirement at BC. **Fee:** \$41 science lab.

3534 A	Minium D	MW	9:30a-12:00p	B262
	also meets	TTh	9:30a-12:00p	B264

GEOL 106 Introduction to Natural Hazards & Disasters • 5 CR

Same as GEOG 106. Either GEOG 106 or GEOL 106 may be taken for credit, not both. Fulfills a natural science course requirement at BC.

3536	HVA	staff	TTh	9:30a-11:20a	D273
------	-----	-------	-----	--------------	------

Section HYA is a hybrid class. On campus sessions meet on the days listed. The balance of instruction occurs online as directed by the course syllabus.

3540 OAS	Roselle D	online		L200
3542 OBS	Jones G	online		L200

3544 OCS	Roselle D	online		L200
----------	-----------	--------	--	------

German

ARTS & HUMANITIES DIVISION

See World Languages, page 21.

Healthcare Technology Management

HEALTH SCIENCES, EDUCATION & WELLNESS INSTITUTE

New Fall 2012. Healthcare Technology and Management Bachelors of Applied Science Degree (BAS) with a concentration in Healthcare Information Technology (HCTM). This is a selective admission program. For more information about the program, requirements and how to apply, visit www.bellevuecollege.edu/hctm/. This program is self-supporting and is not eligible for general tuition waivers.

HCTM 150 Healthcare Technology Environment and Security • 5 CR

Recommended: Background in either an IT-related or Healthcare-related field. **Fee:** \$625.20.

2400 OAC	Dwarka S	online		A241
----------	----------	--------	--	------

HCTM 175 HIT Systems Life Cycle Management • 5 CR

Recommended: Background in either an IT-related or Healthcare-related field. **Fee:** \$625.20.

2402 OAC	Dwarka S	online		A241
----------	----------	--------	--	------

HCTM 375 HIT Project Management • 5 CR

Prerequisite: Acceptance into program or permission of instructor. **Fee:** \$625.20.

2404 OAC	Warfield M	online		A241
----------	------------	--------	--	------

History

SOCIAL SCIENCE DIVISION

HIST 101 History of Civilization Cultural Traditions • 5 CR

May be used as social science or humanities course requirement, not both, at BC.

5201 A	Barnette M	MTWTh	11:30a-1:20p	D274A
5200 OAS	Haines E	online		D110

HIST 102 History of Civilization Middle Ages • 5 CR

May be used as social science or humanities course requirement, not both, at BC.

5205 OAS	Haines E	online		D110
----------	----------	--------	--	------

**HIST 103 History of Civilization
Contemporary World • 5 CR**

May be used as social science or humanities course requirement, not both, at BC.

5208 A	Barnette M	MTWTh	9:30a-11:20a	D274C
5209 OAS	Heinrich T		online	D110

HIST& 146 US History I • 5 CR

May be used as social science or humanities course requirement, not both, at BC.

5218 OAS	Sanchez S		online	D110
----------	-----------	--	--------	------

HIST& 147 US History II • 5 CR

May be used as social science or humanities course requirement, not both, at BC.

5222 OAS	Heinrich T		online	D110
----------	------------	--	--------	------

HIST& 148 US History III • 5 CR

May be used as social science or humanities course requirement, not both, at BC.

5226 OAS	Sanchez S		online	D110
----------	-----------	--	--------	------

Human Development**STUDENT SERVICES**

Human Development courses assist students to achieve their education goals through personal awareness and growth.

HD 101 Healthy Self-Esteem • 2 CR

6000 LSA	Taplin R	F	4:30p-8:30p	R202
	also meets	SaSu	8:30a-5:30p	R202

Section LSA is a late start class that meets 7/11, 7/12 & 7/13. Attendance required at all sessions.

**HD 103 International Student First
Year Experience • 2 CR****Prerequisite:** Required for all new F-1 students on BC's I-20 and permission of instructor.

6002	Bradford N	Th	4:30p-8:30p	R204
	also meets	F	8:30a-5:30p	R204
6004	staff	Th	4:30p-8:30p	R203
	also meets	F	8:30a-5:30p	R203

Sections HYA and HYB are hybrid classes that meet 7/10 & 7/11. On campus sessions meet on the days listed. The balance of instruction occurs online as directed by the course syllabus. Attendance required at all sessions.

HD 110 Stress Management • 3 CR

6006 OAS	Lee H		online	B234
----------	-------	--	--------	------

**HD 120 Learning Strategies for
Student Success • 2 CR****Recommended:** Placement in ENGL 089 or above.

6007 LSA	Tong M	F	4:30p-8:30p	R202
	also meets	SaSu	8:30a-5:30p	R202

Section LSA is a late start class that meets 7/25, 7/26 & 7/27. Attendance required at all sessions.

**HD 125 Motivation and
Empowerment • 3 CR**

6010 OAS	Luzzi B		online	B234
----------	---------	--	--------	------

**HD 131 Understanding Personal
Relationships • 2 CR**

6012 LSA	Brodsky B	F	4:30p-8:30p	R110AB
	also meets	SaSu	8:30a-5:30p	R110AB

Section LSA is a late start class that meets 7/18, 7/19 & 7/20. Attendance required at all sessions.

HD 173 Career Exploration • 2 CR**Fee:** \$40.50 testing fee will be charged for all sections.

6016 A	Martel S	TTh	9:30a-11:20a	L214
--------	----------	-----	--------------	------

Information Technology**IBIT (INSTITUTE FOR BUSINESS
& INFORMATION TECHNOLOGY)**

This is a professional/technical program.

**IT 101 Introduction to Information
Technology • 5 CR****Prerequisite:** Placement by assessment into ENGL 089. Completion of ENGL 092 or 093.

4602 OAS	staff		online	A254
----------	-------	--	--------	------

IT 128 Information Security Essentials • 5 CR**Prerequisite:** TECH 217 or IT 103; required attendance at first meeting 07/01, 11:00a-12:00p in A251. Class ends 8/22.

4604 OAS	Helm R		online	A254
----------	--------	--	--------	------

International Studies**SOCIAL SCIENCE DIVISION****INTST 150 International Business • 5 CR**

5300 A	Vaughan D	MTWTh	11:30a-1:20p	L221
--------	-----------	-------	--------------	------

Interior Design**ARTS & HUMANITIES DIVISION**

The Interior Design program is suitable for anyone with a serious interest in Interior Design. We offer an AA Interior Studies and many classes of interest to working professionals. We also offer a Bachelor of Applied Arts degree as a self-supporting program. The BAA welcomes applications from candidates with AA degrees in Interior Design or related fields. BAA Interior Design Courses are not eligible for tuition waivers.

INDES 140 Introduction to Interior Design • 5 CR**Fee:** \$60 lab.

1600 A	Davis P	MWTh	12:30p-4:15p	L214
--------	---------	------	--------------	------

INDES 167 Digital Design Tools • 2 CR**Fee:** \$60 lab

1610 A	Beert D	MW	2:30p-4:40p	L116
--------	---------	----	-------------	------

INDES 169 Sketch Up • 3 CR**Fee:** \$57.50 computer use.

1620 A	Beert D	TWTh	6:00p-8:50p	L116
--------	---------	------	-------------	------

INDES 179 Perspective Drawing • 5 CR

1630 A	Wilson S	TWTh	9:30a-1:15p	L110
--------	----------	------	-------------	------

INDES 267 Digital Design Presentation • 5 CR**Prerequisite:** INDES 171 with a C- or better.

1640 A	Beert D	TTh	1:30p-4:20p	L116
--------	---------	-----	-------------	------

INDES 360 Introduction to Rhinoceros 3-D • 5 CR**Fee:** \$57.50 computer use.

1650 A	Passmore J	TWTh	5:30p-9:15p	L121
--------	------------	------	-------------	------

Marketing Management**IBIT (INSTITUTE FOR BUSINESS
& INFORMATION TECHNOLOGY)**

This is a professional/technical program.

MKTG 154 Principles of Marketing • 5 CR4365 staff Th 1:30p-4:30p C208
Section HYA is a hybrid class. On campus sessions meet on the days listed. The balance of instruction occurs online as directed by the course syllabus.

4367 OAS	staff		online	A254
----------	-------	--	--------	------

Mathematics**SCIENCE DIVISION**

Please look online for Math instructor information

MATH 075 Improving Basic Math Skills • 5 CR

May be repeated for a maximum of 10 credits.

3561 2C staff MTWTh 9:30a-11:20a C166
Section 2C will be taught using interactive software. Textbooks are included in the licensing fee paid at the BC Bookstore. Additional **Fee:** \$32.30 classroom computer usage.**MATH 097 Introductory Algebra I • 5 CR****Prerequisite:** Basic arithmetic skills3567 1C staff MTWTh 7:30a-9:20a C166
Section 1C will be taught using interactive software. Textbooks are included in the licensing fee paid at the BC Bookstore. Additional **Fee:** \$32.30 classroom computer usage.

3571 C1	staff	MTWTh	11:30a-1:20p	L218
---------	-------	-------	--------------	------

3573 D1	staff	MTWTh	1:30p-3:20p	R302
---------	-------	-------	-------------	------

3577 F1	staff	MW	6:00p-9:45p	L211
---------	-------	----	-------------	------

Sections C1, D1 & F1 do not use interactive software. Please purchase textbooks at the beginning of the quarter.

MATH 098 Introductory Algebra II • 5 CR**Prerequisite:** Placement by assessment, or MATH 085 or 097 with a C- or better.3481 3C staff MTWTh 11:30a-1:20p C166
Section 3C will be taught using interactive software. Textbooks are included in the licensing fee paid at the BC Bookstore. **Additional Fee:** \$32.30 classroom computer usage.

3585 A1	staff	MTWTh	7:30a-9:20a	L218
---------	-------	-------	-------------	------

3587 B1	staff	MTWTh	9:30a-11:20a	R302
---------	-------	-------	--------------	------

3593 F1	staff	TTh	6:00p-9:45p	L211
---------	-------	-----	-------------	------

Sections A1, B1 & F1 do not use interactive software. Please purchase textbooks at the beginning of the quarter.

MATH 099 Intermediate Algebra • 5 CR**Prerequisite:** Placement by assessment or MATH 098 with a C or better.

3597 A1	staff	MTWTh	7:30a-9:20a	C254
---------	-------	-------	-------------	------

3601 B1	staff	MTWTh	9:30a-11:20a	C254
---------	-------	-------	--------------	------

3603 C1	staff	MTWTh	11:30a-1:20p	C254
---------	-------	-------	--------------	------

3609 F1	staff	MW	6:00p-9:45p	L218
---------	-------	----	-------------	------

3613 OAS	staff		online	L200
----------	-------	--	--------	------

3615 OBS	staff		online	L200
----------	-------	--	--------	------

3617 OCS	staff		online	L200
----------	-------	--	--------	------

Sections OAS, OBS & OCS require proctored exams. For questions, please visit www.bellevuecollege.edu/distance/. Online classes meet 7/1-8/28.**MATH& 107 Math in Society • 5 CR****Prerequisite:** Placement by assessment or MATH 098 with a C or better.

3621 A1	staff	MTWTh	7:30a-9:20a	R302
---------	-------	-------	-------------	------

MATH 130 Introduction to Statistics • 5 CR**Prerequisite:** Placement by assessment or MATH 098 with a C or better.

3625 A1	staff	MTWTh	7:30a-9:20a	L211
---------	-------	-------	-------------	------

3629 C1	staff	MTWTh	11:30a-1:20p	S224
---------	-------	-------	--------------	------

3631 D1	staff	MTWTh	1:30p-3:20p	R311
---------	-------	-------	-------------	------

3639 OAS	staff		online	L200
----------	-------	--	--------	------

3641 OBS	staff		online	L200
----------	-------	--	--------	------

3643 OCS	staff		online	L200
----------	-------	--	--------	------

Sections OAS, OBS & OCS require proctored exams. For questions, please visit www.bellevuecollege.edu/distance/. Online classes meet 7/1-8/28.

MATH 138 College Algebra for Business & Social Science • 5 CR

Prerequisite: Placement by assessment or MATH 099 with a B- or better. Either MATH 138 or MATH& 141 may be taken for credit, not both.

3651	C1	staff	MTWTh	11:30a-2:20p	L213
3657	F1	staff	TTh	6:00p-9:45p	L218
3661	OAS	staff		online	L200
3663	OBS	staff		online	L200

Sections OAS & OBS require proctored exams. For questions, please visit www.bellevuecollege.edu/distance/. Online classes meet 7/1-8/28.

MATH& 141 Precalculus I • 5 CR

Prerequisite: Placement by assessment or MATH 099 with a B- or better. Either MATH& 141 or MATH 138 may be taken for credit, not both. Fulfills quantitative or symbolic reasoning course requirement at BC.

3667	A1	staff	MTWTh	7:30a-9:20a	L212
3669	B1	staff	MTWTh	9:30a-11:20a	L213
3671	C1	staff	MTWTh	11:30a-1:20p	R302
3677	F1	staff	MW	6:00p-9:45p	L213
3681	OAS	staff		online	L200

Sections OAS require proctored exams. For questions, please visit www.bellevuecollege.edu/distance/. Online classes meet 7/1-8/28.

MATH& 142 Precalculus II • 5 CR

Prerequisite: Placement by assessment or MATH& 141 with a C- or better.

3685	A1	staff	MTWTh	7:30a-9:20a	L213
3687	B1	staff	MTWTh	9:30a-11:20a	L218
3695	F1	staff	TTh	6:00p-9:45p	L212
3699	OAS	staff		online	L200

Sections OAS require proctored exams. For questions, please visit www.bellevuecollege.edu/distance/. Online classes meet 7/1-8/28.

MATH& 148 Business Calculus • 5 CR

Prerequisite: Placement by assessment, or MATH 138 with a C- or better. Either MATH& 148 or MATH& 151 may be taken for credit, not both. Fulfills the quantitative or symbolic reasoning course requirement at BC.

3705	A1	staff	MTWTh	7:30a-9:20a	S223
3713	F1	staff	MW	6:00p-9:45p	L212
3717	OAS	staff		online	L200

Sections OAS require proctored exams. For questions, please visit www.bellevuecollege.edu/distance/. Online classes meet 7/1-8/28.

MATH& 151 Calculus I • 5 CR

Prerequisite: Placement by assessment, or MATH& 142 with a C- or better, or Advanced Placement score of 2 or higher on AB or BC exam. Either MATH& 151 or MATH& 148 may be taken for credit, not both. Fulfills the quantitative or symbolic reasoning course requirement at BC.

3721	A1	staff	MTWTh	7:30a-9:20a	R311
3723	B1	staff	MTWTh	9:30a-11:20a	R311
3725	C1	staff	MTWTh	11:30a-1:20p	R311

MATH& 152 Calculus II • 5 CR

Recommended: MATH& 151.

3737	B1	staff	MTWTh	9:30a-11:20a	L212
3739	C1	staff	MTWTh	11:30a-1:20p	L212

MATH& 153 Calculus III • 5 CR

Recommended: MATH& 152.

3751	B1	staff	MTWTh	9:30a-11:20a	L211
------	----	-------	-------	--------------	------

MATH& 254 Calculus IV • 5 CR

Recommended: MATH& 152.

3767	C1	staff	MTWTh	11:30a-1:20p	L211
------	----	-------	-------	--------------	------

Meteorology**SCIENCE DIVISION****METR 101 Introduction to the Weather • 5 CR**

3854	OAS	Short K		online	L200
3856	OBS	Short K		online	L200

Music**ARTS & HUMANITIES DIVISION****MUSC& 105 Music Appreciation • 5 CR**

1805	OAS	Sisko J		online	R230
------	-----	---------	--	--------	------

MUSC 107 Fundamentals of Music • 5 CR

1810	OAS	Almli T		online	R230
1811	OBS	Almli T		online	R230
1812	OCS	Almli T		online	R230

MUSC 116 History of Rock & Roll • 5 CR

1815	OAS	Almli T		online	R230
1816	OBS	Sisko J		online	R230

MUSC 117 Music of the World • 5 CR

1820	OAS	Adams R		online	R230
------	-----	---------	--	--------	------

MUSC 130 Group Piano Instruction I • 2 CR

1825	A	Adams R	TTh	10:30a-12:20p	E222
------	---	---------	-----	---------------	------

Network Services & Computing Systems**IBIT (INSTITUTE FOR BUSINESS & INFORMATION TECHNOLOGY)**

This is a professional/technical program.

NSCOM 223 Managing a Network Environment • 5 CR

Prerequisite: NSCOM 221 at BC with a C- or better.

4622	OWS	Lee T		online	A254
------	-----	-------	--	--------	------

Section OWS is part of the Department of Labor (DOL) grant and requires a commitment to specific classes. For permission to register, please contact Tom Lee at Thomas.lee@bellevuecollege.edu or (425) 564-2504. Required attendance at first meeting 7/1, 5:30-7:40p in Room N251. Class ends 8/27.

NSCOM 294 Special Topics: Scripting • 2 CR

Prerequisite: Permission of instructor. **Fee:** \$57.50 computer use.

4624	HYA	Lee T	TTh	5:30p-7:40p	N251
------	-----	-------	-----	-------------	------

Section HYA is a hybrid class. On campus sessions meet on the days listed. The balance of instruction occurs online as directed by the course syllabus. Class ends 7/17.

NSCOM 299 Independent Studies: Network Services/Computing • 1 CR

Prerequisite: Permission of instructor.

4626	A	Lee T		arranged	A254
------	---	-------	--	----------	------

also meets arranged

Class ends 8/29.

Neurodiagnostic Technology**HEALTH SCIENCES, EDUCATION & WELLNESS INSTITUTE**

Neurodiagnostic Technology (NDT) offers an Associates in Arts Degree. This is a selective admission program. For more information about the program, requirements and how to apply, visit www.bellevuecollege.edu/ndt/.

NDT 132 EEG Clinical III • 5 CR

Prerequisite: NDT 131. **Fee:** \$23.50 malpractice insurance.

2900	A	Austin S		arranged	R130G
------	---	----------	--	----------	-------

Nuclear Medicine Technology**HEALTH SCIENCES, EDUCATION & WELLNESS INSTITUTE****NMTEC 212 Positron Emission Tomography • 1 CR**

Prerequisite: Acceptance into the program.

2100	A	Prekeges J		arranged	B241
------	---	------------	--	----------	------

Class meets 7/1-7/17.

NMTEC 232 Clinical Education III • 12 CR

Prerequisite: Acceptance into the program. **Fee:** \$150 clinical supervision.

2110	LSA	Prekeges J		arranged	HOS
------	-----	------------	--	----------	-----

Section LSA is a late start class that meets 7/22-9/19.

NMTEC 250 Sectional Anatomy for Nuclear Medicine • 3 CR

Prerequisite: Acceptance into the program or permission of program chair.

2130	OAS	Powell S		online	
------	-----	----------	--	--------	--

Section OAS is a late start online class that meets 7/14-9/5.

NMTEC 262 Clinical Nuclear Medicine III • 1 CR

Prerequisite: Acceptance into the program.

2120	A	Prekeges J		arranged	B241
------	---	------------	--	----------	------

Class meets 7/1-7/17.

Nursing**HEALTH SCIENCES, EDUCATION & WELLNESS INSTITUTE****NURS 110Z Nursing Fundamentals Clinical • 3 CR**

Prerequisite: NURS 110X, NURS 110Y. **Fee:** \$23.50 liability/malpractice insurance, \$33.34 Consortium fee.

2510	A	staff		arranged	HOS
------	---	-------	--	----------	-----

NURS 111X Acute Care Nursing I Theory • 6 CR

Prerequisite: NURS 110X.

2500	A	Root J		arranged	TBA
------	---	--------	--	----------	-----

NURS 234Z Professional Role Transitions Clinical • 6 CR

Prerequisite: NURS 234X. **Fee:** \$23.50 liability/malpractice insurance, \$33.34 Consortium fee.

2520	A	Root J		arranged	HOS
------	---	--------	--	----------	-----

NURS 401 Nursing Leadership • 3 CR

Prerequisite: Acceptance into the BSN program.

2550	HYA	Laux J		arranged	TBA
------	-----	--------	--	----------	-----

Section HYA is a hybrid class. On campus and online sessions meet as directed by the course syllabus.

NURS 412 Community and Public Health Nursing Clinical II • 2 CR

Prerequisite: Acceptance into BSN program and NURS 410 and 411. **Fee:** \$23.50 malpractice insurance.

2570	HYA	Weber S		arranged	HOS
------	-----	---------	--	----------	-----

Section HYA is a hybrid class. On campus and online sessions meet as directed by the course syllabus.

NURS 450 Nursing Health Information Technology • 3 CR

Prerequisite: Acceptance into the BSN program.

2590	HYA	Ludlow J		arranged	TBA
------	-----	----------	--	----------	-----

Section HYA is a hybrid class. On campus and online sessions meet as directed by the course syllabus.

Nutrition

SCIENCE DIVISION

NUTR 100 Personal Nutrition • 5 CR

Fulfills natural science course requirement at BC.

3870 A	staff	MTWTh	9:30a-11:20a	\$223
3874 OAS	staff	online		L200

NUTR& 101 Nutrition • 5 CR*Prerequisite:* BIOL& 160 or CHEM& 121 or concurrent enrollment in BIOL& 160. Fulfills natural science course requirement at BC.

3886 A	staff	MTWTh	11:30a-1:20p	\$223
3890 OAS	staff	online		L200

Oceanography

SCIENCE DIVISION

OCEA& 101 Introduction to Oceanography w/ Lab • 6 CRFulfills laboratory science course requirement at BC. *Fee:* \$41 science lab.

3914 OAS	Jones G	online		L200
3918 OBS	Jones G	online		L200

Occupational and Life Skills

SELECTIVE DEGREE PROGRAM

OLS at Bellevue College is an innovative 90 credit associate degree program unlike any other program in the nation. This program gives adults with cognitive disabilities the opportunity to acquire an accredited college degree that leads to post-graduation employment rates well above the national average. The curriculum is occupational and life skills based taught through scaffold instruction and universal design. All OLS courses focus on developing critical thinking skills, soft skills, and self-determination skills. Courses incorporate service learning in the community with local businesses as a way to help students utilize new skills outside of the classroom. Students create a career pathway over a 3 year period that is specific to their self-identified skills, strengths, and passions. An internship of 200 hours related to that career pathway is completed during their last 2 quarters. Additional information can be found at www.OLSatBellevueCollege.com.

No courses offered Summer Quarter.

Philosophy

ARTS & HUMANITIES DIVISION

PHIL& 101 Introduction to Philosophy • 5 CR

1900 A	Duncan S	MTWTh	9:30a-11:20a	L220
1901 B	Aleshire Z	MTWTh	11:30a-1:20p	D274C

PHIL 102 Contemporary Moral Problems • 5 CR

May be used as social science or humanities course requirement, not both, at BC.

1904 A	Linnemann T	MTWTh	9:30a-11:20a	D102
1905 OAS	Duncan S	online		R230

PHIL& 115 Critical Thinking • 5 CR

1908 OAS	Benchimol J	online		R230
----------	-------------	--------	--	------

PHIL& 120 Symbolic Logic • 5 CR*Prerequisite:* Placement by assessment into MATH 099, or completion of MATH 098 with a C or better. Fulfills science course requirement or quantitative skill course requirement at BC. Previously Phil& 106 - Introduction to Logic.

1911 A	Linnemann T	MTWTh	11:30a-1:20p	D102
--------	-------------	-------	--------------	------

PHIL 265 Biomedical Ethics • 5 CR

May be used as social science or humanities course requirement, not both, at BC.

1914 OAS	Benchimol J	online		R230
----------	-------------	--------	--	------

Physical Anthropology

SCIENCE DIVISION

ANTH& 205 Biological Anthropology • 5 CR

Same as ANTH& 215. Either ANTH& 205 or ANTH& 215 may be taken for credit, not both. Fulfills a natural science course requirement at BC.

5071 OAS	Tessandori A	online		D110
----------	--------------	--------	--	------

Physical Education

HEALTH SCIENCES, EDUCATION & WELLNESS INSTITUTE

PE 105 Yoga • 1 CR*Fee:* \$3.50 towel.

2170 A	Lowe R	W	8:00a-9:50a	R014
--------	--------	---	-------------	------

FITNESS CENTER

All students must attend an orientation. Orientations will be held Tuesday 7/1, every hour on the half hour beginning at 8:30am. Last orientation begins at 11:30am. Workouts begin Wednesday 7/2. For more information: www.bellevuecollege.edu/pelfitnesscenter/.

PE 110 Life Fitness Training I • 2 CR*Fee:* \$30.50 towel and equipment use.

2180 A	Prescott P	MTWTh	8:00a-12:00p	G102
--------	------------	-------	--------------	------

PE 111 Life Fitness Training II • 2 CR*Prerequisite:* PE 110 *Fee:* \$30.50 towel and equipment use.

2200 A	Prescott P	MTWTh	8:00a-12:00p	G102
--------	------------	-------	--------------	------

PE 112 Life Fitness Training III • 2 CR*Prerequisite:* PE 111 *Fee:* \$30.50 towel and equipment use.

2202 A	Prescott P	MTWTh	8:00a-12:00p	G102
--------	------------	-------	--------------	------

ADULT FITNESS**ADFIT 010 Adult Fitness Development I • 2 CR**A non-credit class option for community members only. No student registration. *Fee:* \$44 towel and equipment fee.

2150 A	Butler R	MTWTh	8:00a-12:00p	G102
--------	----------	-------	--------------	------

ADFIT 020 Adult Fitness Development II • 2 CRA non-credit class option for BC staff and faculty only. No student registration. *Fee:* \$44 towel and equipment fee.

2160 A	Butler R	MTWTh	8:00a-12:00p	G102
--------	----------	-------	--------------	------

PE 115 Hiking & Orienteering • 1 CR*Recommended:* Participants need to be able to walk 3-4 miles at a sustained pace. *Fee:* \$10 equipment rental.

2210 LSA	Prescott P	arranged		
----------	------------	----------	--	--

Section LSA is a late start class that meets 8/7-8/10. Class consists of a day hike and a two night, overnight backpacking trip.

PE 228 Life Fitness Internship • 1 CR*Prerequisite:* PE 267. *Fee:* \$3.50 towel.

2280 A	Prescott P	arranged		
--------	------------	----------	--	--

PE 240 Self-Defense • 2 CR*Fee:* \$3.50 towel.

2290 A	Hartwig B	TTh	9:00a-10:50a	R014
--------	-----------	-----	--------------	------

Physical Geography

SOCIAL DIVISION

GEOG 106 Introduction to Natural Hazards & Disasters • 5 CR

Same as GEOL 106. Either GEOG 106 or GEOL 106 may be taken for credit, not both. Fulfills a natural science course requirement at BC.

5167 OAS	Roselle D	online		D110
5168 OBS	Jones G	online		D110
5169 OBC	Roselle D	online		D110

GEOG 205 Weather Climate & Climate Change • 5 CR

Fulfills natural science course requirement at BC. Recommended: PSYC& 100.

5175 OAS	Walker G	online		D110
----------	----------	--------	--	------

Physical Psychology

SCIENCE DIVISION

PSYC 202 Introduction Physiological Psychology • 5 CR

5442 A	Bridwell V	MTWTh	11:30a-1:20p	B204
5116 HVA	Walker I	TTh	9:30a-11:20a	D273

Section HVA is a hybrid class. On campus sessions meet on the days listed. The balance of instruction occurs online as directed by the course syllabus.

Physics

SCIENCE DIVISION

PHYS 104 Discoveries in Physics • 6 CR*Prerequisite:* MATH 099. *Fee:* \$41 science lab.

3934 A	Hobbs R	MTWTh	8:30a-11:00a	B144
--------	---------	-------	--------------	------

PHYS& 114 General Physics I • 6 CR*Prerequisite:* MATH& 142 or equivalent. PHYS 104 is recommended for students with no background in physics. *Fee:* \$41 science lab.

3938 A	Whelan K	MTWTh	8:30a-11:00a	B121
--------	----------	-------	--------------	------

PHYS& 115 General Physics II • 6 CR*Prerequisite:* PHYS& 114. *Fee:* \$41 science lab.

3944 A	staff	MTWTh	11:30a-2:00p	B121
--------	-------	-------	--------------	------

PHYS& 116 General Physics III • 6 CR*Prerequisite:* PHYS 115. *Fee:* \$41 science lab.

3948 A	Waterburg M	TTh	5:30p-9:00p	B139
	also meets	M	5:30p-9:00p	B138

PHYS 121 General Engineering Physics I • 6 CR*Prerequisite:* High school physics or equivalent and MATH& 151 or permission of instructor. *Fee:* \$41 science lab.

3952 A	Bezirganyan S	MTWTh	8:30a-11:00a	B139
3954 B	Sepehri S	MTWTh	2:30p-5:00p	B139

PHYS 122 General Engineering Physics II • 6 CR*Prerequisite:* PHYS 121 and MATH& 152 or permission of instructor. *Fee:* \$41 science lab.

3958 A	Scott B	MTTh	5:30p-9:00p	B144
--------	---------	------	-------------	------

PHYS 123 General Engineering Physics III • 6 CR*Prerequisite:* PHYS 122 *Fee:* \$41 science lab.

3962 A	Sepehri S	MW	11:30a-2:00p	B139
	also meets	TTh	11:30a-2:00p	B144
3966 C	staff	MW	5:30p-9:00p	B139
	also meets	Th	5:30p-9:00p	B138

Political Science**SOCIAL SCIENCE DIVISION****POLS& 101 Introduction to Political Science • 5 CR**

5350 A	Paydar I	MTWTh	9:30a-11:20a	L221
5351 OAS	Jones T		online	D110

POLS 125 Introduction to Political Psychology • 5 CR

5354 OAS	Jones T		online	D110
----------	---------	--	--------	------

POLS& 202 American Government • 5 CR

5367 OAS	Jones T		online	D110
----------	---------	--	--------	------

POLS& 203 International Relations • 5 CR

5373 OAS	Staff		online	D110
----------	-------	--	--------	------

POLS 204 Introduction to Comparative Politics • 5 CR

5374 OAS	Staff		online	D110
----------	-------	--	--------	------

Psychology**SOCIAL SCIENCE DIVISION****PSYC& 100 General Psychology • 5 CR**

5401 A	Brislawn M	MTWTh	7:30a-9:20a	A138
5402 B	Pitkanen I	MTWTh	9:30a-11:20a	A138
5403 C	Pitkanen I	MTWTh	11:30a-1:20p	A138
5404	HYD Wanamaker D	M	6:00p-10:00p	R101

Section HYD is a hybrid class. On campus sessions meet on the days listed. The balance of instruction occurs online as directed by the course syllabus.

5405 OAS	Seiver J		online	D110
5406 OBS	Wales J		online	D110
5407 OCS	staff		online	D110

PSYC& 200 Lifespan Psychology • 5 CR*Prerequisite:* PSYC& 100.

5438 A	staff	MTWTh	9:30a-11:20a	R204
5439 OAS	Seibel M		online	D110
5440 OBS	Schrepfer S		online	D110

PSYC 202 Introduction to Physiological Psychology • 5 CR

Fulfills natural science course requirement at BC. *Recommended:* PSYC& 100.

5442 A	Bridwell V	MTWTh	11:30a-1:20p	B204
--------	------------	-------	--------------	------

PSYC 205 Theories of Personality • 5 CR*Recommended:* PSYC& 100.

5450 OAS	Seibel M		online	D110
----------	----------	--	--------	------

PSYC 210 Psychology of Human Sexuality • 5 CR*Recommended:* PSYC& 100.

5456 OAS	Seiver J		online	D110
----------	----------	--	--------	------

PSYC& 220 Abnormal Psychology • 5 CR*Prerequisite:* PSYC& 100.

5459 OAS	Curtis S		online	D110
----------	----------	--	--------	------

PSYC 240 Social Psychology • 5 CR*Recommended:* PSYC& 100.

5464 OAS	staff		online	D110
----------	-------	--	--------	------

Radiation and Imaging Sciences**HEALTH SCIENCES, EDUCATION & WELLNESS INSTITUTE**

The Bachelor of Applied Science degree (BAS) in radiation and imaging sciences is a career oriented bachelor degree completion program for those with national certification in radiologic technology, diagnostic ultrasound, radiation therapy, or nuclear medicine. The degree offers a professionally relevant curriculum, designed to prepare radiation and imaging professionals to successfully compete for positions that require advance technical certifications or supervisory and management skills.

DOSM 403 Clinical Education III • 8 CR

Prerequisite: Acceptance into the program. *Fee:* \$23.50 malpractice insurance and \$150 equipment

2755 A	Schoenfeld/Armstrong	arranged	HOSP
--------	----------------------	----------	------

DOSM 442 Brachytherapy for Medical Dosimetrists • 4 CR

Prerequisite: Acceptance into the program or permission of instructor.

2762	HYA staff	M	6:00p-9:00p	B254
------	-----------	---	-------------	------

Section HYA is a hybrid class. On campus sessions meet on the day listed. The balance of instruction occurs online as directed by the course syllabus.

DOSM 443 Quality Assurance for Medical Dosimetry • 3 CR

Prerequisite: Acceptance into the program or permission of instructor.

2770 OAS	Wexler A		online	A242
----------	----------	--	--------	------

DOSM 475 Concept Integration and Case Studies • 3 CR

Prerequisite: Acceptance into the program or permission of instructor.

2778	HYA Daniels M	W	6:00p-9:00p	B254
------	---------------	---	-------------	------

Section HYA is a hybrid class. On campus sessions meet on the day listed. The balance of instruction occurs online as directed by the course syllabus.

RAIM 301 Essentials of Imaging & Therapy • 5 CR

Prerequisite: Acceptance into the program or permission of instructor.

2793 OAS	Radvilas M		online	A242
----------	------------	--	--------	------

RAIM 475 Capstone Project • 5 CR

Prerequisite: Acceptance into the program or permission of instructor.

2800	HYA Radvilas M		arranged	
------	----------------	--	----------	--

Section HYA is a hybrid class. On campus & online sessions meet as directed by the course syllabus.

RAIT 327 Breast Ultrasound for Mammographers • 3 CR

Prerequisite: Acceptance into the program or permission of instructor.

2852 A	Hatcher T	T	6:00p-9:00p	B252
--------	-----------	---	-------------	------

RAIT 328 Ultrasound Equipment for Mammographers • 2 CR

Prerequisite: Acceptance into the program or permission of instructor.

2857 A	Hatcher T	Th	5:30p-7:30p	A250
--------	-----------	----	-------------	------

RAIT 490 Information & Imaging Management • 3 CR

Prerequisite: Acceptance into the program or permission of instructor.

2885 OAS	Rinehart J		online	A242
----------	------------	--	--------	------

Radiation Therapy**HEALTH SCIENCES, EDUCATION & WELLNESS INSTITUTE****RADON 114 Clinical Practice IV • 12 CR**

Prerequisite: Acceptance into the program.

2600 A	Betageri M	daily	8:00a-4:30p	HOS
2610 B	Schinman L	daily	8:00a-4:30p	HOS

RADON 214 Clinical Practice VIII • 12 CR

Prerequisite: Acceptance into the program.

2620 A	Betageri M	daily	8:00a-4:30p	HOS
2640 B	Schinman L	daily	8:00a-4:30p	HOS

Radiologic Technology**HEALTH SCIENCES, EDUCATION & WELLNESS INSTITUTE****RATEC 101 Introduction to Radiologic Technology • 1 CR**

Prerequisite: Acceptance into the program or permission of instructor.

2650 LSA	Miller K	MTWTh	9:00a-11:50a	B102
----------	----------	-------	--------------	------

Section LSA is a late start class that meets 7/21 - 7/24.

RATEC 107 Positioning & Related Anatomy I • 2 CR

Prerequisite: Acceptance into the program or permission of instructor.

2660 LSA	Zupan/Beumont MT		8:30a-10:00a	B102
	also meets	M	10:00a-1:00p	B241/B254
2670 LSB	Zupan/Beumont MT		8:30a-10:00a	B102
	also meets	T	10:00a-1:00p	B241/B254

Section LSA & LSB are late start classes that meet 7/28-8/26.

RATEC 110 Clinical Education I • 3 CR

Prerequisite: Acceptance into the program or permission of instructor.

Fee: \$23.50 malpractice insurance.

2680 LSA	Zupan/Burnham/Miller	arranged	HOS
2690 LSB	Rigby/Engler	arranged	HOS

Section LSA & LSB are late start classes that meet 9/1 - 9/12 as directed by the course syllabus.

RATEC 120 Basic Patient Care Procedures • 2 CR

Prerequisite: Acceptance into the program or permission of instructor.

2700 LSA	Zupan S	WTh	8:30a-10:00a	B102
	also meets	W	10:00a-1:00p	B254
2710 LSB	Zupan S	WTh	8:30a-10:00a	B102
	also meets	Th	10:00a-1:00p	B254

Section LSA & LSB are late start classes that meet 7/30-8/28.

RATEC 210 Clinical Education V • 13 CR

Prerequisite: Acceptance into the program or permission of instructor. *Fee:* \$23.50 Malpractice insurance.

2720 A	Zupan/Burnham	arranged	HOS
2730 B	Miller/Rigby/Engler	arranged	HOS

Section A & B classes meet 6/30-9/12 as directed by the course syllabus.

Sociology**SOCIAL SCIENCE DIVISION****SOC& 101 Introduction to Sociology • 5 CR**

5520 A	staff	MTWTh	7:30a-9:20a	C164
5521 B	staff	MTWTh	9:30a-11:20a	C164
5523 C	staff	MTWTh	11:30a-1:20p	C164
5524 D	staff	MTWTh	11:30a-1:20p	D103
5525 E	staff	MW	6:00p-9:45p	C164
5526 OAS	staff		online	D110
5527 OBS	staff		online	D110
5528 OCS	staff		online	D110
5529 ODS	staff		online	D110

SOC& 201	Social Problems • 5 CR			
5540 OAS	staff	online		D110
SOC 240	Identity, Self & Social Interaction • 5 CR			
5559 OAS	staff	online		D110
SOC 255	Dating, Relationships, and Families • 5 CR			
5568 OAS	staff	online		D110

Theatre Arts

ARTS & HUMANITIES DIVISION

DANCE

DANCE 130	Jazz Technique I • 2 CR			
May be repeated for a maximum of 6 credits. <i>Fee:</i> \$3.50 towel.				
0901 A	Platt B	TWTh	1:30p-3:20p	R014
DANCE 131	Jazz Technique II • 2 CR			
May be repeated for a maximum of 4 credits. <i>Prerequisite:</i> DANCE 130 or equivalent or permission of instructor. <i>Fee:</i> \$3.50 towel.				
0904 A	Platt B	TWTh	1:30p-3:20p	R014
DANCE 140	Ballet Technique I • 2 CR			
May be repeated for a maximum of 6 credits. <i>Fee:</i> \$3.50 towel.				
0907 A	Platt B	TWTh	11:30a-1:20p	R014
DANCE 141	Ballet Technique II • 2 CR			
<i>Prerequisite:</i> DANCE 140 or equivalent. <i>Fee:</i> \$3.50 towel.				
0910 A	Platt B	TWTh	11:30a-1:20p	R014

DRAMA

DRMA& 101	Introduction to the Theatre • 5 CR			
0921 OAS	staff	online		R230
DRMA 284	Musical Theatre Performance I • 5 CR			
May be repeated for a maximum of 30 credits. <i>Prerequisite:</i> Permission of instructor. <i>Fee:</i> \$60.				
0928 A	Doyle T	daily	12:00p-5:00p	E200
DRMA 285	Musical Theatre Performance II • V 1-5 CR			
May be repeated for a maximum of 30 credits. <i>Prerequisite:</i> Permission of instructor. <i>Fee:</i> \$60.				
0932 A	Doyle T	daily	12:00p-5:00p	E200
DRMA 290	Technical Practice • 1 CR			
0936 A	staff	arranged		E121

Translation & Interpretation

CONTINUING EDUCATION

This program is self-supporting and is not eligible for tuition waivers. Please refer to the Continuing Education schedule for a complete listing of credit and non-credit Translation & Interpretation classes offered this quarter. For program information and to complete the first step towards acceptance into the program, please register for one of our Free Information Sessions by calling (425) 564-2263 and requesting 6:00-8:00 p.m. Tuesday, 4/22 (item #GCOHA), or 6/3 (item #GCOHB).

TRANS 101	Introduction to Translation and Interpreting • 3 CR			
<i>Prerequisite:</i> Acceptance into program & bilingual proficiency. <i>Fee:</i> \$395.				
6750 A	Cohen/Walsh W	6:00p-9:00p		R101
Class meets 7/2-9/3.				

TRANS 103	Fundamentals of Translation • 3 CR			
<i>Prerequisite:</i> Acceptance into program & bilingual proficiency. <i>Fee:</i> \$395.				
6751 NCA	Zervaki T	T	6:00p-9:00p	TBA
Section NCA meets 7/1-9/2 at North Campus, 14673 NE 29th Place.				

TRANS 104	Technology for Translators & Interpreters • 3 CR			
<i>Prerequisite:</i> Acceptance into program & bilingual proficiency. <i>Fee:</i> \$395.				
6752 HYA	Lucero J	Th	6:00p-9:00p	TBA
Section HYA is a hybrid class that meets 7/3-9/4. The first session meets at North Campus, 14673 NE 29th Place. The balance of instruction occurs online or at North Campus as directed by the course syllabus.				

Travel Study Abroad

ARTS & HUMANITIES DIVISION

BC's Travel Study Abroad Program allows you to immerse yourself in the richness of another culture while earning college credit. Classes include visits to museums, historical landmarks, local events, and much more. Check out BC's Travel Study Abroad at www.bellevuecollege.edu/studyabroad/, pick up a brochure in room R230, or contact coordinator Ivan Breen at ibreen@bellevuecollege.edu or (425) 564-3147.

Upcoming Programs:

- Japan, Fall 2014
- London, Fall 2014
- Australia/New Zealand, Winter 2015
- Florence, Spring 2015
- Barcelona, Fall 2015

Workforce Education

WORKFORCE DEVELOPMENT

BASIC FOOD EMPLOYMENT & TRAINING (BFET)

Room B131, 425-564-2174
www.bellevuecollege.edu/we/bfet

Offers tuition and book assistance. A student must be receiving Basic Food Benefits (Food Stamps). Low income students will receive assistance in applying for Basic Food Benefits.

THE OPPORTUNITY GRANT

Room B131, 425-564-4045
www.bellevuecollege.edu/we/og

Offers up to 45 credits' worth of tuition and book funding plus advising for limited income adults seeking professional/technical certificates or degrees. To be eligible for the Opportunity Grant, a student must:

- Be able to be admitted to the college as a resident
- Be a low income adult
- Have little or no previous college credits
- Pursue approved professional or technical programs

WORKFIRST

Room B131, 425-564-2714
www.bellevuecollege.edu/workfirst

Tuition and book assistance to parent's receiving TANF (cash assistance) from DSHS. Assistance is offered for approved professional/technical programs as well as ESL, Adult Basic Education, GED classes and I-BEST classes.

WORKER RETRAINING

Room N211, 425-564-2036
www.bellevuecollege.edu/we/wrp

Tuition assistance, priority registration, and educational planning for those who are currently collecting unemployment or have exhausted those benefits in the past two years, for displaced homemakers, or those who were self-employed in a declining industry.

World Languages

ARTS & HUMANITIES DIVISION

AMERICAN SIGN LANGUAGE

ASL& 121	American Sign Language I • 5 CR			
1400 A	Aron B	MTWTh	9:30a-11:20a	N206
ASL& 123	American Sign Language III • 5 CR			
<i>Prerequisite:</i> ASL& 122.				
1403 A	Quiroga J	MW	6:00p-9:45p	R201
ASL& 222	American Sign Language V • 5 CR			
<i>Prerequisite:</i> ASL& 221 with a C- or better or permission of instructor.				
1406 A	Aron B	MTWTh	11:30a-1:20p	N206
ASL& 223	American Sign Language VI • 5 CR			
<i>Prerequisite:</i> ASL& 222 with a C- or better or permission of instructor.				
1407 A	Aron B	MTWTh	11:30a-1:20p	N206

CHINESE

CHIN& 121	Chinese I • 5 CR			
1410 OAS	Ye Y	online		R230

FRENCH

FRCH& 121	French I • 5 CR			
<i>Fee:</i> \$21.50 lab.				
1413 A	Miller I	MTWTh	9:30a-11:20a	D259

JAPANESE

JAPN& 121	Japanese I • 5 CR			
<i>Fee:</i> \$21.50 lab.				
1416 A	Hardt P	MTWTh	9:30a-11:20a	A243
JAPN& 123	Japanese III • 5 CR			
<i>Prerequisite:</i> JAPN& 122 or permission of instructor. <i>Fee:</i> \$21.50 lab.				
1419 A	Hardt P	MTWTh	11:30a-1:20p	A243

SPANISH

SPAN& 121	Spanish I • 5 CR			
<i>Fee:</i> \$21.50 lab.				
1422 A	Villanueva J	MTWTh	9:30a-11:20a	D274A
1423 OAS	Massie M	online		R230
SPAN& 122	Spanish II • 5 CR			
<i>Prerequisite:</i> SPAN& 121 or permission of instructor.				
1426 OAS	Fernandez M	online		R230
SPAN& 123	Spanish III • 5 CR			
<i>Prerequisite:</i> SPAN& 122 or permission of instructor.				
1429 OAS	Alwar A	online		R230



Distance Education is Becoming eLearning!

We're rolling out a new name for our online class program. BC has offered Distance Education classes for several decades – since before the Internet! Our new name reflects the learning methods used today.

How to Get Started in Distance Ed/eLearning Classes

- 1. Apply for admission:** If you are new to BC – at www.bellevuecollege.edu/enrollment/admissions/apply/credit/ or see page 4 for in-person instructions.
- 2. Register in person or online:** www.bellevuecollege.edu/enrollment/registration/register/
You will see several code numbers in class descriptions:
 - **O** stands for Online
 - **A, B, or C** are section designators when there are multiple offerings of the same class.
 - **S** stands for state support.
 - For example, an OAS class is an Online class, section A, and State supported.
- 3. Pay fees:**
 - A \$52.50 Distance Ed/eLearning fee is added to the per-class cost for all classes. This fee covers hardware, software and licensing and maintenance fees for the online resources.
 - Additional course fees vary in Distance Ed/eLearning due to the wide variety of types of classes (such as those with a science lab), methods of distribution, costs of programming, and residency status.
 - If you are a US citizen/permanent resident requesting the online tuition discount, you must contact the Registrar's Office each quarter to have your tuition adjusted after registering for classes. Phone (425) 564-2222.
 - Check the website for details: www.bellevuecollege.edu/distance/tuition/
- 4. Buy your textbooks:** Online from the BC Bookstore at bcc.collegestoreonline.com. Check the website for days and hours or call (425) 564-2285.
- 5. Log in to Canvas:** www.bellevuecollege.edu/distance/classroom.asp

Accounting

ACCT 135 **Business Payroll Tax Accounting** • 3 CR

Accounting – Transfer

ACCT& 201 **Principles of Accounting I** • 5 CR

ACCT& 202 **Principles of Accounting II** • 5 CR

ACCT& 203 **Principles of Accounting III** • 5 CR

Alcohol & Drug Counseling

Permission of Director

HSSA& 101 **Introduction to Addictive Drugs** • 3 CR

ALDAC 102 **Chemical Dependency Pharm of Alcohol and Drugs** • 3 CR

ALDAC 103 **Introduction to Counseling Helping Profession** • 3 CR

Anthropology

ANTH& 100 **Survey of Anthropology** • 5 CR

ANTH 180 **American Life & Culture** • 5 CR

ANTH& 204 **Archaeology** • 5 CR

ANTH& 205 **Biological Anthropology** • 5 CR

ANTH& 206 **Cultural Anthropology** • 5 CR

ANTH 208 **Language, Culture and Society** • 5 CR

Astronomy

ASTR& 101 **Introduction to Astronomy** • 6 CR

Biology

BIOL& 100 **Survey of Biology** • 6 CR

BIOL 108 **Human Biology** • 6 CR

Business Administration – Transfer

BA 240 **Statistical Analysis** • 5 CR

BUS& 201 **Business Law** • 5 CR

Business Intelligence

BUSIT 103 **SQL Fundamentals** • 5 CR

Business Management

BUS& 101 **Introduction to Business** • 5 CR

BUS 120 **Organizational Behavior** • 5 CR

BUS 145 **Business Mathematics** • 5 CR

Business Sustainable Practices

BSUST 110 **Communication for Sustainable Business Practices** • 4 CR

BSUST 160 **Sustainable Business Analysis** • 5 CR

Business Technology Systems

BTS 101 **Keyboarding I** • 1 CR

BTS 104 **Keyboarding Review & Speed Building** • 1 CR

BTS 109 **Business Communications** • 5 CR

BTS 144 **Personal Information Manager** • 3 CR

BTS 145 **Introduction to Web Technology** • 1 CR

BTS 147 **Presentation Design & Delivery** • 3 CR

BTS 161 **Business Software Essentials** • 5 CR

BTS 165 **Business Spreadsheet Analysis & Design** • 5 CR

BTS 168 **Business Data Management Tools** • 5 CR

BTS 210 **Collaborative Online Workspace** • 5 CR

BTS 265 **Advanced Business Spreadsheet Analysis & Design** • 5 CR

BTS 280 **Project Planning Tracking and Reporting** • 5 CR

Cultural & Ethnic Studies

CES 100 **Race in the United States** • 5 CR

CES 102 **Introduction to American Culture** • 2 CR

CES 180 **American Life & Culture** • 5 CR

CES 201 **Sports and Culture** • 5 CR

Chemistry

CHEM& 110 **Chemical Concepts w/ Lab** • 6 CR

Criminal Justice

CJ& 101 **Introduction to CRiminal Justice** • 5 CR

CJ& 112 **Introduction to CRiminology** • 5 CR

Communication Studies

CMST& 102 **Introduction to Mass Media** • 5 CR

CMST 132 **Techniques & Technology of Propaganda** • 5 CR

CMST 202 **Survey of Speech Communication** • 5 CR

CMST& 210 **Interpersonal Communication** • 5 CR

CMST 216 **Scripting for Film Video & Multimedia** • 5 CR

CMST& 230 **Small Group Communication** • 5 CR

CMST 250 **Organizational Communication** • 5 CR

CMST 280 **Intercultural Communication** • 5 CR

Computer Science

CS 101 **Technology & Computer Science** • 5 CR

CS 210 **Fundamentals of Computer Science I** • 5 CR

CS 211 **Fundamentals of Computer Science II** • 5 CR

CS 250 **Management Information Systems** • 5 CR

Database Administration

DBA 130 **Database Theory** • 5 CR

Digital Media

DMA 290 **Portfolio Presentation and Review** • 1 CR

DMA 292 **Internship in Digital Media Arts** • 5 CR

Early Learning & Teacher Education

- ECED& 100 **Child Care Basics** • 3 CR
 ECED& 107 **Health, Safety, and Nutrition** • 5 CR
 ECED& 190 **Observation and Assessment** • 3 CR

Economics

- ECON 100 **Introduction to Basic Economic Principles** • 5 CR
 ECON& 201 **Microeconomics** • 5 CR
 ECON& 202 **Macroeconomics** • 5 CR

Education

- EDUC& 115 **Child Development** • 5 CR

English

- ENGL 092 **Developmental English** • 5 CR
 ENGL 093 **Composition for Non-Native Speakers** • 5 CR
 ENGL& 101 **English Composition I** • 5 CR
 ENGL& 111 **Introduction to Literature I** • 5 CR
 ENGL 201 **The Research Paper** • 5 CR
 ENGL 223 **Children's Literature** • 5 CR
 ENGL& 235 **Technical Writing** • 5 CR
 ENGL 247 **Writing Poetry I** • 5 CR
 ENGL 248 **Writing Poetry II** • 5 CR
 ENGL 249 **Writing Poetry III** • 5 CR
 ENGL 253 **Writing Creative Non-fiction I** • 5 CR
 ENGL 254 **Writing Creative Non-fiction II** • 5 CR
 ENGL 255 **Writing Creative Non-fiction III** • 5 CR
 ENGL 271 **Expository Writing I** • 5 CR
 ENGL 272 **Expository Writing II** • 5 CR

Environmental Science

- ENVS& 100 **Survey of Environmental Science** • 5 CR

Geography

- GEOG& 100 **Introduction to Geography** • 5 CR
 GEOG 106 **Introduction to Natural Hazards & Disasters** • 5 CR
 GEOG 123 **Introduction to Globalization** • 5 CR
 GEOG 205 **Weather Climate Vegetation Soils** • 5 CR

Geology

- GEOL 106 **Introduction to Natural Hazards & Disasters** • 5 CR

Health Technology Management

Permission of Program Manager

- HCTM 150 **Healthcare Technology Environment and Security** • 5 CR
 HCTM 175 **HIT Systems Life Cycle Management** • 5 CR
 HCTM 375 **HIT Project Management** • 5 CR

History

- HIST 101 **History of Civilization Cultural Traditions** • 5 CR
 HIST 102 **History of Civilization Middle Ages** • 5 CR
 HIST 103 **History of Civilization Contemporary World** • 5 CR
 HIST& 146 **US History I** • 5 CR
 HIST& 147 **US History II** • 5 CR
 HIST& 148 **US History III** • 5 CR

Human Development

- HD 110 **Stress Management** • 3 CR
 HD 125 **Motivation and Empowerment** • 3 CR

Information Technology

- IT 101 **Introduction to Information Technology** • 5 CR
 IT 128 **Information Security Essentials** • 5 CR

International Studies

- INTST 280 **History of Africa** • 5 CR

Marketing

- MKTG 154 **Principles of Marketing** • 5 CR

Mathematics

- MATH 099 **Intermediate Algebra** • 5 CR
 MATH 130 **Introduction to Statistics** • 5 CR
 MATH 138 **College Algebra for Business & Social Science** • 5 CR
 MATH& 141 **Precalculus I** • 5 CR
 MATH& 142 **Precalculus II** • 5 CR
 MATH& 148 **Business Calculus** • 5 CR

Meteorology

- METR 101 **Introduction to the Weather** • 5 CR

Music

- MUSC& 105 **Music Appreciation** • 5 CR
 MUSC 107 **Fundamentals of Music** • 5 CR
 MUSC 116 **History of Rock & Roll** • 5 CR
 MUSC 117 **Music of the World** • 5 CR

Network Services & Computing Systems

- NSCOM 223 **Managing a Network Environment** • 5 CR

Nuclear Medicine Technology

Select Admission Program

- NMTEC 250 **Sectional Anatomy for Nuclear Medicine** • 3 CR

Nutrition

- NUTR 100 **Personal Nutrition** • 5 CR
 NUTR& 101 **Nutrition** • 5 CR

Oceanography

- OCEA& 101 **Introduction to Oceanography w/ Lab** • 6 CR

Philosophy

- PHIL 102 **Contemporary Moral Problems** • 5 CR
 PHIL& 115 **Critical Thinking** • 5 CR
 PHIL 265 **Biomedical Ethics** • 5 CR

Political Science

- POLS& 101 **Introduction to Political Science** • 5 CR
 POLS 125 **Introduction to Political Psychology** • 5 CR
 POLS& 202 **American Government** • 5 CR
 POLS& 203 **International Relations** • 5 CR
 POLS 204 **Introduction to Comparative Politics** • 5 CR

Psychology

- PSYC& 100 **General Psychology** • 5 CR
 PSYC& 200 **Lifespan Psychology** • 5 CR
 PSYC 205 **Theories of Personality** • 5 CR
 PSYC 210 **Psychology of Human Sexuality** • 5 CR
 PSYC& 220 **Abnormal Psychology** • 5 CR
 PSYC 240 **Social Psychology** • 5 CR

Radiation & Imaging Sciences

- DOSM 443 **Quality Assurance for Medical Dosimetry** • 3 CR
 RAIT 490 **Information & Imaging Management** • 3 CR

Sociology

- SOC& 101 **Introduction to Sociology** • 5 CR
 SOC& 201 **Social Problems** • 5 CR
 SOC 240 **Identity, Self and Social Interaction** • 5 CR
 SOC 255 **Dating, Relationships, and Families** • 5 CR

Theatre Arts

- DRMA& 101 **Introduction to the Theatre** • 5 CR

World Languages

- CHIN& 121 **Chinese I** • 5 CR
 SPAN& 121 **Spanish I** • 5 CR
 SPAN& 122 **Spanish II** • 5 CR
 SPAN& 123 **Spanish III** • 5 CR

Added Fee for DE classes

A \$52.50 fee is added to the per class cost for each Distance Ed/eLearning class which pays for hardware, software, and licensing.

Questions? Call (425) 564-2438 or visit www.bellevuecollege.edu/distance/tuition

Hybrid Classes: On Campus & Online

Hybrid courses combine campus classroom sessions and online, giving you the best of both worlds. The combination makes it so that you can come to campus less often, but still have face-to-face classroom interaction with your faculty and fellow students. See department listings (pages 9-21) for more details.

Accounting

- ACCT 101 **Practical Accounting I** • 5 CR
ACCT 272 **QuickBooks Certification** • 2 CR

Anthropology

- ANTH& 100 **Survey of Anthropology** • 5 CR

Biology

- BIOL& 160 **General Biology w/Lab** • 6 CR

Business Administration – Transfer

- BA 240 **Statistical Analysis** • 5 CR

Business Management

- BUS 120 **Organizational Behavior** • 5 CR

Business Technology Systems

- BTS 161 **Business Software Essentials** • 5 CR
BTS 165 **Business Spreadsheet Analysis & Design** • 5 CR

Digital Media Arts

- DMA 100 **Portfolio and Employment I** • 2 CR
DMA 102 **Digital Design and Storytelling** • 5 CR
DMA 103 **Graphic Design Fundamentals** • 5 CR

English

- ENGL 092 **Developmental English** • 5 CR
ENGL& 101 **English Composition I** • 5 CR
ENGL 201 **The Research Paper** • 5 CR
ENGL& 235 **Technical Writing** • 5 CR

Geography

- GEOG 106 **Introduction to Natural Hazards & Disasters** • 5 CR
GEOG& 100 **Introduction to Geography** • 5 CR

Geology

- GEOL 106 **Introduction to Natural Hazards & Disasters** • 5 CR

Human Development

- HD 103 **International Student First Year Experience** • 2 CR

Marketing Management

- MKTG 154 **Principles of Marketing** • 5 CR

Network Services & Computing Systems

- NSCOM 294 **Special Topics-Network Services/Computing System** • 2 CR

Nursing

Select Admission Program

- NURS 401 **Nursing Leadership** • 3 CR
NURS 412 **Community and Public Health Nursing Clinical II** • 2 CR
NURS 450 **Nursing Health Information Technology** • 3 CR

Psychology

- PSYC& 100 **General Psychology** • 5 CR

Radiation & Imaging Sciences

- DOSM 442 **Brachytherapy for Medical Dosimetrists** • 4 CR
DOSM 475 **Concept Integration & Case Studies** • 3 CR
RAIM 475 **Capstone Project** • 5 CR

Translation & Interpretation

- TRANS 104 **Technology for Translators & Interpreters** • 3 CR

Evenings Classes

Earn credit in the evening at BC. We offer numerous classes between 5:30 – 10:00 pm (Mon – Thurs). Look for the shaded items in the department listings (pages 9-21) for more details. Visit www.bellevuecollege.edu/courses/options/ for more information.

Accounting – Transfer

- ACCT& 201 **Principles of Accounting I** • 5 CR
ACCT& 202 **Principles of Accounting II** • 5 CR

Alcohol & Drug Counseling

Permission of Director

- HSSA& 101 **Introduction to Addictive Drugs** • 3 CR
ALDAC 105 **Chemical Dependency Client & Family Education** • 3 CR
ALDAC 206 **Chemical Dependency Group Counseling** • 3 CR
ALDAC 225 **Chemical Dependency Ethics & Laws** • 3 CR

Biology

- BIOL& 160 **General Biology w/Lab** • 6 CR
BIOL& 241 **Human Anatomy & Physiology I** • 6 CR

Business Administration – Transfer

- BA 240 **Statistical Analysis** • 5 CR

Business Management

- BUS 120 **Organizational Behavior** • 5 CR
BUS& 201 **Business Law** • 5 CR

Business Technology Systems

- BTS 161 **Business Software Essentials** • 5 CR
BTS 165 **Business Spreadsheet Analysis & Design** • 5 CR

Chemistry

- CHEM& 121 **Introduction to Chemistry** • 6 CR
CHEM& 131 **Introduction to Organic/Biochemistry** • 6 CR
CHEM& 162 **General Chemistry II** • 6 CR
CHEM& 163 **General Chemistry III** • 6 CR
CHEM& 261 **Organic Chemistry I** • 6 CR
CHEM& 263 **Organic Chemistry III** • 6 CR

Communication Studies

- CMST& 220 **Public Speaking** • 5 CR

Digital Media Arts

- DMA 104 **Motion Graphic Fundamentals** • 5 CR
DMA 106 **Animation and Game Design Fundamentals** • 5 CR
DMA 297 **Special Topics in Digital Media Arts** • 5 CR

English

- ENGL 092 **Developmental English** • 5 CR
ENGL 093 **Composition for Non-Native Speakers** • 5 CR
ENGL& 101 **English Composition I** • 5 CR
ENGL 201 **The Research Paper** • 5 CR
ENGL& 235 **Technical Writing** • 5 CR

Experiential Learning

- EXPRL 220 **Resume & Interviewing Strategies** • 2 CR

Geography

- GEOG& 100 **Introduction to Geography** • 5 CR

Interior Design

- INDES 169 **Sketch Up** • 2 CR
INDES 360 **Introduction to Rhinoceros 3-D** • 5 CR

Mathematics

- MATH 097 **Introductory Algebra I** • 5 CR
MATH 098 **Introductory Algebra II** • 5 CR
MATH 099 **Intermediate Algebra** • 5 CR
MATH 138 **College Algebra for Business & Social Science** • 5 CR
MATH& 141 **Precalculus I** • 5 CR
MATH& 142 **Precalculus II** • 5 CR
MATH& 148 **Business Calculus** • 5 CR

Network Services & Computing Systems

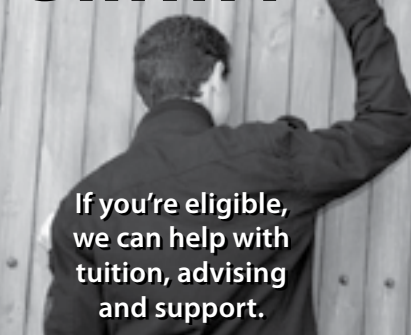
- NSCOM 294 **Special Topics-Network Services/Computing System** • 2 CR

Physics

- PHYS& 116 **General Physics III** • 6 CR
PHYS 122 **General Engineering Physics II** • 6 CR
PHYS 123 **General Engineering Physics III** • 6 CR

PsychologyPSYC& 100 **General Psychology • 5 CR****Radiation & Imaging Sciences**DOSM 442 **Brachytherapy for Medical Dosimetrists • 4 CR**DOSM 475 **Concept Integration and Case Studies • 3 CR**RAIM 475 **Capstone Project • 5 CR**RAIT 327 **Breast Ultrasound for Mammographers • 3 CR**RAIT 328 **Ultrasound Equipment for Mammographers • 2 CR****World Languages**ASL& 123 **American Sign Language III • 5 CR****Late-Start Classes**

Earn credit in a shorter amount of time than a standard credit class. Late-Start classes are offered in a more intense seven-week format and conclude the same week as regular 10-week credit courses. Look for courses labeled "LSA" in the department listings (pages 9-21) for details about days, times, rooms, instructors, prerequisites, etc. Visit www.bellevuecollege.edu/courses/options/ for more information.

Alcohol and Drug Counseling*Permission of Director*ALDAC 204 **Chemical Dependency: Adolescent Assessment & Treatment • 2 CR****Human Development**HD 101 **Healthy Self-Esteem • 2 CR**HD 120 **Learning Strategies for Student Success • 2 CR**HD 131 **Understanding Personal Relationships • 2 CR****Nuclear Medicine Technology***Select Admission Program*NMTEC 232 **Clinical Education III • 12 CR****Physical Education**PE 115 **Hiking & Orienteering • 1 CR****Radiologic Technology***Select Admission Program*RATEC 101 **Introduction to Radiologic Technology • 1 CR**RATEC 107 **Positioning & Related Anatomy I • 2 CR**RATEC 110 **Clinical Education I • 3 CR**RATEC 120 **Basic Patient Care • 2 CR****OPPORTUNITY GRANT**

If you're eligible,
we can help with
tuition, advising
and support.

Basic Eligibility:

- ✓ Low income adult*
- ✓ WA resident
- ✓ Little or no previous college credits
- ✓ Pursuing approved professional or technical program*

Interested?**Info Session: Thurs 2:30-4:00pm****Call (425) 564-4054 or visit:****www.bellevuecollege.edu/we/og****Workforce Education • Room B131****Get on the...**

► Are you currently
enrolled in an
IT Program?

► Exploring a high-wage,
high-demand career in IT?



**Enroll in BC's
Fast Track to IT Program!**

For more information, contact:**T.J. Bajwa • (425) 564-3335****tejinder.bajwa@bellevuecollege.edu**

Open to individuals seeking short term training and job placement assistance. Students enrolled in the following BC IT programs qualify:
Database • Business Information Technology • Mobile & Cloud Technologies • Network Services & Computing Systems



This workforce solution was funded by a grant awarded by the U.S. Department of Labor's Employment and Training Administration. The solution was created by the grantee and does not necessarily reflect the official position of the U.S. Department of Labor. The Department of Labor makes no guarantees, warranties, or assurances of any kind, express or implied, with respect to such information, including any information on linked sites and including, but not limited to, accuracy of the information or its completeness, timeliness, usefulness, adequacy, continued availability or ownership. Bellevue College does not discriminate on the basis of race or ethnicity; creed; color; national origin; sex; marital status; sexual orientation; age; religion; genetic information; the presence of any sensory, mental, or physical disability; gender identity or veteran status in educational programs and activities which it operates. Please visit www.bellevuecollege.edu/equal/.

Get ready to start your career!

BC offers a diverse selection of degree options* including:

- » Transfer Degrees
- » Associate in Arts Degrees
- » Professional/Technical Degrees & Certificates
- » Bachelor's Degrees
(see back cover)



TRANSFER DEGREES

90 Credits

- Associate in Arts and Sciences – DTA
- Associate in Business – DTA/MRP
- Associate in Math Education – DTA/MRP
- Associate in Science: Track 1 – MRP
 - Biological, Environmental, Chemistry, Earth Science
- Associate in Science: Track 2 – MRP
 - Physics, Atmospheric, Engineering
 - Chemical, Bio Engineering
 - Electrical, Computer Engineering
 - Civil, Mechanical, Other Engineering

ASSOCIATE IN ARTS DEGREES

90 Credits or More

- Accounting AAS
- Accounting AAS-T
- Allied Health
- Business Management AAS
- Business Management AAS-T
- Business Technology
- Criminal Justice-AAS-T
- Diagnostic Ultrasound Technology*
- Digital Media Arts
- Early Childhood Education
- Early Childhood Education AAS-T
- Electroneurodiagnostic Technologist*
- Information Systems AAS-T
- Interior Studies
- Marketing Management
- Molecular Sciences Technician
- Movie Making
- Networking Services & Computing Systems
- Nuclear Medicine Technology*
- Nursing AAS-T*
- Occupational and Life Skills
- Radiation Therapy*
- Radiologic Technology*
- Sustainable Business Practices

*Selective admissions to program.

CERTIFICATES OF ACHIEVEMENT

45 Credits

- Accounting Assistant
- Administrative Assistant
- Advanced Business Software Specialist
- Advanced Video Production
- Alcohol & Drug Counseling
- Application & Desktop Support Specialist
- Business Intelligence Developer
- Cisco Support Technician
- Database Report Developer
- Early Childhood Education
- Health Unit Coordinator
- Human Resources Assistant
- Introductory .NET Programming
- Microcomputer Support Specialist
- Microsoft Network Support
- Operating Systems Support Specialist
- Programming for Mobile & Web Development
- Programming for Web Development
- Retail Management
- Sales and Marketing
- Sustainability Coordinator
- Web Marketing Specialist

CERTIFICATES OF ACCOMPLISHMENT

44 Credits or Less

- Accounting Information Systems
- Bookkeeping
- Business Intelligence Analyst
- Business Software Specialist
- Clinical Lab Assistant
- CT Imaging
- Database Administration Assistant
- Database Analyst
- Database User Specialist
- Desktop Publishing for Print & Web
- Emergency Department Technician
- Emergency Department Technician Professional
- Entrepreneurship
- Infant & Toddler Care

- Intermediate Applications Developer
- Interpretation
- Introductory C++ Programming
- Magnetic Resonance Imaging
- Medical Office Reception
- Office Assistant
- Phlebotomy Technician
- Financial Data Report Specialist
- Project Management
- Sales & Marketing
- Sustainable Business Accounting
- Sustainable Systems Best Practices
- Translation
- Translation & Interpretation
- Vascular Interventional Program

CERTIFICATES OF COMPLETION

Variable Credits

- Breast Ultrasound
- Cloud Technologies
- eLearning for Educators
- Green/Sustainable Design
- Healthcare Informatics
- Mobile Technologies
- Nursing Assistant-Certified
- Accounting Preparation
- Personal Fitness Trainer
- Sustainability Business Best Practices
- Wilderness Skills

ADDITIONAL BC PROGRAMS:

- General Education Development (GED)
- English as a Second Language
- Adult Basic Education
- High School Summer Enrichment
- High School Running Start
- College in the High School
- Career Education Options (16-20 years)
- Continuing Education (North Campus)

*See www.bellevuecollege.edu/programs/ for most current list of degree options.

Worker Retraining

Out of
Unemployment?

Worker Retraining offers:

- › **FREE Tuition and Fees**
- › Priority Registration
- › Education Planning
- › Coordination with Employment Security to allow participants to attend school and collect Unemployment Insurance

You may be eligible if:

- › You are collecting Unemployment Insurance (UI) or
- › You have exhausted your UI in the past 24 months

You may also be eligible if:

In the past 24 months you:

- › were honorably discharged from the military, or
- › were self-employed but now unemployed as a result of economic factors in your community, or
- › became a displaced homemaker as a result of death or divorce, were dependent on the income of that family member and are unemployed or underemployed



Information Session

Offered every Thursday afternoon

No registration required

For current time and location, see
www.bellevuecollege.edu/we/workshops

For more information:

(425) 564-2036 • TTY Line (425) 564-4110
workforce-ed@bellevuecollege.edu
www.bellevuecollege.edu/we/wrp

Bellevue College does not discriminate on the basis of race or ethnicity; creed; color; national origin; sex; marital status; sexual orientation; age; religion; genetic information; the presence of any sensory, mental, or physical disability; or veteran status in educational programs and activities which it operates. Please visit www.bellevuecollege.edu/equal/.

Your potential *...realized*

- Enhance your credentials.
- Start a new career.
- Begin any time you like.
- Complete at your own pace.
- Flexible, ideal for working people.

Professional Certificates In:

Graphic Design
Web Design
Web Development
Human Resources
C# Programming
Software Test Engineering
Translation and Interpretation
Program Management
Database Administrator
Technical Writing
Business Management

Go to www.bellevuecollege.edu/ce
Or call (425) 564-2263

NORTH CAMPUS: 14673 NE 29th Place, Bellevue WA 98007

***Gain or update
career skills with
certificate programs
at Bellevue College
Continuing Education.***

We also offer courses through our Business Training Institute. If you have a company that needs training (large or small) we offer customized training that will fit your company. gotobcc.com/bti or call 425-564-2892

***Learn today. Use tomorrow.
Become exceptional.***



**BELLEVUE
COLLEGE**
CONTINUING EDUCATION

ON YOUR TURF ON YOUR TIME

COMPLETE YOUR BACHELOR'S
DEGREE AND ADVANCE YOUR
CAREER WITH EWU AT BELLEVUE

» MAJORS

- BA in Business
 - General Business Option
 - Human Resource Management Option
- BA in Interdisciplinary Studies
- BA in Psychology
- BS in Applied Technology

» MINORS

- Business
- Communication Studies
- Psychology
- Sociology



EASTERN
WASHINGTON UNIVERSITY
start something big

ewu.edu/off-campus
425.564.5100

Emergency Closure Information: (425) 401-6680 or www.bellevuecollege.edu/alerts/

Campus Services	Web Address	Room #	Phone #
SSB = Student Services Building, east wing of Bldg. B on the BC main campus.			
Academic Success Center	www.bellevuecollege.edu/asc/	D204	(425) 564-2200
Admissions	www.bellevuecollege.edu/enrollment/admissions/	SSB, 1st floor	(425) 564-2222
Associated Student Government	www.bellevuecollege.edu/stupro/	C212	(425) 564-6150
Bookstore	bcc.collegestoreonline.com	L100	(425) 564-2285
Center for Career Connections & Women's Center	www.bellevuecollege.edu/careers/	SSB, 2nd floor	(425) 564-2279
Cashier	www.bellevuecollege.edu/enrollment/tuition/cashier/	SSB, 1st floor	(425) 564-2309
Childcare & Head Start	www.bellevuecollege.edu/childcare/	Q Bldg.	(425) 564-2240
Counseling Center	depts.bellevuecollege.edu/counseling/	SSB, 2nd floor	(425) 564-2212
Disability Resource Center	www.bellevuecollege.edu/drc/	D126	(425) 564-2498
Distance Education	www.bellevuecollege.edu/distance/	A140	(425) 564-2438
Enrollment & Registrar Services	www.bellevuecollege.edu/enrollment/registration/	SSB, 1st floor	(425) 564-2222
Entry & Academic Advising Services	depts.bellevuecollege.edu/advising/	SSB, 2nd floor	(425) 564-2212
Evaluations/Graduation	www.bellevuecollege.edu/enrollment/graduation/	B125	(425) 564-3106
Financial Aid	fa.bellevuecollege.edu/	SSB, 1st floor	(425) 564-2227
GED Preparation Classes	www.bellevuecollege.edu/deved/ged/	R230	(425) 564-2067
High School Programs	www.bellevuecollege.edu/programs/highschool/	SSB, 2nd floor	(425) 564-2026
International Student Programs	www.bellevuecollege.edu/isp/	House 6	(425) 564-3185
Library Media Center	www.bellevuecollege.edu/lmc/	D126	(425) 564-6161
Multicultural Services & Student Success	depts.bellevuecollege.edu/mcs/	SSB, 2nd floor	(425) 564-2208
Occupational & Life Skills	olsatbellevuecollege.com/	North Campus	(425) 564-2844
Parent Education – Preschool	www.bellevuecollege.edu/parented/	R130	(425) 564-2365
Public Safety/Security	www.bellevuecollege.edu/publicsafety/	K100	(425) 564-2400
Records & Grades	www.bellevuecollege.edu/enrollment/records/	SSB, 1st floor	(425) 564-2222
Tech Prep College Connections	www.techprepcc.org/		(425) 564-2774
Testing Services / GED Testing	www.bellevuecollege.edu/enrollment/assessment/	L100	(425) 564-2243
Transcripts	www.bellevuecollege.edu/enrollment/records/	SSB, 1st floor	(425) 564-2222
TRiO Student Support Services	depts.bellevuecollege.edu/trio/	SSB, 2nd floor	(425) 564-5745
TTY (in Disability Resource Center)			(425) 564-4110
Veteran's Office	fa.bellevuecollege.edu/veterans	SSB, 1st floor	(425) 564-2220
Workforce Education	www.bellevuecollege.edu/we/	B131	(425) 564-4054
Worker Retraining	www.bellevuecollege.edu/we/wrp/	N211	(425) 564-2036
Writing Lab	www.bellevuecollege.edu/asc/writing/	D204	(425) 564-2200

College Credit Instructional Divisions

Arts & Humanities	www.bellevuecollege.edu/artshum/	R230	(425) 564-2341
Institute for Business & Information Technology (IBIT)	www.bellevuecollege.edu/ibit/	A254	(425) 564-2311
Health Sciences, Education & Wellness (HSEWI)	www.bellevuecollege.edu/health/	R130	(425) 564-2012
Science	scidiv.bellevuecollege.edu/	L200	(425) 564-2321
Social Science	www.bellevuecollege.edu/socsci/	D110	(425) 564-2331

Continuing Education

Continuing Education	www.bellevuecollege.edu/ce/	North Campus	(425) 564-2263
Telos (programs for retirees)	www.bellevuecollege.edu/ce/retiree-programs/	North Campus	(425) 564-2263
Business Training Institute	www.bellevuecollege.edu/ce/corporate-group-training/	North Campus	(425) 564-2959

BC NOW OFFERS SIX BACHELOR'S DEGREES



OPPORTUNITY AWAITS OUR BACHELOR'S DEGREE GRADUATES

Grow professionally,
financially and pursue
your educational goals
in programs designed
to accommodate both
individuals new to higher
education and working
professionals.

› A CONVENIENT SOLUTION

Whether you want to complete
your degree close to home on one
campus, or are juggling work and
family obligations, our degree
programs are designed so you
can advance your education and
your career.

› FIND OUT MORE AT:

[www.bellevuecollege.edu/
programs/degrees/bachelor/](http://www.bellevuecollege.edu/programs/degrees/bachelor/)

› **NEW! DATA ANALYTICS (BAS)**

Modern data analytics brings together tools from business, communication, graphic arts, information technology and statistics to collect, mine, interpret and represent large datasets to illustrate concepts and inform decisions. Graduates will be prepared to work as data analysts, data technicians, and in some circumstances, data managers, in a wide range of organization and industries.

› **HEALTHCARE TECHNOLOGY & MANAGEMENT (BAS)**

Designed to prepare individuals to successfully compete for jobs that require knowledge of the healthcare system, information technology knowledge and skills, and supervisory or management skills. There are two degree concentrations: Healthcare Information Technology or Healthcare Management.

› **INFORMATION SYSTEMS & TECHNOLOGY (BAS)**

Graduates of the BAS in IST will have a broad base of theoretical and technical knowledge, as well as specialized knowledge in one of four concentration areas: Application Development, Business Intelligence, Information Security or Systems Administration.

› **INTERIOR DESIGN (BAA)**

Prepares and inspires designers of the future. The BAA program is accredited as a professional level degree by the Council for Interior Design Accreditation (CIDA). The degree offers a combination of core courses, general education and electives.

› **NURSING (RN-BSN)**

Builds upon the academic foundations and experience of the Associate Degree prepared nurse. The RN to BSN program enhances professional values and role development, scholarly inquiry, leadership, communication skills, health information technology and community and public health.

› **RADIATION & IMAGING SCIENCES (BAS)**

Designed to prepare radiation and imaging professionals to successfully compete for jobs that require highly developed technical skills, advanced certifications or supervisory and management skills. The degree completion program is designed for certified professionals in radiologic technology, diagnostic ultrasound, radiation therapy, or nuclear medicine.