

INTRODUCTION TO SOCIOLOGY

SOC& 101 (Section HYL)

Fall 2019

Bellevue College

Instructor: Denise L. Johnson

Email: denise.johnson@bellevuecollege.edu

(when emailing me, please put "SOC 101" as the subject

Office Phone: (425) 564-5143

Office Hours: Daily 10:30am-11:20am

Office Location: A100D

Class Meets: T-Th 12:30-2:20pm

Class Location: C164

COURSE INTRODUCTION

Welcome to our class, "Introduction to Sociology." I look forward to working with you this quarter and sharing with you my fascination with sociology! Hopefully, you enter this class with some degree of curiosity about why human beings behave the way we do. If so, you should find sociology intellectually rewarding as well as illuminating and useful in your own life.

This course is designed as a broad introduction to the field of Sociology. Over the course of the quarter, we will learn the basics of sociology, and we will learn to apply and recognize the basics through the lens of movies. You will learn how to use the "sociological imagination" to see how large institutions affect all of our lives for better or worse. As José Ortega y Gasset said, "Tell me the landscape in which you live, and I will tell you who you are." Indeed, our social environments profoundly influence not only who we think we are, but also how we behave, what we think, and how we perceive others. The overarching goal of this course is to examine and understand this process. We will view movies to deepen our understanding by "seeing" sociology in action.

Sociology is a field that relies on scientific research and evidence, not personal opinion or casual observation. In many cases, the ideas sociology has to offer are difficult to grasp and accept because they challenge many of the taken-for-granted attitudes and opinions that we all tend to operate by in our everyday lives. (Science and research often contradict opinion. As an example, just think about how science challenged the previously held belief that the earth was flat and at the center of the universe!) As we all come to the course with strong ideas and beliefs about the world in which we live, the subject matter may be personally as well as intellectually challenging. Some of what you will learn in this course may initially seem like "common sense." Sometimes what you will learn might be shocking, surprising, or even make you angry. Hopefully, you will learn from each experience and take these lessons with you on your future endeavors.

"The chief object of education is not to learn things but to unlearn things."

–Gilbert Chesterton

"Education is not the filling of a pail but the lighting of a fire."

–William Butler Yeats

Visit our Program's website – there are lots of tips there for students about how to get the most out of your experience at BC, in addition to information about Sociology as a major.

<http://www.bellevuecollege.edu/sociology/>



LEARNING ATMOSPHERE

Research about learning tells us that students learn best when they are actively involved in the teaching and learning process. Thus, this is an *active, interactive* course where you will often *learn by doing*. In other words, this class is *experiential* at times. At times, you will reflect on how the course material relates to your own life. In fact, if you learn to apply the course material to your own life and then share that with others, you are learning! In our class, you will observe the world, read, write, discuss, and participate. I think of our class as a “collaborative learning community” where we all teach and learn from each other. Every time you contribute, you teach something to others. I challenge you to abandon the traditional passive student role and to get involved with teaching and learning – I think you’ll enjoy it and learn a lot in the process!

You should know that class time will NOT be spent regurgitating the reading material. I’ve created a series of short video lectures that you’ll watch *outside of class time*. I’ve also chosen a book that is VERY EASY to understand. For these reasons, we will be spending the bulk of our class time doing things besides lecture – activities, skits, discussions, films, and so on. We don’t have a lot of time each week to spend with each other, so we have to make the most of our class time by applying what we’ve learned from the readings and video lectures that we’ve watched ‘outside’ of class time. Students typically tell me that they really like our class time together, as we get the opportunity to engage in a lot of interesting things.

A note about course content:

Essential to an education is an open-minded understanding of ideas and modes of expression which might conflict with one’s personal values. By being exposed to such ideas or expressions, students are not expected to endorse or adopt them but rather to understand that they are part of the free flow of information upon which higher education depends. To this end, you may find that class requirements may include engaging certain materials which may, in whole or in part, offend you. Since sociologists examine just about every aspect of the social world, we sometimes talk about uncomfortable or provocative material in class. Further, we are watching a wide range of movies throughout the quarter, some of which are R-rated and may contain profanity, sex, and nudity and are intended for mature audiences. (You are required to view these movies; I do not provide alternative assignments.) Please be advised that, when we explore controversial topics, they will be framed within an academic context. You are free to leave the room at any time, but please know that you will be responsible for any course material you may have missed while you were gone. If you have any questions or concerns about course content or climate, don’t hesitate to let me know.

Regarding Safe Space:

This class is a Safe Space for **all** students. Lesbian, gay, bisexual, questioning, queer-identified, and transgender students are welcome in this classroom and encouraged to speak out and be an integral part of this class. Any questions about what this means should be brought to me immediately. All are welcome!

COURSE LEARNING OUTCOMES

After completing the course, the successful student will be able to:

- Critically examine the social landscape in which you live and how life experiences differ according to race, class, gender and sexuality.
- Identify the ways in which cultural and social institutions shape the everyday experiences of individuals, groups and communities.
- Describe fundamental sociological concepts, theories, and theorists, and apply them to real-life situations.

REQUIRED TEXTS AND MISCELLANEOUS PURCHASES

Texts: “Sociology: Exploring the Architecture of Everyday Life” (11th Edition)

COURSE EXPECTATIONS

In order to have a respectful, cooperative learning environment in which we learn as much as possible from one other, we all need to contribute positively to classroom dynamics. Although each class is unique and develops its own 'personality,' the following are the basic expectations that serve as the foundation of our class culture.

The following outlines what we can expect of each other:

Preparation. All of us should come to class prepared. As your professor, my ultimate goal is to help you learn and succeed, so I will spend ample time and effort on class preparation in order to make the material as understandable and as interesting as I possibly can. Class time will only sometimes be lecture – we will have interesting discussions, watch films, and engage in a variety of activities because that helps us all learn more. I am a big believer that learning by doing leads to deep and meaningful levels of understanding.

As students, you should come to class having done the assigned work, and you should always bring the proper supplies with you. Don't neglect the "smaller" assignments, because they count and add up easily, and so they are worth more in the end than they appear. When we all come to class prepared, everyone benefits.

Quality. I will do my best to choose course materials and assignments that are interesting and engaging, and I'll bring my "best self" to the class. I work hard to make this course a success for you, and I expect you to try hard too. When making comments and completing assignments, your comments should indicate that you have read and understand the course material. You should always try to do your personal best. Please don't assume that you can simply "wing it" in this class and still earn a high grade. I have high expectations of you, as I want you to succeed. I know you can succeed, even if you've never gone to college before or if you haven't done well in school! I hope you have high expectations of me as well.

Promptness. I will be to class on time, and I commit to returning your work to you in a timely, reasonable fashion. I will respond to your questions and electronic communications promptly as well. I expect you to come to class on time. When you arrive late, it hurts not only yourself but also your classmates. Often at the beginning of class I make important announcements or discuss crucial material, and when you come in late, not only do you miss it but you also disrupt the class. I certainly understand that sometimes "life happens" and you might miss a bus or have a difficult time getting a parking space, so don't worry if that happens to you (just try to enter the classroom as quietly as possible). But repetitive or habitual lateness is a sign of disrespect to our class, so if you repeatedly come to class late, it will affect the participation portion of your course grade. The same thing goes for repeatedly leaving class early.

As far as your assignments, be sure that you comply with all due dates. I believe that one of the major lessons students take away from college is the importance of meeting deadlines. As a result, **no late work is accepted in this class**. Late work will receive a **zero** grade. Please do not ask me if I will accept your work late...I won't. If you know you are going to be absent on the day something is due, then turn it in early. **Being absent on the day something is due does NOT grant you an automatic extension (even if you were absent on the day it was assigned)**. Major due dates are indicated on the attached Course Calendar, so plan ahead.

A note about religious holidays: If you expect to miss class, exams, or any other assignments as a consequence of your religious observance, you will be provided with a reasonable alternative opportunity to complete the work, as long as you notify me in advance. It is your responsibility to provide me with reasonable notice of the dates of religious holidays on which you will be absent. Alternatively, if you prefer, although I don't require it, you can request an official accommodation from the Student Affairs office if you will be absent from course activities due to religion or conscience (use this [Request Form](#) for the formal request). These formal requests for accommodation must be made within the first two weeks of the course to the office of the Associate Vice President of Student Affairs (see Bellevue College [Policy 2950](#)). In the event you feel you are being discriminated against based on faith or conscience, you may refer to the procedures outlined in the college's Discrimination, Harassment and Retaliation Policy ([1440P](#)).

Engagement. On your end, I need you to be in class and to be engaged because the success of our class depends as much on you as on me. I expect you to actively engage with the course materials, participating and being involved as much as you possibly can. Being in class contributes positively to our classroom

culture (we want to know your contributions!), and it also increases your mastery of the course content. As a result, your presence in class contributes toward your final grade in the course. **For each three (3) class periods that you miss (or arrive late), your final grade will drop one full letter grade.** This means that you are permitted to miss or arrive late to three (3) classes without consequence to your course grade. If you do need to miss class, please note that you will not be able to make up any in-class work that you may have missed (such as group work), and you are also responsible for any and all work that is due at the class meeting immediately upon your return. It is important to know that being absent does not grant you an extension on anything. As a result, I highly recommend that you get the names and contact information of one or two of your classmates so you can contact them for any assignments or notes you may have missed while absent.

While you are in class, I would like you to focus on our class. This means that all electronic devices should be put away, unless I prompt you to use them. If you need a laptop to take notes, or if you need technology for any other reason, I would like for you to talk to me about it. Increasing numbers of students use their laptops during college classes to surf the web, tweet, or post status updates. Texting, excessive talking, or other disruptive behavior is disrespectful to our class, so your participation grade will be affected by these types of behaviors. Please just use common sense and be respectful of our class. Remember that I want you to be physically and mentally present.

When you are speaking, you'll have my undivided attention. I won't make you feel "stupid" or less intelligent for asking a question or making a comment. I will treat you as a multi-dimensional human being with feelings and a unique personal background. You are not a student identification number to me! I also agree to be available to you outside of class should you desire help. I encourage you to come to my office hours whenever you have a question or concern, and I encourage you to advocate for your own needs. If my office hours are not convenient for you, we can schedule an appointment that fits your schedule. However, please be aware that I am not available 24-hours a day, 7 days a week. In general, I am in my office for a couple of hours in the morning (before my classes) and again in the afternoon (when I don't have meetings, which I often do), and I always check my email a few times a day. I do my coursework on the days we have class, during daytime business hours. *Thus, please do not send to me late-night or weekend emails expecting an immediate response.* Thank you in advance for your understanding and consideration. **(NOTE: I will award you 10 extra credit points if you come to my office hours at any time before the end of the quarter.** Maybe we can talk about how you're doing in class, a challenging topic, or your future academic plans. I do this to encourage you to get used to reaching out to your professors – it's really important!)

Honesty and integrity. Your grade will be based upon what I detect that you have learned. It is your job to show me that you understand the material. Your work should be your own, except when asked to work with other students. You are required to acknowledge if you have borrowed any ideas, terms, or phrases, even if you have borrowed from a classmate. Please do not copy and paste material from wikipedia or any other website into your assignments, as this is a severe form of cheating (that is very easy to catch, by the way). **In this class, your assignments should be grounded in the lectures, activities, and readings (rather than web resources, which are often wrong!).** If you have any hesitation, or if you are in doubt about one of these issues, feel free to ask me.

Respect and inclusion. Since learning about diverse experiences is important in this course, it is of the utmost importance that we respect each other's experiences, differences, and opinions. I will do everything within my power to encourage a classroom culture that is free of prejudice and discrimination. I value you.

Everyone in our class has the right to feel welcome here and safe from personal attack, so with this in mind, I expect you to express yourself respectfully. When engaged in your role as a student, please be constructive in your comments. I will be constructive with mine. You may certainly disagree and debate, but you can express your viewpoint in an open, respectful manner. As a sociologist, I know that words do matter (they can hurt a lot!), so please think of other people's feelings before speaking. I cannot allow students to insult or belittle an entire group of people (such as women, men, people of color, gays and lesbians, poor people, Christians, Jews, Muslims, disabled people, veterans, conservatives, liberals, and so on). You are entitled to your beliefs, but you are not entitled to make attacks or victimize others. It is unacceptable to justify bigoted attitudes for any reason, including religion. If you are unable to express your beliefs in a non-insulting manner, please keep them to yourself. I think you'll find, however, that with a little practice, you can express your viewpoint in an open, respectful manner. If you have any doubts, feel free to check with me and I'd be more than happy to help you express yourself responsibly. Hopefully, by the time you finish our class, you will be more

appreciative of and comfortable with human diversity and differences. Our differences are what make us wonderfully unique.

GRADING

Final course grades are based on the following:

| | |
|--|--------------------|
| Weekly quizzes on Newman chapters (9 @ 50 pts each) | 450 points |
| Video lecture notes (11 @ 10 pts each) | 110 points |
| In-class film questionnaires (7 @ 10 points each) | 70 points |
| In-class group discussions on films (7 @ 10 points each) | 70 points |
| Film analysis papers (4 @ 50 points each) | 200 points |
| <u>Participation and homework</u> | <u>100 points</u> |
| TOTAL | 1000 points |

The following are the letter-grade equivalents to the course points:

| Course Grade | Point Total | Course Grade | Point Total |
|--------------|--------------------|--------------|------------------|
| A | = 930-1,000 points | C+ | = 770-799 points |
| A- | = 900-929 points | C | = 730-769 points |
| B+ | = 870-899 points | C- | = 700-729 points |
| B | = 830-869 points | D+ | = 670-699 points |
| B- | = 800-829 points | D | = 600-669 points |
| | | F | = 0-599 points |

- (1) **Weekly Quizzes:** Each week, you will take a quiz on Canvas. These quizzes cover the Newman chapter from that week. Quizzes will likely consist of multiple choice and short answer questions. **I do not give make-up quizzes.** Please review the attached Course Calendar and make note of the dates. Plan ahead!
- (2) **Video lecture notes:** Since this is a hybrid course (which means some of the “classtime” is conducted online), you will watch some lectures on Canvas and take notes while you watch. You’ll bring your notes to class, and at the beginning of class on the day the notes are due, I will collect your notes. **Notes MUST be stapled. Late notes will not be accepted.** This means that **I will not accept notes submitted at the end of the class period.**
- (3) **In-class film questionnaires:** During each film, you’ll answer questions that I provide to you. These questions are intended to help you remember key aspects of the film and prepare you for your essay.
- (4) **In-class group discussions on films:** After we watch the films, you’ll get into groups and have a discussion about the film. I’ll give each group a task to complete, which will help focus your conversation. Since these are in-class group discussions, you will not be able to make them up if you’re absent.
- (5) **Film analysis papers:** Films are a superb way to learn sociology because they demonstrate the complexities of the social contexts of human behavior. We will watch seven full-length films this quarter, and **you are required to write an analytical paper about FOUR of them.** (You get to choose which four films to write about - see Calendar for due dates.) For each of these essays, you should write a 2-page typed analysis (NOT A SUMMARY!), in which you connect the film to our course material. For example, when we watch “Captain Fantastic” during our socialization week, you can write about total institutions, anticipatory socialization, values and norms. When we watch “The Big Sick,” you can talk about the cultural differences in the film. The purpose of these papers is for you to learn to apply the course ideas to the world around you. In these assignments, you need to be sure that you apply the material correctly. Your essays should be formal in tone, well thought-out, grammatically proofread, and they should contain core concepts or ideas from the course. You should have a bibliography/works cited page for each essay that lists the readings or material that you are integrating into the paper. Having said that, I do NOT grade on grammar, and I don’t care if you use a formal citation method. **All I care about is that I can understand what you are saying and that you demonstrate to me you are learning sociology.**

(6) Participation and homework: Occasionally, I may announce short homework assignments during class. These small, overnight assignments will count toward this portion of your course grade. (If you miss class, you should check with a classmate to see if anything is due the following day.) Additionally, participation is essential to the format of this class and therefore contributes toward your grade. In short, your success in this class depends on your attendance and your *engagement*. “Participation” includes attendance, discussions, group work, and independent in-class assignments. As a result, if you skip class or disrupt class by coming in late regularly, then your participation grade will drop. For each three (3) class periods that you miss (or arrive late), your final grade will drop one full letter grade. This means that you are permitted to miss or arrive late to two (2) classes without consequence to your course grade. If you maintain strong attendance and contribute to class in a meaningful way, your grade will benefit. *Do not take this portion of your grade lightly – excellent attendance and participation can significantly improve your final grade! The hallmark of a successful college student is great attendance.*

The Disability Resource Center serves students with a wide array of learning challenges and disabilities. If you are a student who has a disability or learning challenge for which you have documentation or have seen someone for treatment and if you feel you may need accommodations in order to be successful in college, please contact us as soon as possible. If you are a student with a documented autism spectrum disorder, there is a program of support available to you. If you are a person who requires assistance in case of an emergency situation, such as a fire, earthquake, etc, please meet with your individual instructors to develop a safety plan within the first week of the quarter. The DRC office is located in B 132 or you can call them at 425.564.2498. Deaf students can reach them by video phone at 425-440-2025 or by TTY at 425-564-4110. Please visit our website for application information into our program and other helpful links at www.bellevuecollege.edu/drc

College Anti-Discrimination Statement (Title IX)

Bellevue College does not discriminate on the basis of race or ethnicity; color; creed; national origin; sex; marital status; sexual orientation; age; religion; genetic information; the presence of any sensory, mental, or physical disability; gender identity or veteran status in educational programs and activities which it operates. For further information and contacts, please consult [College Anti-Discrimination Statements](#).

COURSE CALENDAR

The following Course Calendar will be revised as needed. Please note that you will be held responsible for all revisions to the calendar. So, if you miss a class, be sure to immediately check with me regarding any changes. “Newman” refers to the course textbook.

WEEK ONE - Introduction to the class

Readings and Assignments:

- Read syllabus and make sure you understand it
- Read Newman Chapter 1
- **Due Friday (by 11:59pm): Quiz on Chapter 1 (take this quiz through Canvas)**
- **Due Friday (by 11:59pm): Extra Credit Syllabus Quiz (take it on CANVAS!)**

WEEK TWO – The Sociological Imagination

Readings and Assignments:

- Read Newman Chapter 2
- **Due Tuesday:** Watch the following Introductory lecture by clicking on this link (13 min) and take notes (bring your notes to class!):
[http://lectures.bellevuecollege.edu/Flash/djohnson/Sociological_Imagination_-_Flash_\(Large\)_-20110720_03.47.04PM.html](http://lectures.bellevuecollege.edu/Flash/djohnson/Sociological_Imagination_-_Flash_(Large)_-20110720_03.47.04PM.html)
- **DueThursday:** Watch the following Introductory lecture by clicking on this link (17 min) and take notes (bring your notes to class!):
[http://lectures.bellevuecollege.edu/Flash/djohnson/Building_Blocks_-_Flash_\(Large\)_-20110720_03.03.26PM.html](http://lectures.bellevuecollege.edu/Flash/djohnson/Building_Blocks_-_Flash_(Large)_-20110720_03.03.26PM.html)
- **Due Thursday (12:30pm, which is classtime): Quiz on Chapter 2 (take this quiz through Canvas)**
- **Thursday (in class):** FILM SCREENING: Where to Invade Next?

WEEK THREE – Reality

Readings and Assignments:

- **Due Tuesday:** Film Essay on “Where to Invade Next Due” (optional; remember you only need to do 4 out of 7 films). Submit your essay through Canvas
- Read Newman Chapter 3
- **Due Thursday (12:30pm, which is classtime): Quiz on Chapter 3 (take this quiz through Canvas)**
- **DueThursday:** Watch the following Introductory lecture by clicking on this link (13 min) and take notes (bring your notes to class!):
[http://lectures.bellevuecollege.edu/flash/djohnson/Reality_-_Flash_\(Large\)_-20110720_02.39.34PM.html](http://lectures.bellevuecollege.edu/flash/djohnson/Reality_-_Flash_(Large)_-20110720_02.39.34PM.html)



WEEK FOUR – Culture

Readings and Assignments:

- Read Newman, Chapter 4
- **Due Tuesday:** Watch the following introductory lecture (15 min) by clicking on the link and take notes (bring your notes to class!):

[http://lectures.bellevuecollege.edu/Flash/djohnson/Culture_-_Flash_\(Large\)_-20110720_02.18.36PM.html](http://lectures.bellevuecollege.edu/Flash/djohnson/Culture_-_Flash_(Large)_-20110720_02.18.36PM.html)

- **Due Thursday (12:30pm, which is classtime): Quiz on Chapter 4 (take this quiz through Canvas)**
- **Thursday (in class):** FILM SCREENING: The Big Sick

WEEK FIVE – Socialization

Readings and Assignments:

- **Due Tuesday:** Film Essay on “The Big Sick” (optional; remember you only need to do 4 out of 7 films) Submit your essay through Canvas
- Read Chapter 5
- **Due Thursday:** Watch the following introductory lecture (15 min) by clicking on the link and take notes (bring your notes to class):
[http://lectures.bellevuecollege.edu/Flash/djohnson/Socialization_-_Flash_\(Large\)_-20110720_01.50.13PM.html](http://lectures.bellevuecollege.edu/Flash/djohnson/Socialization_-_Flash_(Large)_-20110720_01.50.13PM.html)
- **Due Thursday (12:30pm, which is classtime): Quiz on Chapter 5 (take this quiz through Canvas)**
- **Thursday (in class):** FILM SCREENING: Captain Fantastic



WEEK SIX –Socialization and Impression Management

Readings and Assignments: **NOTE: No class on Tuesday, October 22**

- **Due Thursday:** Film Essay on “Captain Fantastic” (optional; remember you only need to do 4 out of 7 films) Submit your essay through Canvas
- **Due Thursday:** Watch the following introductory lecture (15 min) by clicking on the link and take notes (bring your notes to class):
[http://lectures.bellevuecollege.edu/Flash/djohnson/Impression_Management_-_Flash_\(Large\)_-20110720_01.33.24PM.html](http://lectures.bellevuecollege.edu/Flash/djohnson/Impression_Management_-_Flash_(Large)_-20110720_01.33.24PM.html)



WEEK SEVEN – Impression Management

Readings and Assignments:

- Read Chapter 6
- **Due Tuesday (12:30pm, which is classtime): Quiz on Chapter 6 (take this quiz through Canvas)**
- **Tuesday (in class): FILM SCREENING: Meet the Parents**

WEEK EIGHT - Social Class

Readings and Assignments:

- **Due Tuesday:** Film Essay on “Meet the Parents” (optional; remember you only need to do 4 out of 7 films) Submit your essay through Canvas
- **Due Thursday:** Watch the following lecture (25 minutes) and take notes (and bring your notes to class!):
[http://lectures.bellevuecollege.edu/Flash/djohnson/Social_Class_-_Flash_\(Large\)_-20110720_12.30.40PM.html](http://lectures.bellevuecollege.edu/Flash/djohnson/Social_Class_-_Flash_(Large)_-20110720_12.30.40PM.html)
- Read Newman, Chapter 10
- **Due Thursday (12:30pm, which is classtime): Quiz on Chapter 10 (take this quiz through Canvas)**
- **Thursday (in class): FILM SCREENING: Beatriz at Dinner**





WEEK NINE – Race

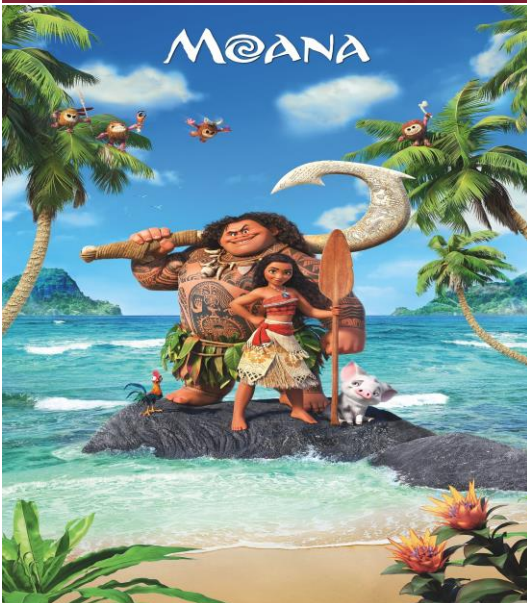
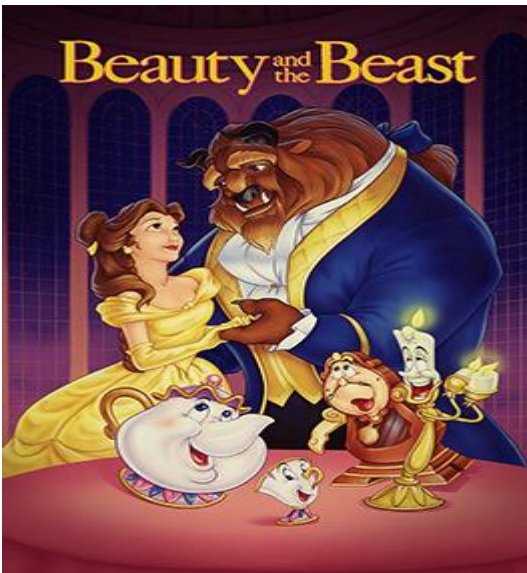
Readings and Assignments:

- **Due Tuesday:** Film Essay on “A Bug’s Life” (optional; remember you only need to do 4 out of 7 films)
Submit your essay through Canvas
- **Due Tuesday:** Watch the following lecture (27 minutes), and take notes (bring your notes to class):
[http://lectures.bellevuecollege.edu/Flash/djohnson/Race and Ethnicity Intro - Flash \(Large\) - 20110720 12.54.23PM.html](http://lectures.bellevuecollege.edu/Flash/djohnson/Race%20and%20Ethnicity%20Intro%20-%20Flash%20(Large)%20-%2020110720%2012.54.23PM.html)
- **Due Thursday:** Watch the following lecture, and take notes (bring your notes to class):
[http://lectures.bellevuecollege.edu/flash/djohnson/racism - Flash \(Large\) - 20120828 03.52.46PM.html](http://lectures.bellevuecollege.edu/flash/djohnson/racism%20-%20Flash%20(Large)%20-%2020120828%2003.52.46PM.html)
- Read Newman, Chapter 11
- **Due Thursday (12:30pm, which is classtime): Quiz on Chapter 11 (take this quiz through Canvas)**
- **Thursday (in class):** FILM SCREENING: Crash

WEEK TEN – Gender

Readings and Assignments:

- **Due Tuesday:** Film Essay on “Crash” (optional; remember you only need to do 4 out of 7 films) Submit your essay through Canvas
- **Due Tuesday:** Watch the following lecture and take notes (bring your notes to class!) [http://classes.student.bellevuecollege.edu/Flash/djohnson/Sex_and_Gender_-_Flash_\(Large\)_-20110719_03.56.35PM.html](http://classes.student.bellevuecollege.edu/Flash/djohnson/Sex_and_Gender_-_Flash_(Large)_-20110719_03.56.35PM.html)
- **Due Thursday:** Watch the following lecture and take notes (bring your notes to class!): http://lectures.bellevuecollege.edu/Flash/djohnson/Masculinity_and_Femininity_-_Flash_%28Large%29_-_20120827_03.32.12PM.html
- Read Newman, Chapter 12
- **Due Thursday (12:30pm, which is classtime): Quiz on Chapter 12 (take this quiz through Canvas)**
- **Thursday (in class): FILM SCREENING: TBD**



WEEK ELEVEN – Course Wrap-up

Readings and Assignments: **NOTE: No classes on Thursday, November 28th – Happy Thanksgiving!**

- **Due Tuesday:** Film Essay due (optional; remember you only need to do 4 out of 7 films) Submit your essay through Canvas

WEEK TWELVE –

There is no final exam in this class. Congrats on finishing!

“Top Ten” Campus Resources for Students

(as chosen by Sociology Instructors)

In alphabetical order:

Academic Success Center – Get free (!) tutoring (in virtually any subject), writing help, or math assistance at this great campus resource! Students who visit the Academic Success Center, we believe, do better in their classes. Stop by the Center in D204, or visit them online at <http://bellevuecollege.edu/asc/>

CEO (Career Education Options) – This is an EXCELLENT program for students aged 16-20 who did not receive high school diplomas. CEO advises and mentors its students, helping them attain a degree. Many of our students, with the help of CEO, have succeeded at their second chance at education. To learn more, visit <http://bellevuecollege.edu/ceo/> or call (425) 564-4035

Counseling Center – Did you know that BC offers free, short-term counseling for students? If you’re having a problem in your life and you’d like to talk to someone about it, consider seeing a BC Counselor. We have referred our students to the Counseling Center for a very wide range of issues, ranging from stress and depression to relationship problems to sexual assault and other forms of abuse. BC’s Counselors are sensitive, understanding, and trained. To make an appointment with a counselor, call (425) 564-2212. If you have a crisis and cannot reach the Counseling Center, call the 24 hour Crisis Clinic Hotline at (206) 461-3222 or 1-800-244-5767.

DRC (Disability Resource Center) – Although many BC students already know about the great people at the Disability Resource Center, there are some students with disabilities who haven’t yet gone by the DRC for assistance. If you have any kind of disability whatsoever, we strongly encourage you to visit the DRC in B132. They are a wonderful group of folks who are dedicated to providing students with open, fair, and equitable access to education. You can also visit them online at <http://bellevuecollege.edu/drc/>

Human Development Classes and Workshops – The Counseling Center offers many classes that can have long-term impact on your life, such as “Stress Management,” “Selecting a Major,” “Assertive Communication,” “Building Self-Esteem,” and “Race in America.” These classes typically range from one to three credits, so they don’t meet as often as sociology courses, nor do they cost as much money.

LGBTQ Resource Center – The LGBTQ Resource Center is a place on campus where students can feel safe to be themselves, free from harassment, prejudice, or ridicule. Hang out, meet new people, use the computers to get some work done, or check out the books on a variety of LGBTQ-related themes. For more information, stop by their office in Student Programs (upstairs from the cafeteria/fish bowl!) or call them at (425)564-6041.

MCS (Multicultural Student Services) – MCS specializes in assisting students of color, gay/lesbian/bisexual/transgender students, and refugee and immigrant students. BC’s MCS office is wonderful! MCS aims to help all students reach their academic goals, so all BC students are welcome to use MCS’s services free of charge. MCS is really wonderful at helping *all* students feel comfortable and welcome at Bellevue College. They will help integrate you into the life of our College. MCS has been a shoulder our students have leaned upon and a network of friends to turn to. We have seen MCS help with a wide variety of personal and professional challenges, from figuring out how to pay for college and secure childcare for kids, to

personal counseling and advising. MCS pretty much can do it all – and if they can't, they can DEFINITELY connect you with the right people who can! For more information, visit

<http://bellevuecollege.edu/mcs/index.html> , stop by their office in B233, or call them at (425) 564-2208

Student Programs – Meet new people! Get involved! There is a wealth of student clubs and organizations on our campus. The Muslim Student Association, the Math Club, the Black Student Union, El Centro Latino, the Peer-to-Peer Mentoring Program, the Street Dance Club, Student Government, and MANY more organizations (there are dozens!) are housed in Student Programs. We are confident that every student can find something of interest. Stop by Student Programs in room C212, or visit their site at <http://bellevuecollege.edu/stupro/>

TRiO – This department provides *excellent* academic support for students who have limited incomes, documented disabilities, OR who are the first in their families to attend college. Students tell us that their experiences with TRiO are amazing, and we have personally witnessed our students THRIVE (!) with TRiO's assistance and guidance. Students who join TRiO are given close and intensive academic advising, lessons in study skills, tutoring, and overall support not only as students but as human beings. For more information, visit <http://bellevuecollege.edu/trio/> , stop by their office in B233, or call them at (425) 564-5475.

Veterans Office – If you are a veteran of the United States Military, BC's Veterans Office can help you with a variety of issues, most notably financial assistance. They will guide you along the GI Bill benefits, and they can help you activate your Veterans Affairs Educational Benefits. For more information about your options, visit <http://fa.bellevuecollege.edu/veterans> To contact them, call (425) 564-2220.