

Kick off the 2013 academic year by joining us for a

## **D-Building Progressive Potluck and Open House**

Stop by D-104 and D-204 from 10:00 to 2:00 on Friday, September 20.

*Find out how the Faculty Commons in D-104 can help your teaching.*

*Learn how the Academic Success Center in D-204 supports student success.*

*Meet Student Programs Representatives and learn what students care about!*

**Bring your favorite main dish or dessert to share for our potluck lunch. Faculty Commons t-shirts will be raffled off!**



This is a current listing of programming and professional development opportunities from the Faculty Commons as of September 16. Register for BC events on our **blog**: <http://depts.bellevuecollege.edu/facultycommons/>. Click on **Registration for Events on the left**. For more information, contact Marika or Joan in the Faculty Commons, D-104.

Fall Workshops & Services .....	3
Teaching with Canvas: Theory and Practice .....	3
Full Time Faculty Orientation.....	3
Part Time Faculty Orientation .....	3
Faculty Mentoring Pilot Program: Mentoring toward Tenure.....	3
Educational Equity Workshop.....	3
Teaching Squares.....	4
Faculty Stories: Do you have a teaching related story to tell?.....	4
Small Group Instructional Diagnosis (SGID).....	4
Team-Based Learning for Student Success Workshop Series.....	4
Integrating Critical Thinking into Your Teaching .....	4
Integrate Sustainability In Your Course .....	4
Adjunct Faculty Hiring Support Workshop Series .....	5
Classroom Assessment Techniques Workshop Series .....	5
Basic HTML Workshop for Canvas Instructors .....	5
Creating Presentations with Prezi Workshop .....	5
Universal Design for Learning Workshop Series.....	5
Fall Quarter Book Discussions .....	6
Pedagogy of the Oppressed.....	6
BBC Reads Book 2013-2014: The Immortal Life of Henrietta Lacks.....	6
The Paideia Proposal .....	6
Fall Brown Bags / Conversations / Focus Groups.....	7
Maximizing Brain Function Brown Bag Talk .....	7
Improving Your Health: How to Get Started Brown Bag Talk .....	7
Math Across the Curriculum Brown Bag Talk .....	7
The Evaluation Process: How It Works & How to Prepare.....	7
Intersections Town Hall Meeting.....	7

<i>Rubrics Swap Meet: See What Others Are Doing</i> .....	7
<i>The Student Centered Syllabus</i> .....	8
<i>Library Collections Review Brown Bag: Book Culling</i> .....	8
<i>Savvy Teaching &amp; Learning with Business Databases</i> .....	8
<i>The Willpower Instinct Brown Bag Talk</i> .....	8
 <i>President's Office Hours in the Faculty Commons</i> .....	 9
 <i>Speakers</i> .....	 9
<i>Cable Green: Open Learning Resources</i> .....	9
<i>Annie Murphy Paul: BRILLIANT: The Science of How We Get Smarter</i> .....	9
 <i>Festivals &amp; Celebrations</i> .....	 9
<i>Fall Transfer Week: September 30-October 4</i> .....	9
<i>Disability Pride Events in October (National Disability and Employment Month)</i> .....	9
 <i>Call for Winter Quarter 2014 Proposals</i> .....	 9
 <i>President's Innovation Award: Open Educational Resources and Access to Education</i> .....	 10
 <i>Wellness</i> .....	 11
<i>Meditation Class with Ewan Magie (open to all faculty and staff)</i> .....	11
<i>Seeds of Hope Gardening Club with Karrin Peterson (open to all faculty and staff)</i> .....	11
<i>Walking Club with Joan Hatfield (open to all faculty and staff)</i> .....	11
<i>Personal Fitness Consultations with Kelly Elsenbaumer and Peter Prescott (open to all faculty and staff)</i> .....	11
<i>Low Ropes Team Building Course with Peter Prescott (open to all faculty and staff)</i> .....	11

## Fall Workshops & Services

### Teaching with Canvas: Theory and Practice

---

Ongoing self-paced and facilitated online instruction starts September 16<sup>th</sup> 2013.

This course is specifically designed to teach instructors the how and why of online teaching with canvas. Perfect for new online instructors and modular so that instructors with varied backgrounds and experience can select the learning modules that best apply to their needs.



**Enrollment is ongoing but capped at 15 participants a quarter.**  
Keep your eyes peeled for emails about registration.

#### For more information:

**Tom Gibbons**, Online Pedagogy Faculty Lead  
[tom.gibbons@bellevuecollege.edu](mailto:tom.gibbons@bellevuecollege.edu)

### Full Time Faculty Orientation

---

**Monday, September 16, 10:00-4:00 in D-104**

A stipend from the Office of Instruction is available for participating faculty upon completion of the orientation evaluation.



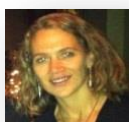
**For more information:** Marika Reinke, Faculty Commons Director at [mreinke@bellevuecollege.edu](mailto:mreinke@bellevuecollege.edu)

### Part Time Faculty Orientation

---

**Thursday, September 26, 3 pm – 6:30pm or Friday, September 27, 9 am – 12:30 in D-104 (Select one day/ time when you register.)**

New PT faculty members please join us as we welcome you to the basics of Bellevue College life and culture as it relates to teaching and learning and the classroom. We will cover contractual items like the Part-Time performance evaluation process, as well as teaching tips, syllabus role and requirements, benefits resources, student case studies facilitated by student services and other need to know items.



Light refreshments will be served. **A \$75 stipend from the Office of Instruction is available for participating faculty upon completion of the orientation evaluation.**

#### Registration:

<https://bellevuecollege.edu/surveys/TakeSurvey.aspx?PageNumber=1&SurveyID=n2KI6p4K&Preview=true>

**For more information:** Marika Reinke, Faculty Commons Director at [mreinke@bellevuecollege.edu](mailto:mreinke@bellevuecollege.edu) or Joyce Carroll, Office of Instruction [joyce.carroll@bellevuecollege.edu](mailto:joyce.carroll@bellevuecollege.edu)

### Faculty Mentoring Pilot Program: Mentoring toward Tenure

---

**Orientation for mentors: September 11<sup>th</sup> from 10 am to 2:30.**

**Follow up schedule to be determined by participant schedules.**

This pilot program brings first-year tenure track faculty together with experienced mentors to provide support as the new faculty adjust to and understand the tenure process; incorporate cultural competency as a practice; engage in professional development, goal setting, and progress; and learn about Bellevue College's institutional culture.



Participation is limited to the incoming tenure-track faculty cohort and tenured mentors.

**The Faculty Commons is still seeking experienced mentors for incoming candidates!** **For more information:** Catherine Berkenfield, Mentoring Program Faculty Lead  
[cberkenfield@bellevuecollege.edu](mailto:cberkenfield@bellevuecollege.edu)

### Educational Equity Workshop

---

This workshop begins with an overnight retreat Wednesday September 11 and Thursday, September 12, 2013. Follow Up sessions are to be held on Friday afternoons from 2:00 p. m. – 4:30 p.m. on the following dates: Oct. 4, 11, 25, Nov. 8 and 22.



This educational equity workshop will support faculty, tenure candidates, TES committees and other faculty leaders' success. The pilot workshop will work with 2<sup>nd</sup> and 3<sup>rd</sup> year tenure candidates in an effort to support student success and faculty retention.

After the opportunity to create bonds with our learning community, the workshop will continue throughout the academic year, with bi-monthly sessions that allow us time to learn, discuss, experience, and come to a greater awareness of the diversity of on our campus.

**For more information:** Kim Pollock, Cultural & Ethnic Studies Faculty, Educational Equity Program Lead, [kpollock@bellevuecollege.edu](mailto:kpollock@bellevuecollege.edu) & the Educational Equity Development Team Ron Holland & Sayumi Irey

## Teaching Squares

Connect with and learn from faculty across campus through the formation of a four member Teaching Square. Each member will observe each other's courses and participate in a one-on-one discussion. Then the Teaching Squares will meet as a group for discussion. Finally, individuals will submit a short reflection on the process. **Stipend: \$150 for all faculty members** **Schedule will be determined by participant schedules. Participation is limited to 20.**



### Application:

<https://bellevuecollege.edu/surveys/TakeSurvey.aspx?PageNumber=1&SurveyID=n4KI7551&Preview=true>

**For more information:** Lisa Harris Classroom Strategies Faculty Lead  
[lisa.harris@bellevuecollege.edu](mailto:lisa.harris@bellevuecollege.edu)

## Small Group Instructional Diagnosis (SGID)

**Don't wait until the end of the quarter to get feedback! Sign-up for a SGID!** A Small Group Instructional Diagnosis (SGID) is a formative assessment of students' learning - a mid-term opportunity for feedback from students. A SGID can be scheduled at any time, but ideally takes place mid-quarter. SGIDs are conducted during class and are conducted by a facilitator - ideally someone other than the instructor - in order to give students greater freedom to express their views. Students are divided into small groups and answer questions about the course and the instruction. The facilitator acts as a neutral party who simply records the feedback and later delivers it to the instructor.

### Registration:

<https://bellevuecollege.edu/surveys/TakeSurvey.aspx?PageNumber=1&SurveyID=l8KH9m4M&Preview=true>

**For more information about SGIDs and Stories:** Lisa Harris, Classroom Strategies Faculty Lead [lisa.harris@bellevuecollege.edu](mailto:lisa.harris@bellevuecollege.edu)

## Team-Based Learning for Student Success Workshop Series

**Tuesday, October 8 & 22, November 5 & 19 12:30-2:30 in D-104**



These hands-on workshops will guide faculty as they develop team-based learning strategies for student success. Workshops will involve discussion, application, and reflection.

### Registration:

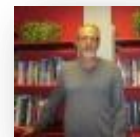
<https://bellevuecollege.edu/surveys/TakeSurvey.aspx?PageNumber=1&SurveyID=n4KI7651&Preview=true>

**For more information:** Catherine Berkenfield, Mentoring Program Faculty Lead [cberkenfield@bellevuecollege.edu](mailto:cberkenfield@bellevuecollege.edu) and Miranda Kato, IBIT Faculty, [miranda.kato@bellevuecollege.edu](mailto:miranda.kato@bellevuecollege.edu)

## Integrating Critical Thinking into Your Teaching

**Thursday, Oct 10, Nov 7, Jan 16, and Feb 13 3:00-4:30 in D-104**

What is Critical Thinking and how can we best teach it? This seminar will provide a quick introduction to critical thinking and an opportunity to develop or refine curriculum in this area. BC philosophers will provide a free open source Critical Thinking text complete with exercises and assignments and will work with you to adapt the critical thinking curriculum to the needs of your discipline. Upon completion of this seminar you will have text, exercises and assessments relevant to your classes and the resources to teach critical thinking Gen Ed outcomes effectively.



### Registration:

<https://bellevuecollege.edu/surveys/TakeSurvey.aspx?PageNumber=1&SurveyID=n4KI7851&Preview=true>

**For more information:** Russ Payne, Philosophy Faculty,  
[william.payne@bellevuecollege.edu](mailto:william.payne@bellevuecollege.edu)

**Fall Quarter 2013 we will again offer this popular workshop!**

## Integrate Sustainability in Your Course

**Workshop meets on the following Thursdays: November 7th, November 14th, December 5th, January 9th, and January 16th from 1:30pm-4:30pm in D-104**

Interested in Sustainability but struggling with how it applies to your classroom and content? The goal of the workshop is to enrich your course through the self-directed design of teaching materials, assignments and outcomes that infuse sustainability related concepts and principles.

**Stipend: \$1000** for all faculty members upon completion of sustainability related materials, assignments, and **full in class participation**. All materials needed for the workshop will be provided through the SESF fund. Stipend is funded through the SESF fund. **Enrollment is limited to 15 participants.**

### For more information:

Lisa Harris, Lead Faculty Sustainability Rep,  
[lisa.harris@bellevuecollege.edu](mailto:lisa.harris@bellevuecollege.edu)

Deric Gruen, Office of Sustainability  
Director [deric.gruen@bellevuecollege.edu](mailto:deric.gruen@bellevuecollege.edu)

### Registration:

<https://www.bellevuecollege.edu/surveys/TakeSurvey.aspx?PageNumber=1&SurveyID=84KJ4571&Preview=true>

**Registration will close on Friday, October 25, 2013 at midnight. Enrollment is limited to 15 participants.**

## Adjunct Faculty Hiring Support Workshop Series



**Wed, Oct 16, 1:00-3:00 and Wed, Nov 13, 1:00-3:00 in D-104**

This two-part workshop will help adjunct faculty analyze job descriptions and will provide guidance for creating application materials and teaching demonstrations for full time openings.

### Registration:

<https://bellevuecollege.edu/surveys/TakeSurvey.aspx?PageNumber=1&SurveyID=n4KI7951&Preview=true>

**For more information:** Joan Hatfield, Faculty Commons Program Manager, [joan.hatfield@bellevuecollege.edu](mailto:joan.hatfield@bellevuecollege.edu) and Sue Miller, Life Sciences Faculty, [smiller@bellevuecollege.edu](mailto:smiller@bellevuecollege.edu)

## Basic HTML Workshop for Canvas Instructors

**Thursday, October 25, 12:30—2:00 in D-104**

Learn how to customize html and cascading sheets in your Canvas course site. This workshop is an introduction to creating and modifying html in Canvas, using inline style sheets to further customize your online classes, and create a more engaging environment for students. Topics will include introduction to html, introduction to CSS, linking, creating lists, using iframes, modifying text color, modifying text size, customizing the position of content on your pages, and more.



### Registration:

<https://bellevuecollege.edu/surveys/TakeSurvey.aspx?PageNumber=1&SurveyID=n4KI7m51&Preview=true>

**For more information:** Ron Austin, IBIT Faculty, [ron.austin@bellevuecollege.edu](mailto:ron.austin@bellevuecollege.edu)

## Classroom Assessment Techniques Workshop Series

**Monday, October 28, 12:30-2:00 in D-104**

Using the classic teaching resource **Classroom Assessment Techniques**, this first workshop will cover an overview of classroom assessment techniques, how to select appropriate techniques, and guidelines for success. Participants will be able to borrow or purchase (at a discount) copies of **Classroom Assessment Techniques**. Subsequent workshops will be held winter and spring quarters to explore applications of specific assessment techniques.



### Registration:

<https://bellevuecollege.edu/surveys/TakeSurvey.aspx?PageNumber=1&SurveyID=n4KI7I51&Preview=true>

**For more information:** Joan Hatfield, Faculty Commons Program Manager, [joan.hatfield@bellevuecollege.edu](mailto:joan.hatfield@bellevuecollege.edu)

## Creating Presentations with Prezi Workshop

**Wednesday, November 6, 12:30-2:00 in D-104**

This workshop will provide a quick overview of the most popular screencast applications, with a specific focus on Prezi. See examples of created Prezi screencasts, set up your own free Prezi account, learn basic Prezi features, and build your own basic Prezi using photos, graphics, texts, and video provided by the instructor.



### Registration:

<https://bellevuecollege.edu/surveys/TakeSurvey.aspx?PageNumber=1&SurveyID=n4KI7n51&Preview=true>

**For more information:** Bruce Wolcott, IBIT Faculty, [bwolcott@bellevuecollege.edu](mailto:bwolcott@bellevuecollege.edu)

## Universal Design For Learning (UDL)

**Thursday, October 31 & November 14 2:30-4:00 in D-104**

Two presentations & workshops will be presented by the UDL cohort sponsored by the Office of Instruction:

- Introduction to Universal Design for Learning (Oct. 31)
- Top 5 UDL Strategies Workshop (Nov. 14)

"Would you like to learn about the top 5 things you can do to make your lessons and curriculum more accessible to all your students? Come to the UDL -- Universal Design for Learning -- workshop series (part one and two) and see how simple UDL can really be to incorporate into what you already do in the classroom. This workshop will be led by the UDL cohort of faculty who have been making changes in their own classes since January and they have wonderful experiences to share as well as suggestions for you. Come join us and learn some great, concrete ways to make your teaching more UDL."

**For more information:** Contact one of the UDL representatives.

- Tom Gibbons, English & Faculty Commons
- Rashmi Koushik, Adult Basic Education
- Alice Jenkins, IBIT
- Howard Haemmerle, Science
- Mandie Nash, Math
- Aron Segal, Social Sciences, Accounting

**Registration for both workshops:**

<https://www.bellevuecollege.edu/surveys/TakeSurvey.aspx?PageNumber=1&SurveyID=84KJ4771&Preview=true>

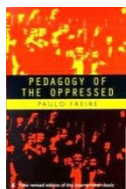


## Fall Quarter Book Discussions

The Faculty Commons will purchase and loan books to registered participants. Participants will be able to purchase books at a discount.

### Pedagogy of the Oppressed

Friday, October 11 and Friday October 25,  
1:30-3:00 in D-104



Through the right kind of education, the book suggests, avoiding authoritarian teacher-pupil models and based on the actual experiences of students and on continual shared investigation, every human being, no matter how impoverished or illiterate, can develop a new awareness of self, and the right to be heard.

**Read and discuss ideas with other faculty.**

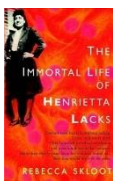
#### **Registration:**

<https://bellevuecollege.edu/surveys/TakeSurvey.aspx?PageNumber=1&SurveyID=n4KI7p51&Preview=true>

**For more information:** Yoshiko Harden, VP of Equity and Pluralism  
[yoshiko.harden@bellevuecollege.edu](mailto:yoshiko.harden@bellevuecollege.edu) and  
Denise Johnson, Social Science Faculty  
[denise.johnson@bellevuecollege.edu](mailto:denise.johnson@bellevuecollege.edu)



### BBC Reads Book 2013-2014: The Immortal Life of Henrietta Lacks



Monday, October 7: 1:30-2:30PM Part One: Life  
Monday, October 21: 1:30-2:30PM Part Two: Death  
Monday, November 4: 1:30-2:30PM  
Part Three: Immortality

Read and discuss the book, *The Immortal Life of Henrietta Lacks*, during fall quarter in the Faculty Commons, D-104. Plan ways to incorporate the book into your teaching winter and spring quarters. This book is excellent for all disciplines, with applications to science, medicine, ethics, social issues, racial equity, nonfiction writing, etc.

**Read and discuss ideas with other faculty.**

#### **Registration:**

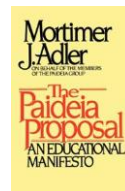
<https://bellevuecollege.edu/surveys/TakeSurvey.aspx?PageNumber=1&SurveyID=n4KI8551&Preview=true>

**For more information:** Joan Hatfield  
[joan.hatfield@bellevuecollege.edu](mailto:joan.hatfield@bellevuecollege.edu)



### The Paideia Proposal

Wednesday, October 30 and November 20  
1:30-2:30 in D-104



Mortimer Adler's Paideia proposal "breaks" education into three types which students should receive in equal measure:

(a) knowledge acquisition:

this is where direct teacher/student instruction goes on, and where the student learns to store and recall facts.

(b) development of intellectual skill: this is where the student "learns by doing," and practices the skill under the teacher's facilitation.

(c) increase in understanding and insight: this is where students learn to evaluate, analyze, synthesize, and create ideas from ideas. Students engage in teacher-led discussion and reflections while learning "higher order thinking" skills.

**Read and discuss ideas with other faculty.**

#### **Registration:**

<https://bellevuecollege.edu/surveys/TakeSurvey.aspx?PageNumber=1&SurveyID=n4KI8651&Preview=true>

**For more information:** Mark Storey, Philosophy Faculty  
[mark.storey@bellevuecollege.edu](mailto:mark.storey@bellevuecollege.edu)



## Fall Brown Bags / Conversations / Focus Groups

---

### Maximizing Brain Function Brown Bag Talk

**Monday, September 30, 12:30-1:30pm in D-104**

Latest neuroscience research has revealed the importance of exercise, sleep, stress management, etc. on cognitive function, memory, and learning. Join us for a discussion of the latest research and how to apply it to improve your teaching and personal life.



**Registration:**

<https://bellevuecollege.edu/surveys/TakeSurvey.aspx?PageNumber=1&SurveyID=n4KI8851&Preview=true>

**For more information:** Joan Hatfield, FC Program Manager  
[joan.hatfield@bellevuecollege.edu](mailto:joan.hatfield@bellevuecollege.edu)



### Improving Your Health: How to Get Started Brown Bag Talk

**Wednesday, October 2, 12:30-1:30 in D-104**

Learn what you can do now to set health improvement goals, as well as how to plan and implement behavior change in areas such as exercise, nutrition, stress management, sleep, etc.



**Registration:**

<https://bellevuecollege.edu/surveys/TakeSurvey.aspx?PageNumber=1&SurveyID=n4KI8951&Preview=true>

**For more information:** Kelly Elsenbaumer, PE/Health Faculty  
[kelly.elsenbaumer@bellevuecollege.edu](mailto:kelly.elsenbaumer@bellevuecollege.edu)

### Math Across the Curriculum Brown Bag Talk

**Wednesday, October 9, 11:30-12:30 in D-104**

Do your students struggle with your content because they're getting bogged down in the math behind the concept? Do you wonder how you could support math instruction, and math instruction could support your instruction? Come discuss math across the curriculum and the multitude of issues and opportunities associated with it.



**Registration:**

<https://bellevuecollege.edu/surveys/TakeSurvey.aspx?PageNumber=1&SurveyID=n4KI8151&Preview=true>

**For more information:** Ryan Bauer, Math Faculty  
[ryan.bauer@bellevuecollege.edu](mailto:ryan.bauer@bellevuecollege.edu)

### The Evaluation Process: How It Works & How to Prepare

**Wednesday, October 9, 1:30-3:00 in D-104**

Find answers to questions you have about the logistics of the evaluation process—both peer and student evaluations. When and how often does it happen? What are your colleagues looking for when they observe your class? How can you get a higher response rate on student evaluations? Do you sometimes feel like you're doing everything right, but it's not showing on your course evaluations? We will discuss strategies for getting through the evaluation process, as well as strategies to manage your image in the classroom and be rated as the rock star you are.



**Registration:**

<https://bellevuecollege.edu/surveys/TakeSurvey.aspx?PageNumber=1&SurveyID=n4KI8m51&Preview=true>

**For more information:** Lisa Harris, IBIT Faculty, Classroom Strategies Program Lead  
[lisa.harris@bellevuecollege.edu](mailto:lisa.harris@bellevuecollege.edu)



### Intersections Town Hall Meeting

**Tuesday, October 15, 12:30-1:30 in D-104**

Privilege doesn't stop at skin pigment. Come join a lively interactive discussion on male privilege within communities of color and discover opportunities to learn more!



**Registration:** For more information: Ron Holland, TRIO Program Coordinator,  
[ron.holland@bellevuecollege.edu](mailto:ron.holland@bellevuecollege.edu)

### Critical Conversations Series

**Discussions will be held on Tuesday, October 15 and November 13.**

**1:45-3:00 in D-104**



This is a monthly opportunity to talk with your colleagues about cultivating more inclusive classrooms. Specific topic/agenda will be later announced.

**Registration:**

<https://bellevuecollege.edu/surveys/TakeSurvey.aspx?PageNumber=1&SurveyID=n4KI8751&Preview=true>

**For more information:** Lori Saffin, Instructional Pluralism Chair at  
[lori.saffin@bellevuecollege.edu](mailto:lori.saffin@bellevuecollege.edu)

### **Rubrics Swap Meet: See What Others Are Doing**

**Wednesday, October 16, 12:30-2:00 in D-104**



BC FACULTY  
prof·dev

Whether you have been using rubrics for years, or you're not quite sure what a rubric is or should be, please come and join our discussion. Bring your rubrics and let's discuss what makes a fair and informative rubric. By the way, we are working on a Canvas training guide on rubrics – come help design this guide.

#### **Registration:**

<https://bellevuecollege.edu/surveys/TakeSurvey.aspx?PageNumber=1&SurveyID=n4KI8o51&Preview=true>

**For more information:** Lisa Harris, IBIT Faculty, Classroom Strategies Program Lead, [lisa.harris@bellevuecollege.edu](mailto:lisa.harris@bellevuecollege.edu)

### **Library Collections Review Brown Bag: Book Culling**

**Tuesday, October 29, 1:30-3:00 in D-104**

This session will be led by both librarians and faculty members who have culled (or reviewed) sections in the library that relate to their respective disciplines. The issue of identifying and weeding out old and irrelevant books will be addressed. The goal is to empower faculty to use their expertise in the field to assess the value of books in the LMC collection and familiarize faculty with the collection so that they can identify gaps and/or make purchase requests.

BC FACULTY  
prof·dev



#### **Registration:**

<https://bellevuecollege.edu/surveys/TakeSurvey.aspx?PageNumber=1&SurveyID=n4KI9651&Preview=true>

**For more information:** Brian Casserly, History Faculty, [brian.casserly@bellevuecollege.edu](mailto:brian.casserly@bellevuecollege.edu)

### **Savvy Teaching & Learning with Business Databases**

**Wednesday, October 30, 12:00-12:30 and Tuesday, November 5, 1:00-1:30 in D-104**

Come learn how to find better resources that you'd prefer your students use. Join this brown bag series to discover Database Superstars at the Library Media Center.



#### **Registration:**

<https://bellevuecollege.edu/surveys/TakeSurvey.aspx?PageNumber=1&SurveyID=n4KI9751&Preview=true>

**For more information:** Julia Paulsen, LMC Reference Librarian, [jpaulsen@bellevuecollege.edu](mailto:jpaulsen@bellevuecollege.edu)

### **The Student Centered Syllabus**

**Tuesday, November 5, 2:30-3:30 in D-104**

What values are you conveying to students in your syllabi? Have you considered how you can use the syllabus as a teaching/learning tool and as a way to engage students more deeply? Are you looking for ideas about how to jazz up your syllabus? Are you interested in seeing examples of other people's syllabi, including 'award-winning' syllabi? Please join us for an informative discussion of the current research on what makes a 'good' syllabus. Bring your questions, and please bring one of your syllabi!

BC FACULTY  
prof·dev



#### **Registration:**

<https://bellevuecollege.edu/surveys/TakeSurvey.aspx?PageNumber=1&SurveyID=n4KI8p51&Preview=true>

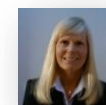
**For more information:** Denise Johnson, Social Science Faculty, [denise.johnson@bellevuecollege.edu](mailto:denise.johnson@bellevuecollege.edu)

### **The Willpower Instinct Brown Bag Talk**

**Thursday, November 7, 12:30-1:30 in D-104**

Need more willpower this time of year? There's scientific research that shows how lifestyle factors such as exercise, sleep, meditation, etc. can actually help increase your willpower "instinct."

Come hear a review of the latest findings about willpower outlined in the recent book written by Stanford professor Kelly McGonigal, Ph.D.



Health & Wellness

#### **Registration:**

<https://bellevuecollege.edu/surveys/TakeSurvey.aspx?PageNumber=1&SurveyID=n4KI9851&Preview=true>

**For more information:** Joan Hatfield, Faculty Commons Program Manager [joan.hatfield@bellevuecollege.edu](mailto:joan.hatfield@bellevuecollege.edu)



## President's Office Hours



Join Dr. Rule for a Q&A session in D-104 every 1<sup>st</sup> and 3<sup>rd</sup> Monday from 12:00-1:00pm. Bring your lunch and your questions.

October 7, October 21, November 4, November 18, December 2

## Special Speakers

### Cable Green and Connie Brighton: Open Learning Resources

**Friday, October 25, 12:00-1:30 in D-104**

Come hear the latest information on local and global trends in Open Learning Resources from Cable Green, PhD, Director of Global Learning, Creative Commons and Connie Broughton, Director of eLearning and Open Education at SBCTC. Learn about the Gates-funded Open Course Library, other open source materials like the Carnegie Mellon courses, and how instructors are using other open resources (Khan academy, moocs, etc.) Presented and sponsored by the Office of Instruction.



**Registration:**

<https://bellevuecollege.edu/surveys/TakeSurvey.aspx?PageNumber=1&SurveyID=n4KI9551&Preview=true>

**For more information:** Connie Broughton, Director of eLearning and Open Education at SBCTC [cbroughton@sbctc.edu](mailto:cbroughton@sbctc.edu), Joan Hatfield, FC Program Manager [joan.hatfield@bellevuecollege.edu](mailto:joan.hatfield@bellevuecollege.edu)

## Call for Winter Quarter 2014 Proposals

Have an idea for a pedagogical, curriculum or professional development opportunity for faculty and need implementation support? The Faculty Commons can provide space, marketing, networking, registration tools, recruitment, assessment, pedagogical and curricular advice and more. We are looking for ideas that create community, inform practices and that can be disseminated across programs and divisions. Programming can include workshops, speakers series, best practices sharing, book discussions and your best ideas. Ideas both big and small are welcome!

The Faculty Commons Council will seek to support as many proposals as possible and that support the mission of the Faculty Commons.

**Submit a proposal by October 25, 2013 for Faculty Commons Council review:**

**Proposal Application:** <https://bellevuecollege.edu/surveys/TakeSurvey.aspx?PageNumber=1&SurveyID=n4KI9551&Preview=true>

### Proposal Process

- **Proposal Process Opens: September 23**
- **Proposal Process Closes: October 25**
- **Review Process Begins: October 28**
- **Notification of Acceptance: November 18**

**For more information:**

Marika Reinke, Faculty Commons Director [marika.reinke@bellevuecollege.edu](mailto:marika.reinke@bellevuecollege.edu)

Joan Hatfield, Faculty Commons Program Manager [joan.hatfield@bellevuecollege.edu](mailto:joan.hatfield@bellevuecollege.edu)

## Special Speaker

### Annie Murphy Paul: BRILLIANT: The Science of How We Get Smarter

**Monday, October 14, 12:30-2:00 in N-201**

BC FACULTY **prof·dev** The Faculty Commons and Professional Development Committee will sponsor this special talk by Annie Murphy Paul on the Science of How We Get Smarter. For a preview, check out her TED talk [what we learn before we're born](#).



**Join Annie for an informal gathering in D-104 from 2:00 to 4:00.**

**Registration:**

<https://bellevuecollege.edu/surveys/TakeSurvey.aspx?PageNumber=1&SurveyID=mlKImm23&Preview=true>

## Festivals & Celebrations

### Fall Transfer Week

**September 30-October 4**

**For more information:** Brian Foster, Bellevue College Transfer Coordinator and Academic Advisor [brian.foster@bellevuecollege.edu](mailto:brian.foster@bellevuecollege.edu)

### Disability Pride Events in October (National Disability and Employment Month)

**For more information:** Susan Gjolmesli, Disability Resource Center Director, [susan.gjolmesli@bellevuecollege.edu](mailto:susan.gjolmesli@bellevuecollege.edu)

## ***President's Innovation Award: Open Educational Resources and Access to Education***

---

President David Rule has established a \$10,000 award to faculty to encourage teaching and learning excellence around a specifically targeted yearly theme, with the funding being divided among multiple faculty members. Individuals and whole programs/departments/ curricular units, such as certificate programs, are encouraged to apply.



Dave Rule has selected as the theme for 2013-14 the integration of Open Educational Resources in online, hybrid or on campus sections, courses, programs or curricular units in order to reduce the cost of education for our students and thereby increase student access to education.

**Open Educational Resources** are free, usually openly licensed, high quality educational resources that include but are not limited to online textbooks and books like those found in [Google Books](#) or [Open Course Library](#), and or media video libraries like [Ted Education](#) and can include Massive Online Open Courses (MOOCs) offered by [Coursera](#). [Literally millions of dollars](#) have been saved for students by the adoption of these materials in the classroom.

### **Timeline:**

- **Application Deadline:** November 18<sup>th</sup> by Midnight
- **Review and Awards:** December 2<sup>nd</sup>.
- **Presentations:** To be determined in the month of May 2014.

At the end of the project recipients of the award will share their methods and key findings with the community by presenting at the Faculty Commons.

In collaboration with President's office, the Faculty Commons Council will screen candidate applications.

Applications for funding will be considered based on the following criteria;

- **Net lowered educational costs for students.** How much money will students save by adopting open resources in the section, classroom, program, department or certificate?
- **Methods and strategies for facilitating access to technology for underserved students.** How will the project address students need with little or no access to technology?
- **Pedagogical integration and instructional quality.** How will the adoption of these resources be used to enhance and improve teaching and learning in the course?
- **Impact and scope.** Will this project target one section, course(e.g., multiple sections) or a portfolio of courses (e.g., sequenced course offerings)?
- **Community building.** How will this project engage the wider Bellevue College community?
- **Longevity and sustainability.** How will the adoption of open resources for this project, be sustained into the long term?
- **Scalability.** How will this project model and provide a framework for best practices and integration for other faculty, programs, departments and divisions?
- **Overall Innovation.** Be creative, think outside the box, and surprise us. How can Open Educational Resources be leveraged to create innovative and unique -educational experiences?
- **Assessment.** How will you assess the effectiveness of these resources? How will this data be used?

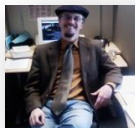
### **Project Application:**

<https://bellevuecollege.edu/surveys/TakeSurvey.aspx?PageNumber=1&SurveyID=p2KI9o73&Preview=true>

### Meditation Class with Ewan Magie (open to all faculty and staff)

**Every Monday from 11:30-12:00**

Seeking health? Peace of mind?  
Mindfulness? Join this ongoing faculty-led meditation class and learn how a few basic meditation tools can positively impact your everyday activities and work.



**Registration is ongoing:**

<https://bellevuecollege.edu/surveys/TakeSurvey.aspx?PageNumber=1&SurveyID=715K669&Preview=true>

**For more information:**

**Ewan Magie, A & H, [emagie@bellevuecollege.edu](mailto:emagie@bellevuecollege.edu)**

### Seeds of Hope Gardening Club with Karrin Peterson (open to all faculty and staff)



**Seeds of Hope** is a gardening club open to all Bellevue College instructors, staff, and administrators interested in or already using garden-based teaching programs. The club is also for any BC employee interested in learning how to garden or for already-gardening employees who wish to meet and discuss master gardening techniques and creative practices.

**Registration is ongoing:**

<https://bellevuecollege.edu/surveys/TakeSurvey.aspx?PageNumber=1&SurveyID=785M956&Preview=true>

	Date	Time	Location
Session 1	Tues, Sept 24	12:00-1:00pm	D-104
Session 2	Tues, Oct 8	12:00-1:00pm	D-104
Session 3	Tues, Oct 29	12:00-1:00pm	D-104
Session 4	Tues, Nov 19	12:00-1:00pm	D-104
Session 5	Tues, Dec 3	12:00-1:00pm	D-104

### Low Ropes Team Building Program (open to all faculty and staff)

There is now a low ropes course on campus and available for individual and team building for all faculty and staff. For more information, contact

Peter Prescott, Wellness Program, [peter.prescott@bellevuecollege.edu](mailto:peter.prescott@bellevuecollege.edu).

### Walking Club with Joan Hatfield (open to all faculty and staff)

**Monday through Friday- 12 – 12:30.**

Need a break in the middle of the day? Join the Walking Club for a 30 minute walk on nearby trails. Meet at D-104 rain or shine. Punch a Faculty Commons card every time you walk. Fill your card to win a t-shirt!

**Registration is ongoing:**

<https://bellevuecollege.edu/surveys/TakeSurvey.aspx?PageNumber=1&SurveyID=n2KH476M&Preview=true>

**For more information:**

**Joan Hatfield, Faculty Commons Program Manager**

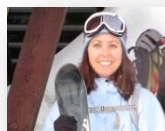
[joan.hatfield@bellevuecollege.edu](mailto:joan.hatfield@bellevuecollege.edu)



### Personal Fitness Consultations with Kelly Elsenbaumer and Peter Prescott (open to all faculty and staff)

Sign up for a 20-minute wellness consultation with Fitness Specialists Kelly Elsenbaumer or Peter Prescott. Get some help designing a program that will address your specific wellness goals. There are a gazillion exercise opportunities right here on campus so build some fitness into your day and have fun. You won't be sorry!

**Consultations are held on Wednesdays for 20 minutes between 12:30pm-1:30pm in D-104.**



To schedule with Kelly:

[Kelly.Elsenbaumer@bellevuecollege.edu](mailto:Kelly.Elsenbaumer@bellevuecollege.edu) or x2355



To schedule with

Peter: [Peter.Prescott@bellevuecollege.edu](mailto:Peter.Prescott@bellevuecollege.edu) or x2032