

PRESIDENT'S OFFICE HOURS

Join Dr. Rule for a Q&A session in **D-104**. Bring your lunch and your questions.

- Wednesday, April 16th at 10:00 am
- Monday, May 19th at 2:00 pm
- Tuesday, June 10th at 3:00 pm



OFFICE OF EQUITY AND PLURALISM

VICE PRESIDENT'S OFFICE HOURS

- Have a question, idea or theory about equity on campus? Come and meet
- **Yoshiko Harden**, share your thoughts and exchange ideas about how to shape the future of the educational equity on campus.

- Thursday, April 24th at 3:30–4:30pm
- Thursday, May 22nd at 3:30–4:30pm
- Thursday, June 19th at 3:30–4:30pm



OFFICE OF HUMAN RESOURCES

VICE PRESIDENT'S OFFICE HOURS

- Have a question, idea or theory about HR's role on campus? Come and meet
- **Aaron Hilliard**, share your thoughts and exchange ideas about how to positively shape the future of our campus community.

- Monday, April 7th at 1:00–2:00pm
- Monday, May 12th at 1:00–2:00pm
- Monday, June 2nd at 1:00–2:00pm

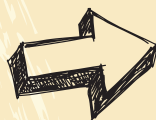


the
FACULTY
COMMONS
is YOU

SPRING 2014

SCHEDULE

This is a current listing of programming and professional development opportunities from the Faculty Commons as of March 17, 2014.



Register for BC events on our blog:

<http://depts.bellevuecollege.edu/facultycommons/events>.

**Check out these opportunities
Spring quarter:**



PROGRAMMING BY
STIPENDS



QUARTER LONG OR MORE
WORKSHOPS



POTLUCK



SERVICES



BOOK
CLUB



SERIES
TWO DAYS OR MORE



POSITION
OPENINGS



ONE TIME
EVENTS

TABLE OF CONTENTS

Assessment, Teaching and Learning	8–9
Community Building	2
Educational Equity & Social Justice	10
Events Calendar	6–7
Instructional Technology and eLearning	4–5
Mentoring	3
Programming by Type & Commitment	11
Sustainability	10
Wellness	2



ORIENTATIONS & COMMUNITY BUILDING

Part Time Faculty Orientation

Select one day/ time when you register.

**Thursday, April 10,
3:00 – 6:30pm or
Friday, April 11,
9:00am – 12:30pm**

New PT faculty members please join us as we welcome you to the basics of teaching and learning at Bellevue College. The agenda includes: Part-Time performance evaluation process, Canvas teaching tips, syllabus role and requirements, benefits resources, connecting with student services and other need to know items. Light refreshments will be served.

A \$75 stipend from the Office of Instruction is available for participating faculty upon completion of the orientation evaluation.

REGISTRATION:
<https://adobeformscentral.com/?f=vWYbpz2ky-Y2-nFtJW3XWA>

For more information:
Marika Reinke, Faculty Commons Director
at mreinke@bellevuecollege.edu or
Joyce Carroll, Office of Instruction
joyce.carroll@bellevuecollege.edu



Faculty Commons Social Hour

**Wednesday, May 14,
4:00–7:00pm**

The Faculty Commons is pleased to invite you to its second annual Social Hour. Come meet and network with peers, enjoy snacks and light dinner, and bring your own bottles to be opened at 5:00pm.



WELLNESS

Meditation Class with Ewan Magie (open to all faculty and staff)

**Meets Mondays, April 7–June 16
12:30–1:00pm**

Seeking health? Peace of mind? Mindfulness? Join this ongoing faculty-led meditation class and learn how a few basic meditation tools can positively impact your everyday activities and work.

REGISTRATION:
<https://adobeformscentral.com/?f=icNCsr8DpaSVdID6EmOVug>

For more information: Ewan Magie, A & H,
emagie@bellevuecollege.edu



Seeds of Hope Gardening Club with Karrin Peterson (open to all faculty and staff)

**Meets Tuesdays, April 8–June 17
12:00–12:30pm**

Seeds of Hope is a professional gardening club open to all Bellevue College instructors, staff, and administrators interested in or already using garden-based teaching programs. The club is also for any BC employee interested in learning how to garden or for already-gardening employees who wish to meet and discuss master gardening techniques and creative practices. Meet east of the Greenhouse. Registration is ongoing:

REGISTRATION:
<https://adobeformscentral.com/?f=icNCsr8DpaSVdID6EmOVug>

For more information, contact: Karrin Peterson, A&H, kpeterso@bellevuecollege.edu



Wellness Center Activities for Students, Staff and Faculty.

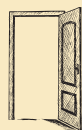
The Wellness Center embraces all that our community, environment and natural surroundings have to offer. This pursuit hopes to enrich the emotional, environmental, occupational, spiritual, intellectual, social and physical well being of students, staff, faculty and the community at large. The Center's activities strive to focus on providing leadership, planning, opportunity, and education in pursuit of healthier lives.

View current offerings at <http://www.bellevuecollege.edu/pe/wellnesscenter/>.

For more information contact Peter Prescott, Wellness Program peter.prescott@bellevuecollege.edu

FACULTY COMMONS VISION

Serve
as a
muse
for continued
teaching
and learning
excellence
and
innovation



MENTORING

Call for Tenure Candidate Mentors for Fall 2014–Spring 2015

The Faculty Commons mentoring program brings first-year tenure-track faculty together with experienced mentors. In this one-year program, mentees get to know the Bellevue College culture and explore their new roles and responsibilities without the pressure of summative evaluation. In addition to the benefits of providing support for new colleagues and participating in a professional community of practice, mentors report “having fun,” “developing friendships,” and “seriously considering issues of work-life balance.”

For AY '14–'15, Bellevue College anticipates 16–18 tenure-track hires. We are looking for tenured faculty who are excited to share their professional expertise and individual strategies for success with new tenure candidates.

The commitment for mentors involves a minimum of 16 hours over the academic year and comes with a stipend. Mentors must participate in a mentoring training and 4 structured meetings with the mentoring cohort (10 hours), as well as individual and small group meetings to help mentees toward their individual goals (6 hours).

Mentors are required to attend a Mentor Orientation on September 10, 2014 from 10:00am – 4:00pm;

Stipend: \$500 for a minimum of 16 hours over one academic year funded through the Office of Instruction. Participation is limited by the number of incoming candidates for the Fall 2014/15 year.

Application Timeline:

- Ongoing applications
- Mentor interviews will begin winter quarter and continue until the positions are filled.
- Until the fourth week of spring quarter, preference will be given to applications from new mentors.

Current mentors are also encouraged to apply for a second year in the program at any time.

For more information and application, contact: Catherine Berkenfield, Mentoring Program Faculty Lead cberkenfield@bellevuecollege.edu, ext. 2121



Call for Mentees! Mentoring for Online Instructors Program

The Mentoring for Online Instructors Program seeks 10 faculty who have taught or would like to teach hybrid/online for BC.

Candidates will:

- Be active, goal-oriented individuals who want to learn about or improve upon best teaching practices for online instruction.
- Work in small mentor-guided groups
- Develop personalized goals, discuss, practice, and reflect on where they are, best practices, and where they would like to be in their service to hybrid/online BC students.

Mentees will need to commit to 12 hours of contact time spread across summer and fall quarter of 2014.

A \$150 stipend will be paid upon completion of the program.

For more information and application, contact: Catherine Berkenfield, Mentoring Program Faculty Lead cberkenfield@bellevuecollege.edu, ext. 2121



Adjunct Faculty Support Hiring Workshop

Registration deadline is April 23.

2 sessions, 3:30–4:30:

April 30, Part 1 - Interview and Teaching Demonstration, May 7, Part 2

This two-part workshop will guide adjunct faculty as they develop job applications and practice teaching demonstrations and interview skills for full-time openings.

REGISTRATION:

<https://adobeformscentral.com/?f=icNCsr8DpaSVdID6EmOVug>

For more information: Sue Miller, Life Sciences Faculty, smiller@bellevuecollege.edu or Sabrina Sanchez, History Faculty, s.sanchez@bellevuecollege.edu



CALL FOR SUMMER/FALL QUARTER 2014 PROPOSALS

Have an idea for a pedagogical, curriculum or professional development opportunity for faculty and need implementation support? The Faculty Commons can provide space, marketing, networking, registration tools, recruitment, assessment, pedagogical and curricular advice and more. We are looking for ideas that create community, inform practices and that can be disseminated across programs and divisions. Programming can include workshops, speakers series, best practices sharing, book discussions and your best ideas. Ideas both big and small are welcome!

The Faculty Commons Council sets aside \$7000 per quarter for proposals and will seek to support as many proposals as possible that support the mission of the Faculty Commons.

Submit a proposal by February 17 for Faculty Commons Council review:

PROPOSAL APPLICATION:

<https://adobeformscentral.com/?f=3VPwclCE2iV6UQ2BwBEJiA>

Proposal Process

- Proposal Due: **May 6**
- Review Process Begins: May 12
- Notification of Acceptance: May 19

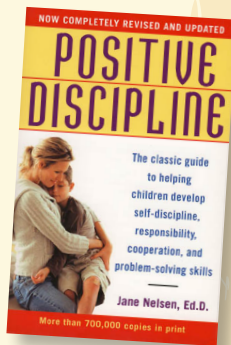
For more information:

*Marika Reinke, Faculty Commons Director
marika.reinke@bellevuecollege.edu*

FACULTY COMMONS VISION

Provide a **safe,**
joyous,
thought-provoking space
where **experimentation**
is encouraged,
questions
are stimulated and
ideas can incubate.

BOOK DISCUSSION



Positive Discipline Parenting

**Meets on three Thursdays
from 2:30–3:30pm,
May 1, May 22, June 12**

Positive Discipline is founded on a principle of mutual respect between parent and child, and it promotes creative cooperation and self-discipline. Give yourself the time to learn and reflect on your parenting techniques by joining this book discussion group. Find a community of reflection, practice, and support among other working parents on campus!

REGISTRATION:

<https://adobeformscentral.com/?f=icNCsr8DpaSVdID6EmOVug>

For more information, contact:
grace.robblings@bellevuecollege.edu

BC Reads! Discussion Group

**Thursdays, May 8,
3:00–4:00pm,**

Ideas and resources for using the current BC Reads! Book for 2014-15 (book will be determined at end of Winter quarter.)

REGISTRATION:

<https://adobeformscentral.com/?f=icNCsr8DpaSVdID6EmOVug>

INSTRUCTIONAL TECHNOLOGY AND ELEARNING



Teaching with Canvas: Canvas 101

**Ongoing self-paced and facilitated
online instruction starts April 7 and
continues until the end of
spring quarter.**

Perfect for new online instructors and modular so that instructors with varied backgrounds and experience can select the learning modules that best apply to their needs. This work - shop is intended to introduce instructors to the available tools in Canvas. It is self-paced, project-based, and guided--a facilitator will be available to answer questions and to evaluate participant projects. The work is designed to be completed within one academic term or less, and should require approximately 20 total hours to complete. This course assumes that you possess basic computing skills: that you can input text into a computer, that you are familiar with basic computer file and folder organization, that you can operate a web browser, and that you can save, upload and download files. If you do not have these skills, you will need to acquire them before you register. Enrollment is ongoing but capped at 30 participants a quarter.

Registration deadline is April 7.

REGISTRATION:

<https://adobeformscentral.com/?f=Vv4f5Db1DTh43qmFIwPSA>

For more information: Ann Minks,
Online Pedagogy Lead at
aminks@bellevuecollege.edu



Online Teaching Best Practices Workshop

**Meets weekly Wednesdays
April 9– June 19
1:30–3:00pm**

Discover how to be a more effective online educator. This pedagogy workshop focuses on investigating current best practices in teaching online/hybrid courses. Discussions and exercises center around topics such as effective course navigation, universal design, accessible content, copyright and fair use, effective discussions and assessments, diversity and equity in online learning, and keeping up with the future of online education.

The workshop will be organized as a seminar, with each meeting focused around particular topics. Most sessions will allow time for both discussion of the topic and time for presentation of redeveloped course material examples.

This is NOT an introductory workshop on how to set up your first course online. This workshop is for instructors who have experience teaching online. To learn how to use Canvas tools, take the Teaching with Canvas: Canvas 101 instead.

Stipend: \$400.00 for all faculty members and upon completion of the online course redesign. Enrollment is limited to 10 participants through a short application process.

Application Deadline is March 31. Notification of acceptance will be sent by April 1.

For more information and/or an application contact: Ann Minks, Online Pedagogy Lead at
aminks@bellevuecollege.edu

FACULTY COMMONS VISION

Act as a Faculty **cultural center** and **voice.**



UBI Interactive Smart Screen - Faculty Evaluation

April 29, 12:30–3:30pm

This is an evaluation session for the UBI interactive smart screen technology. UBI will set up the smart screen installation and selected faculty will participate in this review to determine whether it will be useful in their classes. UBI Interactive website is: <http://www.ubi-interactive.com/>

REGISTRATION:

<https://adobeformscentral.com/?f=icNCsr8DpaSVdID6EmOVug>

For more information: Bruce Wolcott, IBIT Faculty, bwolcott@bellevuecollege.edu



Teaching With Prezi Screencasts Part 1

May 13, 1:30–3:30pm, A109

This workshop is an introduction to Prezi, a flexible Web-based screencast program. This introductory section covers program set up, tools, and provides a hands-on lesson where participants create their own Prezi screencast for publishing on the Internet.

REGISTRATION:

<https://adobeformscentral.com/?f=icNCsr8DpaSVdID6EmOVug>

For more information: Bruce Wolcott, IBIT Faculty, bwolcott@bellevuecollege.edu



Usability Testing: What are your online students really thinking and doing?

Select 30 minute time slots:

2:00 – 4:00pm

Tuesday, May 20

Select 30 minute time slots: 2:00 – 4:00pm Tuesday, May 20th Ever wonder how your students navigate your online Canvas site? Why do students seem lost? How did they find old materials you thought you deleted and why can't they find your new materials and announcements? Get immediate feedback and a glimpse into the student experience in your online course. Observe students complete tasks and literally see and hear how they are thinking about an online site.

REGISTRATION:

<https://adobeformscentral.com/?f=Y6mMVZ%2AvR15oj9xrYMG0dA>

For more information: Ann Minks, Online Pedagogy Lead at aminks@bellevuecollege.edu



Streamline Routine Feedback with TypeltIn

May 12, 1:30–2:30pm

Is giving routine summative feedback taking time away from providing formative feedback to students? TypeltIn is a handy, easy to use, and inexpensive tool that allows you to create, store, and insert grading comments. It can be used with a variety of software applications. This short program will show where to find it and give a demonstration on how the app is used for grading in using Excel and Canvas.

REGISTRATION:

<https://adobeformscentral.com/?f=icNCsr8DpaSVdID6EmOVug>

For more information: Debi Griggs, IBIT Faculty, debi.griggs@bellevuecollege.edu



Teaching With Prezi Screencasts Part 2

May 27, 1:30–3:30pm, A109

This workshop is a continuation of content covered in Part 1 of this 2 part series - Teaching with Prezi Screencasts. Part 2 will review and expand on lessons learned in Part 1 - and cover more advanced applications of the program, including conference screencasts and collaborative editing.

REGISTRATION:

<https://adobeformscentral.com/?f=icNCsr8DpaSVdID6EmOVug>

For more information: Bruce Wolcott, IBIT Faculty, bwolcott@bellevuecollege.edu



Resources Liaisons at the Library Media Center

Did you know that there is a librarian available to assist you and your division colleagues? Contact them directly for quick assistance in finding the resources you need for your course design and delivery. Contact them directly for help.

- **IBIT:** Nicole Longpre at nicole.longpre@bellevuecollege.edu
- **Science:** Shahla Rowhani at shahla.rowhani@bellevuecollege.edu
- **Social Science:** Sayumi Irey at sayumi.irey@bellevuecollege.edu
- **Arts and Humanities:** David Oar at david.oar@bellevuecollege.edu and Cadi Russell-Sauve at cadi.russell-sauve@bellevuecollege.edu
- **Health Sciences:** Cadi Russell-Sauve at cadi.russell-sauve@bellevuecollege.edu

FACULTY COMMONS VISION

Provide knowledgeable **resources** and **services** to enhance professional development.

April 2014

SUN	MON	TUE	WED	THU	FRI	SAT
		1	2	3	4	5
6	7 <small>SPRING QTR BEGINS</small>	8	9	10	11	12
13	14	15	16	17	18	19
20	21	22	23	24	25	26
27	28	29	30			

May 2014

SUN	MON	TUE	WED	THU	FRI	SAT
				1	2	3
4	5	6	7	8	9	10
11	12	13	14	15	16	17
18	19	20	21	22	23	24
25	26 <small>HOLIDAY</small>	27	28	29	30	31

June 2014

SUN	MON	TUE	WED	THU	FRI	SAT
1	2	3	4	5	6	7
8	9	10	11	12	13	14
15	16	17	18 <small>Finals</small>	19 <small>Finals</small>	20 <small>Finals Qtr Ends</small>	21
22	23	24	25	26	27	28
29	30	June 20: Commencement				

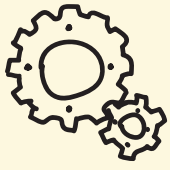
EVENTS CALENDAR

START DATE	SUBSEQUENT DATES	NOTES
April 7	Mondays: May 12, June 2	Aaron Hilliard, VP of Human Resources - Office Hours in the Faculty Commons
April 7	Meets weekly Mondays through June 16	Meditation Class
April 7	April 7–June 16	Teaching with Canvas: Canvas 101
April 8	Meets Weekly Tuesdays through June 17	Seeds of Hope Gardening Club with Karrin Peterson (open to all faculty and staff)
April 8	Meets Tuesdays: April 8, April 22, May 6, May 20, 6/3, 6/17	Critical Thinking Reading Discussion
April 9		UDL Brown Bag: Join us for Lunch!
April 9	Meets weekly Wednesdays through June 19	Online Teaching Best Practices Workshop
April 10 & 11		Part Time Faculty Orientaiton
April 16	Meets Wednesdays April 30, May 14, May 28, June 11	Teaching Strategies Discussion Group
April 16	May 19, June 10	President's Office Hours
April 29		UBI Interactive Smart Screen - Faculty Evaluation
April 21–25		Earth Week
April 22	May 13, June 10	Critical Conversations
April 30	May 7	Adjunct Faculty Support Hiring Workshop
April 24		Integrate Sustainability Workshop Presentations
April 24		Earth Week Teach Sustainability Social
April 24	May 22, June 19	Yoshiko Harden, VP of Equity and Pluralism - Office Hours in the Faculty Commons
April 25		How Your Students' Brain Works: A UDL Workshop
May 1	May 22, June 12	Positive Discipline Parenting Book Discussion
May 1		Embracing Neurodiversity in Higher Education: Overcoming Attitudinal Barriers for Individuals with Autism
May 7	June 4	UDL Discussion Group
May 8	May 15, May 22	Video Discussion: Unnatural Causes
May 8		BC Reads! Discussion Group
May 12		Streamline Routine Feedback with TypeltIn
May 13		Teaching With Prezi Screencasts Part 1
May 14		Faculty Commons Social Hour
May 20		Usability Testing: What are your online students really thinking and doing?
May 27		Teaching With Prezi Screencasts Part 2

EXTENDED AND ONGOING	NOTES
Ongoing	Resources Liaisons at the Library Media Center
Ongoing	Technology Help Desk
Ongoing	Technology Learning & Connection Center
Ongoing	Educational Equity Workshop for Tenure Candidates
Ongoing	Call for Summer/Fall Quarter 2014 Proposals
Application deadline: April 11	UDL Teaching Squares
Application deadline: April 11	Spring Quarter Teaching Squares will be Divisional Squares! (online and in-class)
Application deadline: Open until filled	Call for Mentors! Tenure Candidates Fall 14-Spring 15
Application deadline: Open until filled	Call for Mentees! Mentoring for Online Instructors Program
Ongoing	Wellness Center Activities for Students, Staff and Faculty.



Visit the Commons and participate in the Coffee Punch Card Program



ASSESSMENT, TEACHING AND LEARNING



Technology Help Desk One-stop for Technology Help and News

<http://depts.bellevuecollege.edu/helpdesk/>

(425) 564-HELP - Located in the N Building

Fall/Winter/Spring Quarter Hours

Monday thru Friday 7:00am – 7:00pm

Saturday and Sunday 9:00am – 6:00pm

Quarter Break Hours

Monday thru Friday 8:00am – 4:00pm

Technology Learning and Connections Center

Location: A109

Do you want to develop your technology skills?

Need help understanding how tools like Canvas, Office and other collaboration tools work? The Technology Learning and Connections Center mission is to serve the technology training needs of faculty and employees on campus. Check out their upcoming services:

Canvas Walk-in Help

Monday thru Friday .10:30am – 4:00pm

No registration required!!

Faculty to Faculty Support

Hours to be determined.

UDL Teaching Squares - Squares with a Twist

Most everyone loves teaching squares and there are plenty of comments like this one:

"...I have known that there isn't a 'one right way' to teach, but by truly being in the mindset of observing the learning process across the spectrum, I was able to actually see that truth. It was humbling to see such diversity in teaching and learning. Students appeared to be equally engaged in the learning process whether it was a predominantly lecture and question class or a less structured class dominated by classroom discussion."

Spring Quarter you can join fellow faculty members to observe and learn from one another in this non-evaluative process. The Twist? A Universal Design Cohort member will be there to facilitate how UDL can be implemented in the classroom. If you are curious about UDL, or are already implementing UDL, this is a great way to learn more and gather ideas on ways to structure one's class to provide support for success of all of your students.

Stipend: \$150 provided by the Office of Information Resources for all faculty members upon completion of reflection. Participation is limited to 20.

*To apply or for more information, contact:
Mandie Nash, Classroom Strategy Faculty Lead,
Faculty Commons, mandie.nash@bellevuecollege.edu*

Spring Quarter Teaching Squares (online and in-class)

This Quarter, find three fellow faculty from your Division and create a Divisional Teaching Square! Each of you will observe each other's courses and then meet as a group for reflection and discussion. Each participant will be required to submit a short reflection on the process. Teaching Squares is open to all faculty, part-time, full-time, on-the-ground, or online.

Stipend: \$150 for all faculty members upon completion of reflection. Participation is limited to 20.

Application deadline: April 11

*To apply or for more information, contact:
Mandie Nash, Classroom Strategy
Faculty Lead, Faculty Commons,
mandie.nash@bellevuecollege.edu*



Critical Thinking Reading Discussion

**Meets Tuesdays April 8, April 22,
May 6, May 20, June 3, June 17
1:30–2:30pm**

This group will focus on working through Mark Storey's Critical Thinking Text followed by other critical thinking readings as time permits.

REGISTRATION:

<https://adobeformscentral.com/?f=icNCsr8DpaSVdID6Em0Vug>

For more information contact Russ Payne Arts & Humanities wpayne@bellevuecollege.edu

FACULTY COMMONS VISION

Provide a sanctuary for
inspirational and
creative relationships and dialogue.



Teaching Strategies Discussion Group

Meets Wednesdays

April 16, April 30, May 14, May 28, June 11, 3:00–4:00pm

Join fellow faculty members to share experiences in the classroom. The discussion will be supplemented by journal readings pertinent to classroom strategies. Example topics include Decreasing Test anxiety in students, Creating a transformational classroom and improving retention rates. Other topics will arise in response to group discussions. So bring your ideas and enthusiasm for teaching to have an opportunity to reflect on your own teaching. Also learn from your peers and research in the field of Adult Education.

For more information, contact: Mandie Nash, Classroom Strategy Faculty Lead, Faculty Commons, mandie.nash@bellevuecollege.edu



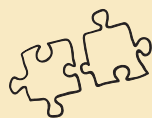
UDL Brown Bag: Join us for Lunch!

**April 9 & May 23
12:30–1:30pm**

Bring your lunch and join us for a casual conversation on Universal Design for Learning (UDL). We will share stories about teaching, about students and also about how UDL has helped some of us get to know our students' needs better. No registration required

For more information, please contact the UDL Cohort: <https://bc.instructure.com/courses/867370>

- Rashmi Koushik, Adult Basic Education
- Alice Jenkins, IBIT
- Howard Haemmerle, Science
- Mandie Nash, Math
- Aron Segal, Social Sciences, Accounting



UDL Discussion Group

Wednesday, May 7 &

Wednesday, June 4th, 3:00–4:00pm

Join UDL cohort members in discussing how UDL supports learning in all students as well as what you can do to implement UDL in your classroom. We will discuss techniques we have used in our classes and reflect upon ways participants can implement it in their own classroom.

For more information, contact: Mandie Nash, Classroom Strategy Faculty Lead, Faculty Commons, mandie.nash@bellevuecollege.edu



How Your Students' Brain Works: A UDL Workshop

DATE CORRECTION: A date change was made after the Faculty Commons spring schedule was printed. Correct information is below:

April 25, 2:30-4:00pm

Did you know that Individuals bring a huge variety of skills, needs, and interests to learning? Neuroscience reveals that these differences are as varied and unique as our DNA or fingerprints! Come learn about the three primary brain networks and how you can reach students who learn in different ways.

REGISTRATION:

<https://adobeformscentral.com/?f=icNCsr8DpaSVdID6Em0Vug>

For more information, please contact the UDL Cohort: <https://bc.instructure.com/courses/867370>

- Rashmi Koushik, Adult Basic Education
- Alice Jenkins, IBIT
- Howard Haemmerle, Science
- Mandie Nash, Math
- Aron Segal, Social Sciences, Accounting

TECHNOLOGY LEARNING & CONNECTION CENTER



SPRING QUARTER WORKSHOPS:

COMING SOON! Look for announcements in the weekly Canvas Support Notes email.

Canvas - Home Page and Syllabus: Get an overview of Canvas and the various Instructor tools available. Learn to setup your Home page, upload the course Syllabus, create an Announcements, upload, organize and lock files, and create modules.

Canvas - Assignments, Discussions & Quizzes: To assess student knowledge, learn to use Assignments, Discussions and Quizzes

Canvas - Using Multimedia: Participants will learn to use the Rich Content Editor for Graphics, Audio and Video, Create a Banner, use of Scribd and Crocdoc, insert Youtube and Camtasia Relay videos.

Canvas - Gradebook and SpeedGrader: Learn to Grade Assignments in the SpeedGrader and Gradebook, enter and edit scores in the Canvas gradebook, use the Rubric in SpeedGrader and leave feedback for students in SpeedGrader.

Canvas - Rubrics: Create multiple Rubrics and learn to import Rubrics from one Canvas Course to another.

Camtasia Relay (Screen Capture tool): Camtasia Relay is a screen capture tool that allows you to record the computer screen, audio and or video (via web cam) into a multimedia presentation.

Microsoft Office 2013: Preview the new features in Outlook, Word and PowerPoint.

Microsoft Lync 2013 (Online Meeting/Collaboration tool): Microsoft Lync provides a single interface on your computer that unites voice communications, instant messaging, and audio/video conferencing all at once. Lync is integrated with Outlook 2013.

Collaborate (Online Meeting/Collaboration tool): Online meeting tool built specifically for live, multi-media, many-to-many collaboration. It enables virtual real-time communication, collaboration, and education for staff, faculty and students. Learn to create online meetings, post online virtual office hours and collaborating on content with students and peers.

FACULTY COMMONS VISION

Serve as the **nexus** of meaningful faculty collaborations with all constituents on campus.

PROGRAMMING BY TYPE & COMMITMENT

Book Discussions

BC Reads	10
Positive Discipline Parenting	10

One Time Events

Part Time Faculty Orientation	2
Faculty Commons Social Hour	2
UBI Interactive Smart Screen - Faculty Evaluation	5
Streamline Routine Feedback with TypeltIn	5
Teaching With Prezi Screencasts Part 1....	5
Teaching With Prezi Screencasts Part 2....	5
Usability Testing: What are your online students really thinking and doing?.....	5
Technology Learning and Connections Center	8
UDL Brown Bag: Join us for Lunch!.....	9
UDL Discussion Group	9
How Your Students' Brain Works: A UDL Workshop	9
Integrate Sustainability Workshop Presentations	10
Earth Week Teach Sustainability Social ...	10
Embracing Neurodiversity in Higher Education.....	11

Quarter Long or More Workshops

Online Teaching Best Practices Workshop .	4
Teaching with Canvas: Canvas 101	4
UDL Teaching Squares - Squares with a Twist	8
Spring Quarter Teaching Squares, (online and in-class)	8
Critical Thinking Reading Discussion	8
Educational Equity Workshop for Tenure Candidates.....	11
Technology Help Desk One-stop for Technology Help and News	8

Series of two days or more

President's Office Hours.....	1
Vice President's Office Hours	1
Adjunct Faculty Support Hiring Workshop	3
Canvas Walk-in Help:	8
Faculty to Faculty Support	8
Teaching Strategies Discussion Group.....	9
Earth Week.....	10
Critical Conversations.....	11
Video Discussion: Unnatural Causes.....	10

SUSTAINABILITY



Earth Week

April 21–April 25

In the spirit of environmental literacy, we present the fifteenth annual Earth Week – a week of lectures, demonstrations, information booths, prizes, videos, and music!

See the complete schedule at bellevuecollege.edu/sustainability/we/earthweek/

*For more information, contact:
Deric Gruen, Office of Sustainability,
deric.gruen@bellevuecollege.edu*



Integrate Sustainability Workshop Presentations

Thursday, April 24, 1:30–3:30pm

Come see the final presentations of participants in this workshop and get ideas for your sections. The goal of the workshop is to enrich teaching through the design of teaching materials, assignments and outcomes that infuse sustainability related concepts and principles.

*For more information, contact:
Amanda Senft, Sustainability Workshop Lead
at amanda.senft@bellevuecollege.edu*

Stipend Opportunities

Part Time Faculty Orientation	2
Call for Tenure Candidate Mentors for Fall 2014– Spring 2015	3
Call for Mentees! Mentoring for Online Instructors Program	3
Online Teaching Best Practices Workshop .	4
UDL Teaching Squares - Squares with a Twist	8
Spring Quarter Teaching Squares, (online and in-class)	8
Video Discussion: Unnatural Causes.....	10



Earth Week Teach Sustainability Social

Thursday, April 24, 3:30–4:30pm

Faculty teaching or interested in teaching sustainability as well as staff and administration interested in sustainability in the curriculum are invited to celebrate Earth Week and the the conclusion of the Integrating Sustainability Workshop for the academic year.



Video Discussion: Unnatural Causes

**Meets Thursdays, May 8, May 15,
May 22, 1:30–3:00pm**

On PD Day, keynote speaker Dr. Jeff Duncan Andrade recommended the documentary series Unnatural Causes: Is Inequality Making Us Sick? This documentary shows at how class and race may greater impacts on our health outcomes than genetics or personal behavior. Let's watch this documentary together and consider how it relates to sustainability, to our campus, and to our classroom.

\$100 stipend for faculty who attend all sessions and complete all activities.

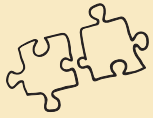
*For more information, contact: Lisa Harris,
lisa.harris@bellevuecollege.edu*

Other Services

Meditation Class with Ewan Magie (open to all faculty and staff)	2
Seeds of Hope Gardening Club with Karrin Peterson (open to all faculty and staff)	2
Wellness Center Activities for Students, Staff and Faculty.	2
Resources Liaisons at the Library Media Center.....	5

Position Openings

Call for Tenure Candidate Mentors for Fall 2014– Spring 2015	3
Call for Mentees! Mentoring for Online Instructors Program	3



Critical Conversations

**3 part series meets Tuesdays on
April 22, May 13, June 10
1:45-3:00pm**

This is a monthly opportunity to talk with your colleagues about cultivating more inclusive classrooms. Specific topic/agenda will be later announced.

REGISTRATION:

<https://adobeformscentral.com/?f=icNCsr8DpaSVdID6Em0Vug>

Lori Saffin, lori.saffin@bellevuecollege.edu



Educational Equity Workshop for Tenure Candidates

This educational equity workshop will support faculty, tenure candidates, TES committees and other faculty leaders' success. There are two pilot workshops Spring Quarter. The ongoing pilot workshop will work with 2nd and 3rd year tenure candidates in an effort to support student success and faculty retention. After the opportunity to create bonds with our learning community, the workshop will continue throughout the academic year, with bi-monthly sessions that allow us time to learn, discuss, experience, and come to a greater awareness of the diversity of our greater campus community

For more information, contact: Yoshiko Harden, Vice President, Office of Equity and Pluralsim, yoshiko.harden@bellevuecollege.edu



Embracing Neurodiversity in Higher Education: Overcoming Attitudinal Barriers for Individuals with Autism

**Thursday, May 1
1:00 to 4:00 p.m. in D104**

You're invited to an interactive presentation featuring Karen M. DeYoung, M.A. Ed., Antioch University. Neurodiverse students face multiple barriers to access and success in post-secondary education. Individual attitudes, perspectives and knowledge are at the root of these barriers, including structural and systemic barriers created when there is a lack of awareness and/or acceptance of difference. Attend this interactive presentation to:

- Learn greater awareness of the unique strengths and challenges of college students with autism/Asperger's Syndrome.
- Learn about the barriers that autistic students face on a daily basis.
- Develop an understanding of what it means to be a "neurodiverse" person in a "neurotypical" world

Discuss low impact strategies and suggestions for facilitating positive interactions between neurodiverse students and faculty, staff, administrators, service providers and others.

REGISTRATION:

<https://adobeformscentral.com/?f=icNCsr8DpaSVdID6Em0Vug>

For more information, contact: Sara Gardner, sara.gardner@bellevuecollege.edu

Serve as the
nexus of
meaningful faculty
collaborations
with all constituents
on campus.

FACULTY COMMONS VISION

Create a supportive
community that
nurtures
grassroots
innovation
and initiatives.

FACULTY COMMONS VISION

Seek **efficient**
and
collaborative
solutions that
support
constituents.

the FACULTY COMMONS

is...

SPRING SCHEDULE CONTRIBUTORS

FACULTY COMMONS COUNCIL

Doug Brown
FACULTY ASSOCIATION PRESIDENT/
NON-VOTING MEMBER OF
FACULTY COMMONS COUNCIL

Mary Corcoran
Jacqueline Drak
Kelly Elsenbaumer

Maggie Harada
A&H DEAN

Elizabeth Harazim

Lisa Harris

Leslie Heizer Newquist
INTERIM DEAN FOR HSEWI

Sayumi Irey, CHAIRPERSON

Denise Johnson

Suzy Lepeintre

Jocelyn Ludlow

Steven Martel

Jennie Mayer

Tom Nielsen
VICE- PRESIDENT OF INSTRUCTION

Julia Paulsen

Russ Payne

Grace Robbings

Ron Taplin

NOT PICTURED:

Dave Rule
PRESIDENT
Yoshiko Harden
VICE PRESIDENT OF EQUITY & PLURALISM

Aaron Hilliard
VICE PRESIDENT OF HUMAN RESOURCES

Susan Miller
Sabrina Sanchez

Grace Robbings

Mandie Nash

Linda Walker

UDL Cohort:

Rashmi Koushik, Adult Basic Education

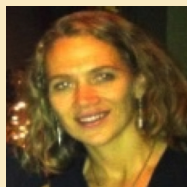
Alice Jenkins, IBIT

Howard Haemmerle, Science

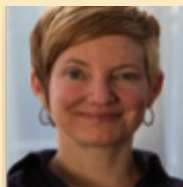
Mandie Nash, Math

Aron Segal, Social Sciences, Accounting

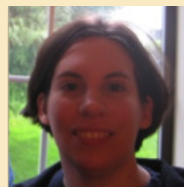
Faculty Assessment Coordinating Team (FACT)



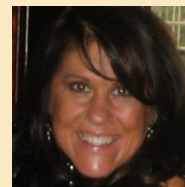
Marika Reinke,
Director,
Faculty Commons



Catherine Berkenfield



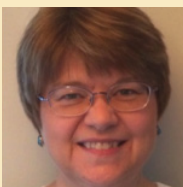
Amanda Senft



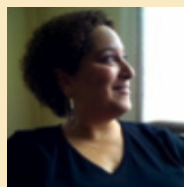
Julie Griffin



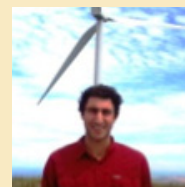
Bruce Wolcott



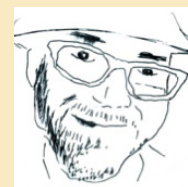
Wilma Dougherty



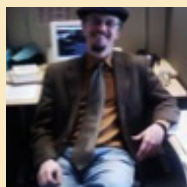
Kim Pollock



Deric Gruen



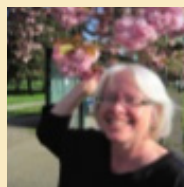
Keith Rowley



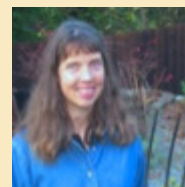
Ewan Magie



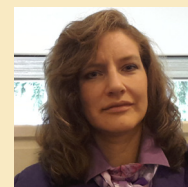
Ron Austin



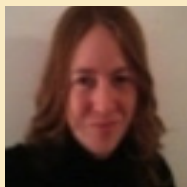
Julia Paulsen



Karrin Peterson



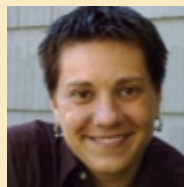
Ann Minks



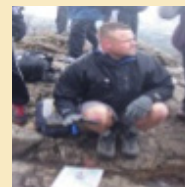
Lisa Harris



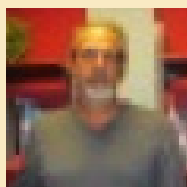
Sara Gardner



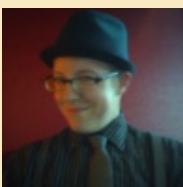
Lori Saffin



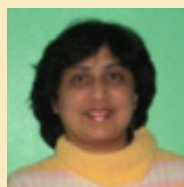
Peter Prescott



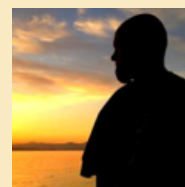
Russ Payne



Colin Donovan



Sukirti Ranade



Jim Dicus

and **YOU**