

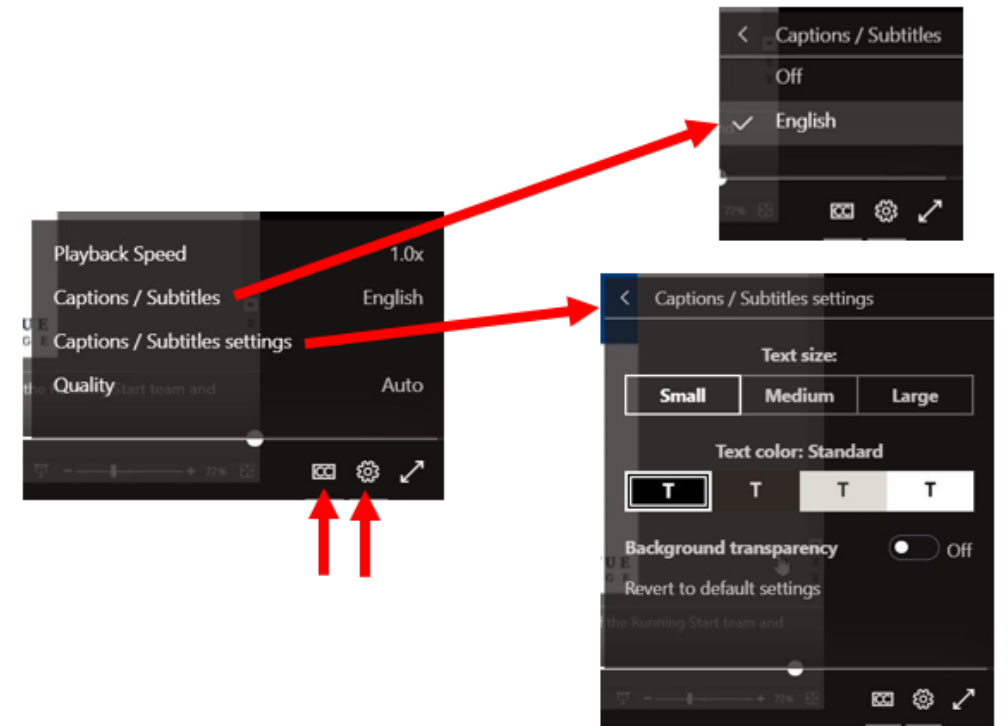
Your Degree Options at Bellevue College

The event will begin at 6:00pm

- Please take a few minutes to watch the video linked in the announcements
- Submit your questions to the Q&A box

Captions & Subtitles

- At the bottom of your screen, in the right corner, you can turn on Closed captioning by clicking the CC icon.
- You can click the Settings icon to you can turn on Captions/Subtitles and select the language.
- You can also adjust the settings of the Captions/Subtitles.



Your Degree Options at Bellevue College

Wednesday March 17th at 6:00pm

Beyond High School Virtual Series Event 2020-2021

Hosted by Center for High School Programs at Bellevue College

Presenter: Erica Walker, Running Start Advisor

Erica.walker@bellevuecollege.edu

Introductions

Erica Walker

- **Running Start Advisor** since February 2020
- Bachelor's in Arts
 - Major: Psychology, Spanish
 - Minor: Education
- 5 years of experience supporting High School students apply to college!

Erica.walker@bellevuecollege.edu

Agenda

- What's the difference?
- Certificates
- Associates
 - Transfer degrees
 - Professional/Technical degrees
 - Concentrations
- Bachelors
 - Applied degrees
 - Nesting of degrees
- Navigating BC website
- Center for HS Program students
- Contact Us

In the Q&A box:
Are you considering
earning a degree at BC?

Degrees & Certificates at Bellevue College

Certificates → Skills building

Associate Degrees → College or Career

Bachelor's Degrees → Career or Continued Education

Degrees and certificates vary by credit amount and time.

**Bachelor's
Degrees:**
180 credits
4 years +

**Associate
Degrees:**
90 credits +
2 years +

**Certificate of
Achievement:**
45-89 credits

**Certificate of
Accomplishment:**
20-44 credits

**Certificate of
Completion:**
19 credits or less

Certificates

➔ <https://www.bellevuecollege.edu/programs/degrees/>

Certificates

- Earn a set of skills to find a job or stay current in your profession.
- Stackable Certificates can build on top of each other and eventually lead to a longer-term certificate or degree. Certain certificates are also part of nested programs towards earning a Bachelor's degree.

Source: <https://www.sbctc.edu/becoming-a-student/right-degree-you/types-of-degrees.aspx>

Bellevue College offers many certificates for various professional and technical fields. Lets look at some examples:

- [Nursing Assistant Certified Certificate of Completion](#)
- [Game Design Certificate of Accomplishment](#)
- [Medical Administrative Assistant Certificate of Achievement](#)

Associate Degrees

➔ <https://www.bellevuecollege.edu/programs/degrees/>

University

Transfer Associate Degrees



Career

Professional/Technical
Associate Degrees

Transfer Associate Degrees

- Meant for students who intend to go to a 4-year institution and complete a *Bachelors degree*
- Help students to complete General Education Requirements of your Bachelors degree (typical first two years of degree)
- **Apply to a 4 year as a first-year or a transfer student** and apply 90 credits to your Bachelors degree. *Junior standing!*
 - First year applicant = applying while a Senior in HS
 - Transfer applicant = applying after HS graduation
- Can help students complete prerequisites for certain majors; **Major ready!**
 - Visit the 4-year schools website to learn about specific major prerequisites/requirements

Transfer Associate Degree Types

Associates of Arts and Sciences Direct Transfer Agreement (AAS-DTA)

- The **Direct Transfer Agreement (DTA)** guarantees that all 90 credits of this degree will transfer to a 4-year institution in WA state
- Option to earn an Academic Concentration with this degree
- Most popular transfer degree, best fit for many High School students enrolled at BC

Major Related Program (MRP)

- Helps students to be major ready for specific majors such as Business, Math Education, or Music
- Only transferable with institutions BC has a partnership with

Science Track I & II

- Complete many of the **math and science-related prerequisites**
- Track I: Biological and Environmental/resource sciences, Geology and Earth Science or Chemistry.
- Track II: Engineering, Computer Science, Physics or Atmospheric Science.

<https://www.sbctc.edu/becoming-a-student/right-degree-you/types-of-degrees.aspx>

Transfer Degrees at Bellevue College

Associate in Arts &
Sciences Degree

AAS-DTA

Direct Transfer Agreement

Associate in
Business

AB-DTA/MRP

Major Related Program

Associate in Math
Education

AME-DTA/MRP

Associate in Music

DTA/MRP

Science Track I: AS

Biological, Environmental/
Resources, Chemistry,
Earth Sciences

Science Track II: AS

Engineering MPR*
Chemical and Bio
Engineering

Science Track II: AS

Engineering MRP* Civil,
Mechanical and Other
Engineering

Science Track II: AS

Engineering MRP*
Electrical and Computer
Engineering

Science Track II: AS

Physics, Atmospheric
Sciences and Engineering

Academic Concentrations with AAS-DTA

- Students can focus on one area of study and earn an **Academic Concentration on top of an AAS-DTA**.
- Each concentration is at least **20 credits** (four 5-credit courses) from a **specific list of courses** provided by department.
- Academic concentrations are **only available if department approved** (students cannot create their own). Listed on department webpage.

Criminal Justice Concentration

Academic Concentrations with AAS-DTA

- Anthropology
- Criminal Justice
- Communication Studies
- Cultural Ethnic Studies
- Gender Studies
- Geography
- History
- Mathematics
- Political Science
- Psychology
- Sociology
- Sustainability
- Theatre Arts/Drama

https://catalog.bellevuecollege.edu/preview_program.php?catoid=6&pid=1614&print

Professional/Technical Associate Degrees

- Train for a **specific career field** and go directly to your career.
- This degree is not designed to transfer, with the exception of Associate in Applied Science-Transfer degrees and institution partnerships.
 - *For example: If you plan to earn a Bachelors degree at Bellevue College then you would find the Professional/Technical AA degree that is paired with that Bachelors degree.*

Professional/Technical Associate Degrees

Associate of Arts (AA)

- Non-Transferable; meant for straight to career/employment
- Example: Business Management, AA

Associate of Applied Sciences Transfer degrees (AAS-T)

- These degrees are designed for the dual purpose of immediate employment and preparation for the junior year in a Washington state bachelor of applied science (BAS) degree program.
- **Only transferable to a community college or partner institution**
- If you are planning to stay at BC and complete one of our Bachelor's degrees then you might be required to complete an AAS-T first
- Example: Business Management, AAS-T

Bachelors Degrees

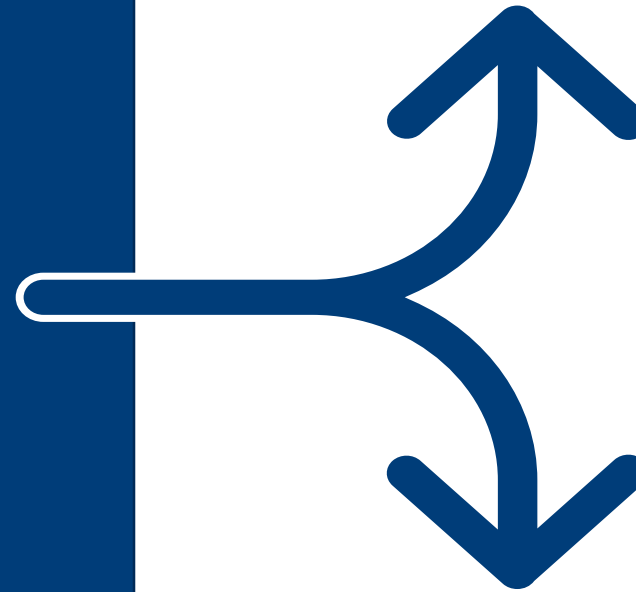
➔ <https://www.bellevuecollege.edu/programs/degrees/>

Bachelors Degree

Bachelor's of Arts/Science
OR

Bachelor's of Applied Arts/Science

Career



Continued Education

Masters or Doctorate Degree

Bachelor's Degree

Bachelors of Arts or Science (BA/BS) or Applied Bachelors Degrees (BAA/BAS)

- Either for career or further education (masters or doctorate degree)
- Student selects a major of study, option to select a minor or double major!
- Opens doors to more job opportunities and higher pay

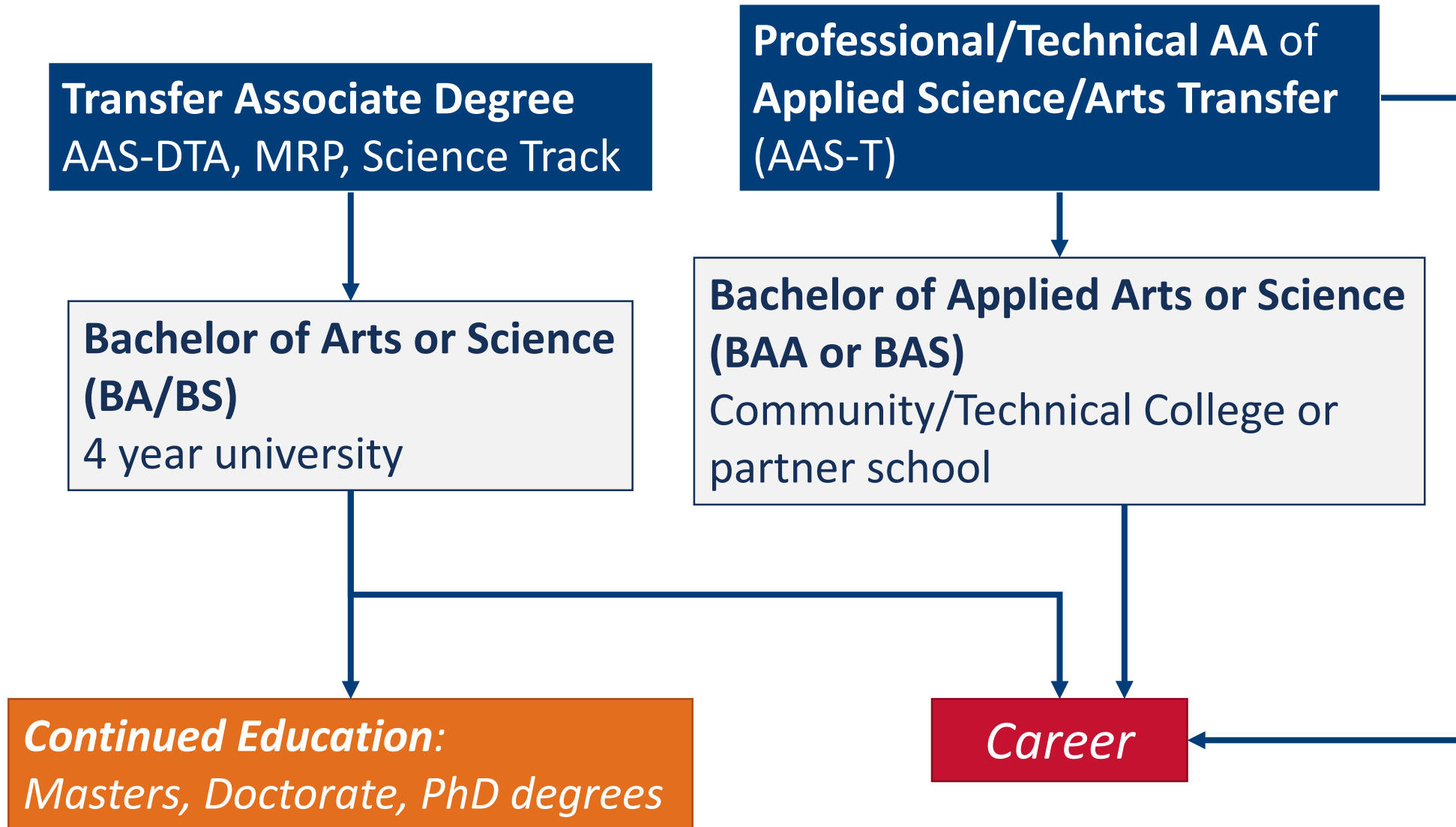
At Bellevue College we offer bachelor's degrees through our college and through our partnerships with: Eastern Washington University, University of Washington, Washington State University

The Degrees we offer:

- Bachelor of Science
- Bachelor of Applied Science
- Bachelor of Applied Art
- Bachelor of Science in Nursing
- Bachelor of Applied Technology

Bachelors Degree Options

3/18/2021



Applied Bachelors Degrees

Earn a professional/technical applied AA degree and use it towards an **Applied Bachelors Degrees** which are now commonly **offered at many Community Technical Colleges.**

BAS, Bachelor of Applied Science.

- An applied science degree prepares students to start a career right after graduation.
- The word "science" does not necessarily mean that the program is related to a field of science like geography or biology.

12 Bachelor's Degree Programs at BC

Applied
Accounting, BAS

Computer
Science, BS

Data Analytics, BC

Digital Marketing,
BAS

Health and
Wellness, BAS

Healthcare
Informatics, BAS

Healthcare
Management and
Leadership, BAS

Information
Systems and
Technology, BAS

Interior Design,
BAA

Molecular
Biosciences, BAS

Nursing, RN to
BSN

Radiation and
Imaging Science,
BAS

12 Bachelor's Degree Programs at BC

Applied
Accounting, BAS

Computer
Science, BS

Data Analytics,
BAS

Digital Marketing,
BAS

Health and
Wellness, BAS

Healthcare
Informatics, BAS

Healthcare
Management and
Leadership, BAS

Information
Systems and
Technology, BAS

Interior Design,
BAA

Molecular
Biosciences, BAS

Nursing, RN to
BSN

Radiation and
Imaging Science,
BAS

Nested Degree Programming

BC programs are nested

For example: There are Accounting certificates that you can start with, take more classes and get the AA in Applied Accounting, then take even more classes (once you're accepted!) for the BAS in Applied Accounting.



Center for HS Programs Students

- **Transfer AA degree** best for students applying to 4-year schools
 - **AAS-DTA often the best fit**
 - Courses taken at BC for your high school graduation requirements
 - 4-year university pathway; Save time and money on your Bachelors degree
 - Flexibility when it comes to class choice
- Some students are able to complete the **Transfer Degree in Business or Science tracks** however it is less flexible and **requires higher levels of math and science** – meet with an advisor!
 - Pre Calc for Business Transfer
 - Calc for Science track

Questions?

Submit your questions at this time to the Q&A box

Center for High School Programs

- **Returning Student inquires:** chsprograms@bellevuecollege.edu
- **New RS Student inquiries:** runningstartnewstudent@bellevuecollege.edu
- **Front Desk Phone Number:** (425)564-2026

Meet with an advisor from your Program to find the best degree option for you!

- [Running Start](#)
- [CEO / LIP](#)
- [College in the High School](#)

Thank you for joining us!

PDF of presentation will be emailed to attendees