

## What is Anthropology?

Anthropology is the study of human life. It includes the study of being human and cultures of the world both now and in the past, questioning human origins and human nature through a biological, social and cultural perspective. The study of Anthropology is scientific and humanistic with application to real-world problems. Anthropology has 4 subfields:

- ◆ **Archaeology** (past human civilizations/history)
- ◆ **Cultural** anthropology (human societies)
- ◆ **Biological** anthropology (human evolution)
- ◆ **Linguistic** anthropology (language)

## Which Degree do I Begin with?

- Complete the Associate in Arts & Sciences Direct Transfer Agreement (AAS-DTA).
- Students have the option to complete an “academic Concentration in Anthropology” by completing 20 credits of anthropology required for the concentration. Then concentration will be specifically noted on the transcript and the AAS-DTA degree.

## What Are Some Common Prerequisites that I’ll Need to Take Here?

Every university and major concentration will require slightly different prerequisites. It is **highly recommended** that you speak with a representative at the target university in conjunction with an academic advisor here at BC to ensure that you are taking the proper courses. Double-checking requirements is as easy as going to the university department website. Below is a general guide to the courses **recommended** and the areas of study they fulfill on the DTA for students interested in a **Anthropology** major (this is not an official list):

Written Communication	Mathematics	Major Specific	Other Recommended Courses
<ul style="list-style-type: none"> <li>• ENGL&amp; 101†</li> <li>• ENGL&amp; 201†</li> </ul>	<ul style="list-style-type: none"> <li>• MATH 138† OR</li> <li>• MATH&amp; 151†</li> </ul>	<ul style="list-style-type: none"> <li>• ANTH&amp; 100†</li> <li>• ANTH&amp; 204</li> <li>• ANTH&amp; 206</li> <li>• ANTH&amp; 208</li> <li>• ANTH&amp; 215</li> </ul>	<ul style="list-style-type: none"> <li>• CES 180</li> <li>• CMST 280</li> <li>• HIST 101†</li> <li>• SOC&amp; 101</li> <li>• Any GEOG</li> <li>• Foreign language*</li> </ul>

†: Recommended during the first year of study.

### Important notes about class selection above:

1. Many Anthropology programs have prerequisites. Please check with the major-specific website or an advisor at your target university or universities to learn about other important prerequisites.
2. Math requirements may differ for a Bachelor of Arts (BA) or a Bachelor of Science (BS) degree. Check with your target university for recommendations. BA 240 (statistical analysis) may be a prerequisite for some university programs.

Check your degree progress!  
Log into degree audit at:  
<http://bellevuecollege.edu/degreeaudit/>

\* Foreign language requirement: *Strongly recommended*-3 quarters (15 credits) of the same college-level language OR 3 years of high school foreign language. Please note that this is not necessarily a requirement at all universities. Please check the admissions/graduation requirements at your target universities.

### Course Planning Notes

Use the space below to write down a course sequence for this school year. Remember to maintain balance each quarter (i.e. try not to take all sciences or all writing-based classes in a single quarter). Also, keep in mind that 12 credit hours or more is considered full time; make sure to balance class load with your personal and/or work life. This is not an official educational plan— you should see an academic advisor if you have questions about course selection.

SUMMER		FALL		WINTER		SPRING	
COURSE	CREDITS	COURSE	CREDITS	COURSE	CREDITS	COURSE	CREDITS
TOTAL QTR. CREDITS		TOTAL QTR. CREDITS		TOTAL QTR. CREDITS		TOTAL QTR. CREDITS	

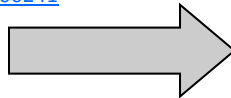
## Beyond BC with a Anthropology Degree!

Anthropology has been termed the “Social Science for the 21st Century”. An undergraduate degree in Anthropology will enrich your perspective and will help you better understand ways in which to live together in today’s modern world. An education in anthropology provides an excellent liberal arts background for many professions. Below are a few examples of career opportunities:

*Archaeologist, museum curator, forensic specialist, primatologist, linguist, government service, international business, law enforcement, researcher, consultant, lawyer, private and non-profit organizations, journalism, urban planning, and more!* Anthropology is also an excellent major for graduate studies in forensics, social work, psychology, sociology, communications, ethnic studies, gender & women’s studies, and urban planning.

For more career information visit **WOIS/The Career Information System-** <https://www.wois.org/use/careers/viewer.cfm?occnum=100241>

**Select Washington universities which offer a degree in Anthropology.**



**Central Washington University (BA or BS)**  
**Eastern Washington University (BA)**  
**Evergreen State University**  
**Pacific Lutheran University (BA)**  
**Saint Martin’s University (BA)**  
**Seattle University (BA)**  
**University of Puget Sound (BA)**  
**University of Washington-Seattle (BA)**  
**Washington State University (BA)**  
**Western Washington University (BA or BS)**

## Here’s the Scoop! Considerations for this Major:

- Programs will differ from university to university; for example, some will not offer a Bachelor of Science (BS) in Anthropology.
- Know the school’s admission requirements, expectations, deadlines, and areas of specialization.
- Attend the information sessions offered by the universities.
- Most universities have admission and exit foreign language policies; know what they are so you don’t miss the graduation requirements.
- Apply to more than one university and have more than one back-up plan.
- It is important to have some background or experience in one of the fields of Anthropology to strengthen your university application. You may consider fieldwork, internships or cultural exchanges.

## Who To Contact for more Information:

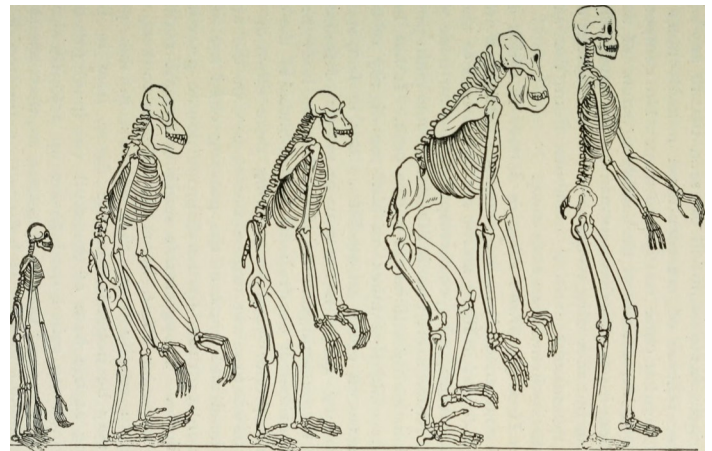
Bellevue College has a variety of friendly faces and resources to help you plan and register for classes.

**New to Bellevue College?** Connect with BC’s Welcome Center via [www.bellevuecollege.edu/welcome/](http://www.bellevuecollege.edu/welcome/) or email [welcome@bellevuecollege.edu](mailto:welcome@bellevuecollege.edu)

**Currently Taking Classes?** Connect with the Academic Advising Department via [www.bellevuecollege.edu/advising/](http://www.bellevuecollege.edu/advising/) or call **425-564-2212**.

Anthropology is part of the Social Science division. In order to make an appointment with an academic or faculty advisor, call **425-564-2331** or **425-564-2212**.

**Looking for specific Career Information?** Connect with the Center for Career Connections via [www.bellevuecollege.edu/careers/](http://www.bellevuecollege.edu/careers/) or call **425-564-2279**.



**This is an unofficial guide only, designed to prepare students for entry into Washington State programs. It is the student’s responsibility to research and communicate with all community college and university programs to which he/she intends to apply to establish prerequisites and admission requirements, as they vary and are subject to change without notice .**

Bellevue College does not discriminate on the basis of race or ethnicity; creed; color; national origin; sex; marital status; sexual orientation; age; religion; genetic information; the presence of any sensory, mental, or physical disability; or veteran status in educational programs and activities which it operates. Bellevue College is prohibited from discriminating in such a manner by college policy and by state and federal law. All college personnel and persons, vendors, and organizations with whom the college does business are required to comply with applicable federal and state statutes and regulations designed to promote affirmative action and equal opportunity. Please visit <https://www.bellevuecollege.edu/equal/>