

What is Psychology?

Psychology is the scientific study of behavior and mental processes. It is a science of conducting research and understanding behavioral data as well as a profession that requires on to apply special knowledge, abilities and skills to solve human problems. Psychologists study a wide range of human and animal behavior ranging from child development t abnormal behavior; from brain functioning to personality measurement. Psychology typically focuses on the individual and the psychological, cognitive, and social processes that impact the individual’s behavior.

Which Degree do I Begin with?

- You will want to complete the Associate in Arts and Sciences Direct Transfer Agreement (AAS-DTA) at BC.
- Students completing the AAS-DTA may choose to also complete an “Academic Concentration in Psychology” by completing specific coursework in Psychology: <https://www.bellevuecollege.edu/psych/concentration/>
- Once students transfer to a university they may study Psychology as a major and pursue wither a Bachelor of Arts (BA) or a Bachelor of Science (BS).
- If students choose to go on to graduate school for Psychology, they will need to take the Graduate Record Exam (GRE).

What Are Some Common Prerequisites that I’ll Need to Take Here?

Every university and major concentration will require slightly different prerequisites. It is **highly recommended** that you speak with a representative at the target university in conjunction with an academic advisor here at BC to ensure that you are taking the proper courses. Double-checking requirements is as easy as going to the university department website. Below is a general guide to the courses **recommended** and the areas of study they fulfill on the DTA for students interested in a Psychology major (this is not an official list):

Written Communication	Mathematics	Psychology	Sciences	Recommended Courses
<ul style="list-style-type: none"> • English 101† • English 201† 	<ul style="list-style-type: none"> • Math 138† OR Math 151† 	<ul style="list-style-type: none"> • Psychology 100† • Psychology electives 	<ul style="list-style-type: none"> • Biology 108† • Psychology 202 	<ul style="list-style-type: none"> • Sociology • Anthropology • Communication Studies

†: Recommended during the first year of study.

Important notes about class selection above:

- 1) UW Seattle has very specific Psychology prerequisites and graduation requirements for the Psychology program. Many of which a student can complete at BC while satisfying degree requirements for the AAS-DTA.
 - Math 138** is a prerequisite for the Bachelor of Arts (BA) program
 - Math 151** is a prerequisite for the Bachelor of Science (BS) program
 - Psychology 100, 202, and 209** are prerequisites for UW Seattle
 - Biology 108** is a graduation requirement for UW Seattle. It is recommended that Biology 108 is taken *before* Psychology 202.
- 2) It is recommended that you complete **English 201** (The Research Paper) prior to **Psychology 209** (Principles of Psychological Research).
- 3) Philosophy 120 (Symbolic Logic) is a graduation requirement at UW Seattle for the Bachelor of Science in Psychology degree.

Check your degree progress!
Log into degree audit at:
<http://bellevuecollege.edu/degreeaudit/>

Course Planning Notes

Use the space below to write down a course sequence for this school year. Remember to maintain balance each quarter (i.e. try not to take all sciences or all writing-based classes in a single quarter). Also, keep in mind that 12 credit hours or more is considered full time; make sure to balance class load with your personal and/or work life. This is not an official educational plan– you should see an academic advisor if you have questions about course selection.

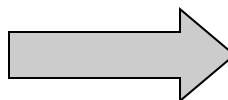
SUMMER		FALL		WINTER		SPRING	
COURSE	CREDITS	COURSE	CREDITS	COURSE	CREDITS	COURSE	CREDITS
TOTAL QTR. CREDITS		TOTAL QTR. CREDITS		TOTAL QTR. CREDITS		TOTAL QTR. CREDITS	

Beyond BC with a Psychology Degree!

Psych majors get an outstanding background of transferable skills that prepares them for any career they choose to pursue. Many careers in the field of Psychology require additional education beyond the bachelor's degree, specifically for those students interested in counseling or research. To be a professional Psychologist, a student must obtain at least a master's degree in the field. Career possibilities exist in Education, Organizational and Industrial Consulting, Marketing and Advertising, Research, Human Resources, Criminal Justice, Social Services, and Mental Health Counseling.

For more career information please visit **WOIS/The Career Information System-**
<https://www.wois.org/use/careers/viewer.cfm?ocnum=100428>

Select Washington universities which offer a degree in Psychology



Antioch University
Argosy University
Bastyr University
Central Washington University
City University
Eastern Washington University
Eastern Washington University @ Bellevue College
Gonzaga University
Northwest University
Pacific Lutheran University
Seattle Pacific University
University of Washington (Bothell, Seattle, Tacoma)
Washington State University
Western Washington University

Here's the Scoop! Considerations for this Major:

- Psychology is considered a competitive major at most universities.
 - You'll want to discuss prerequisite requirements and transfer program options with your advisor as soon as possible.
 - Check with each university you're interested in for the recommended/competitive GPA requirements.
- Research different program options at the universities you are interested in; for example, some will not offer a Bachelor of Science in Psychology (BS).
- Know the school's admission requirements, expectations, deadlines, and areas of specialization.
- Attend the information sessions offered by the universities.
- Most universities have admission and exit foreign language policies; know what they are so you don't miss the graduation requirements.
- Apply to more than one university and have more than one back-up plan.
- Participate in internships, field experience, faculty-student research (usually during undergraduate studies), or volunteer for service learning opportunities in areas of their interest.
- Become an active member of Psy Chi (the International Honor Society in Psychology) or the Psychology Club at BC.

Who To Contact for more Information:

Bellevue College has a variety of friendly faces and resources to help you plan and register for classes.

New to Bellevue College? Connect with BC's Welcome Center via www.bellevuecollege.edu/welcome/ or email welcome@bellevuecollege.edu

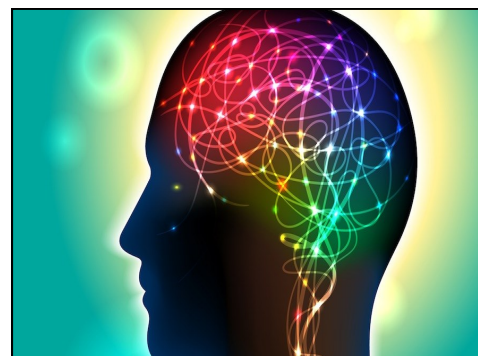
Currently Taking Classes? Connect with the Academic Advising Department via www.bellevuecollege.edu/advising/ or call **425-564-2212**.

Psychology is part of the Social Science division. In order to make an appointment with an academic or faculty advisor, call **425-564-2331** or **425-564-2212**.

Looking for specific Career Information? Connect with the Center for Career Connections via www.bellevuecollege.edu/careers/ or call **425-564-2279**. Additional career information can be found at <https://www.wois.org/use/careers/>

This is an unofficial guide only, designed to prepare students for entry into Washington State programs. It is the student's responsibility to research and communicate with all community college and university programs to which he/she intends to apply to establish prerequisites and admission requirements, as they vary and are subject to change without notice .

Bellevue College does not discriminate on the basis of race or ethnicity; creed; color; national origin; sex; marital status; sexual orientation; age; religion; genetic information; the presence of any sensory, mental, or physical disability; or veteran status in educational programs and activities which it operates. Bellevue College is prohibited from discriminating in such a manner by college policy and by state and federal law. All college personnel and persons, vendors, and organizations with whom the college does business are required to comply with applicable federal and state statutes and regulations designed to promote affirmative action and equal opportunity. Please visit <http://www.bellevuecollege.edu/equal.asp>.



Join the Psychology Club! For club meeting times and locations stop by the Student Programs office right above the Cafeteria in C Building!