

FALL SUSTAINABILITY SERIES 2021

The annual Fall Sustainability Series is right around the corner!

Join us in exploring sustainability and social justice topics while getting to know fellow students, faculty, and staff interested in sustainability and learn about how you can get involved on and off campus. While we are currently finalizing this year's series of events, here's a sneak peak of some highlights. Be sure to check our website, our Facebook page, and BC FYIs for announcements on events and how to get involved.

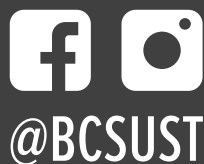
Menstrual Product Drive and Menstrual Cup Giveaway (sign-up Oct. 11th to Oct. 24th, with pickup Nov. 3rd)- The Office of Sustainability is on a mission to make menstrual products free and accessible to our campus. Our menstrual product dispensers can be found across campus with free menstrual products for you to use. The program runs 100% on donations and we need your support once again to keep this program going. While in the past we had donation bins all around campus, we will be approaching it differently this time with a one day contact-less drop-off. We accept all types, kinds, brands of products, and even opened boxes. In addition to the donation drive, we also are excited to announce a new program and partnership with AllMatters. This program provides FREE menstrual cups to any Bulldog that signs up in advance. We will be handing out the menstrual cups the same day as the donation drive to those who signed up.

If we're not running a drive, we still accept donations. Email us at sustainability@bellevuecollege.edu to set up a pick up or drop off on campus.

Community Supported Agriculture Boxes (Oct. 19th)- Our popular Community Supported Agriculture boxes are back! Come get your local, fresh and organic produce all while supporting farmers in the Puget Sound region. Produce comes in our fun, custom BC Farm Market reusable bag. Be sure to keep an eye out for our sign-up announcement to reserve your box, they sell out extremely fast.

Beeswax Wrap Workshop (Nov. 18th)- Ditch the plastic and learn how to make a sustainable beeswax wrap. Use this reusable wrap to keep your food covered and fresh. We'll send you all the supplies you need, just follow along with our workshop to learn how to make your very own natural plastic-alternative beeswax wraps!

Don't miss out, make sure to check our website for details on these events and others in the Fall Sustainability Series including a climate rally, a documentary screening and a plogging community activity.



Greenhouse Gas Reporting at BC

Bellevue College is a signatory to the Second Nature Presidents' Climate Commitments, which showcases to our community that sustainability is important to our college leadership. It sets the goals that we must strive to achieve, and provides a network to compare to our higher education peers.

BC along with the other signatory institutions report on their yearly progress through the Reporting Platform, publicly sharing their climate action plans, greenhouse gas inventories and more.

As part of this, every year the Office of Sustainability collects data from across campus and tracks the greenhouse gas emissions associated with our school operations and activities, and provides a data-based snapshot of progress towards our carbon emissions and carbon neutrality goals.

Currently we use a platform created by University of New Hampshire called the Sustainability Indicator Management & Analysis Platform (SIMAP). SIMAP® is a carbon and nitrogen-accounting platform that can track, analyze, and improve campus-wide sustainability.

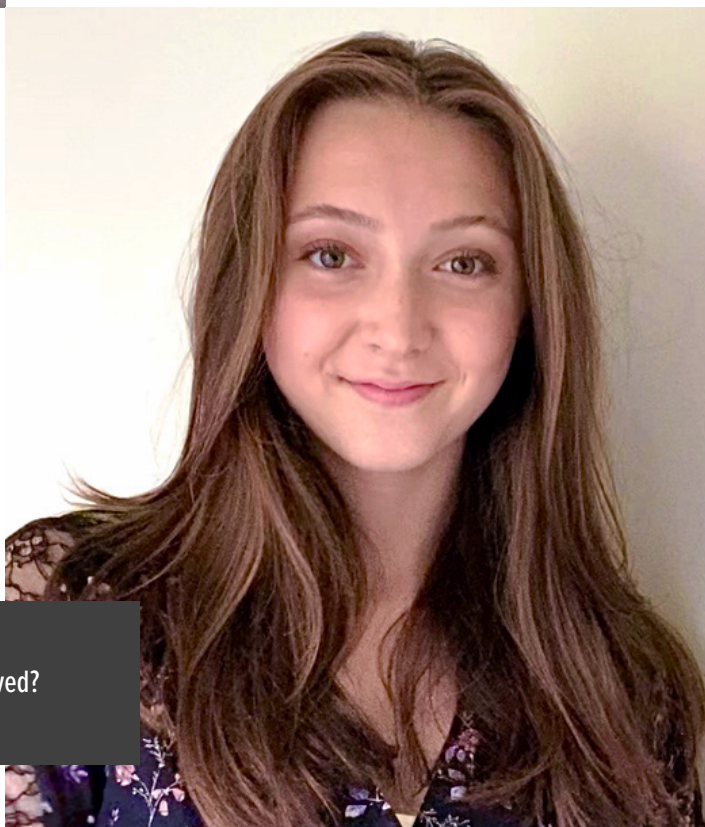
Our next audits released will report on GHG emissions for fiscal year 2019-2020 and 2020-2021 and our findings will be available in the fall or winter quarter newsletter and on our website.

To view past publicly available GHG graphs, please visit the Second Nature Dashboard. And for more information on BC's GHG reporting visit bellevuecollege.edu/sustainability/sustainbc/climate/ghgaudit/

Welcome Anya

Please join us in welcoming our new team member Anya Guyton! Anya is the new Sustainability Coordinator for the Office of Sustainability. She is a current Bellevue College student with a deep interest in engineering in renewable energy and biotechnology. Her interest in sustainability began a few years ago when gaining awareness through books and documentaries, and it has since grown into a passion of hers. In her spare time, she can be found playing music, trying out new cooking recipes, and chilling with her dog. Anya is super excited to have the opportunity to engage with others on campus sustainability initiatives!

Do you have a project idea that promotes positive social or environmental change on campus or are interested in getting involved? Email her at agniya.guyton@bellevuecollege.edu



Enjoy a Bike Ride to Kelsey Creek Park

Bellevue College to Kelsey Creek Park (410 130th Pl SE, Bellevue, WA 98005)

Summer might be coming to an end, but the sun is still shining and it's a great time to get outside! If you're looking for a quick trip, Kelsey Creek Park is just a fifteen-minute bike ride from Bellevue College and a great destination to spend your afternoon. If you don't have your own bike, try out a Lime Bike or another on-demand bike share.

Before leaving, plan your trip out on Google Maps. To start your adventure, head north toward 145th Pl SE from Bellevue College campus and hop on your bike. You'll want to bike on this road and continue onto 140th Ave SE. At Lake Hills Connector, make a left and then you'll see Kelsey Creek Park on the right. Make sure to pack water, snacks, and sunscreen!

Student Housing Move-out

When it comes to student housing move-out, sometimes residents can't pack-up and take everything with them. For those items left behind, we run a donation program! The program encourages residents to not trash their unwanted items, but instead give them a second life. Our donation program aims to reduce the amount of items sent to the landfill, while helping others in need. We proudly partner with Northwest Center who creates programs that "promote the growth, development, and independence for people with disabilities".

While it may have looked a little different this past quarter, we still ran our end of the year move-out donation program, but this time in a safe and socially distanced manner. Clothes and other soft goods were collected in large drop-off bins located outside the building and our partner Northwest Center picked up the goods. Thank you to everyone who participated!

New Bike Parking in King County

There are now 20 Metro and Sound Transit locations in King County (including Eastgate Park & Ride) with electronic on-demand bike lockers when you connect to transit. No long-term commitment needed, pay-as-you-go at only 5 cents per hour, with full flexibility to use any location any time. Secure your bike just a 3 minute walk from Campus at the Eastgate Park & Ride! More info here: bikelink.org/

Have a Project Idea to Implement on Campus?

The Student Environment Sustainability Fund (SESF) provides students, faculty, and staff a means to enhance Bellevue College's sustainability efforts and create positive social and environmental change on campus.

Get started here: bellevuecollege.edu/sustainability/get-involved/sesf

Sustainability Tips

You Shall Not Pass

Do you have any drafty doors or windows? These cause a significant amount of heat to escape outside, causing you to lose heat and pay more. A free solution is to simply roll up a towel and place it at the base of the doors/windows! You can also purchase window/door sweeps for a long term alternative.



Keep a Lid on it

Do you frequently use a stove to boil water and cook food? Make sure to use lids on your pots and pans while boiling water and cooking food to reduce your wasted energy consumption. When you don't use lids, more energy goes into the air around you instead of your food, resulting in longer cooking times and wasted energy.

Be in the Know!

Keep an eye out for the Office of Sustainability's future events, initiatives, and resources through BC's daily FYI Digest, our website and social media.

For any questions feel free to email us! sustainability@bellevuecollege.edu



@BCSUST



bellevuecollege.edu/sustainability