

FALL 2024

# chirp

The Office of Sustainability  
Newsletter



Sign up for  
quarterly releases



## Fall Sustainability Series Recap

First and foremost, we would like to thank everyone that attended and participated in our Fall Sustainability Series this year. It was a huge success and we had a blast planning and hosting all the events. If you missed out or want to attend more like these, Earth Month is just around the corner so keep your eyes peeled for that!

Be sure to stay in the know by seeing our emails in the Bulldog FYI and posts from the Office of Sustainability following @bcsust on Instagram and Facebook.

## Event Highlight: Mountain Bike Wind Farm Tour

As part of our 2024 Fall Sustainability Series, the Office of Sustainability partnered with the BC Wellness Center to host a tour of the Wild Horse Wind Farm outside Ellensburg, as well as an introduction to mountain biking. Students joined us to learn about clean energy generation, learning how the wind turbines work and even going inside one of them. Then we went on a mountain bike ride through the sagebrush at Manastash Ridge outside Ellensburg. This annual event is always a hit- if you missed this one, be sure to join our mailing list and look out for the next one offered in Fall 2025.



## Event Highlight: Campus Habitat Restoration Project

The Office of Sustainability and Grounds Department hosted two habitat restoration events on the east side of campus on October 9th and 23rd. At the events, 79 volunteers removed invasive species, prepared and trenched out the area for a biofiltration device, planted trees and shrubs, mulched and caged plants. We partnered with Cedar Grove to install a large biofiltration device called a compost BURito (Bioretention Urban Retrofit) to filter 6PPD-quinone, a chemical linked to coho salmon mortality. In the next two years, water testing for 6PPD-quinone and heavy metals will be completed to determine the duration of effectiveness of the biofiltration device. Funding was provided by a grant from the National Wildlife Federation and Mutual of Omaha as well as the Student Environmental Sustainability Fund.



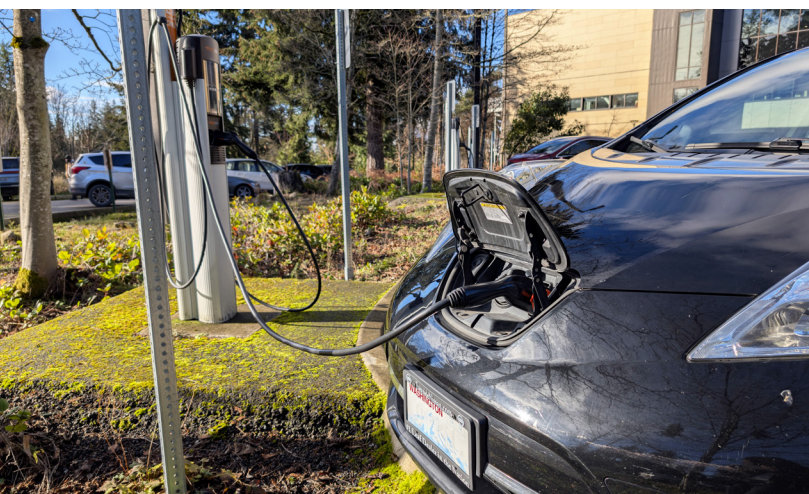
## Upcoming Sustainability Trip: WOHESC 2025

From March 5-7, this 3-day event brings together students, faculty, and sustainability leaders from across the Pacific Northwest. Held at Portland Community College, this year's theme is Cultivating Sustainable Communities, and will explore how we can create stronger community in the environmental movement. Engage in tours, speakers, panel discussions, and workshops on topics like Indigenous teachings, campus decarbonization, community building, and managing climate stress.

The Office of Sustainability is sponsoring a student cohort to attend, covering all expenses including travel, lodging, meals, and conference passes. Having attended WOHESC 2024, I can personally say it's an inspiring and invigorating experience that will leave you with a greater sense of purpose and new connections with people who share your interests.

- Nick Frey, Second Year Student and Outreach Coordinator, Office of Sustainability

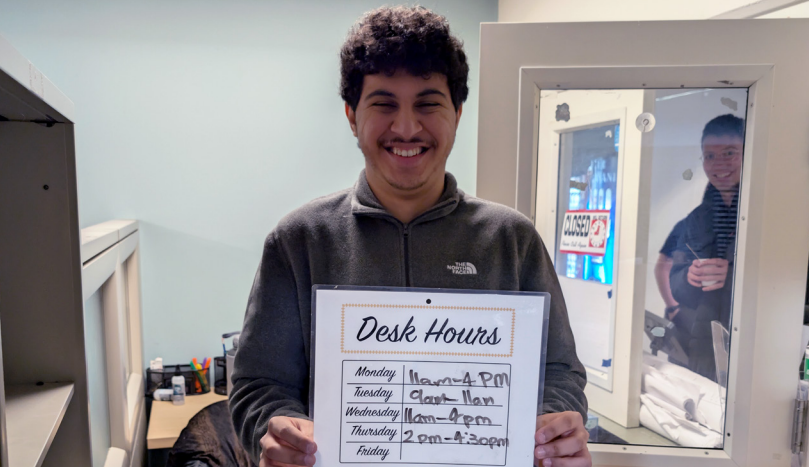
For staff and faculty interested in attending, we are a community partner with WOHESC and have a 30% discount code BC30 you can use when purchasing a conference ticket.



## EV Charger Grant

We are thrilled to announce that the Office of Sustainability was successfully awarded \$418,000 in grant funding from the Washington State Department of Commerce, for the installation of 12 new electric vehicle chargers around campus! We'll be adding 2 DC fast chargers, and 8 Level II chargers to help support our campus community.





## Introducing Ali

Ali Al-Shimary is the Student Transport Coordinator and can be found in C106 during office hours. He manages the Bike Rental Program and assists students with any questions related to transportation. The Office of Sustainability is striving to go carbon neutral by 2050, and Ali is very passionate in helping achieve that. Some of his hobbies include Woodworking, Cycling, and Language Learning. Ali is striving to work as a Transport Engineer.



## Introducing Nick

Nick Frey joined the Office of Sustainability in November 2024 as the Outreach Coordinator. He will be promoting sustainability events and initiatives on campus, helping students to engage more deeply with climate action.

Nick is currently studying for a bachelor's degree in Community, Environment, and Planning at UW. Prior to joining Bellevue College and pivoting into sustainability, he was an entrepreneur and app developer. He has lived in San Francisco, where he was one of the creators of Apple's Shortcuts app on iOS. He also enjoys making music.

## Seattle to Bellevue 2 Line

A common question we hear all around the King County Metro area is "When is the 2 line going to connect to Seattle from Bellevue?" Recent news is announcing a 2025 opening date, now the question is what's the best way to navigate the growing metro system? There are several options, from not requiring an internet connection to benefiting from shared location data to get an accurate ETA. Text your stop ID to 62550 to find the next departure times of transit service at your stop, this method only requires service, not a data plan, which can be handy if you were to end up in a dead zone and couldn't access Google Maps or the Transit app. You can alternatively use King County's Metro Planner or Google Maps to plan your trip, this can be handy for those who don't want to constantly check their phone or don't have cell service. If you have strong cell service, the Transit app would be the best transit app in the King County area, with its strong user base providing accurate information on all modes of transit's ETA's, the Transit app is hard to beat. The Transit app also can find routes with several, efficient transfers.

## Bike Rentals

Bikes, Bikes, come rent a bike! Bicycles rented out by the Office of Sustainability are a deal, renting for \$45 a quarter. Bikes rented come with panniers, a bike repair kit, lighting, and much more! Bikes are tuned up at Gregg's Cycles by the end of the quarter, so you can ride easy knowing that a quality member of the Seattle biking community tuned up your bicycle. Look at the Bicycle Safety posters around campus to get ready for winter riding. Can't beat \$45 a quarter, come on over to C106 or email [transportation@bellevuecollege.edu](mailto:transportation@bellevuecollege.edu) to get started renting.



# 2024 IMPACT REPORT

## THE OFFICE OF SUSTAINABILITY'S END YEAR WRAP UP

32

Community  
Partner Organizations  
Brought to Campus



224

Earth Month  
Participants



Events



CSA Boxes  
of Organic,  
Local  
Vegetables  
Sold

Native Trees  
and Plants



Ceramic  
Cups



Tote  
Bags

Reusables Given Away

\$813,446

Awarded Grant Funding  
by the Department of  
Commerce, National  
Wildlife Federation,  
Second Nature, Bellevue  
College Foundation

## Winter Energy Efficiency Tips

The cheapest energy is the energy not used! Did you know that space heaters use around 1500 watts per hour compared to a heated blanket which only uses an estimated 150 watts? That's a 10% energy savings every hour. According to WA Department of Ecology for 2024, Puget Sound Energy's carbon emissions per kilowatt was 0.8927 lbs. of carbon dioxide. That means a standard 1500w space heater requires 1.229 lbs. of CO<sub>2</sub>e emissions to run per hour. If we estimate there are 100 space heaters on campus, then we are using an extra 6000kw per week if the space heaters are running for the average 8-hour workday. During the average Bellevue winter, there are about 25 weeks of more intense heating required. This means, space heaters are contributing to an additional 66.9525 tons of CO<sub>2</sub>e emissions annually on campus.

Switching to a low wattage space heater or heated blanket reduces CO<sub>2</sub>e emissions for winter energy to only 6.695 tons!  
Heated blankets and other types of radiant heat are

more efficient because instead of heating the air, they are heating the objects around it, like you, your couch, the floor.

Now that winter is here, understanding how and when to use space heaters could help the College save money and reduce our carbon footprint. Here are some helpful tips to reducing energy consumption:

Submit a work order request if you notice changes or unusually hot or cold temperatures- there might be maintenance required on the system.

If you have a space heater, turn the heater on low to start, and when the desired temperature is met, turn it off and unplug it. By keeping the heater on low, you are helping to prevent plug overload and keeping demand lower.







## Have a Project Idea to Implement on Campus?



The Student Environment Sustainability Fund (SESF) provides students, faculty, and staff a means to enhance Bellevue College's sustainability efforts and create positive social and environmental change on campus.

Fill out the paper work and present to the SESF committee for the opportunity to get your project funded! The next meeting is March 3rd!

**Get started here.**