

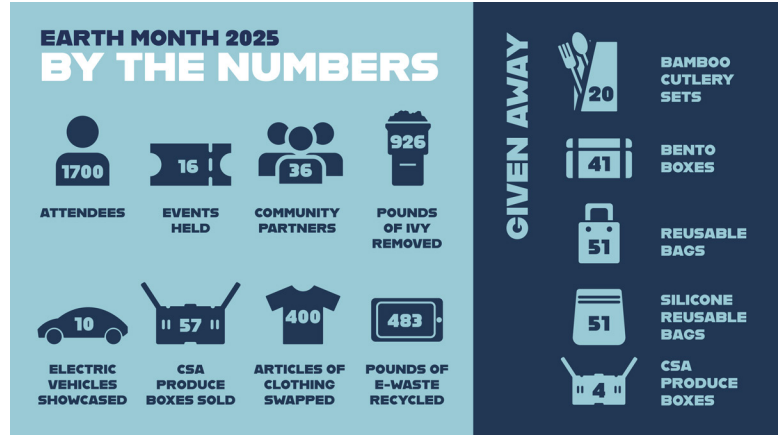
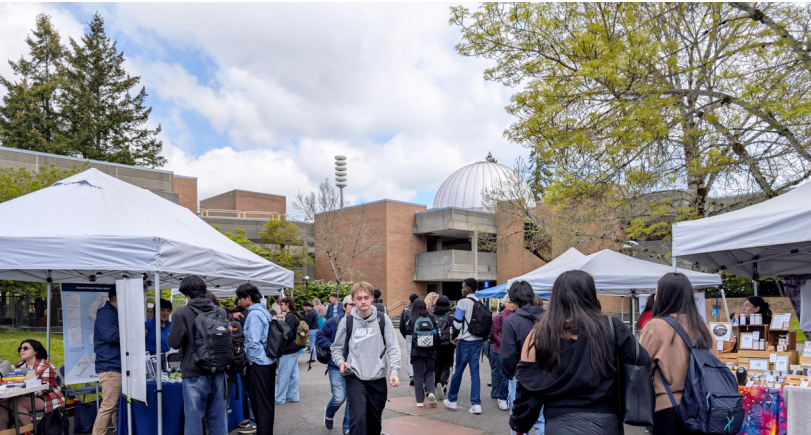
SPRING 2025

chirp



Sign up for quarterly releases

The Office of Sustainability
Newsletter



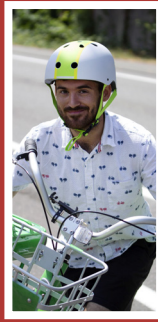
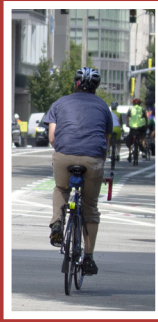
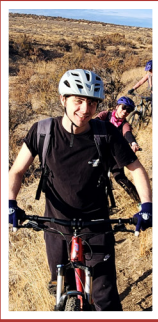
Earth Month 2025

This year's Earth Month programming packed the month of April with opportunities to connect with the environment around us, as well as with each other. The theme, *Make Waves: Amplify Your Voice*, emphasized the importance of speaking up and showing up in the face of environmental injustice.

Some highlights:

- The BC community came together to successfully pull invasive species at our Habitat Restoration.
- Housing and transportation-related bills were advocated for through postcard writing and emails at our climate action gathering. All of these bills passed.
- The clothing swap was our biggest ever, with over 300 pieces of clothing donated by the campus community, and the majority of it shopped by the campus community.
- Well over 1,700 people cumulatively attended Earth Month activities, and the month wrapped with our annual Earth Market, bringing over 30 local groups to campus.





MAY 2025

BIKE EVERYWHERE MONTH



Bike Everywhere Month

The Office of Sustainability celebrated Bike Everywhere Month this May and hosted a variety of fun events.

The events included BikeFest, a Bike Repair Station Demonstration, and an Introduction to Mountain Biking Trip with the Wellness Center.

In addition, the Office of Sustainability held a BC Bike Competition, where the top 3 participants with the most miles ridden won cool prizes!

Bike Lockers

Bike lockers are now available to rent for \$30 a quarter! Bike lockers provide shelter from the elements and an added layer of protection.

If you are interested, please email: transportation@bellevuecollege.edu
Availability is limited!

SESF – Energy Manager Role

Thanks to funding by the Student Environmental Sustainability Fund (SESF), the Office of Sustainability has been able to form a new Energy Manager position on campus. The role focuses on analyzing Bellevue College’s energy usage over time and finding opportunities to optimize.

Repurposing Concrete

During the demolition of the Bellevue College greenhouse, the Grounds Crew was able to save 26 cubic yards of concrete (36.4 tons) from going into the landfill. Instead, the broken pieces will be used to build some new beds near the Stumpery and E Building! Concrete is one of the most carbon intensive building materials due to the manufacturing process. An estimated 8% of total global emissions emitted are from the concrete/cement industry. Some 30 billion tons of cement are used annually and is the second most used material in the world.

By repurposing the concrete, the college is saving 3,300 metric tons of carbon dioxide equivalent emissions. For scale, that is about the same as a car that gets an average 28 miles per gallon driving 12,000 miles! While 36.4 tons is hardly significant, if every construction project worked to reuse even a portion of the total materials, we could make a significant dent in industrial emissions.



Salmon Safe

Bellevue College is officially certified Salmon Safe. Through diligent stormwater management practices, the college protects the local watershed and salmon populations. Contributing to this certification was the installation of compost BURitos in the southeast corner of campus in October 2024. Biofiltration, exemplified by the BURitos, filters out harmful contaminants such as 6PPD-Q, which is lethal to coho salmon. The Office of Sustainability is committed to improving stormwater management for the duration of the five-year certification.

Transportation Survey

Attention Students: Take a two-minute anonymous survey about your travel to and from BC or your online classes and be entered for a chance to win a pre-loaded ORCA Card!

https://bellevuecollege.co1.qualtrics.com/jfe/form/SV_4YoQGjGj2hOMiUK

Data gathered from this survey helps calculate the college's annual greenhouse gas emissions as well as guide the Office of Sustainability in making campus transportation decisions.



WOHESC Recap

In March, we were delighted to bring a group of 8 students to the Washington Oregon Higher Education Sustainability Conference in Portland, OR at Portland Community College. Sponsored by SESF, the trip included lodging, transportation, food, and a pass to the conference. Students attended talks and panels ranging from campus engagement in sustainability to Indigenous climate solutions.

The adventure started by meeting at King Street Station to take the Amtrack to Portland. Once we arrived in Portland, we had the evening to rest and get ready for an action-packed day. We made the most of Portland's bus system to get to and from the conference. While at the conference, students had the opportunity to interact with other students and listen to a wide range of industry professionals.



Clean Buildings Performance Standard

The Office of Sustainability has been working with ATS to update campus submetering for the past year. Bellevue College has had building submetering since 2014. In 2023, the original system failed due to technology issues, resulting in inoperable meters. As of May 15, all but two meters are considered complete! Each building has a submeter to measure electricity, gas, and water usage. By collecting this data, our office and the rest of Campus Operations team are able to understand where energy and water usage is going and notice any issues quickly. The data will help the college continue to make building improvements in order to meet Clean Building Performance Standard requirements.

You might see some of our gas meters around! The data is then sent to a control box and then is sent to our dashboard.

BC Foundation Mini-Grant		Second Nature Catalyst Grant	
Arboretum Signage Update	\$3,000	Grounds Small Equipment Decarbonization	\$7,500
Professional Development	\$2,950		
Student Housing Bike Rack	\$750		
SBCTC Climate Solutions Grant		WA Department of Commerce	
Arboretum Lushootseed Translations*	\$1,289	EV Chargers	\$403,000
Earth Month Speaker - Camille Dungey*	\$5,000	Building A, N, S - HVAC Retrocommissioning*	\$177,946
		Building D HVAC Upgrade*	\$754,000
		Building Q HVAC Upgrade	\$200,000
		Solar Plus Storage - System Planning	\$100,000
National Wildlife Federation			
Lot 5 Habitat Restoration	\$8,500		
Seattle Garden Club			
Arboretum Signage Update	\$5,000		
		Total	
			\$1,668,935

Climate Commitment Act Grant Funded Projects*

Spring Energy Saving Tips

Spring is trying so hard to arrive! Now that colder days are behind us, make sure to unplug space heaters and return them to the warehouse. Leaving unused items plugged in for long periods of time can lead to excess energy draw. According to Watt IQ, an estimated 21% of all electricity consumed by buildings is waste. Try it at home, you might be surprised to find how much energy you save if you are diligent about unplugging chargers, candle warmers, appliances when they are not in use! The author of one article I read said they saved \$38 the first month and \$30 the second month.

As we head into the summer months, make sure to close your blinds! Nearly 76% of heat comes from solar heat if the window is in direct sunlight. You can help block out that heat by closing the blinds up, so the blades are facing out!

By the Numbers - Grants

Check out all the grants awarded to The Office of Sustainability and all the projects they were used for during the 2023-2025 biennium!



Have a Project Idea to Implement on Campus?

The Student Environment Sustainability Fund (SESF) provides students, faculty, and staff a means to enhance Bellevue College's sustainability efforts and create positive social and environmental change on campus.

Fill out the paper work and present to the SESF committee for the opportunity to get your project funded!

Get started here.

