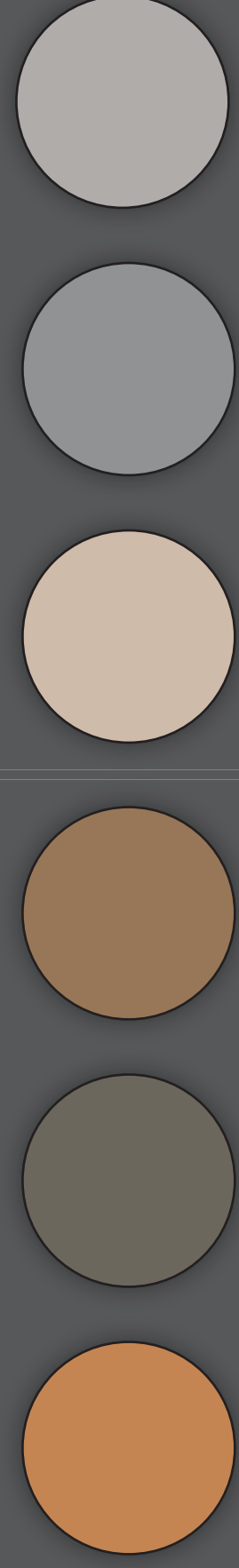




Marsha P Johnson Social Justice Center

INDES 382 - Social Justice Coffee House
ryan ross



intimacy gradient

The *intimacy gradient* was coined by author Christopher Alexander in 1977 (Alexander). This idea of a sequence of public to private spaces is something I'd like to explore for my social justice center. This sequence of spaces are important to the psychology of behavior, but also connect to Universal Design, Disability Justice, Historical Precedent and the Third Place.

Patterns

- intimacy gradient:** see above
- zen views:** Alcove in library helps create an intimate view of garden terrace area
- stair seats:** give view to indoor/outdoor terrace and event space
- outdoor room:** blends indoor and outdoor with cozy lounge furniture
- opening to the street:** blurs the line between street and indoors
- alcoves:** give private and intimate spaces
- seating circle:** communal fire pit creates space for small groups



Stakeholder Survey: info screen can display schedule of events.

Alexander Patterns: Bright entry, and dimmer as you proceed through space

Disability Justice: chairs with and without arms allow for different abilities



Alexander Patterns: Zen view in private alcove

Disability Justice: ADA ramp creates gentle slope for universal access.

Social Justice: Library and book exchange with books related to justice.

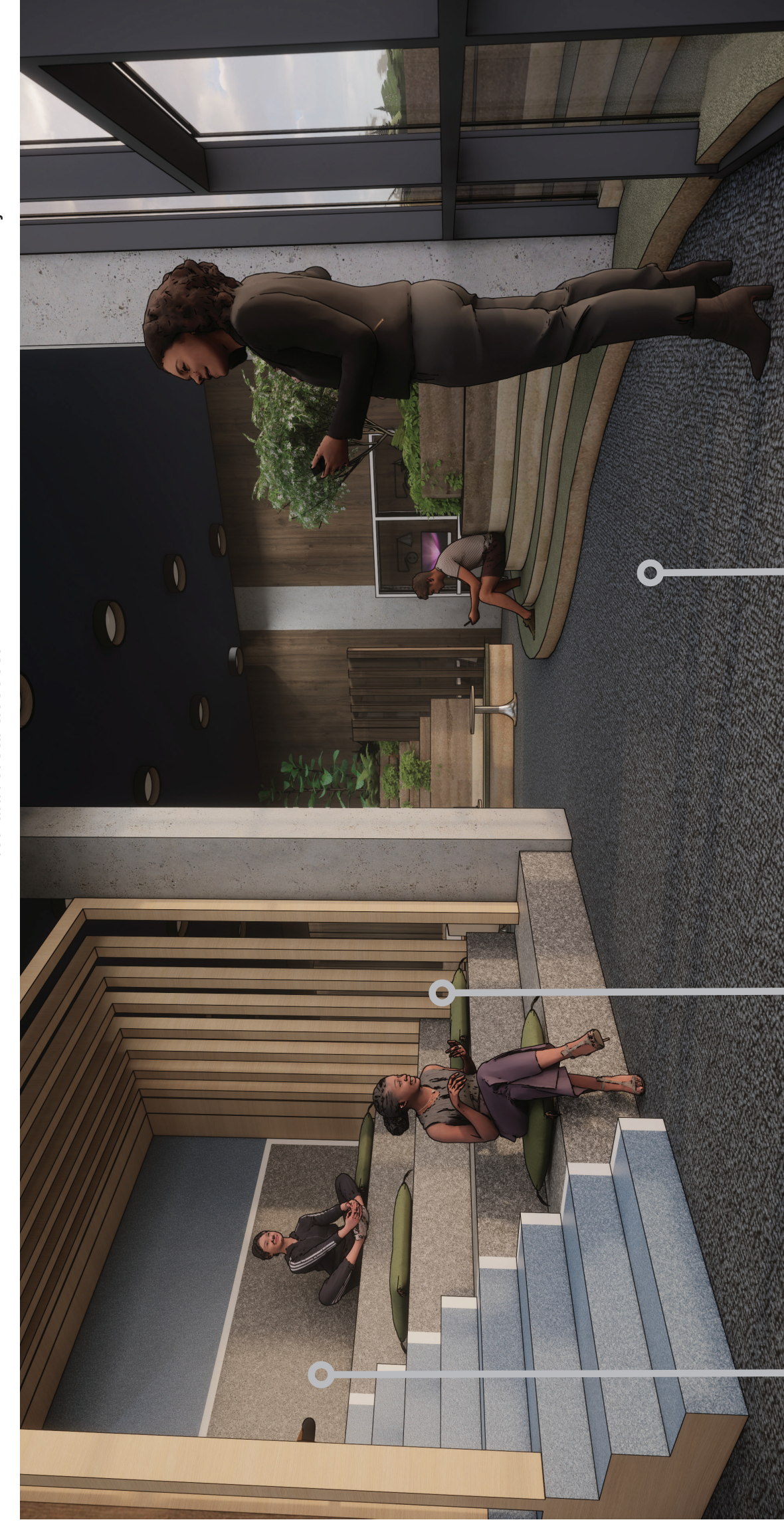


Stakeholder Survey: water bottle filling station

Sustainability: Locally-sourced white oak floors.

Sustainability: 100% recycled plastic

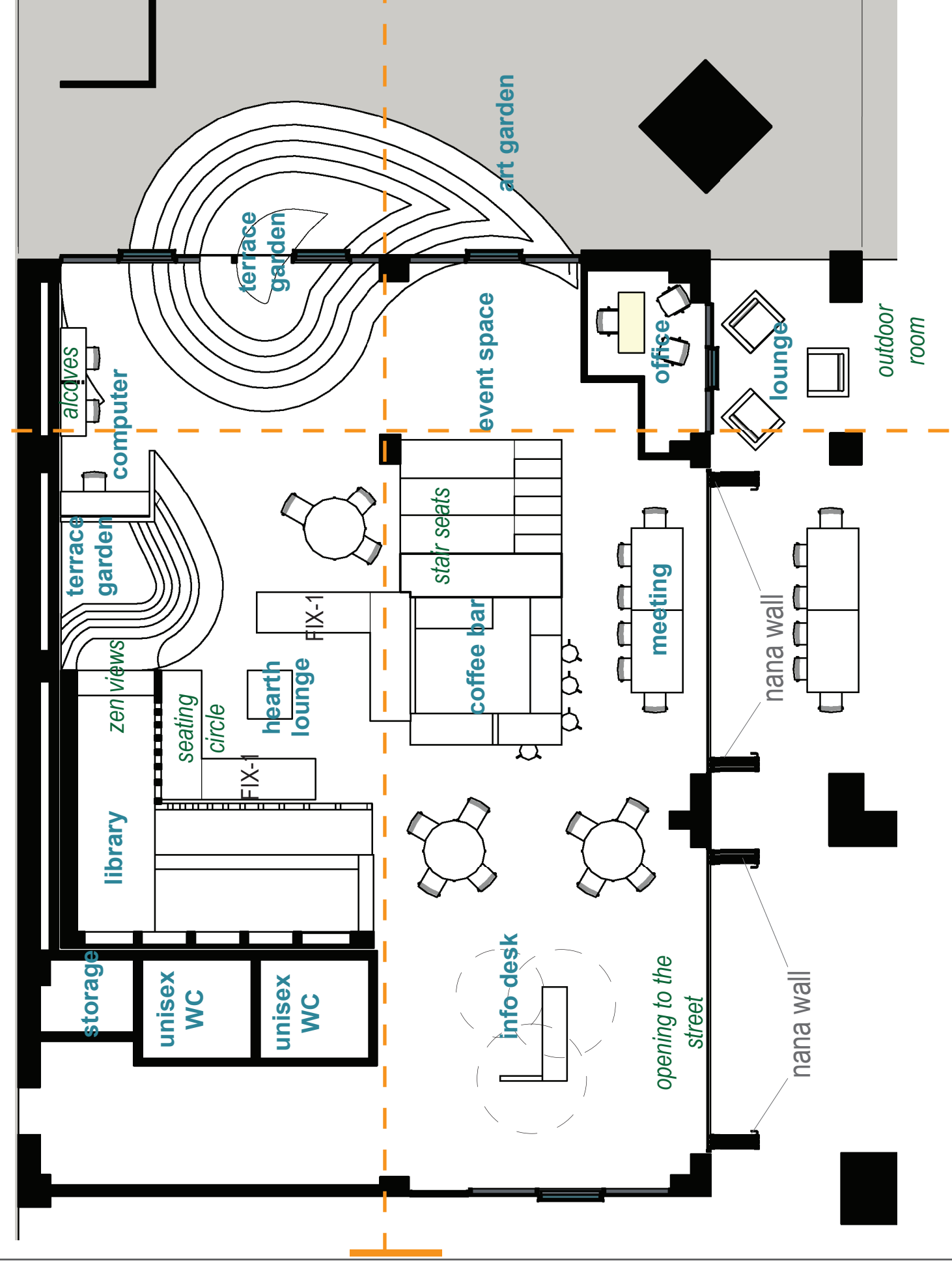
Disability Justice: chairs with and without arms allow for different abilities



Disability Justice: felt material dampens sound creating comfortable environment for all.

Alexander Patterns: Stair seating for events.

Stakeholder Survey: event space for talks or social gatherings.



floor-plan
1/8" = 1'-0"