

theWatchdog

The Student Voice of Bellevue College

2015

WELCOME GUIDE

Sponsored in
part by the:



5

REASONS

EWU IS ON YOUR SIDE

MAJORS

- › BA in Business options
 - General Business
 - Human Resource Management
- › BA in Interdisciplinary Studies
- › BA in Psychology
- › BA in Children's Studies

1. REPUTATION
2. CONVENIENCE
3. VARIETY
4. OPPORTUNITY
5. COMMUNITY



ON YOUR TURF ON YOUR TIME



EWU EXTENDED
CAMPUSES

RUNNING START | OFF-CAMPUS | ONLINE | CONTINUING ED

OUTREACH.EWU.EDU
425.564.5100

Table of CONTENTS



**Academic
Success Center**
Building D - 204
425-564-2200

Tutoring



Reading Lab



Writing Lab



Math Lab



Drop-In Tutoring

available to ALL students!

Stop by the Academic Success Center for a tour:

September 15th, 2015
9:00am – 3:00pm • Room D204

Hours beginning September 21st:

Monday – Thursday: 8:00am – 8:00pm

Friday: 8:00am – 3:30pm

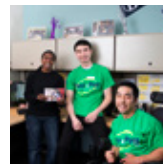
Saturday & Sunday: 11:00am – 4:00pm

www.bellevuecollege.edu/asc



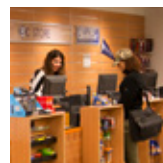
PAGE 4

**Welcome from
Student Programs
Assistant Dean**



PAGE 6

**Important Student
Services**



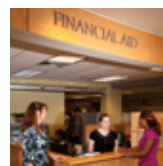
PAGE 7

**Academic Advising
and the BC Store**



PAGE 8-9

**Campus Maps: Finding
Your Way Around**



PAGE 10

**Ways to Pay: Financial
Aid at BC**



PAGE 11

**Leadership Institute:
Discover Your Inner
Leader**



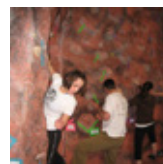
PAGE 12

**A Strong Tradition:
BC Athletics**



PAGE 13

**Transportation
Options at BC**



PAGE 14

**Expand Your Sense
of Adventure at the
Wellness Center**

STUDENT PROGRAMS

Welcome!

Welcome new students to the 2015-2016 school year! On behalf of Student Programs, I would like to take this opportunity to welcome you to Bellevue College. We are very proud to have you as a new member of the college community.

Bellevue College is truly a special place that allows you the opportunity to realize your academic goals. As a new student at Bellevue College, you are bound have questions. Please feel free to stop by the PALS Center on the first floor of the Student Union Building (C Building) or the Student Programs Office on the second floor. Additional services are located in the Student Affairs Building (B Building) including Advising, Financial Aid, Multicultural Services, TRiO, the Center for Career Connections, Counseling, and the Disability Resource Center.

The Office of Student Programs is here to support and challenge you to become and contribute as global citizens. We have a rich and vibrant student life community with over 100 clubs and programs to choose from. I invite you to come to the Student Programs Office in C212 to connect or partake in many of the activities offered free of charge to students. Be prepared to meet new people and make new friends.

Please feel free to contact us at (425) 564-6150 or for more information, visit our website at www.bellevuecollege.edu/stupro/.



Faisal Jaswal

Faisal Jaswal

Associate Dean of Student Programs



**Sept 15, 2015
10 AM - 2 PM**

**Student Union
& Fountain
Courtyards**

- Free lunch provided
- Tour the campus
- Meet fellow students, faculty and staff
- Learn about student clubs and programs
- Pick up your student and/or nursing ID card

**FALL OPEN
HOUSE**



IMPORTANT SERVICES

Name of Organization	Description / Services	Location	Website
Academic Advising	Professional academic advising to help students meet their educational goals	2nd Floor – Student Affairs (B Bldg)	www.bellevuecollege.edu/advising/
Financial Aid	Learn about and apply for financial aid at Bellevue College	1st Floor – Student Affairs (B Bldg)	fa.bellevuecollege.edu/
Academic Success Center	Tutoring and Academic Assistance	D204	www.bellevuecollege.edu/asc/
MCS	Multicultural Services provides academic success and student support	2nd Floor – Student Affairs (B Bldg)	www.bellevuecollege.edu/mcs/
TRiO	Individualized academic advising with extensive personal support to students with limited income, disabilities, or who are the first in their families to attend college	2nd Floor – Student Affairs (B Bldg)	www.bellevuecollege.edu/trio/
DRC	Disability Resource Center	B132	www.bellevuecollege.edu/drc/
Wellness Center	Personal fitness and health	G128	www.bellevuecollege.edu/pe/wellness-center/
Counseling Center	Counselors assist students with a wide variety of personal life challenges or any other concerns that may be impacting academic performance.	2nd Floor – Student Affairs (B Bldg)	www.bellevuecollege.edu/counseling/

Services By and For Students

PALS Center	Peer Assisted Leadership through Service	C106	www.bellevuecollege.edu/pals/
Peer-to-Peer	Peer to Peer is a student-run support program for clubs, programs, and campus life	C106	www.bellevuecollege.edu/pals/peer-to-peer/

Student-Led Organizations

ASG	Associated Student Government	C212 (Student Programs Office)	studentweb.bellevuecollege.edu/asg/
Leadership Institute	The Leadership Institute is a year-long cycle of opportunities and is free to students	C212 (Student Programs Office)	www.bellevuecollege.edu/leadership/
OLS	Office of Student Legislative Affairs	C212 (Student Programs Office)	studentweb.bellevuecollege.edu/osla/
CAB	Campus Activities Board	C212 (Student Programs Office)	www.bellevuecollege.edu/cab/
LGBTQ Center	Lesbian, Gay, Bi, Transgender, Queer	C205, but enter through C212	www.facebook.com/bellevuecollegeLGBTQ
BSU	Black Student Union	C212 (Student Programs Office)	www.bellevuecollege.edu/organizations/programs-we-support/
El Centro Latino		C212 (Student Programs Office)	www.bellevuecollege.edu/organizations/programs-we-support/
ISA	International Student Association	C212 (Student Programs Office)	www.bellevuecollege.edu/organizations/programs-we-support/
BCAV	BC Association of Veterans	C212 (Student Programs Office)	www.bellevuecollege.edu/organizations/programs-we-support/
APISA	Asian Pacific Islander Student Association	C212 (Student Programs Office)	www.bellevuecollege.edu/organizations/programs-we-support/
The Watchdog	Student Newspaper	C206	www.thewatchdogonline.com/
Phi Theta Kappa	Student Honor Society	C212 (Student Programs Office)	www.bellevuecollege.edu/pals/phi-the-ta-kappa/

Academic Advising: Plan Your Future

Academic Advising offers professional academic and educational planning to new and continuing students by providing the resources and planning tools to best develop a meaningful, sound educational plan to achieve their academic and life goals. As advisors, we know that students come to Bellevue with many different goals in mind, and we are excited to meet with them and assist them along the way. Advising is done by major or area of interest, so students are also welcome to meet with more than one advisor if they are unsure of their area of study or wanting to explore multiple areas. The Academic Advising Department often collaborates with staff in other departments when it comes to serving students.

The best time to make an appointment with an advisor is as soon as the schedule for the quarter is published. Students can call the main department line, (425) 564-2212, or come to the front desk on the second floor of the B-building to schedule. During the week before classes start and the first week of the quarter we only do drop ins and quick questions in

order to help as many students as possible. We recommend meeting with an academic advisor at least once a quarter. Students who plan to transfer can work with an advisor knowledgeable about the universities and the transfer process. The Department hosts quarterly transfer fairs and workshops to also assist with this effort.

When students have quick questions or aren't able to come in for an appointment, Academic Advising offers a variety of valuable resources on the departmental website, bellevuecollege.edu/advising. For example, students access all of the Degree Requirement Worksheets and Transfer Major Guides, which lists degree requirements and recommended courses for transferring in a particular area. The Degree Audit is also a great way to check which courses have been completed, which are still left to complete, and how far away students are from their academic goal. General questions can also be submitted via the department email address, advising@bellevuecollege.edu; students can expect a response in up to 48 hours.



BC Store: More than books

BC's bookstore is located on the north side of campus on the first floor of the Student Affairs (B) building and sells everything students need whether it be textbooks, study materials, school and art supplies, quirky gifts, BC apparel, or an afternoon snack. The bookstore also provides textbooks rentals and buybacks, which occur during the first and last week of each quarter. In addition, the bookstore's website offers a price comparison tool with other reliable companies, so that BC students' can take advantage of the best deal available. The website also provides the ability to look up what books are required for each class.

Remember: Thinking about book purchases early can help make the first week less stressful.

For more information, visit the bookstore website at bcc.collegestoreonline.com

LEARN from the CITY

BEST ONLINE PROGRAMS
USNews
BACHELORS
2019

**ASSOCIATE DEGREE
— to —
BACHELOR'S DEGREE**

ASK ABOUT OUR TRANSFER SCHOLARSHIP

ONLINE. IN PERSON. NONPROFIT.
www.CityU.edu • 888.422.4898 • info@CityU.edu

CityU
of Seattle

City University of Seattle is a not-for-profit and an Equal Opportunity institution accredited by the Northwest Commission on Colleges and Universities.

Welcome! **to your BC PALS CENTER**

SERVICES HERE FOR YOU:

- › Trained Staff
- › Discount Movie Tickets
- › BC OneCard
- › Campus Resources
- › Faxing
- › Mailing Stamps
- › Mini Computer Lab
- › Campus Event Tickets
- › Limited Free Printing
- › Loaner Netbooks

Ask Us!

Located on the first floor of the Student Union Building next to the fountain!

MAIN CAMPUS MAP

STUDENT AFFAIRS (B Building)

First Floor (B123 – B127):

Admissions & Registration B125
BC Store (Bookstore)..... B127
Cashier's Office B126
Evaluations/Graduation B125

Financial Aid..... B125
Veteran's Office..... B125

Second Floor (B230 – B234):

Academic Advising B231

Career Education Options (CEO) ... B233
Center for Career Connections
& the Women's Center B231
Counseling Center B233
High School Programs B233

Multicultural Services (MCS) B233
Running Start B233
Student Affairs, Vice President B231
Summer Enrichment B233
TRIO Student Support Services B233

Outside Entrance (West Side):

Disability Resource Center (DRC) .. B132
Testing Services..... B142
Workforce Education..... B131



PARKING LOT DESIGNATIONS

Daily Metered Parking: Open to Visitors, Employees & Students with Quarterly Parking Permits

Discount Permit Parking: Requires Discount Permit (all student permits okay)

Employee Parking: Requires Employee Permit

Student Parking: Requires Non-Discount Student Permit (daily permits okay)

Reserved Parking: Loading Dock

9A, 9B, 9D, 9F, 12, & 5th floor of Parking Garage

1A, 1B, 3A, 3B, & 5

B1, B2, C1, C2, C3, C4, C5, C6, C8, C10, C12, D1, D2, F2, 4, 9C, 9D, 9E, 13, 15, & 19

2, 6, 8, 7, 10, 10C, 14, 16, 17, 18, & 1st – 4th floors of Parking Garage

B3, C7, & 20

INDEX



NEED HELP? CALL:

Information(425) 564-1000
 North Campus(425) 564-4000
 Public Safety(425) 564-2400
 Student Affairs(425) 564-2222
 Technology Help Desk.....(425) 564-4357



WAYS TO PAY: FINANCIAL AID AT BC



For students who will be applying for financial aid for this upcoming school year, there are a lot of things to keep in mind.

Deadlines

The deadline for Fall Quarter of 2015 has already passed; however, funds can be disbursed retroactively if the student is eligible for aid. Students who have missed the deadline should consider alternative funding methods such as the Tuition Payment Plan (see below) until the Financial Aid Office has had a chance to review their file. The deadline for Winter

Quarter is Oct. 9, 2015, and the deadline for Spring Quarter is Jan. 29, 2016.

Required Forms

Students who would like to receive financial aid in 2015-2016 must apply by filling out two different applications: the 2015-16 Free Application for Federal Student Aid (FAFSA) and the 2015-2016 Bellevue College Financial Aid Application. These applications can be accessed at fa.bellevuecollege.edu. Note: Students must reapply for financial aid every year.

Checking Your Status

Once students have applied, they should check the online financial aid portal for status updates and also remember to regularly check their BC email for information and award letters. The financial aid portal is located at: <https://www.fas.ctc.edu/portal4/?col=080>.

Disbursement

After receiving their notice of award, students should go to fa.bellevuecollege.edu/youraid/ onecard to learn about their disbursement options. Students can choose from two electronic methods or get a paper check.

Keeping Your Aid

SAP (Satisfactory Academic Progress) is an important part of getting and keeping your aid. Students receiving financial aid should review the SAP policy at fa.bellevuecollege.edu/youraid/sap.

Tuition Payment Plan

The Tuition Payment Plan allows students to set up an automatic payment of their class fees and tuition in monthly installments for each quarter. This plan is available through Nelnet Business Solutions and accepts credit and debit cards or automatic payment from a bank account. For those interested, visit www.bellevuecollege.edu/enrollment/financial/pplan/ to find out more or to enroll. The Tuition Payment Plan is not available for international students.

Visiting the Financial Aid Office

The Financial Aid Office is located in the Student Services (B) Building, but please make sure you check the financial aid website at fa.bellevuecollege.edu/ as hours may be limited due to the high volume of applications. There is a drop box for dropping off forms during closed hours. And remember: Financial Aid staff are here to help – please see them if you have any questions about your financial aid.



Get a computer from \$99

InterConnection.org

Microsoft
REGISTERED
Refurbisher

Research, gaming, homework, graphic design

We have your computer needs covered

10% OFF
Coupon
BCROCKS



Purchase online at
www.interconnection.org/store or
www.interconnection.org/lowincome*

*Qualifications apply in our low-income store

Get help covering college expenses

WELLS
FARGO



If you're a student, we know that tackling your courses is a top priority — so why worry about how you're going to pay for your education? With student loans from Wells Fargo, we have the products to help cover your college expenses so you can focus on what's really important.

For more information, call or click today!

1-800-456-1551 • wellsfargo.com/student

Bellevue Kelsey Creek • 15015 Main St. • 425-256-7904

Together we'll go far

© 2015 Wells Fargo Bank, N.A.
All rights reserved.
Member FDIC. (1242782_14508)



Student Programs Leadership Institute: Discover Your Inner Leader

Students seeking to discover their own learning and working style and broaden their abilities to work in a team should come to the Office of Student Programs in the C building, room 212. There, they will find the Student Programs Leadership Institute (SPLI), a program with a wide variety of options to help build leadership skill sets for students. The goal of the SPLI is to provide students with tangible skill building to help better guide them through their college experience and beyond.

The Student Programs Leadership Institute (SPLI) is a curriculum of leadership learning opportunities spread throughout the academic year (September through June). Enrollment is informal, meaning students can progress through the entire institute beginning in September, or have the option of attending as few or as many of the events they feel are relevant to them. The offerings range from hour long seminars to a four-day in-depth retreat.

Programming kicks off during Fall Quarter in two major ways: classes begin, and the year-long seminar series kicks off. A major component of the SPLI are a **trio of Human Development (HD) classes**: HD 210 Leadership Today offered fall quarter, HD211

Leadership for Tomorrow offered spring quarter and HD 212 Inclusive Leadership offered winter quarter. The classes are two credits each, and tuition can be waived provided a student fills out a work grant, available in the Office of Student Programs. The classes are always scheduled Wednesday afternoons 2:30pm–4:30pm.

The **seminar series** is a monthly rotation of hour long seminars focused on building skills to effectively build a club or other organization. In the fall, the seminars offered will teach students about recruiting students to clubs and organizations; publicity and event planning; and effective leadership and building a team. The seminars are tentatively scheduled on September 29, October 27, and November 24. Seminars continue through winter and spring quarter, but have not been firmly scheduled at this time.

The learning experiences get deeper with the **Mid-Year Leadership retreat on December 11**. This is an all-day on-campus event, scheduled deliberately after finals week has wrapped up for the quarter. The programming changes every year, depending on current needs of the student leaders. Topics we've covered in the past have included communicating across cultures, creating safer spaces and bystander intervention training.

Training typically runs from 9:00am–4:00pm and includes a light breakfast and full lunch.

The biggest piece of the SPLI however does not occur until the last full week of June, following the end of spring quarter. The SPLI offers the **Summer Leadership Retreat at Camp Casey**, a four-day over-night crash-course in leadership opportunities. Students learn nuts and bolts leadership skills including their communication style, developing trust and navigating their own identity. There is also plenty of fun to be had at a ropes course, a pool party, and a dance.

The Summer Leadership Retreat serves as both a capstone for students, but also a jumping off point for students who have applied for formal leadership positions on campus.

There is no cost associated with any of the programming, as the SPLI is funded through the Services and Activities fee students already pay in their tuition. For those interested in more information about the SPLI, they can check out our Facebook Page: Bellevue College Leadership Institute: <https://www.facebook.com/BCSPLI/>. They can also contact Brandon Lueken, the program coordinator for the Leadership Institute at Brandon.Lueken@bellevuecollege.edu or (425) 564-6166.

A Strong Tradition: Bellevue College Athletics

Bellevue College offers eleven team sports which have solid reputations of being top competitors in the Pacific Northwest for over thirty years. BC's athletic teams compete in the Northwest Athletic Conference, also known as the NWAC, in the following sports.

FALL

Men's Soccer

David O'Neill took over the head coaching reigns in 2015 at Bellevue College, a program with a rich winning tradition featuring 10 NWAC titles; the second most in conference history. The Bulldogs tied for third in the NWAC West Region in 2014 with freshman forward Anthony Dean being named the Most Valuable Player in the West Region, leading the region with 15 goals scored.

Women's Soccer

Former assistant Dan Lock began his first season as head coach of the BC women's soccer team in 2015, replacing Kiko Magana, who took over as the women's soccer coach at his alma mater, Lees-McRae College in North Carolina.

Volleyball

BC volleyball has been a top team in the NWAC for several years and is now under the direction of Coach Jocelyn Lawrence. In 2014, the Bulldogs finished second in the NWAC North Region and placed seventh at the NWAC Championship tournament. Bellevue shared the North Region title in both 2012 and 2013 and finished second in 2011.

WINTER

Men's Basketball

BC basketball has a rich tradition in northwest college hoops. A perennial playoff contender, the Bulldogs tied for first in the North Region each of the last two seasons and have won or shared the crown seven of the last 11 seasons. Over that span, the Bulldogs have produced nine seasons of 20 victories or more under coach Jeremy Eggers. During his 12-year tenure, the Bulldogs qualified for the NWAC Championships in 10 of the last 11 seasons.

Women's Basketball

The Bulldogs were 12-2 in the NWAC and 22-10 overall in 2014-15 under first-year coach Mel Stubblefield, finishing second in the North Region behind Peninsula College, whose only conference loss was to Bellevue. During the regular season, the Bulldogs put together a 13-game winning streak. The Bulldogs have posted 10 consecutive winning seasons, including six seasons of 20 or more victories, and two more 19-win seasons. During that decade, the Bulldogs have won three North Region titles, including back-to-back titles in 2013 and 2014, and shared another crown. They also have five second-place regional finishes in that span.

SPRING

Softball

The Bellevue softball program is coming off a strong 2015 season where the Bulldogs posted a 31-14 overall record and a 19-5 region record to finish second in the North Region and earn their 11th straight NWAC Championship berth. The softball program led by Head Coach Leah Francis won North Region titles in 2013, 2012, 2011, 2009, 2008, 2006 and 2005 (the first region title in school history) and placed second in 2015, 2014, 2010 and 2007.

Women's Tennis

Head Coach Jason Chapman has led Bellevue tennis to nine NWAC titles in the last ten years, including a streak of eight consecutive from 2005-2012. Chapman has also been Coach of the Year nine times and has had several players moving on to play at four-year college, including at the NCAA Division I level.

Men's Tennis

BC Men's Tennis was resurrected for the 2015 spring season with Women's Tennis coach Jason Chapman leading the team.

Baseball

BC Baseball has established itself as one of the top junior college baseball programs in the country. The squad was ranked nationally all season long in 2012 and was No. 8 nationally in June 2011 after capping off an amazing year by winning the NWAC Championship with a 37-14 record. It was the team's third title in five years. With several league titles to its name, a high number of winning teams, and top-notch facilities, it's no surprise that BC baseball athletes consistently receive scholarships to 4-year colleges and universities.

Men's Golf

The BC golf team was resurrected in 2006 and continues to be one of the top programs in the region. Bryan Stevens, Director of Instruction at TPC Snoqualmie Ridge, is the head coach. In 2015, the Bulldog's men's team finished second in the NWAC, with Chad Hall finishing third and Jack Strickland tying for ninth. Hall repeated as a first-team All-League selection and was joined by Strickland on the first team. The program has garnered several team and individual successes. Most notably, former Bulldog Richard Lee starred at the University of Washington and is now on the PGA Tour. The men's team captured the NWAC Championship in stunning fashion in 2010, as well as runner-up finishes in 2008 and 2013. The Bellevue College program also has sent several golfers on to NCAA Division I programs.

Women's Golf

The Bellevue College women's golf team has established itself as one of the top programs in the region. Bellevue won the 2015 NWAC team title in dominating fashion with a 29-stroke victory for the program's third title in four years.

www.bellevuecollege.edu/athletics/



Transportation Options at BC

Bellevue College manages parking and offers alternatives to driving to promote a sustainable learning, working and living environment. Visit the transportation desk in the C building for help planning your route or to ask transportation questions! Additional information can also be found at www.bellevuecollege.edu/sustainability/.

Bus & ORCA Cards

One of the best ways to save time and money on your commute is by catching the bus to campus. BC helps double the value of your bus pass simply by being a student, which means more money in your wallet! Routes and trip planners can be found at our website. ORCA cards are passes preloaded with cash values, which are used to pay for bus & public transportation around Bellevue and Seattle. Passes can be purchased in cashier's office (B126).

ORCA PLUS: BC matches bus credits, DOUBLING your value. ORCA Plus options:

- BLUE : \$240 value in bus credits for just \$120
- SILVER: \$120 value in bus credits for just \$60

**Reduced fare, youth, and senior citizen options available online.*

Carpooling

BC Ridematch is a fun and easy way to find fellow students, faculty, staff, and others that live nearby and fit with your unique schedule so you can share your ride. It's also our reward program where you can calendar your bus, bike, walk, and carpool trips for great prizes. If you have 3 or more students carpooling, you can even get a carpool pass! To get started just create an account on our BC Ridematch website at <http://bellevuecollege.icarpool.com/>

Biking

The ultimate sustainable commute: get in shape, and live a healthier, happier life by biking to school. We provide a number of accommodations for cyclists as well as transportation assistance in the C building for those whose commutes involve bussing and biking. For more information visit www.bellevuecollege.edu/location/biking/

We want to reward those who decide to take the leap towards more sustainable alternative transportation. Some of the services BC provides for our cyclists include:

- Free access to showers and lockers after a ride to campus

- Fixit Repair Station at the parking garage entrance north of bus shelter
- Practice loading your bike on a bus with the practice rack north of bus shelter
- Bike and covered parking around campus
- Urban Biking Courses and adventures through the Health and Physical Education Department

Parking

Parking permits are required in all student and employee parking lots. Permit parking is enforced Monday-Friday 6:00 am to 3:00 pm except weekends and holidays. Bellevue College offers a wide variety of different quarterly parking pass options as well as daily parking meters. For parking pass packages, visit us online at www.bellevuecollege.edu/publicsafety/parking/



EXCEED EXPECTATIONS

with Classes, Certificates and Professional Development

BCconted.com

B BELLEVUE
C O L L E G E
CONTINUING EDUCATION

OUTDOOR ADVENTURES

Expand Your Sense of Adventure: Join the BC Wellness Center

Looking for another way to expand your academic experience? Join the BC wellness Center and the Wilderness Skills Certificate program to: climb a rock wall, paddle an inland waterway, hike to a cascade peak, bike on San Juan Island, or go backpacking overnight, all while meeting others who share an interest in the outdoors.

The BC Physical Education Department has been offering outdoor recreation opportunities for students since 2003. Outdoor events are hosted through the BC Wellness Center and credit courses are offered through the Physical education department. Students can attend quarterly introductory events or take a quarter-long course in a wide variety of outdoor pursuits.

A Wellness Center introductory event is a 2-3 hour introductory workshop giving students an opportunity to experience outdoor recreation with guided instruction while building a sense of community. Introductory events cost only \$5 and motivate many students to go one step further and take a quarter-long course to expand their knowledge in any number of outdoor adventure areas.

Upcoming Events for Fall 2015:

Introduction to Indoor Rock Climbing

Rock climbing is a great way to relieve stress, build muscle tone and improve self-efficacy. It's also one of the statistically safest recreational activities available. Put life priorities in perspective by dangling from a 40' cliff with a fellow BC student. All climbing equipment and instruction is provided. Packing list and information sheet provided upon online registration.

Guided Friday Afternoon Hike

Meet at the Rattlesnake Ledge trailhead for a group hike. Basic information and topographical maps will be provided. Come prepared with comfortable walking/hiking shoes, a day pack with water, food, clothing and a light source.

Take this opportunity to meet other outdoor enthusiast and start your weekend in an active and invigorating way.

Introduction to Overnight Backpacking

Learn what is needed to spend more time outdoors. Participants will meet for a required planning session to cover gear, clothing, food, tour planning, and equipment rentals. The second meeting will be on the mountain where we will spend the afternoon hiking and the evening experiencing perfect star gazing (weather permitting). Don't miss this EPIC adventure!

For information on credit courses this Fall, visit The Wellness Center's website at www.bellevuecollege.edu/pe/wellnesscenter/. Also stay tuned to the website for the complete Fall adventure list which will be published on September 30th and will include details on events, gear rentals, and trip planning.

Get Out There!!!

Questions?

Contact Peter Prescott: peter.prescott@bellevuecollege.edu

LEARN LOCALLY

EARN YOUR DEGREE WITH
WESTERN



www.edu/locations

Active Minds Changing Lives
AA/EO



UNIVERSITY of WASHINGTON | BOTHELL

A UNIVERSITY of **BOUNDLESS POTENTIAL**

*OFFERING 45 UNDERGRADUATE
AND GRADUATE DEGREES*

Apply Now

www.uwb.edu / 425.352.5000



3000 Landerholm Circle SE
Bellevue, WA 98007

2015

WELCOME GUIDE

TECH



CAFE

CANVAS WORKSHOPS

LOCATED IN L100C

Monday, September 21
10:30am - noon

Monday, September 21
2pm - 3:30pm

Tuesday, September 22
10:30am - noon

Tuesday, September 22
5pm - 6:30pm

HELP MENU

Get help with...

Net ID
MyBC
Student Email
Canvas
PaperCut
BC WiFi
...and More!

PRE-RECORDED SESSIONS

Pre-recorded sessions are available online. Scan the QR code or visit the link below.

For More Info



<http://depts.bellevuecollege.edu/helpdesk/students/canvas>

OPEN SEPT. 21-25, 10am-6pm - L100