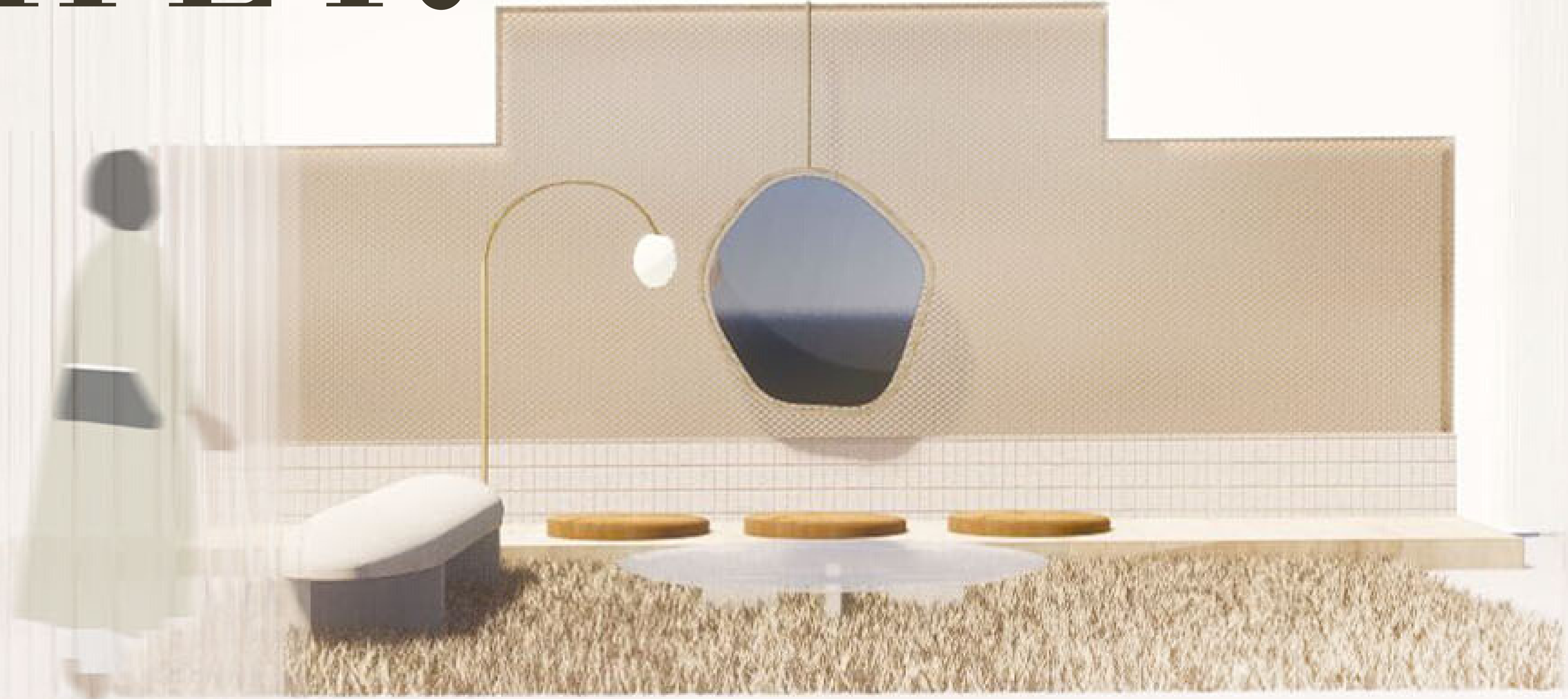


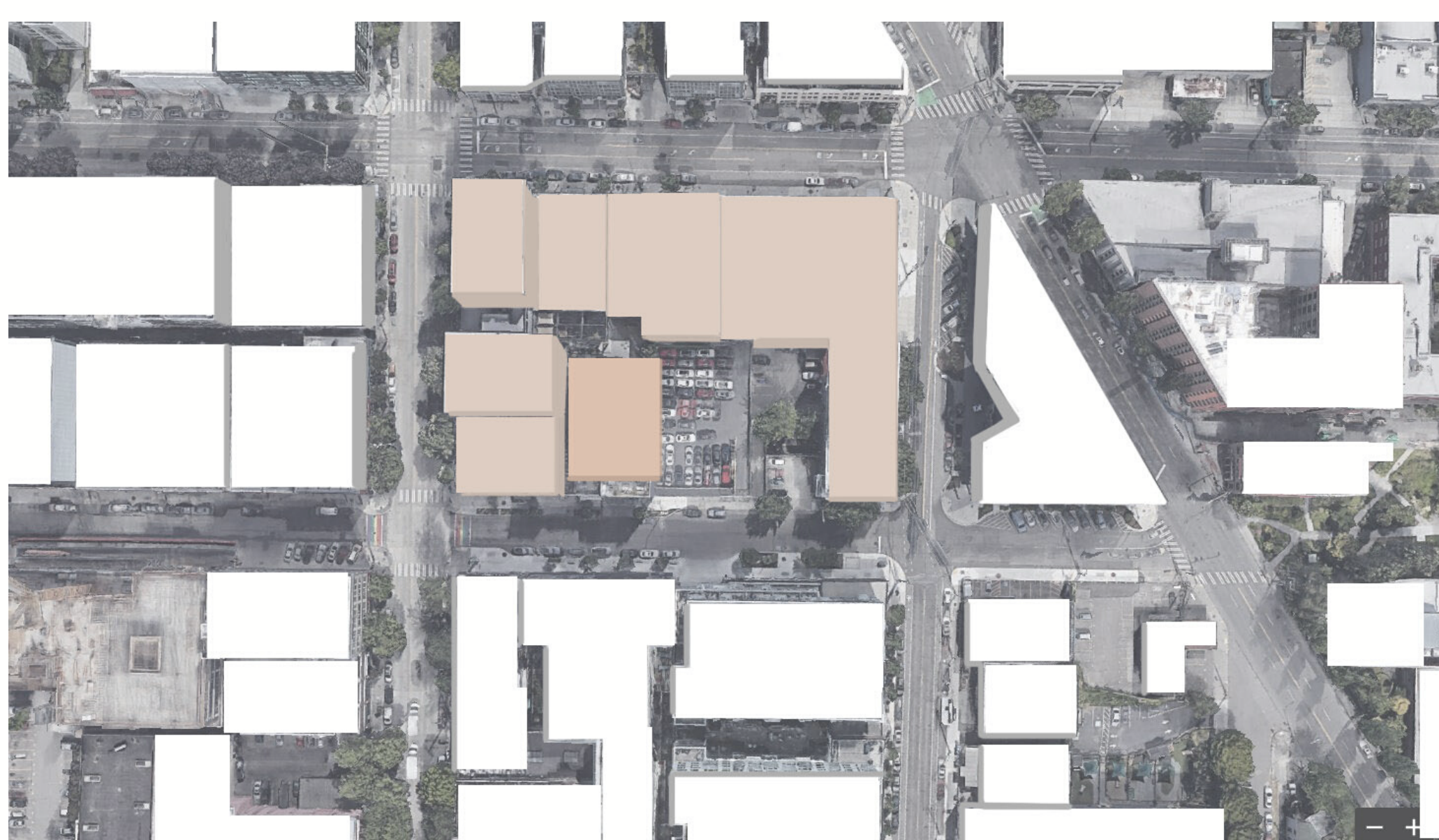
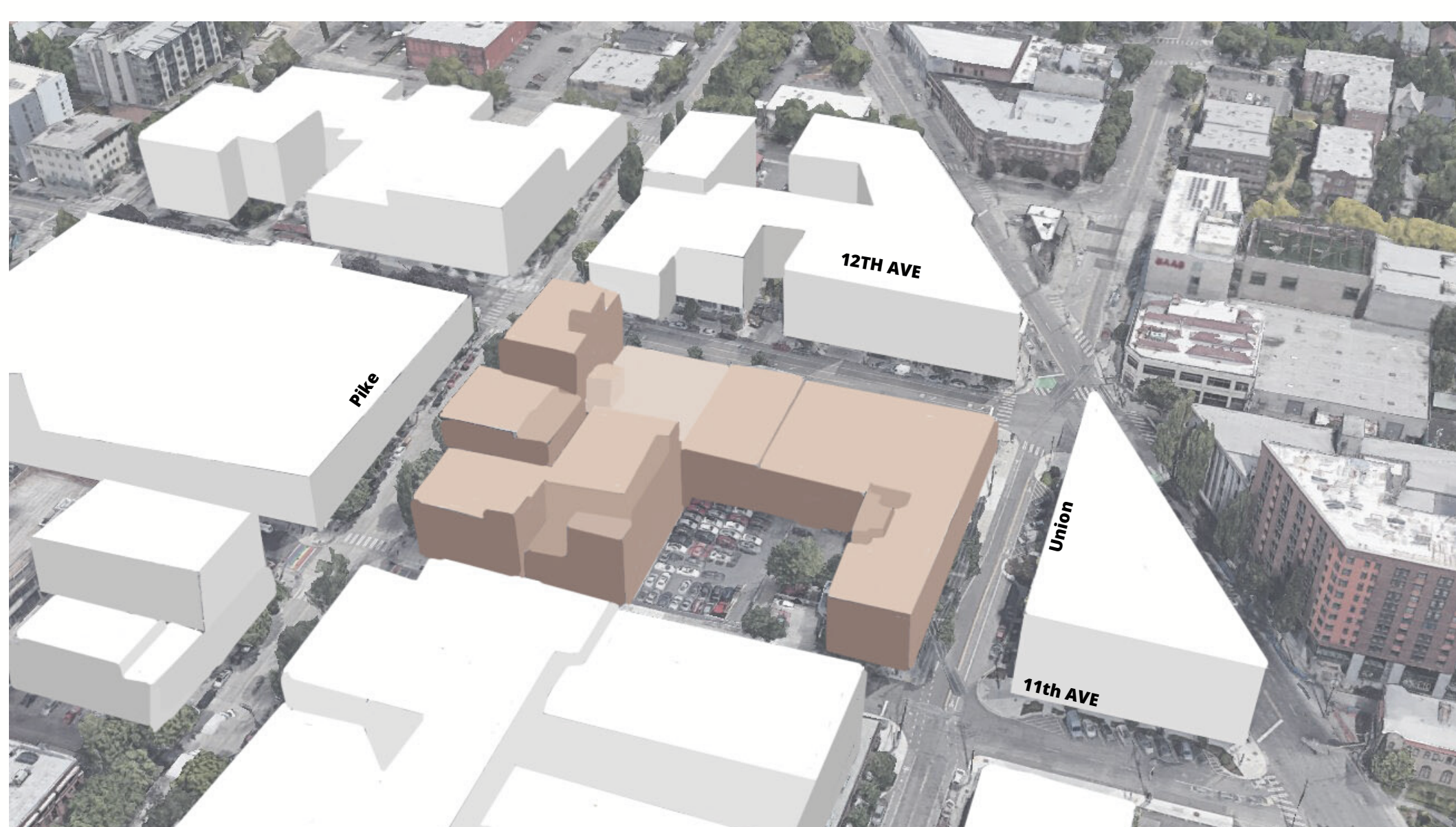
HER

UNITY
TRANSPARENCY
INTERSECTION



CITE CONTEXT-CHOP HOUSE ROW

1424 11TH AVE
SEATTLE, WA
98122



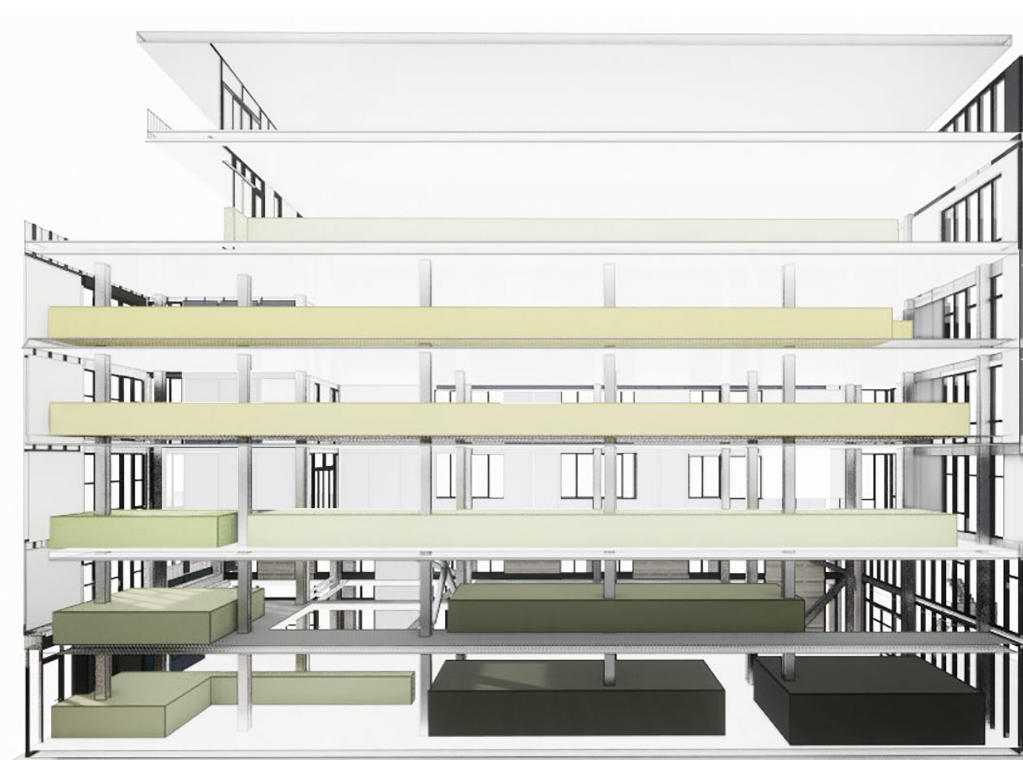
For my program I want to develop a hub specifically designed for women. A place of shelter and refuge where women from all walks of life can come and feel supported. I intend on creating a space that evolves into a community of women supporting each other that fuels the progression of women's rights and empowerment. During this pivotal time in society, the equal opportunities and freedom for women are being threatened and eliminated. I want my space to become an aid and place of assistance and enrichment for those both successful and those who need a helping hand. I believe by creating a platform that helps develop our own support system we can enhance the future of society in a professional, social, and economic way.

I want to explore events and activities that bring people together by studying the best way to make everyone feel welcome and supported. I believe in order to bring a diverse group of women together I need to identify various solutions and activities that would intrigue women from all social standings. In order to incorporate all, we must discover how we can assist the already prosperous along with the ones who are struggling. In order to provide a space that would be mutually beneficial to women of all economical standings I need to explore the question of how we can be of assistance to all.

PROGRAM

- Classrooms-640 sq ft
- Social-1300 sq ft
- Gym-650 sq ft
- Storage-300
- Offices- 160 each
- Restrooms- 140 sq ft
- Meditation- 400 sq ft
- Transitional Housing- 55 sq ft

DIAGRAMS



WEST TO EAST
SECTION

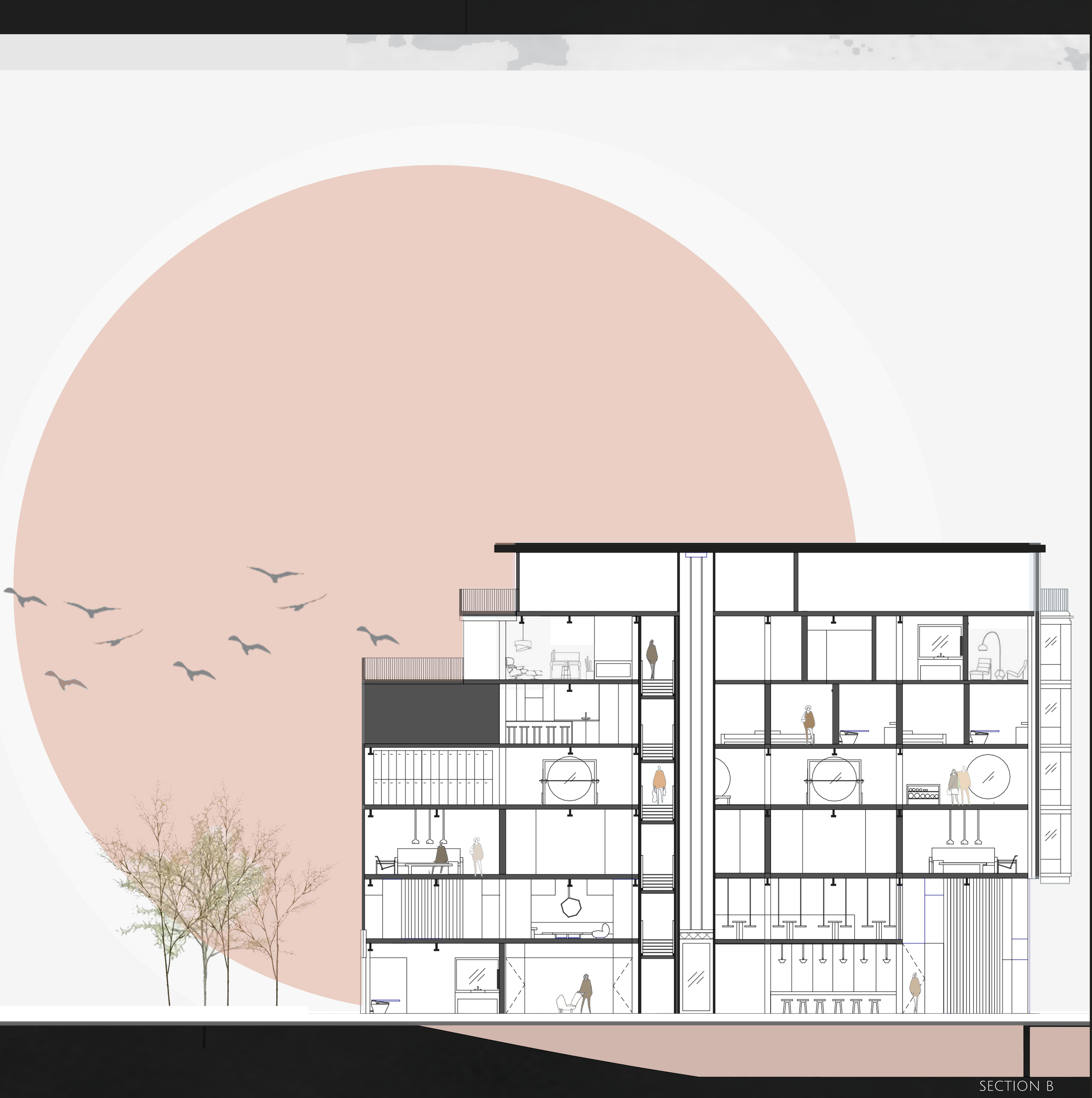
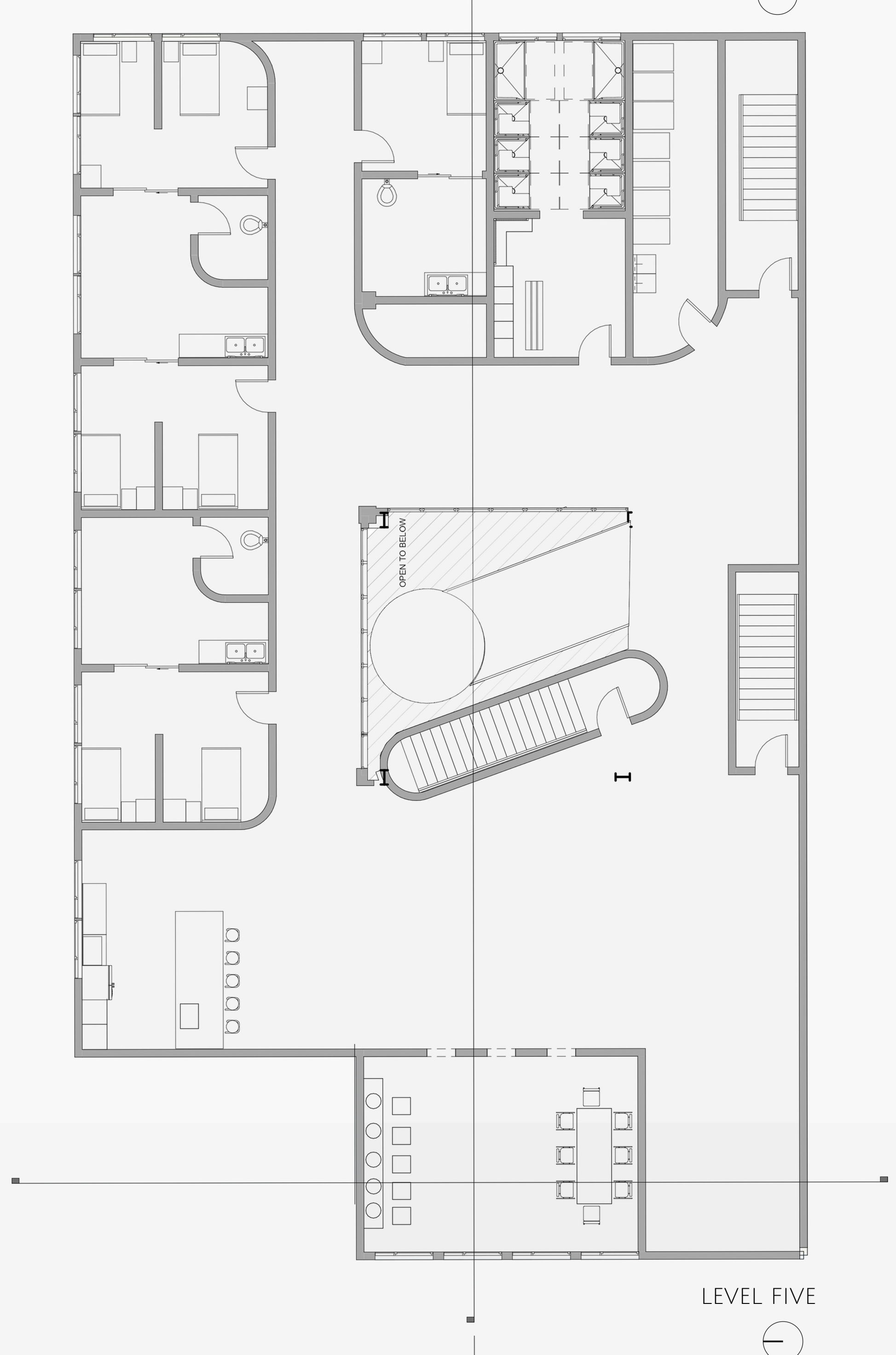
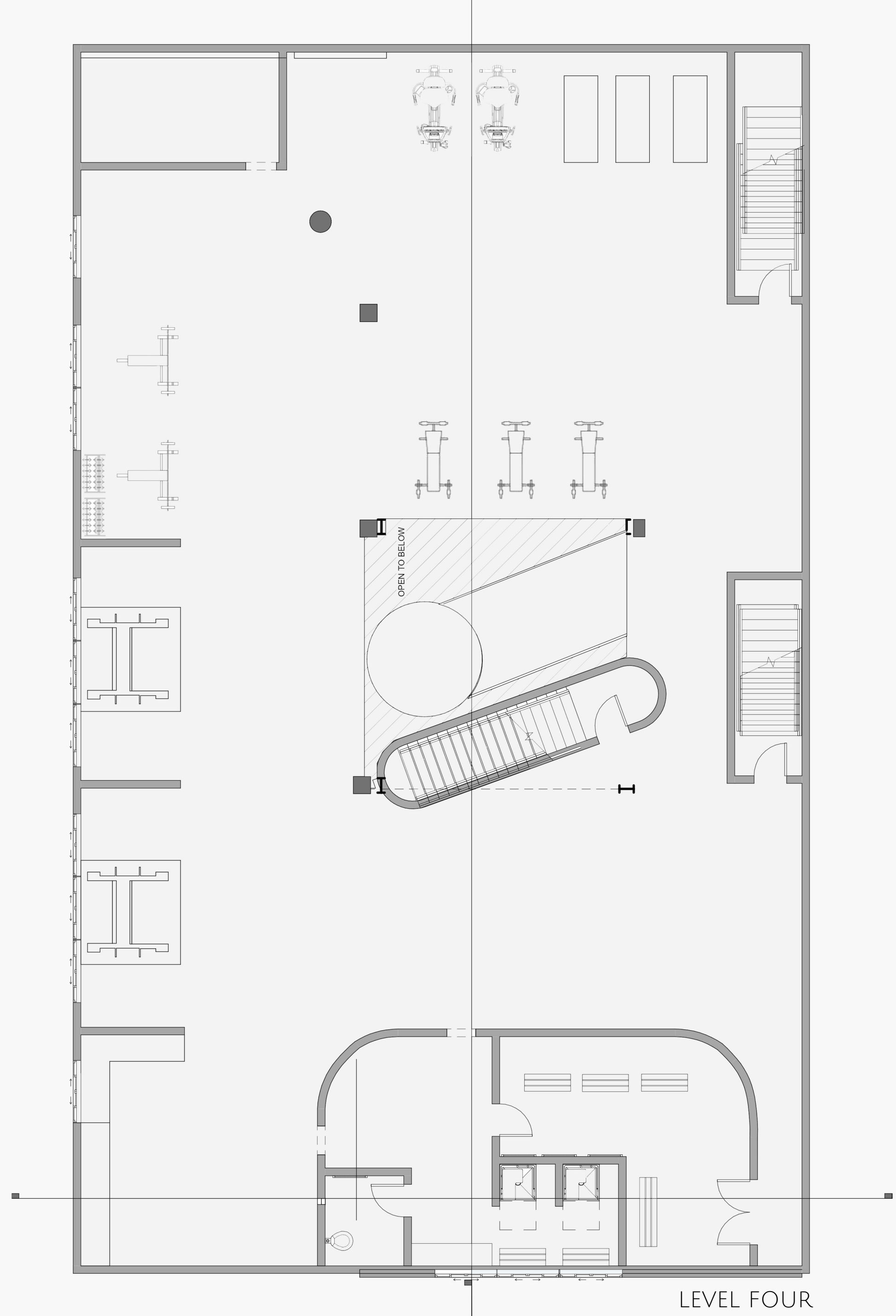
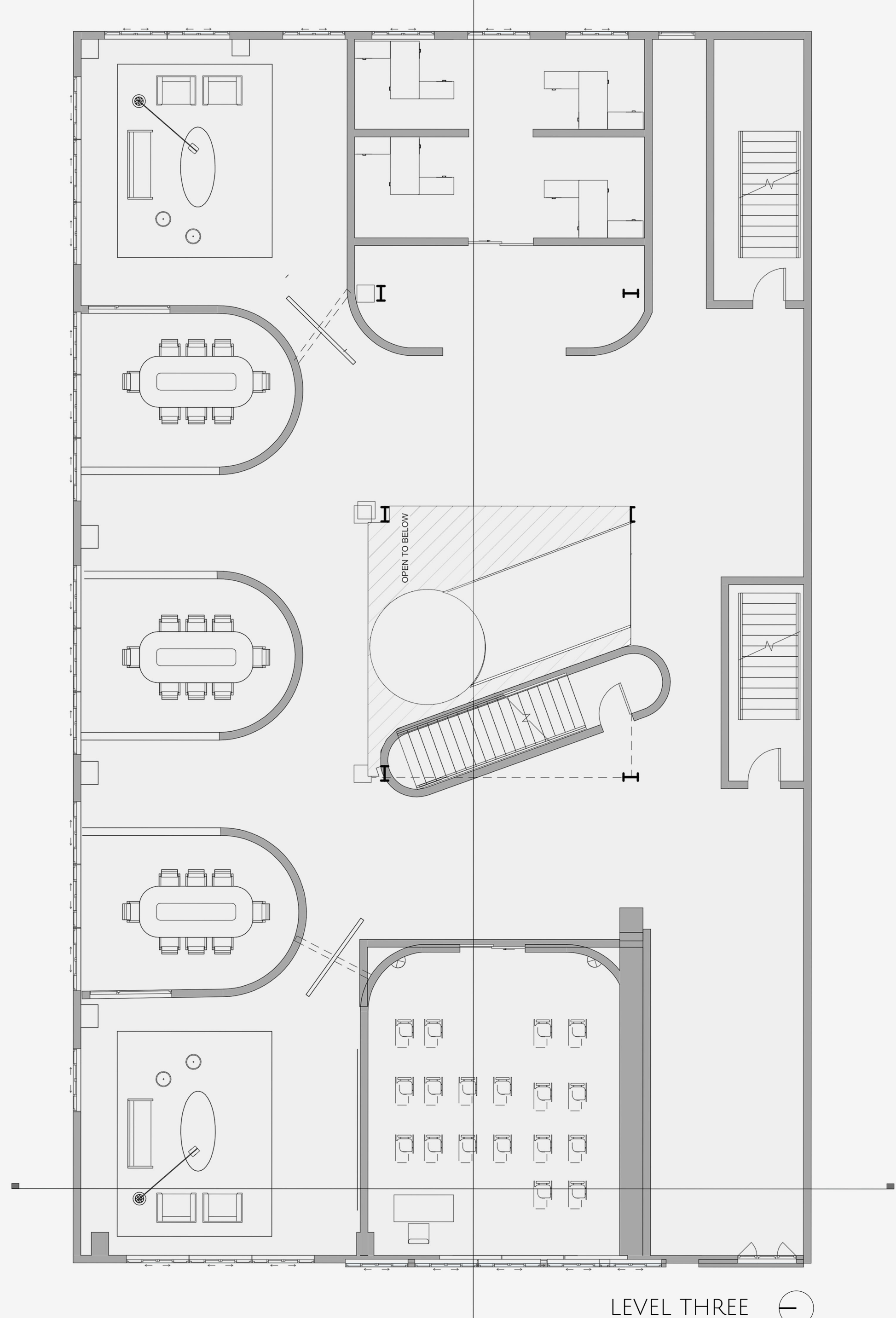
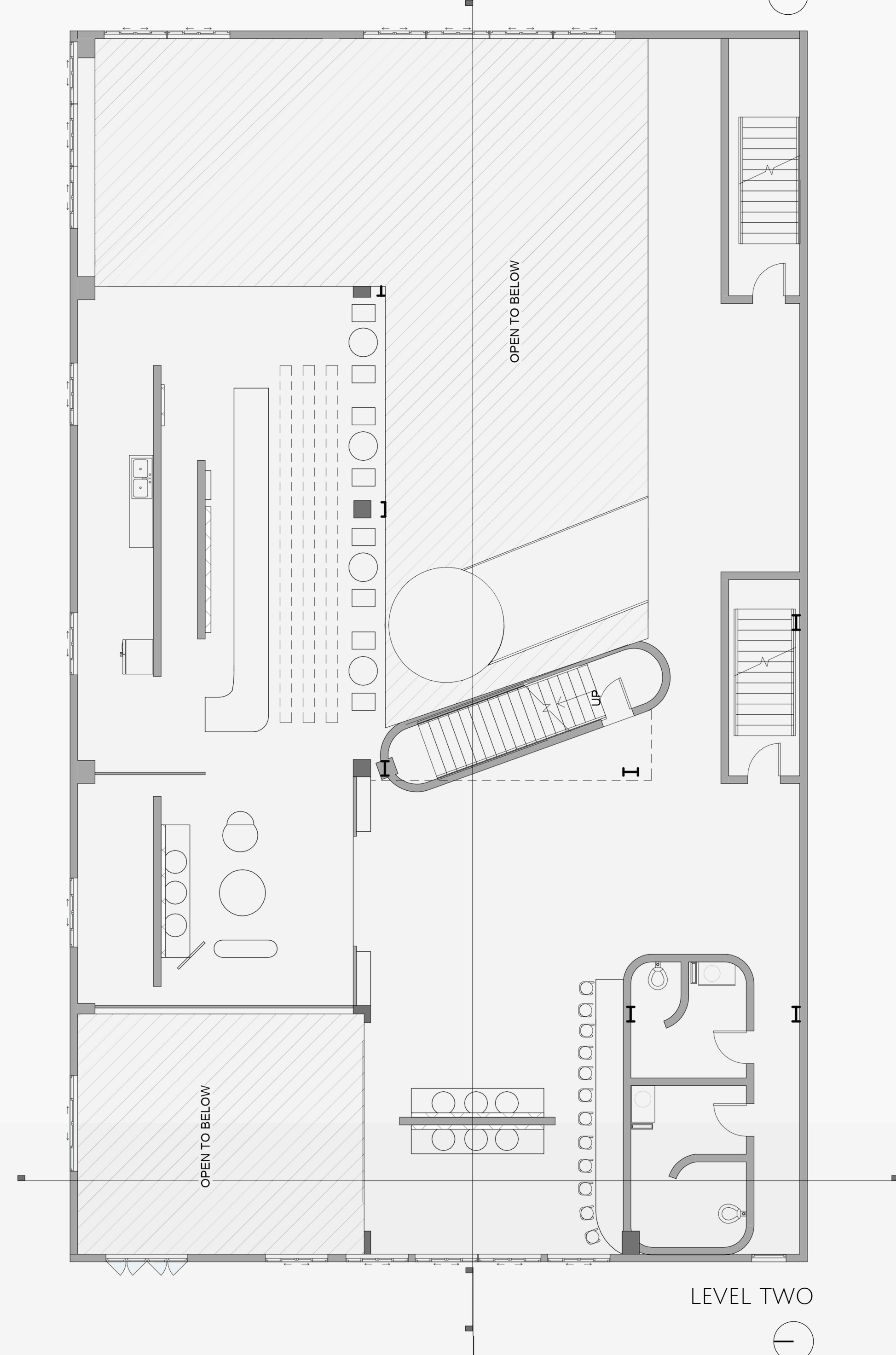
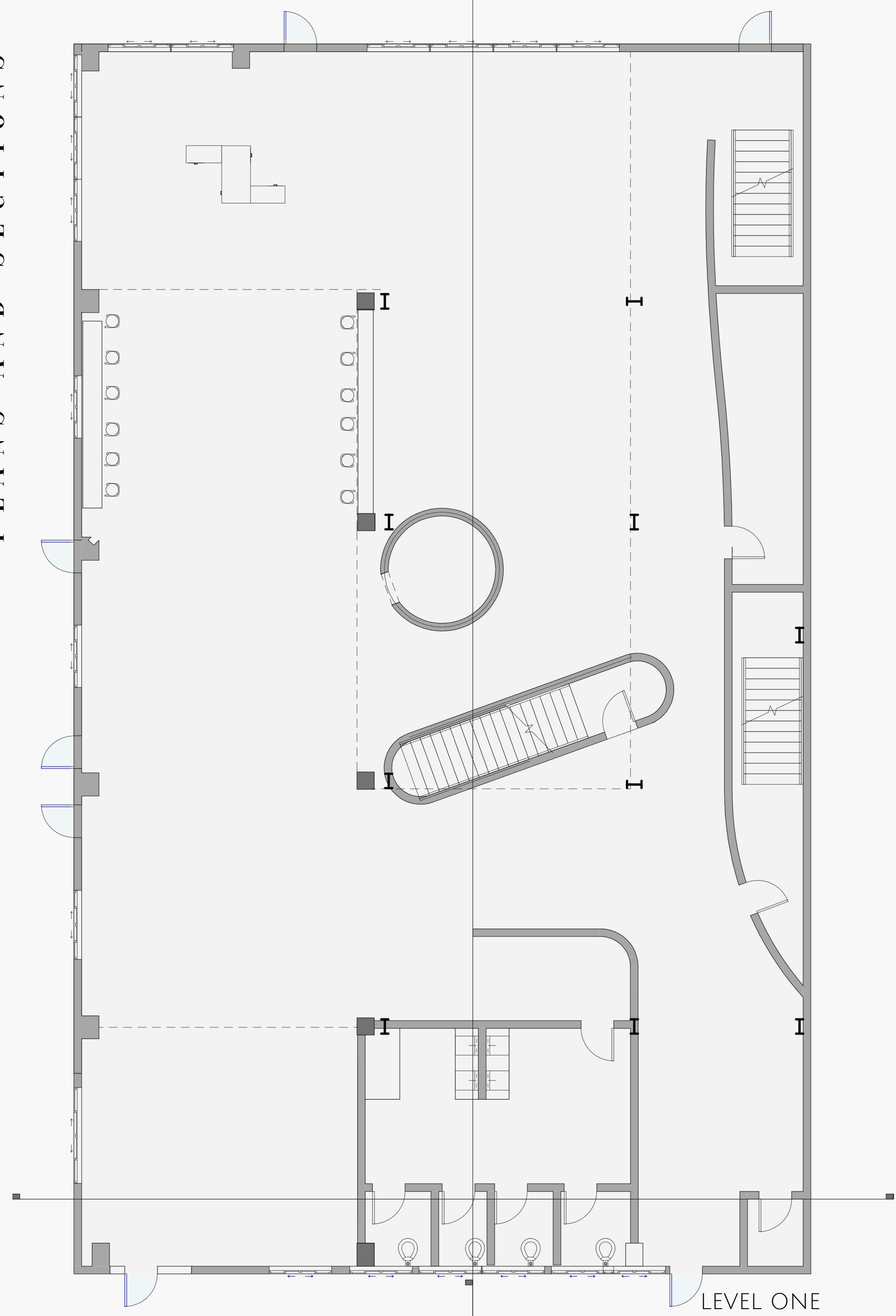


EAST TO WEST
SECTION

STATEMENT OF INTENT

I intend to design a space that celebrates the complexity of society through this time of transition. To create a community that supports and embraces our freedom to be socially undefined. I intend to implement this by developing a space for refuge that enables support, complexity, and transition through spatial design.

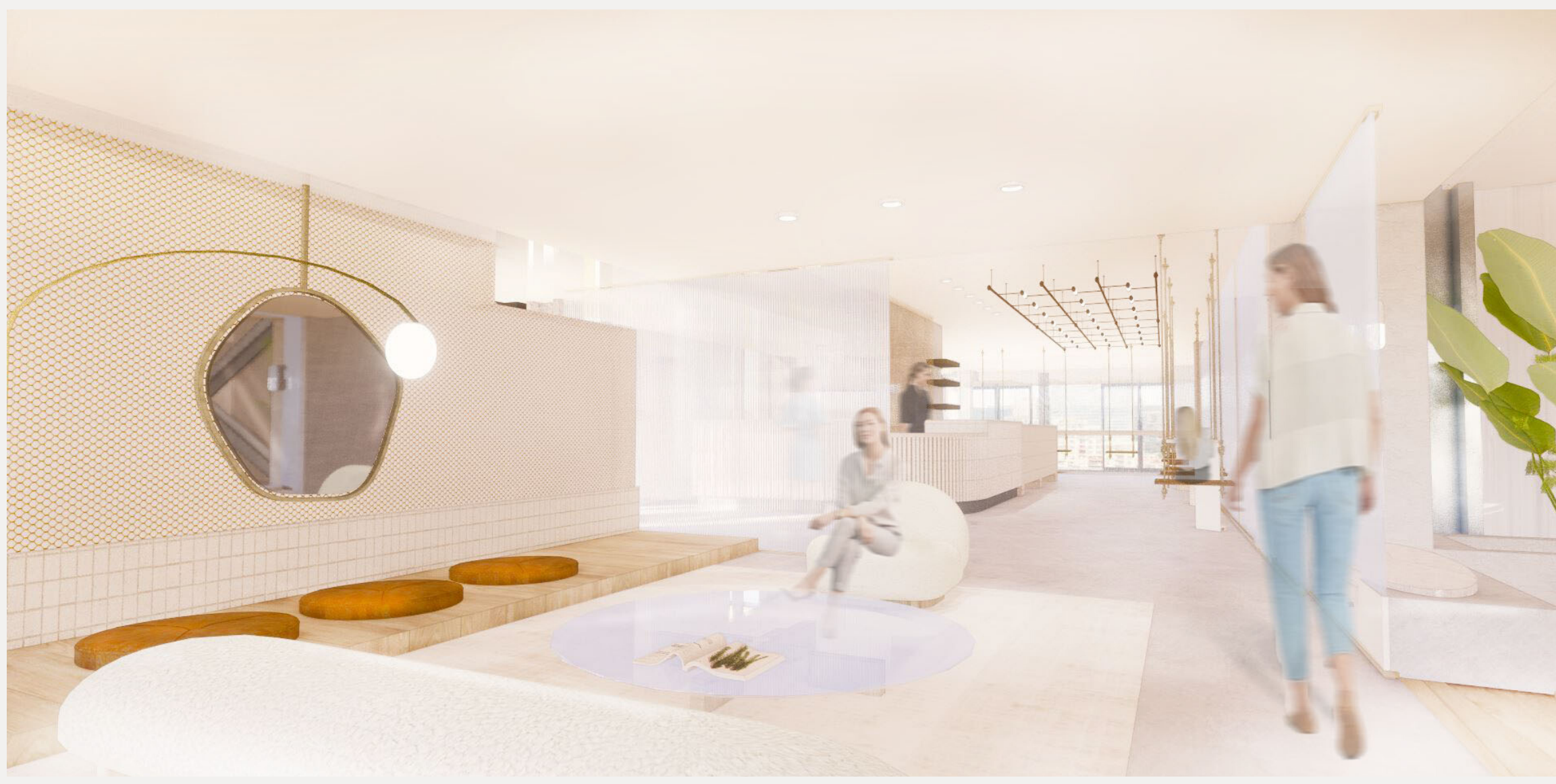
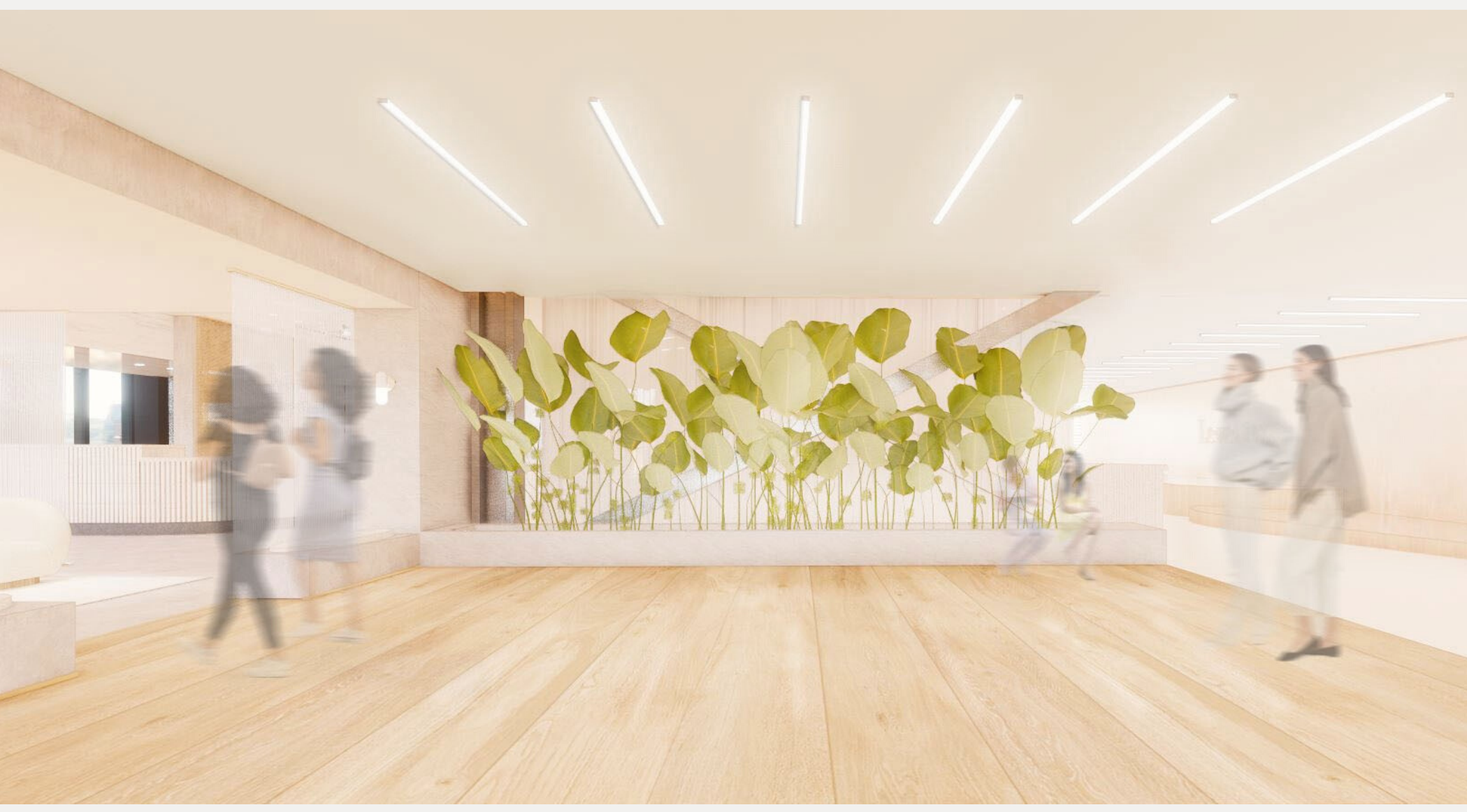
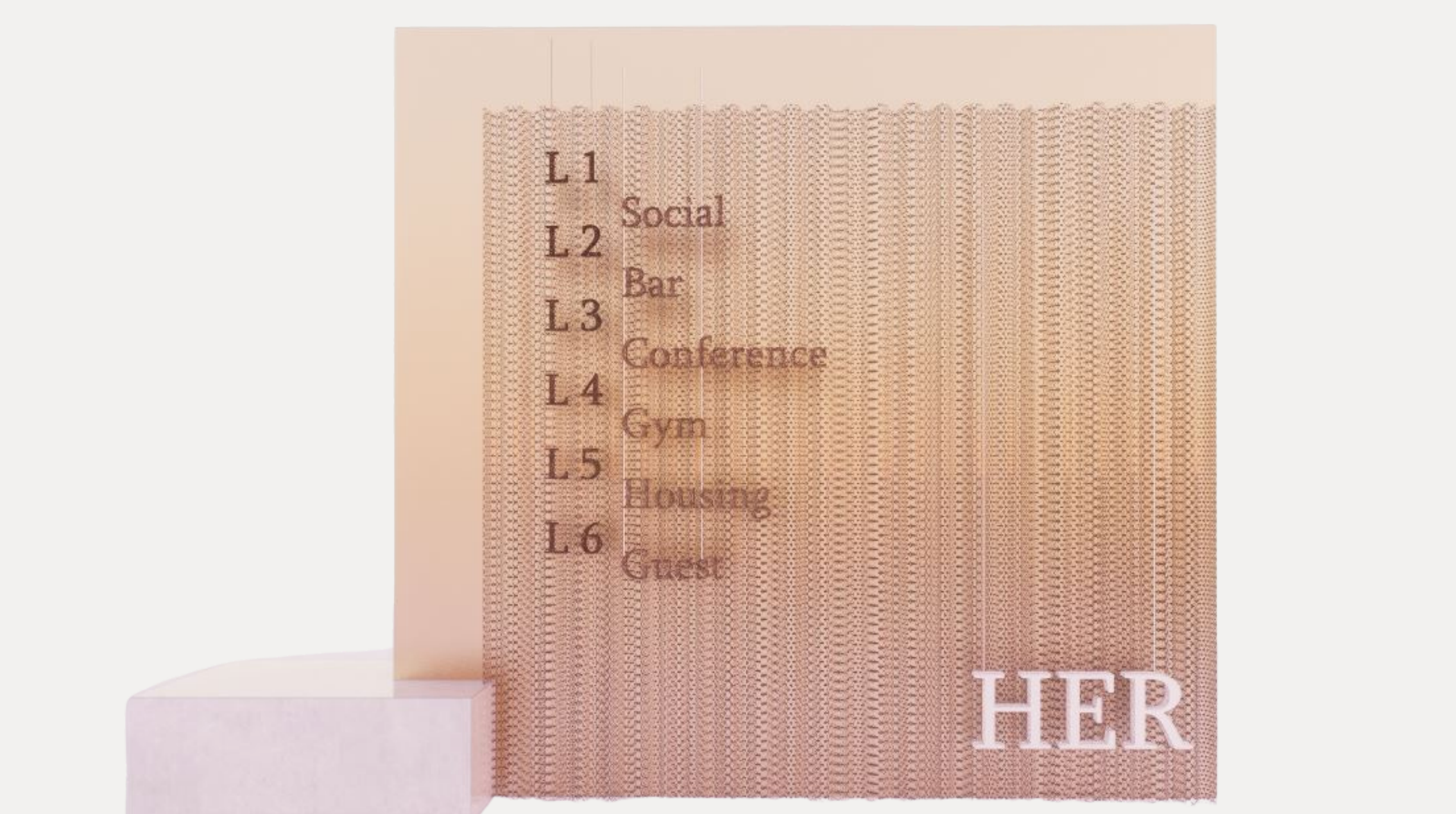






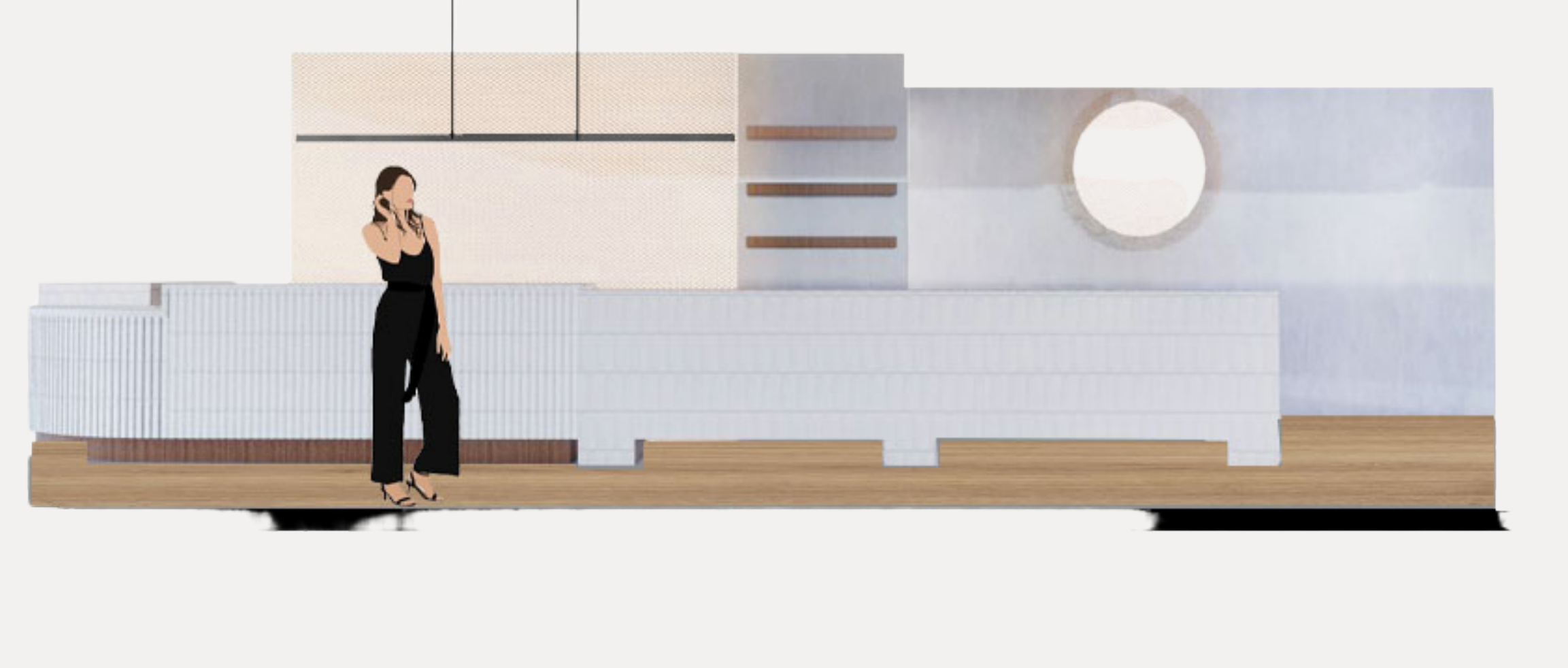
ENTRY SINAGE

WAITING AREA



COMMUNAL KITCHEN

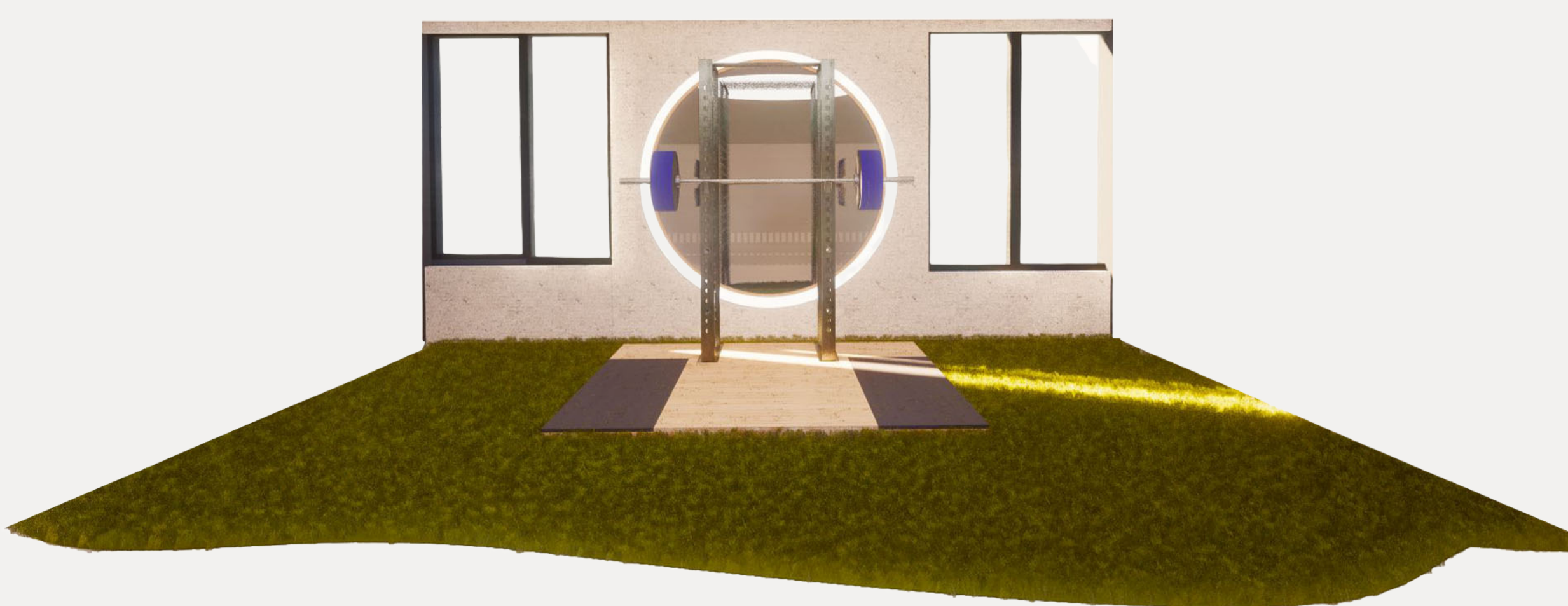
BAR





LIFTING STATION

PRIVACY POD



Thank you

While working through this project I obtained critical insight from the women around me. I feel as if this project paved the way for myself in the future and where I set my sights. I look to improve the current social structure of women in society and how we intersect in the community we pursue to build around us. I found inspiration from all ages and demographics. But mostly from those who I have had the privilege to have grown up around and those who are currently growing up around me. From 86-year-old grandma who came from Sicily on a boat to start her own butcher shop in Boston. To my two-year-old niece who insists on never dancing to the beat. And to my sister in law who moved her whole life from France to follow her heart to LA. It is the women around me who constantly continue to motivate me in pushing the boundaries for the future. I look to articulate that we are no longer malleable to the social construct of society, we that will continue to be as loud as we want, and we will continue to dream without limitation. I hope that my project has amplified my pursuits sufficiently and that you have enjoyed **Her**.

