

# Battle From Within

## POV:

As a young child, I was in and out of a hospital for 18 months. This experience was a huge event in my life. In those 18 months, I went through treatments, endured pain and had to grasp ideas that most children do not have to deal with or understand. I was fighting a battle and continued to fight that battle for years after the ordeal. The original battle started as my body and the chemo vs. the cancer. It was a battle that children that young should not have to experience. The shots, the surgeries, the medicines that made you feel sick or made you feel pain, it was all hard to understand and cope with as a 5-year-old. Stemming from the same original battle came yet another battle, where I had to fight to be normal with restrictions and still many hospital visits. These inner battles were mine and only mine, but everyone goes through their own versions.

## Intent and Qualifiers:

I intend to create a space that represents the inner battles that we face within our lives using these qualifiers:

1. Clustered Forms
2. Asymmetry
3. Solid and Void

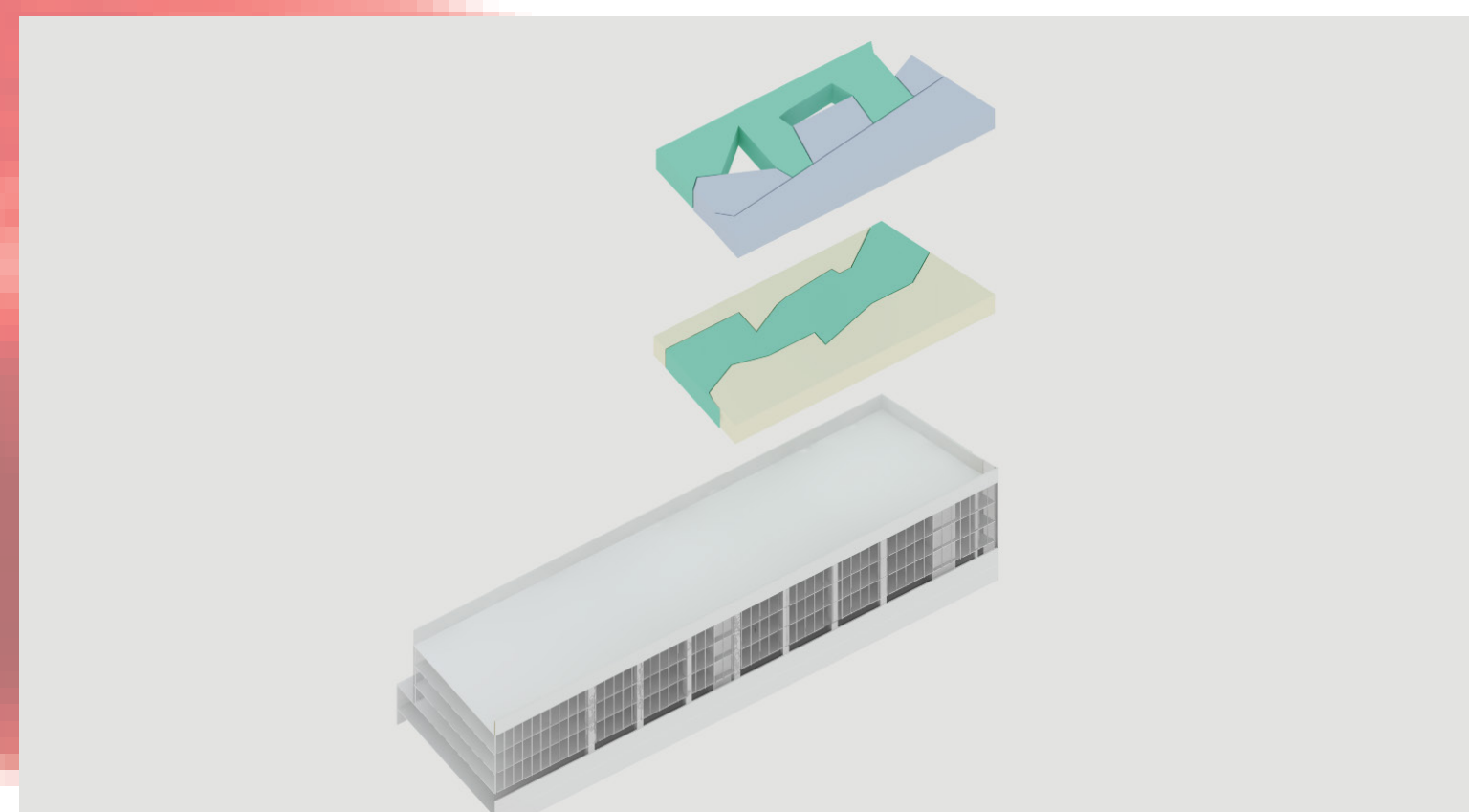
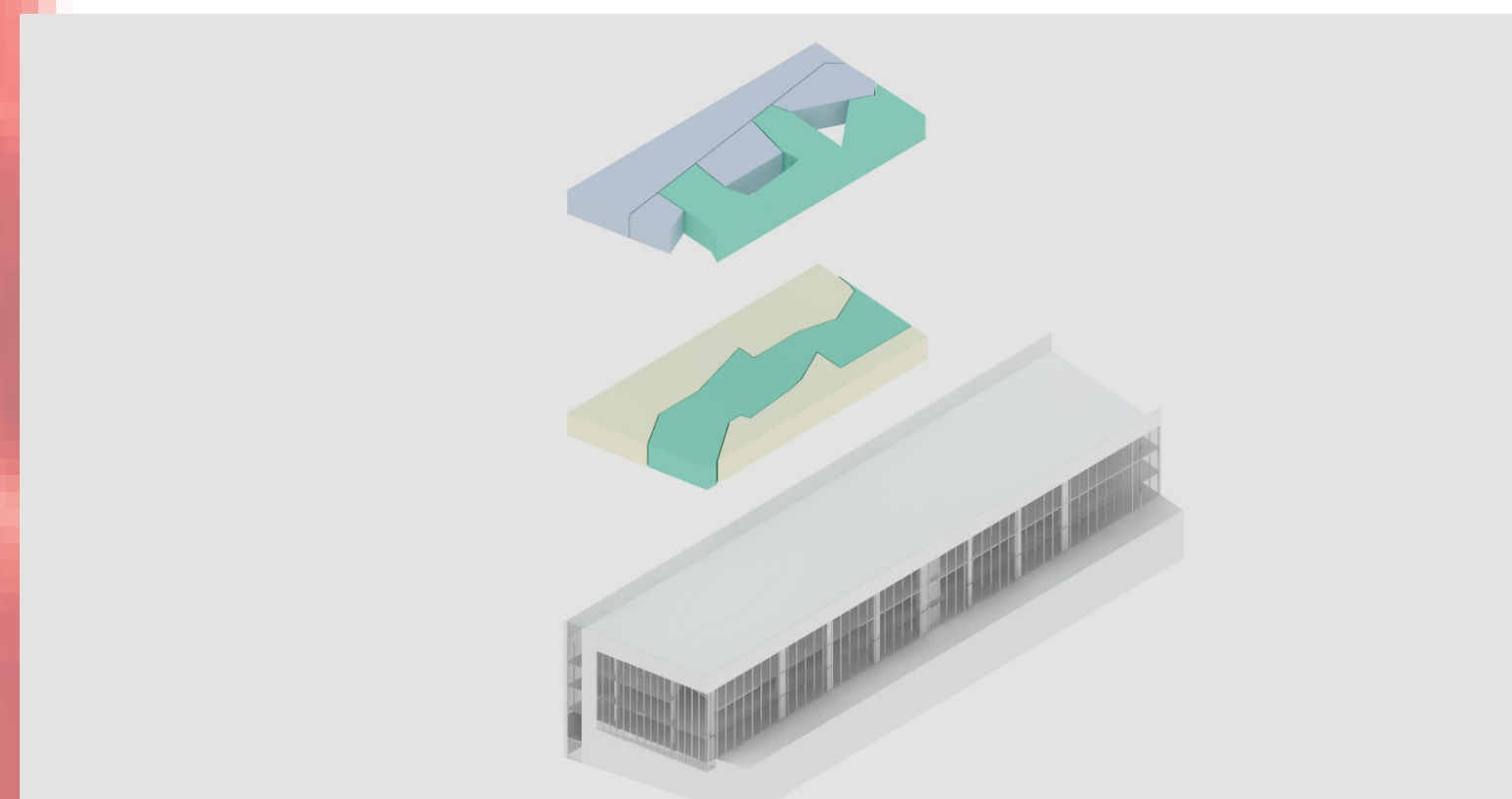
## Project Vehicle:

Creating a Pediatric Oncology Unit in which a child does not have to be so afraid of the doctor and they can play and have fun like a normal child. A place where they can face their inner battles and still be allowed to be a normal child. Spaces that encourage play and childhood, rather than treatment and being sick. Spaces that relieve the stress of fighting both consciously and subconsciously.

## Site Requirements:

The site must be located within an existing hospital, that hospital must already have facilities to incorporate an oncology wing including electrical, plumbing, HVAC, etc. The hospital must be located within Seattle. There must be ADA accommodations to reach the area in which the oncology wing is to be placed, this includes an elevator. There also must be stairs and emergency exits sufficient to the building size, codes, and city regulations. The space must be large enough to accommodate an oncology wing and all its parts. The building/space must have or be able to support a radiology unit, including MRI machines, CT scanners, Ultrasound machines, etc.

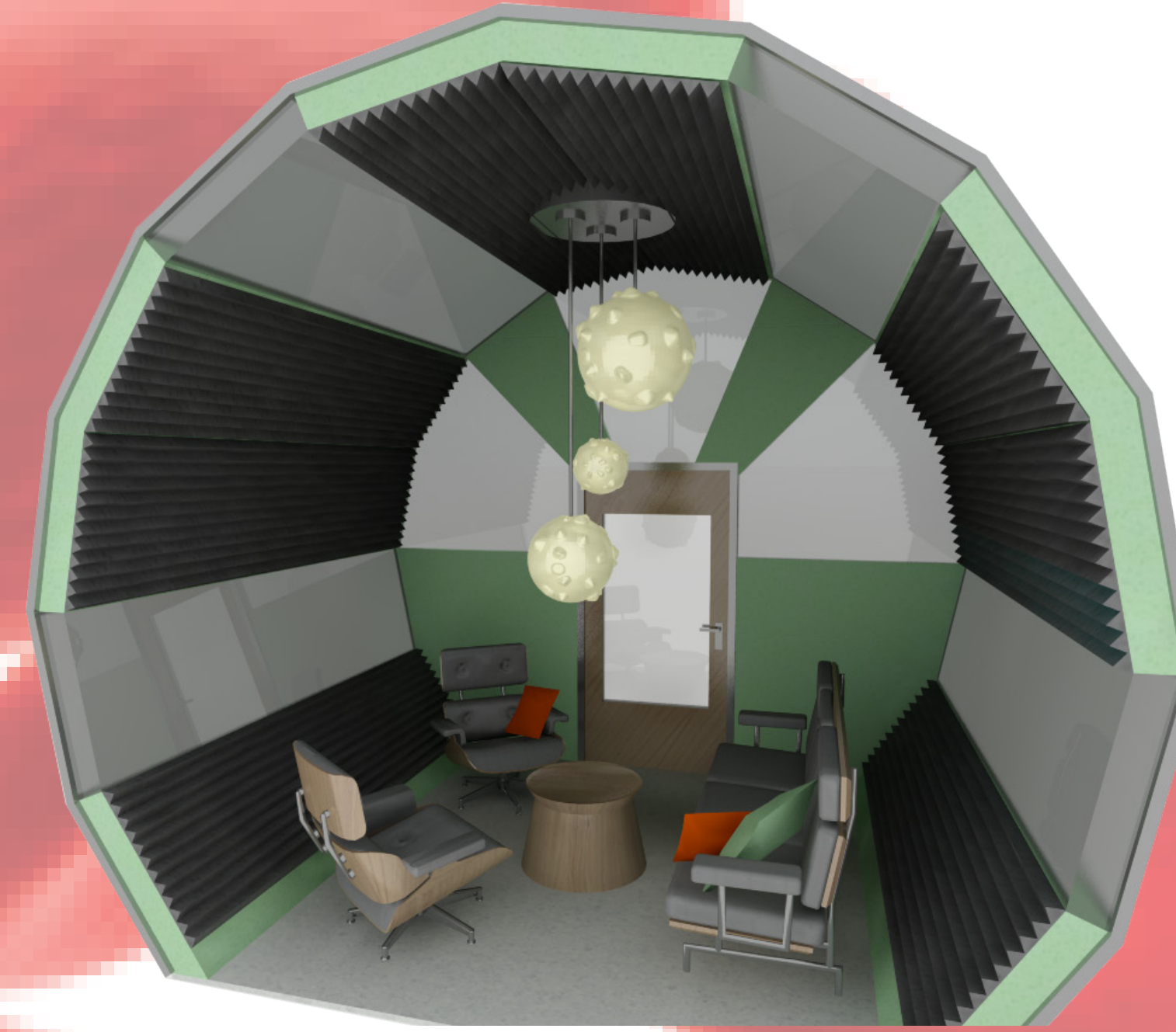
## Location:



## My Program:

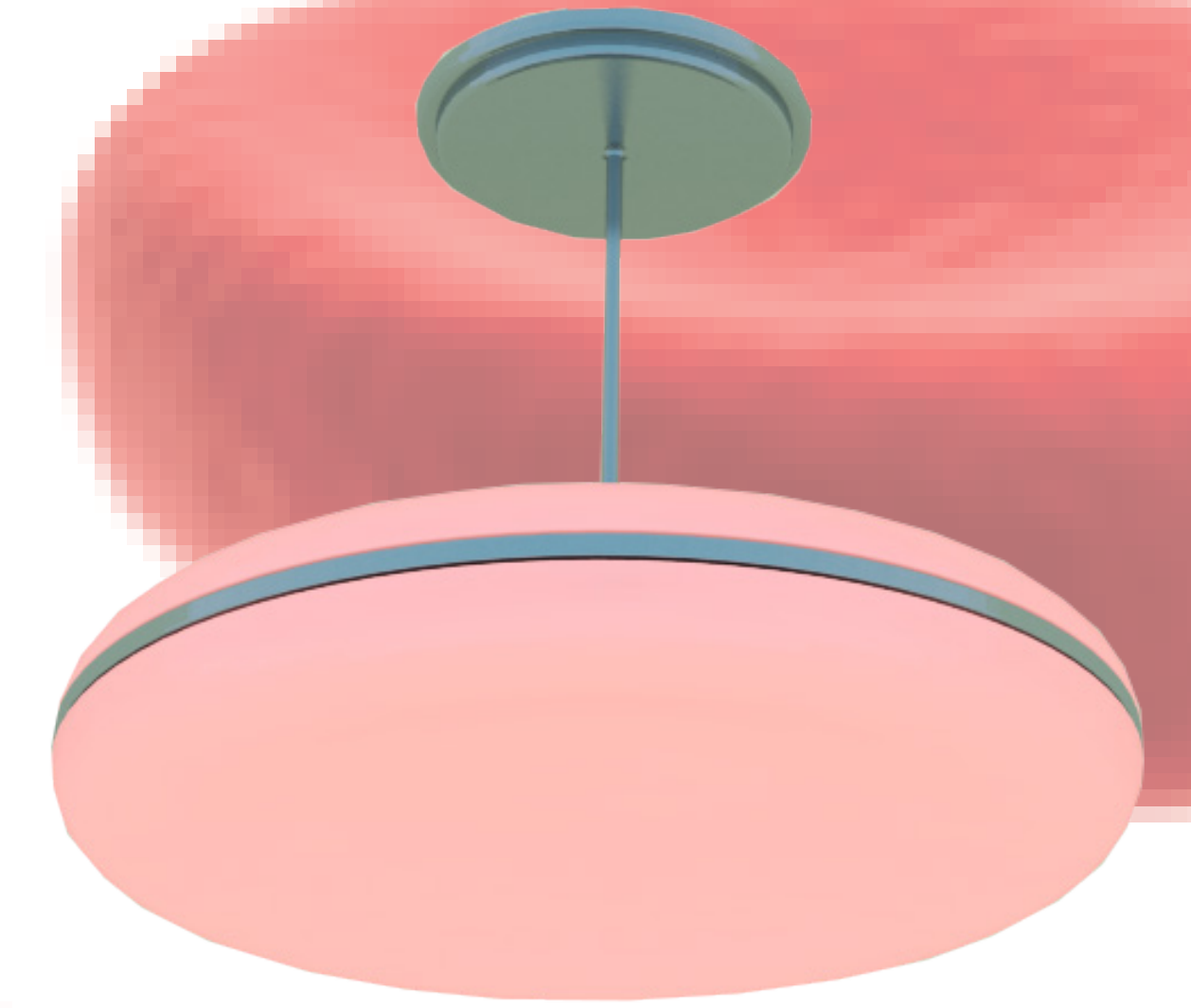
Oncology - Chemotherapy	Oncology - Imaging
Entry/Reception	Entry/Reception
Reception - 1	Reception - 1
Waiting - 1	Waiting - 1
Play Area - 1	Play Area - 1
Treatment Areas	CT Scanning
Infusion (Public) - 1	Computer Room - 1
Infusion (Private) - 6	CT Scanner Room - 1
Consult - 2	Prep Room - 1
Procedure - 1	Patient Bay - 1
Treatment - 1	Change Room - 1
Shower ADA - 1	General X-Ray
Toilet ADA - 1	X-Ray Room - 1
Support Areas	Day Light Processing - 1
Emergency Shower - 1	Patient Bay - 1
Handwash Station - 2	MRI
Linen Bay - 3	MRI Scanner Room - 1
Mobile Equipment - 3	Control Room - 1
Wheel Chair Park - 3	Prep Room - 1
Clean Utility - 1	Patient Bay - 1
Dirty Utility - 1	Support Areas
Disposal Room - 1	Linen - 2
Staff Station - 3	Handwash - 2
Storage - 1	Wheel Chair Park - 2
Admin/Offices	Clean Utility - 1
Workstations - 6	Dirty Utility - 1
Meeting Room - 1	Disposal Room - 1
Office - 1	Toilet - 2
Staff Areas	Staff Areas
Staff Shower - 3	Radiologist Room - 2
Staff Toilet - 3	Office/ Workstation - 4
Staff Room - 1	Staff Room/ Meeting - 1
	Staff Shower - 3
	Staff Toilet - 2

# Sections/ Location Map

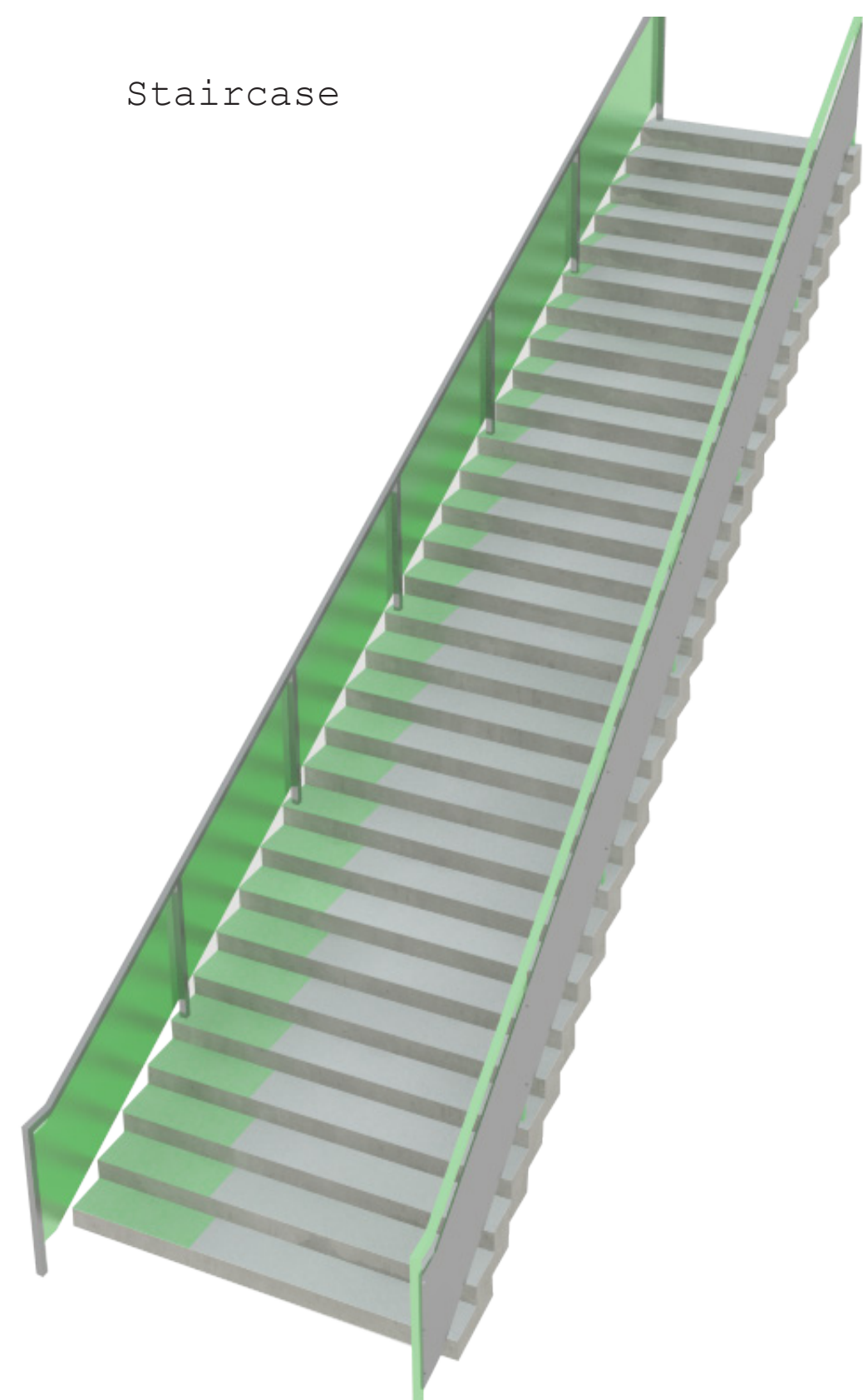


Privacy Pod

Red Blood Cell Lamp



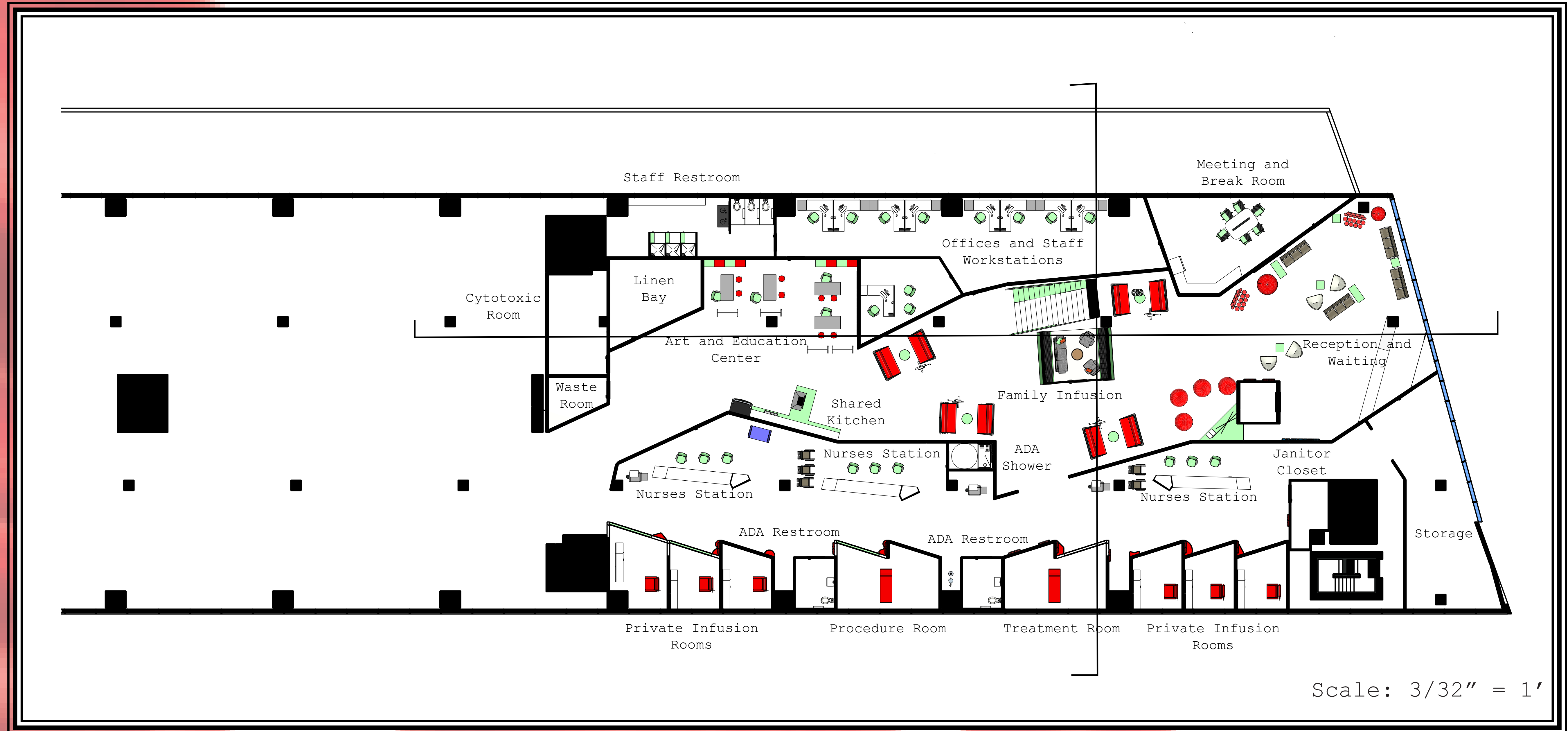
Staircase

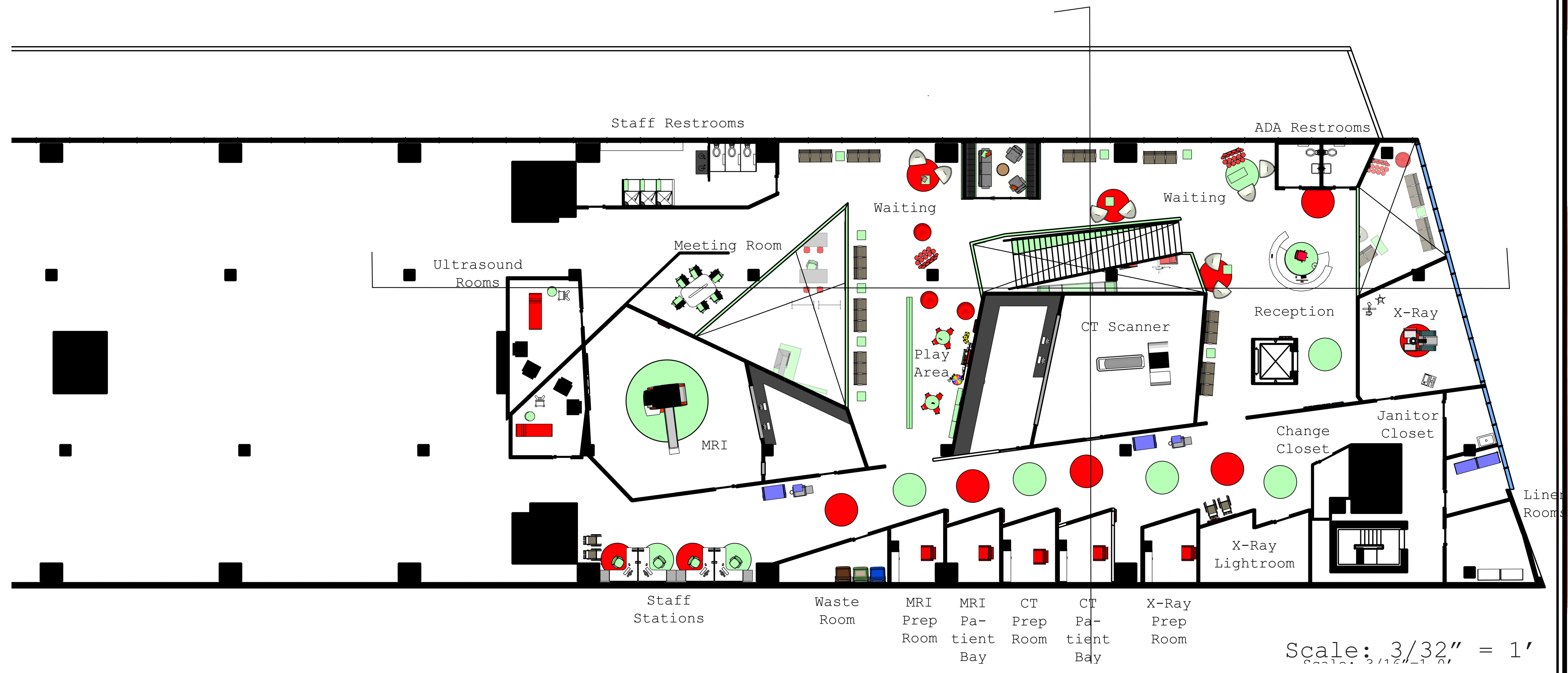


White Blood Cell Lamp



# Plans





# Renders

