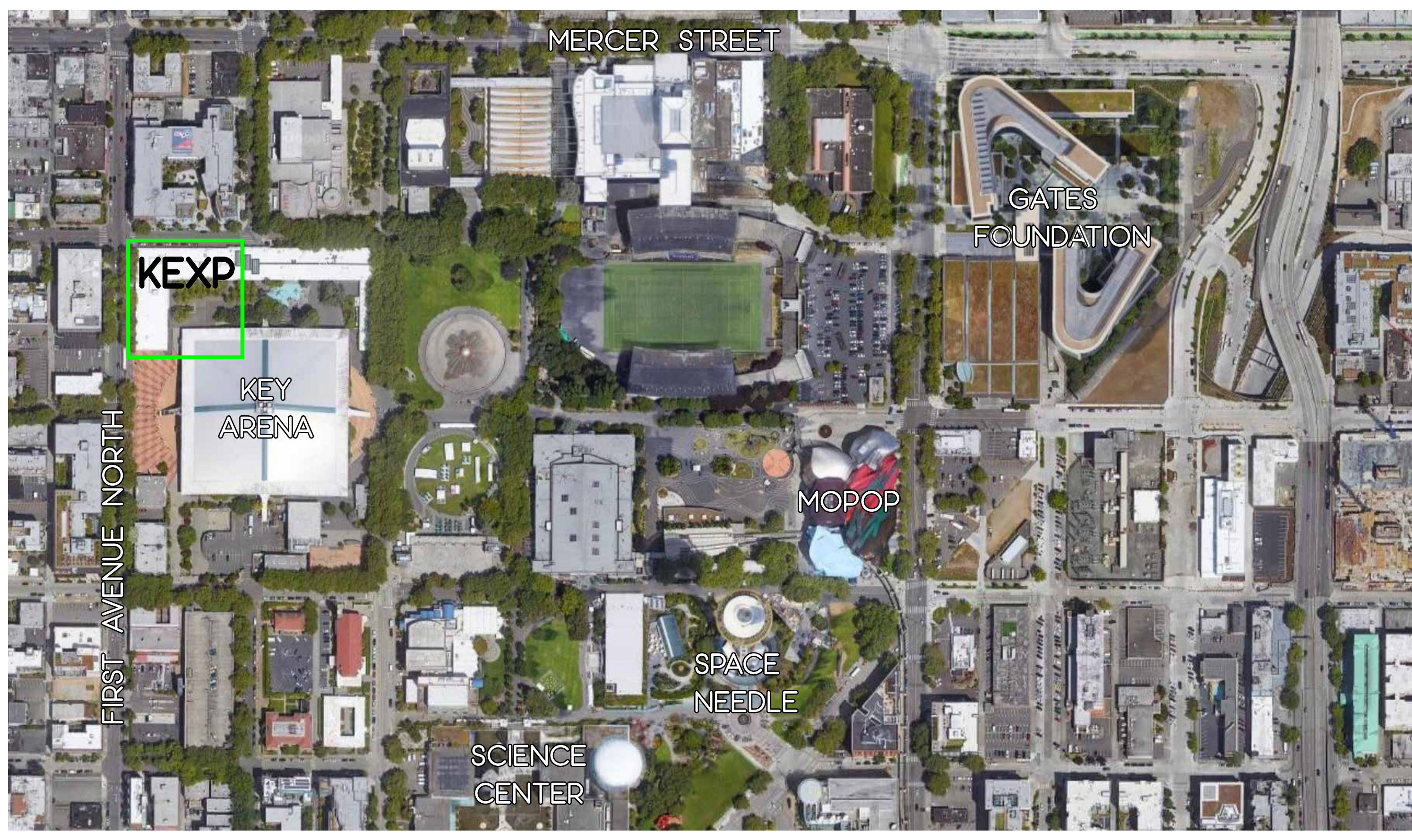
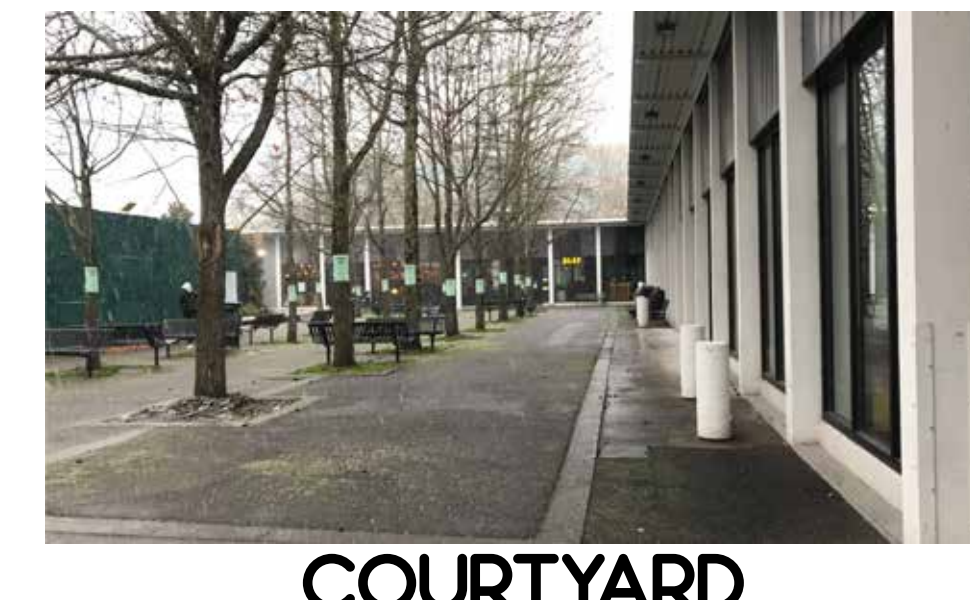


REDEFINE THE URBAN HUMAN-ANIMAL INTERACTION

A place to improve our well-being and the well-being of others in mutually beneficial and meaningful ways.



ENTRANCE



COURTYARD



EXTERIOR PANELS



S I T E

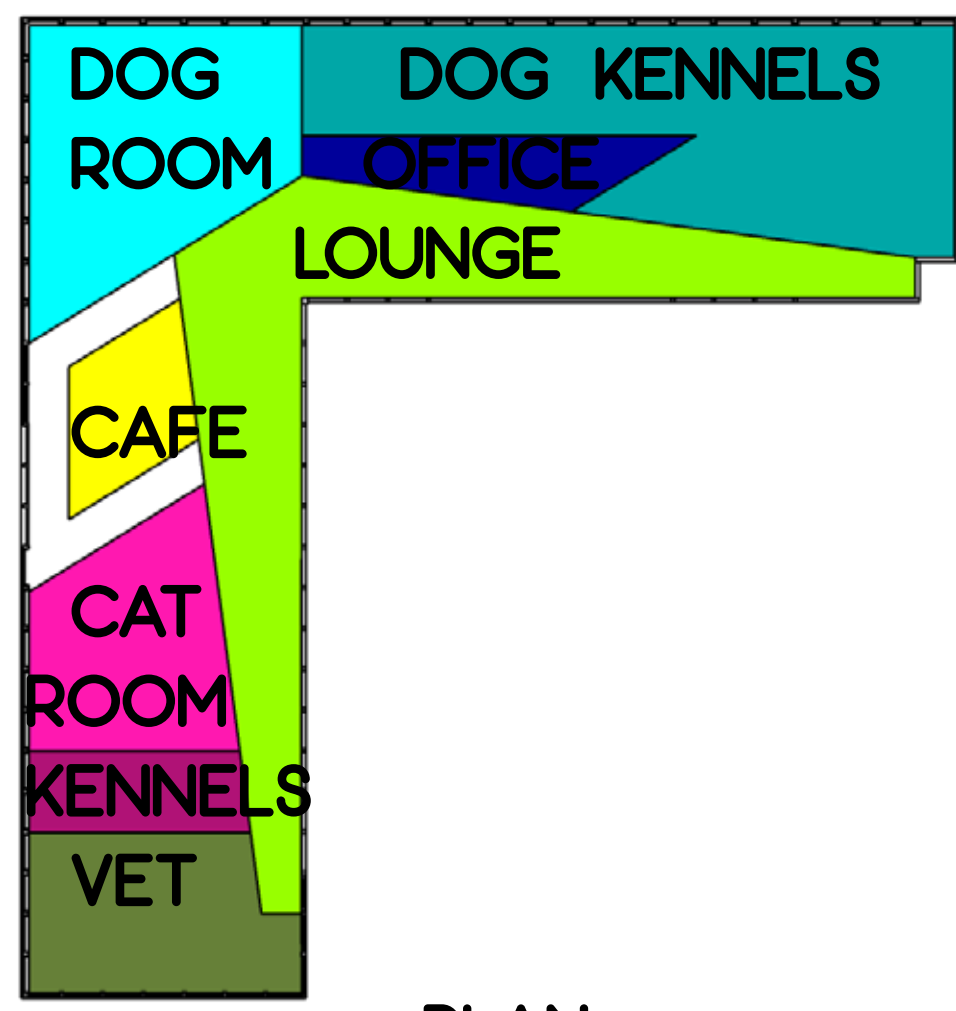
KEXP, SEATTLE CENTER
472 FIRST AVENUE NORTH
SEATTLE WA 98109

Activating a space that was forgotten at the northwest corner of the Seattle Center, connecting it to lower Queen Anne and the city as a whole.

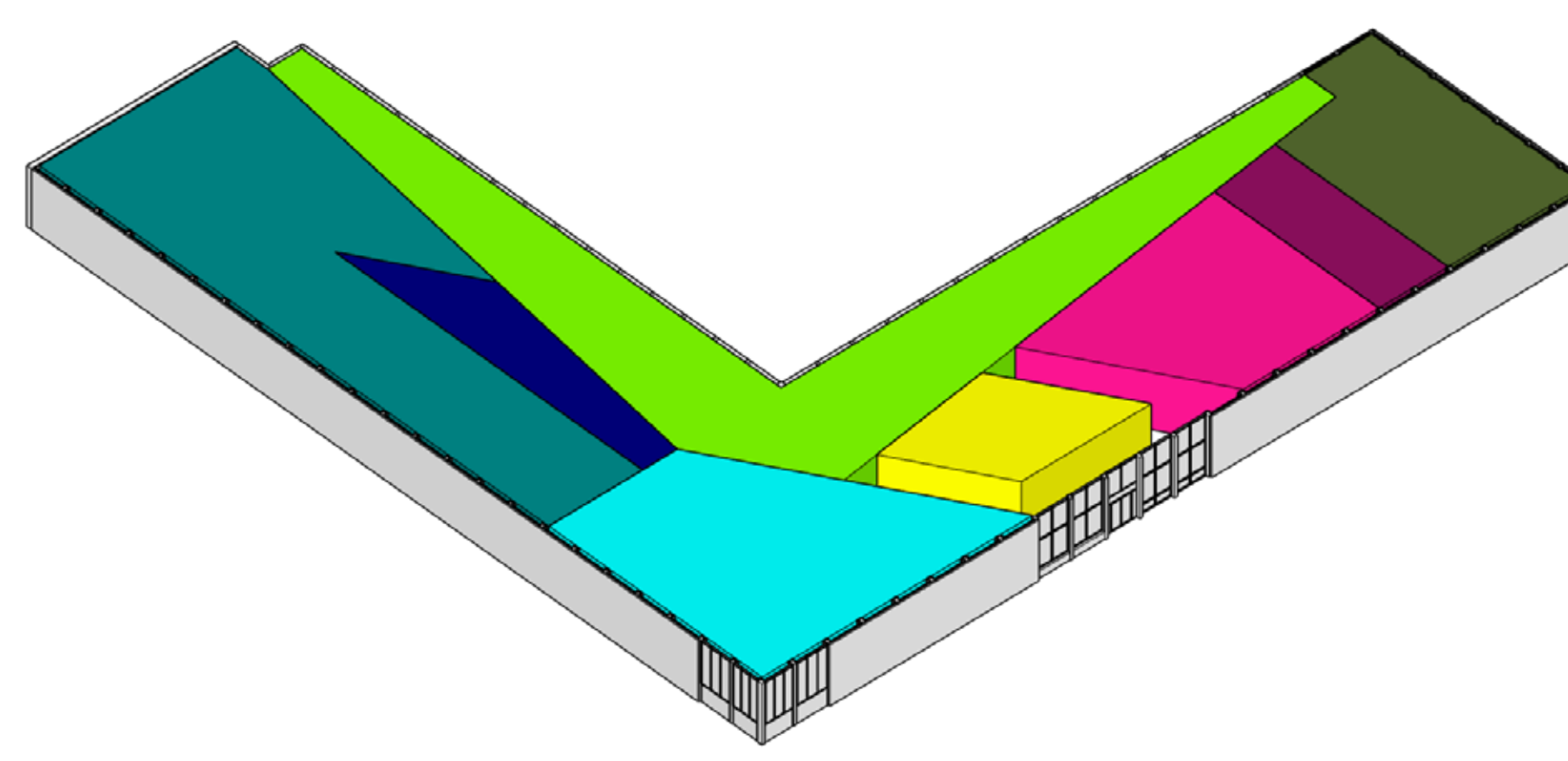
PROJECT VEHICLE

Redefine the animal shelter and make it an uplifting place to foster relationships between people and animals. This new shelter will welcome the public to improve their lives and the lives of homeless pets in mutually beneficial and meaningful ways. It will include adoption services, educational programs, open play facility, and gathering space with café.

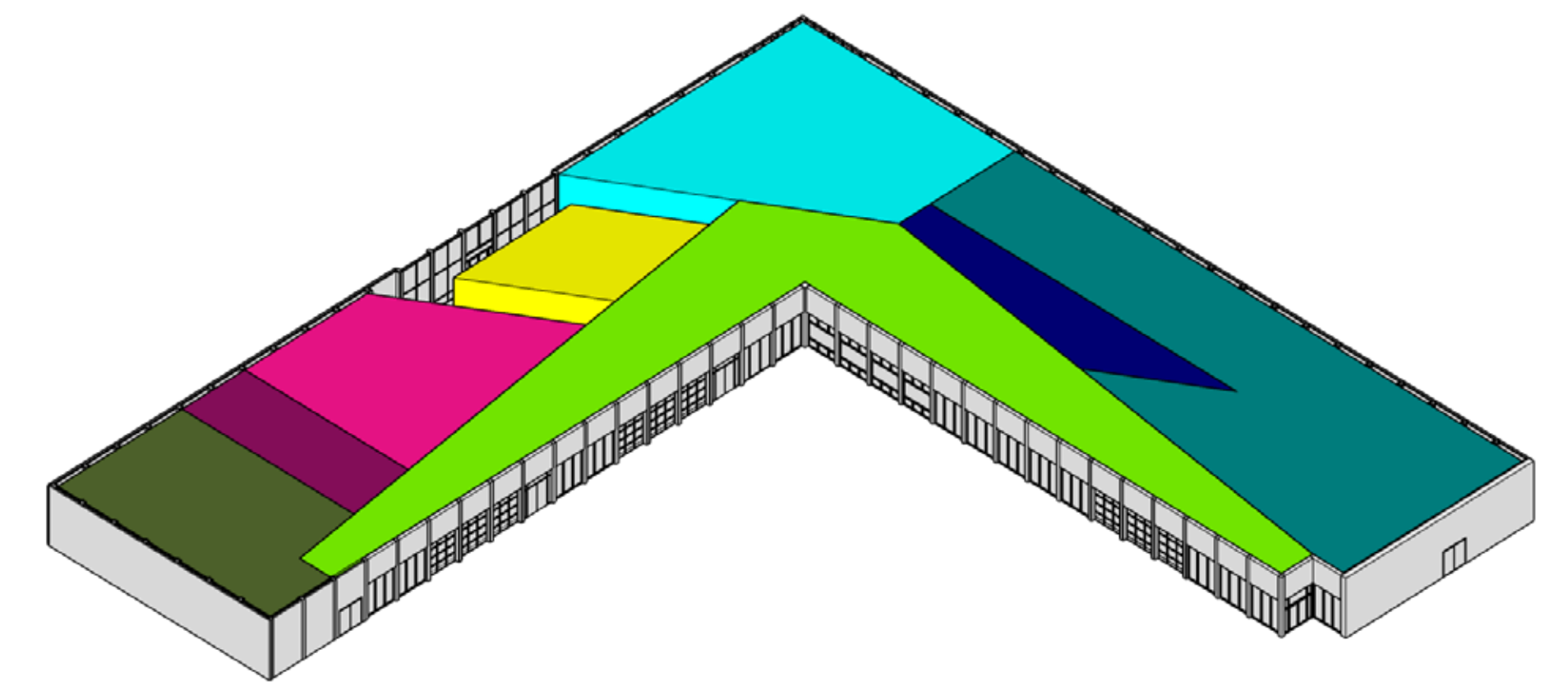
BLOCK DIAGRAMS



PLAN



SOUTHEAST VIEW



NORTHWEST VIEW

QUALIFIERS

EXPANSION AND COMPRESSION

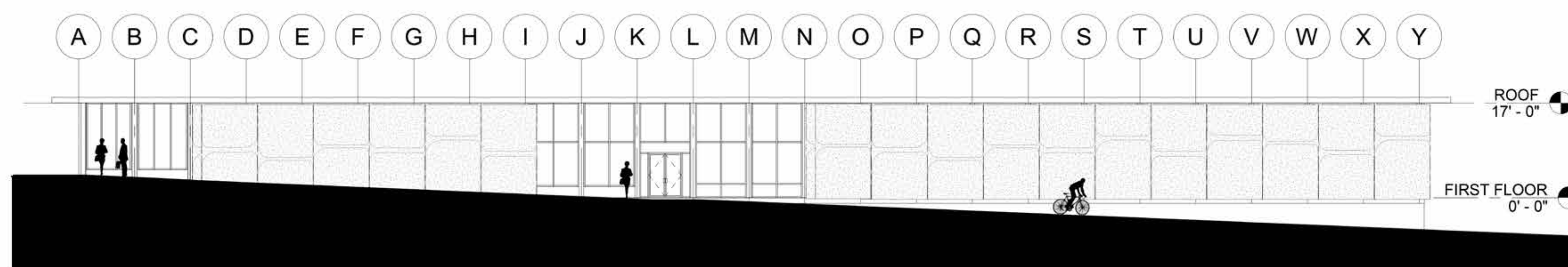
The building is open to the community and has a welcoming main entry as well as three other entrances that open to the Seattle Center. Large open dog and cat rooms encourage play. Smaller areas house pets and allow for quiet contemplation and stress reduction.

CONNECTION

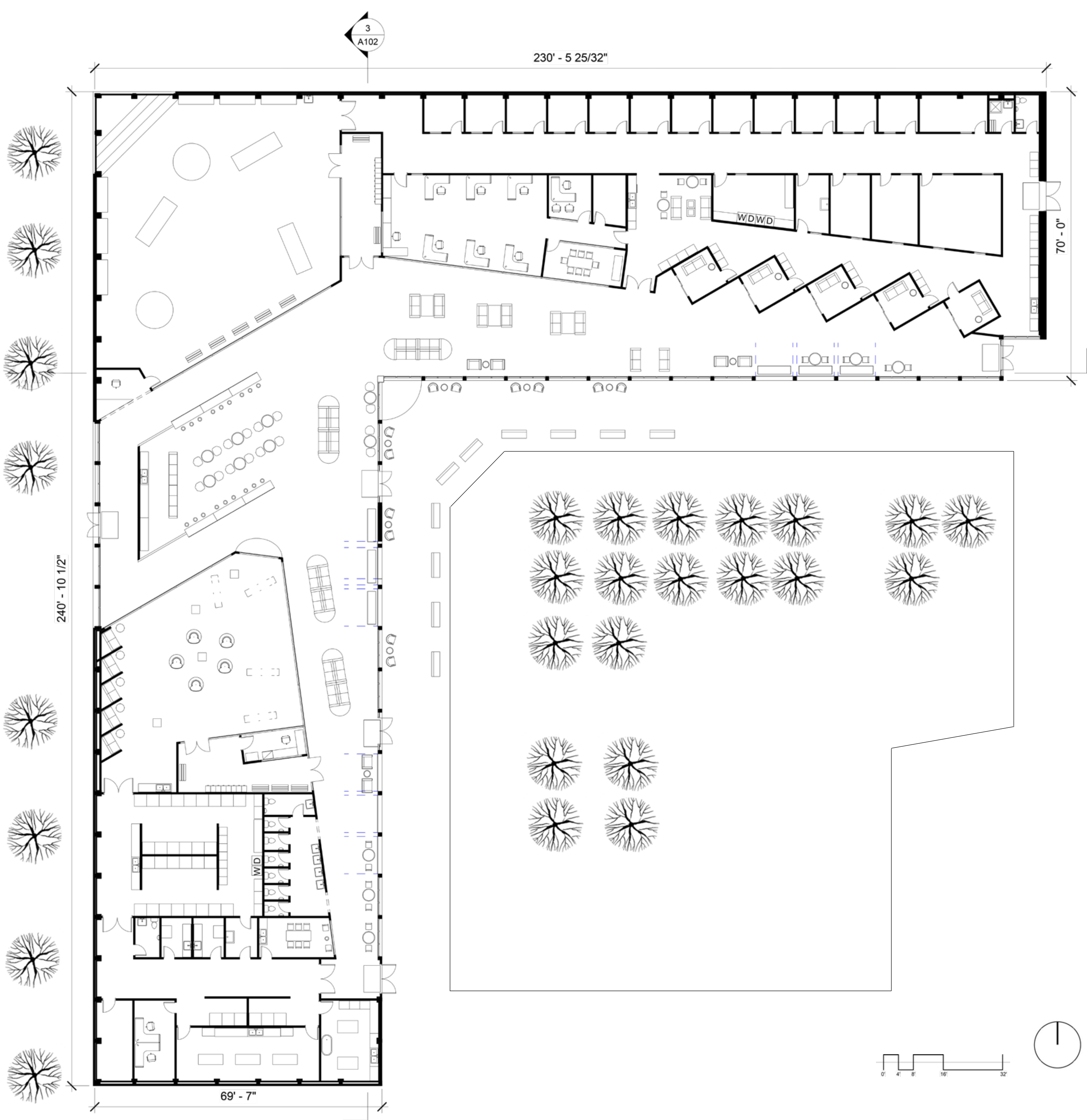
Creating an outlet to help urban dwellers connect with shelter pets and other animal lovers.

FLOW

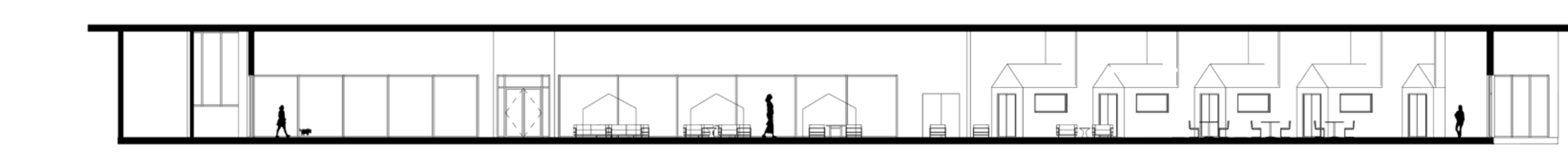
The space is open and colorful so the public can easily find their way through the space, as well as keeping back areas private. Careful attention has been paid to airflow and circulation to reduce airborne pathogens and odor. We hope to promote living in the moment like our pet friends do.



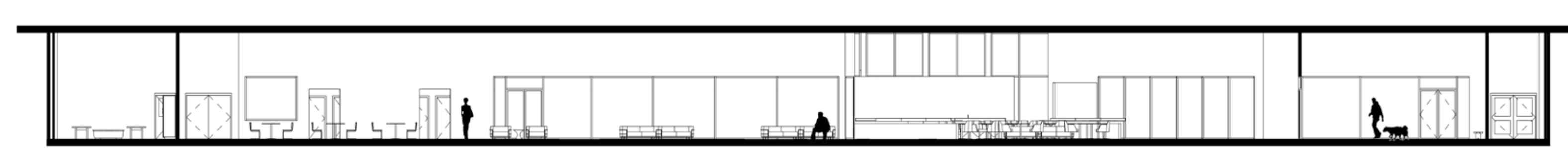
1 WEST ELEVATION
1/16" = 1'-0"



1 FIRST FLOOR
1/16" = 1'-0"



2 SECTION NORTH
1/16" = 1'-0"



3 SECTION WEST
1/16" = 1'-0"

PROGRAM

USER EXPERIENCE
HELP PLAY CONNECT

Welcoming Entrance and Lounge to Relax and Observe 10% = 2500sf	
Office Space 8% = 2000sf	Office Space 8% = 2000sf
Cafe for Treats 2% = 500sf	
Dog Kennels for Respite 25% = 6250sf	
Spacious Dog and Human Play Area 20% = 5000sf	
Cat Kennels 5% = 1250sf	
Spacious Cat and Human Play Area 5% = 1250sf	
Grooming for Wellness 2%	
Grooming for Wellness = 500sf	
Educational Programs to Better Human-Animal Interactions 4% = 1000sf	
Food Prep for Nourishment 2%	
Food Prep for Nourishment 500sf	
Vet Services for Wellness 10% = 2500sf	
Quiet One-on-One Areas 2% = 500sf	
W/C 1% = 250sf	

Diagram 1 Space budget is approximate for 85000 square foot space

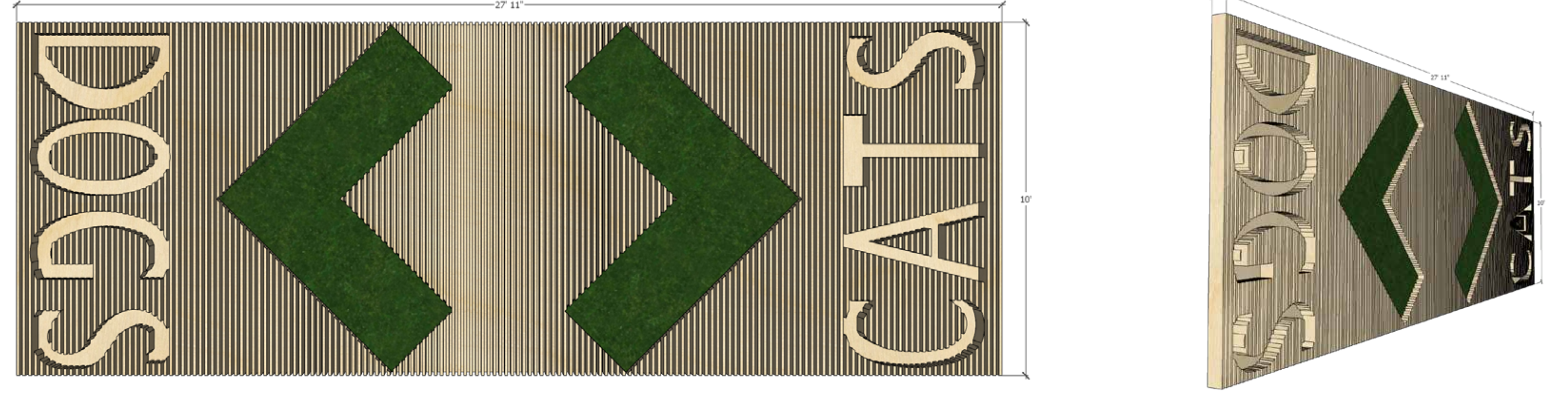
INSPIRATION PHOTOS



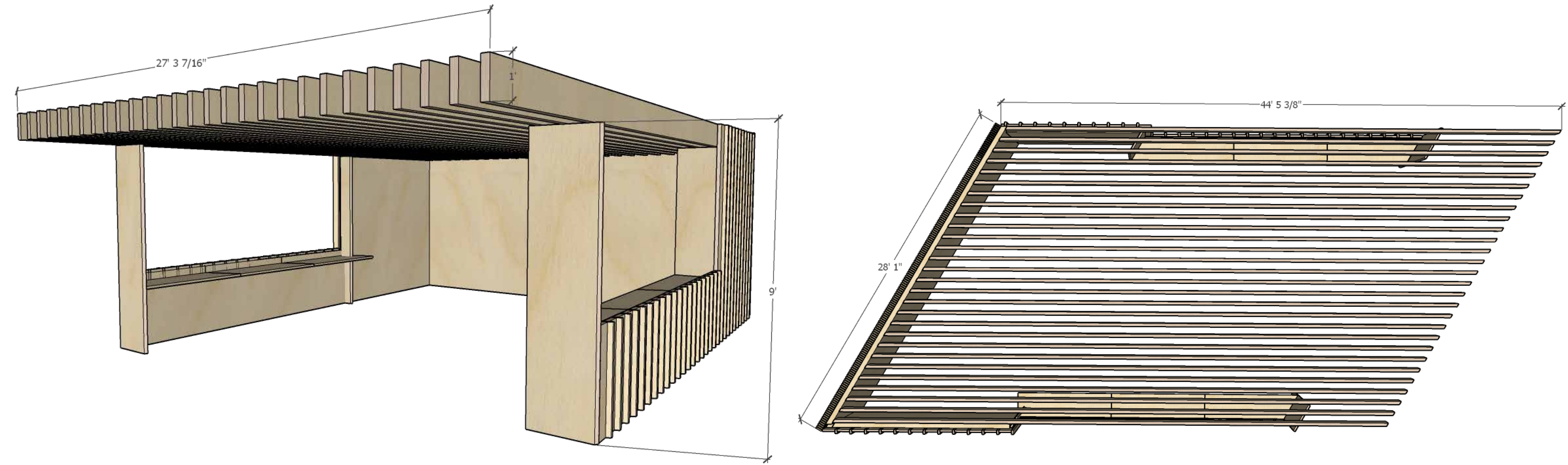
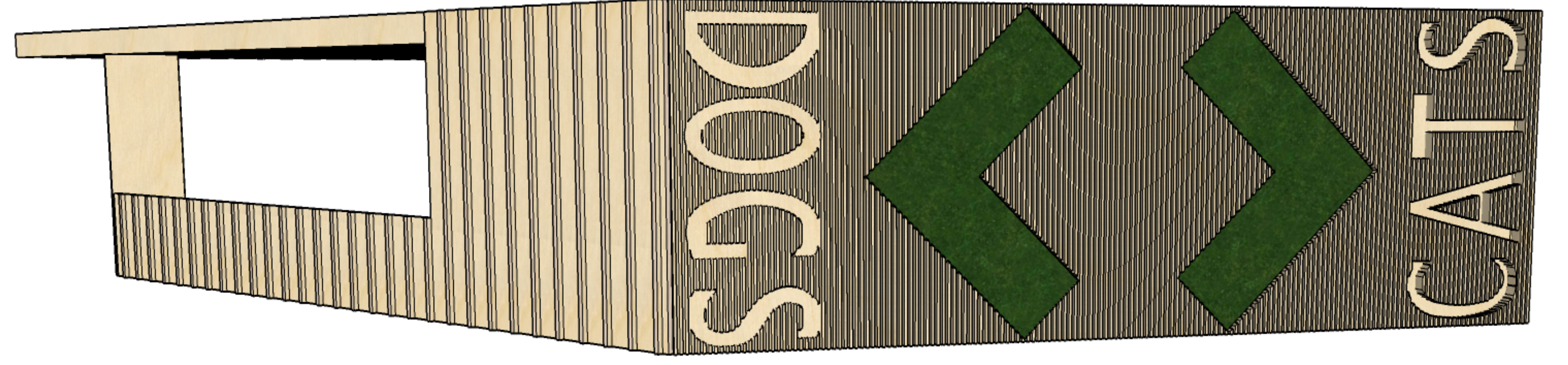
D E T A I L S



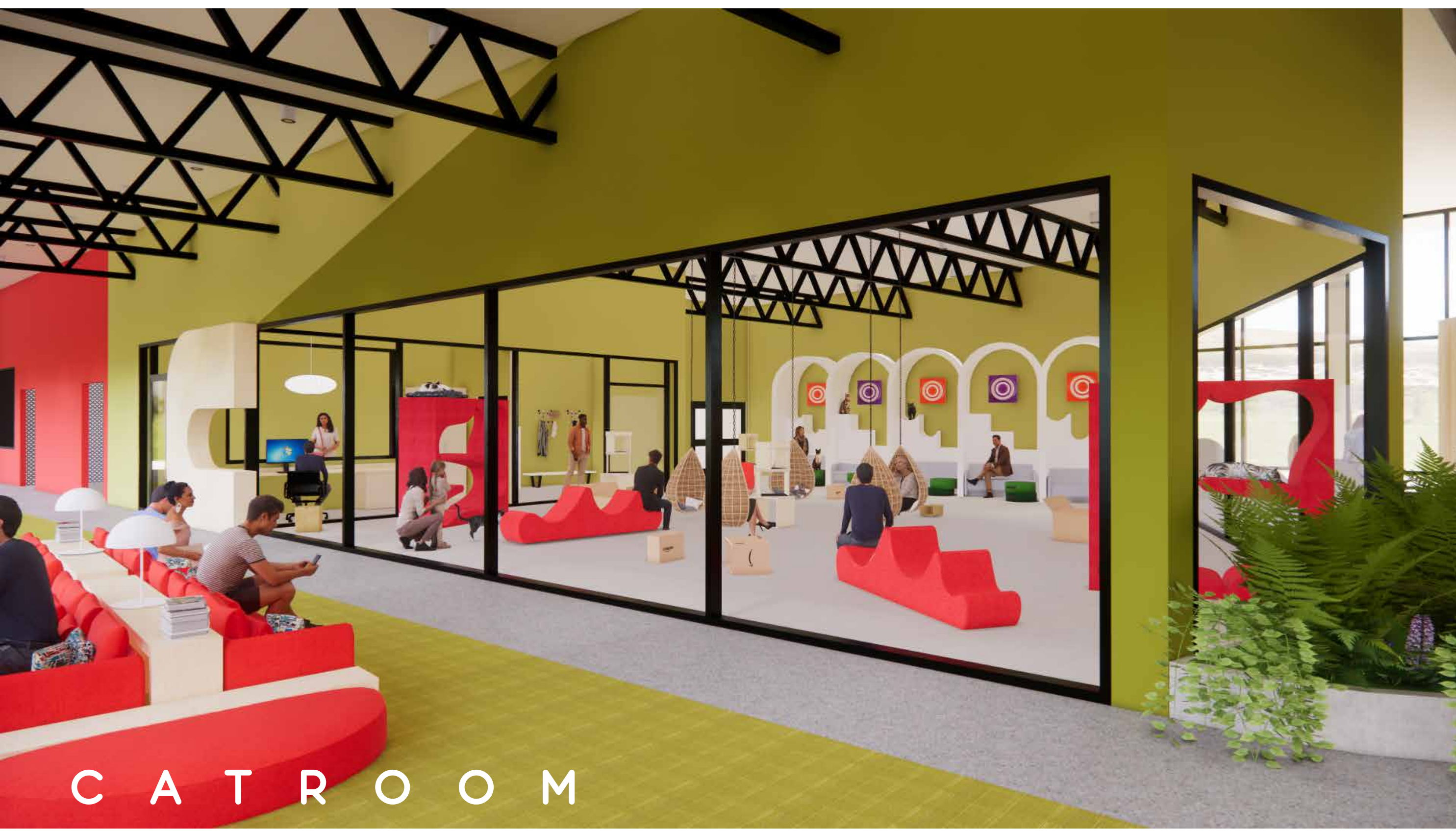
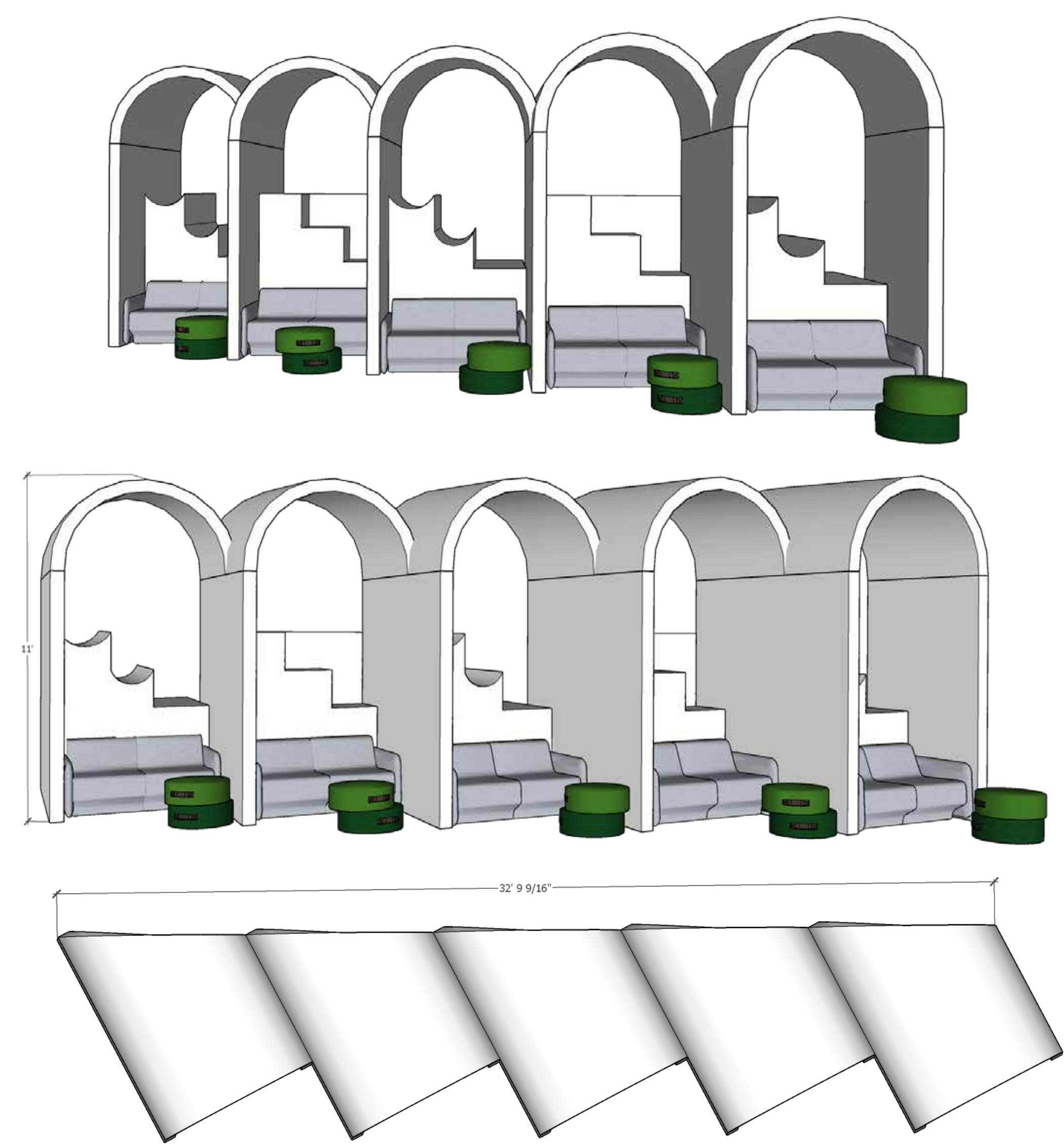
ENTRY SIGN



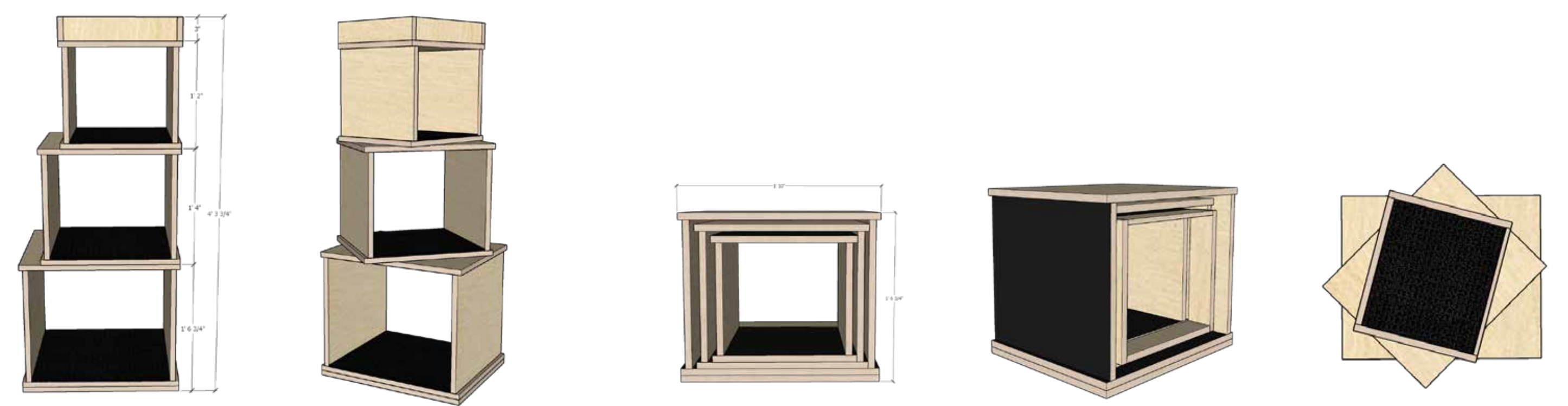
CAFE SURROUND



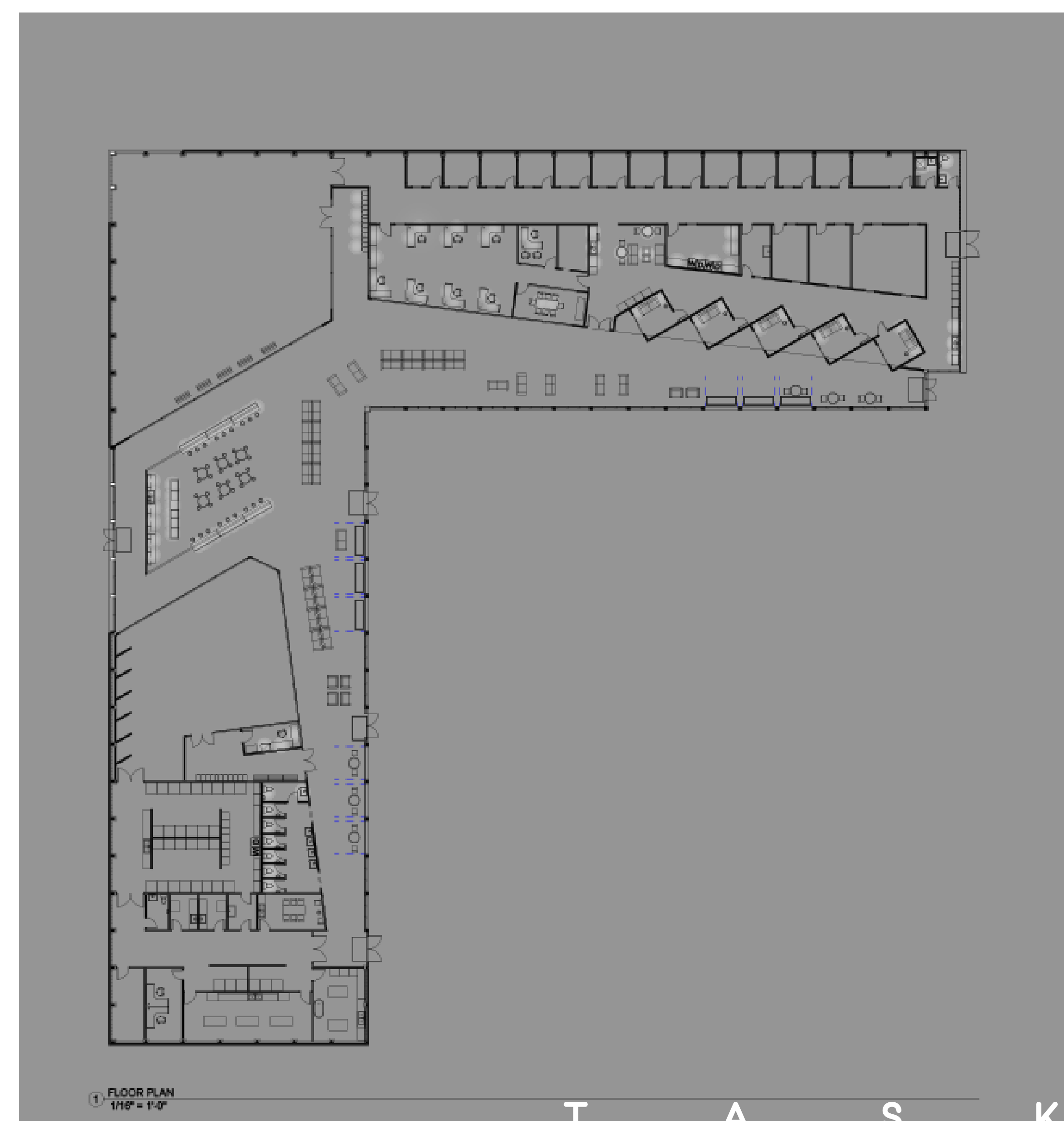
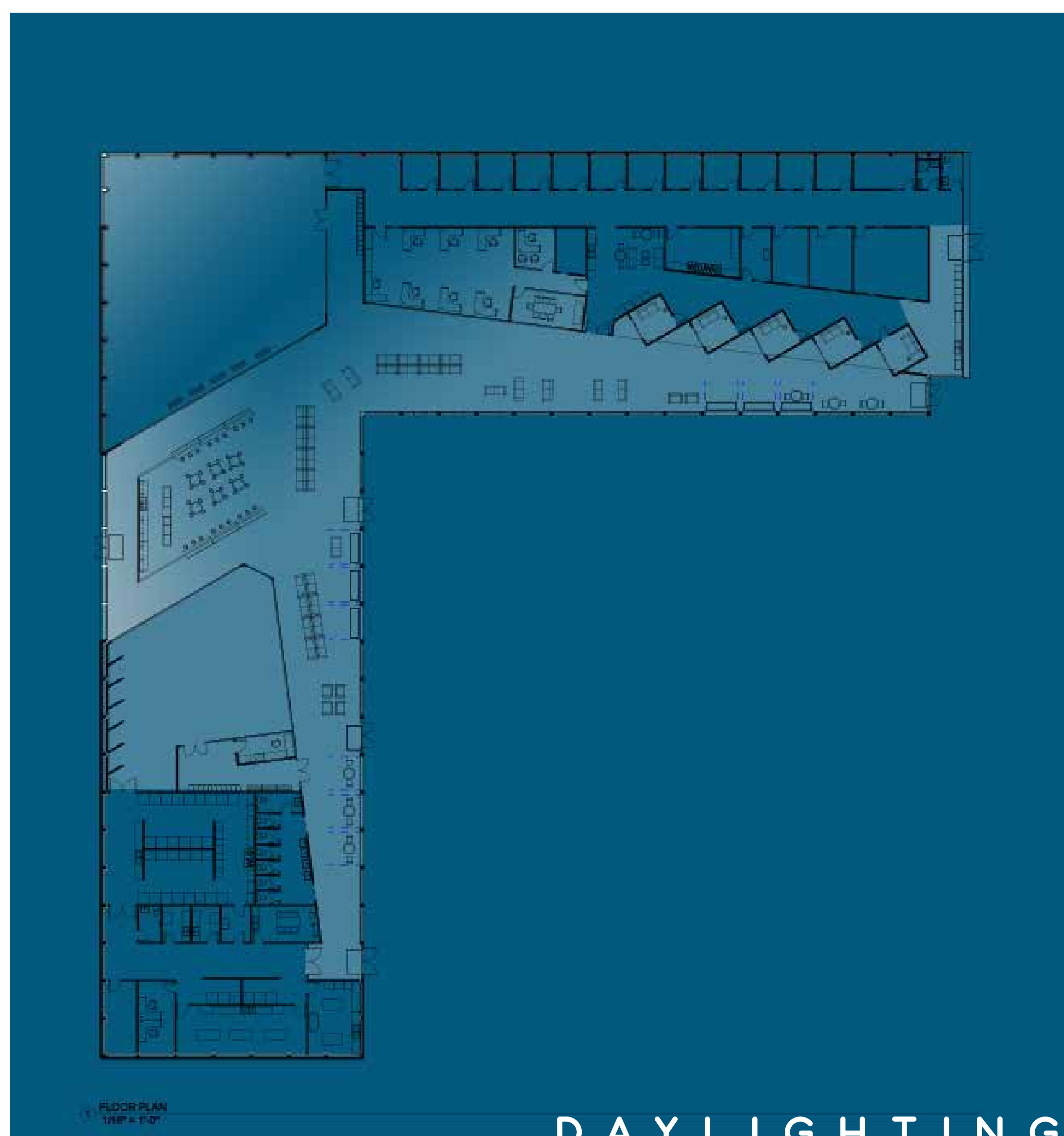
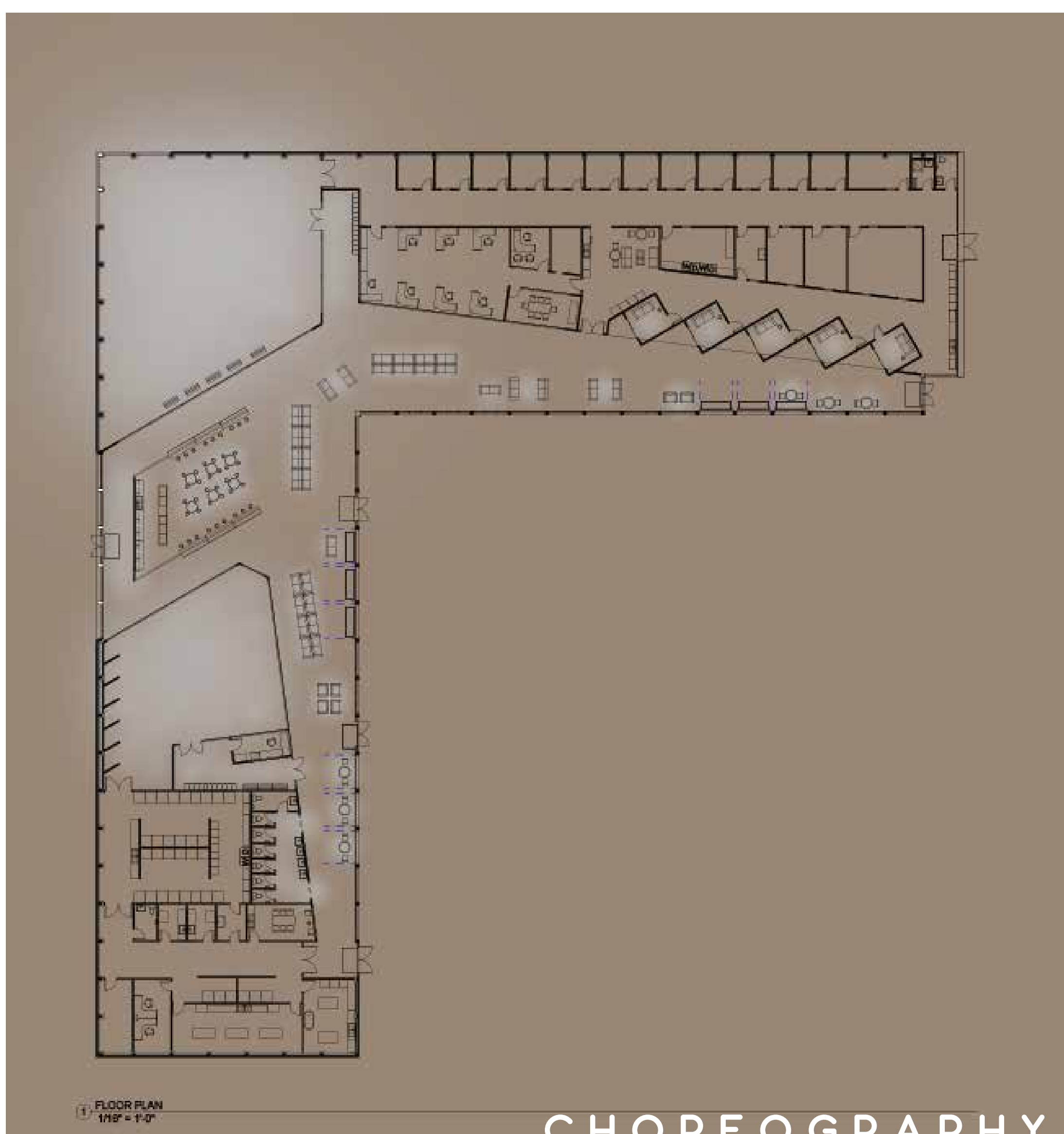
CAT ARCHES



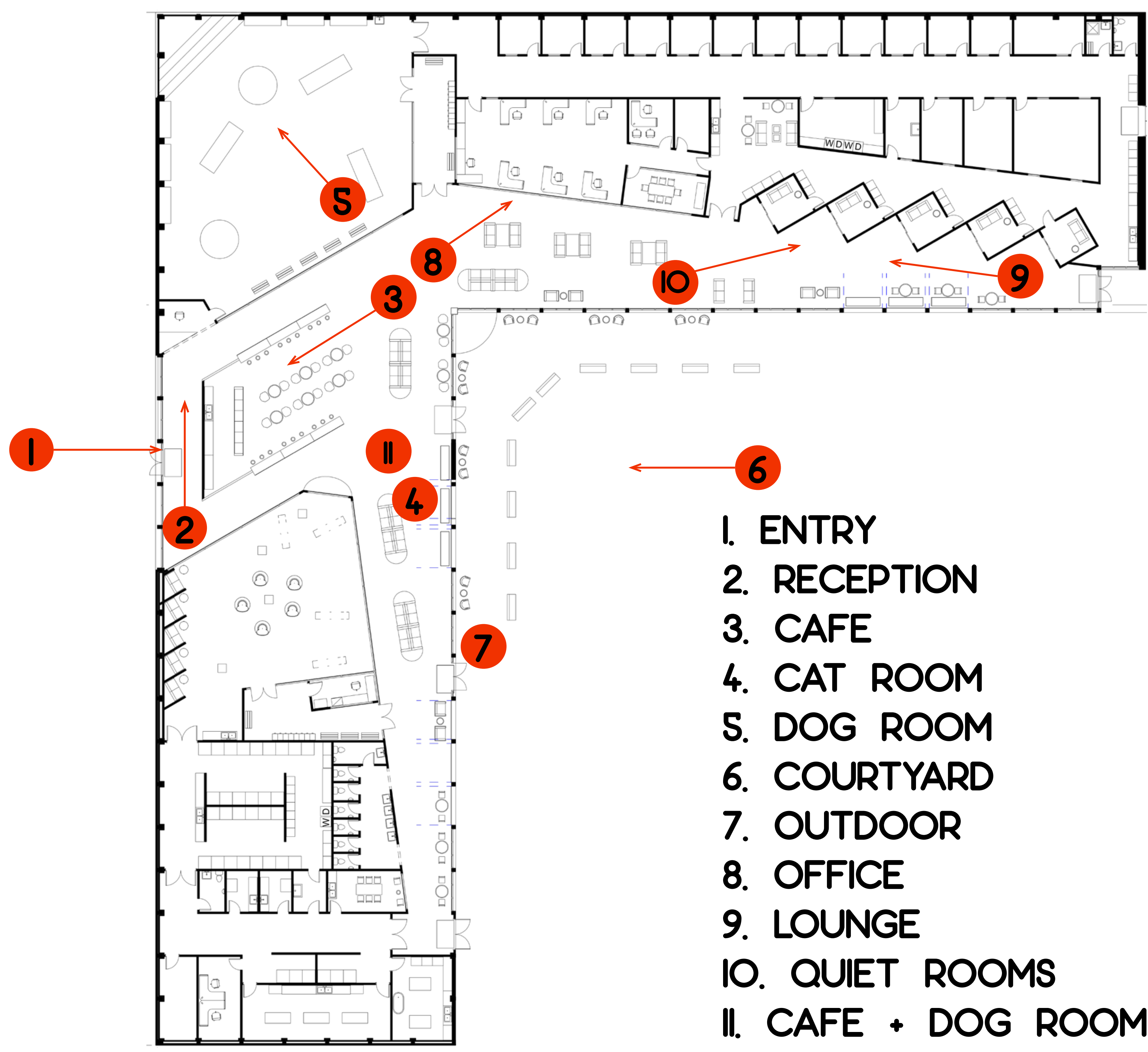
CAT TOWER



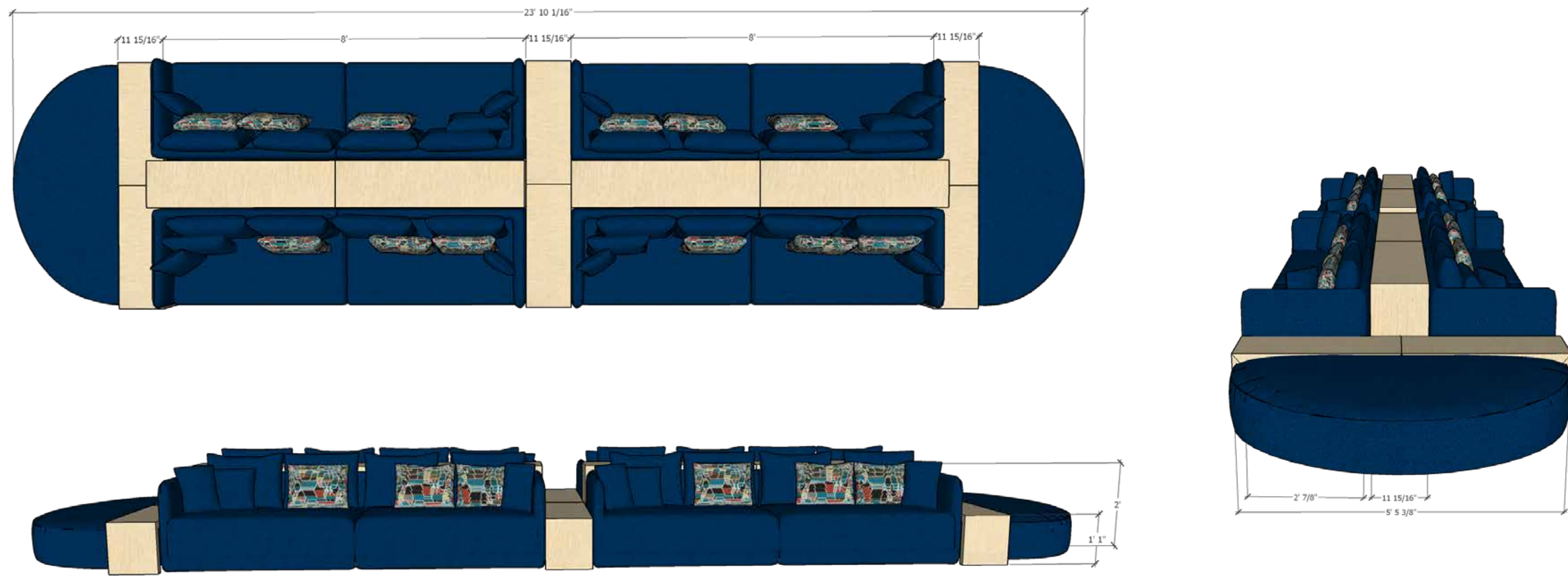
L I G H T I N G D I A G R A M S



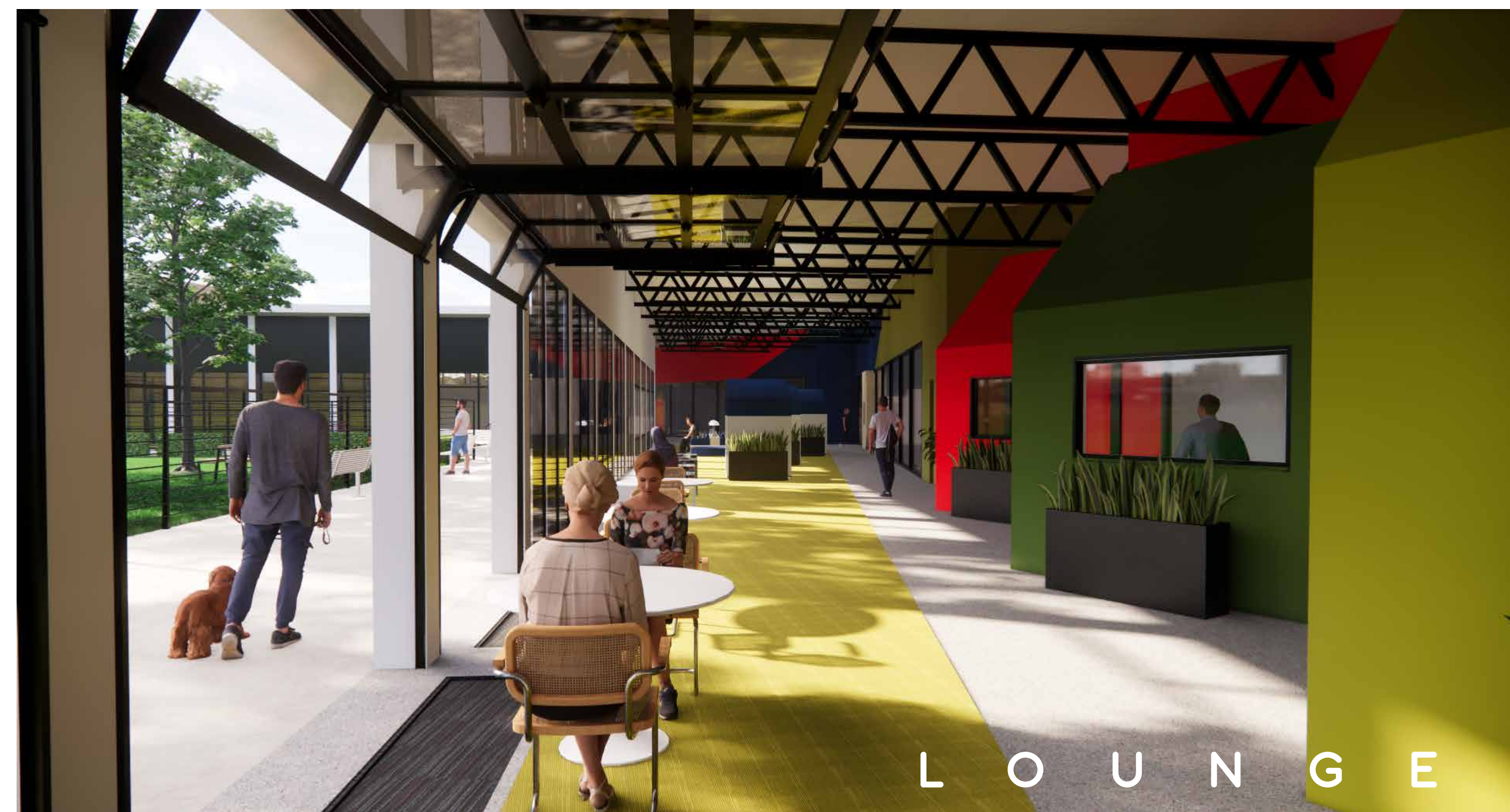
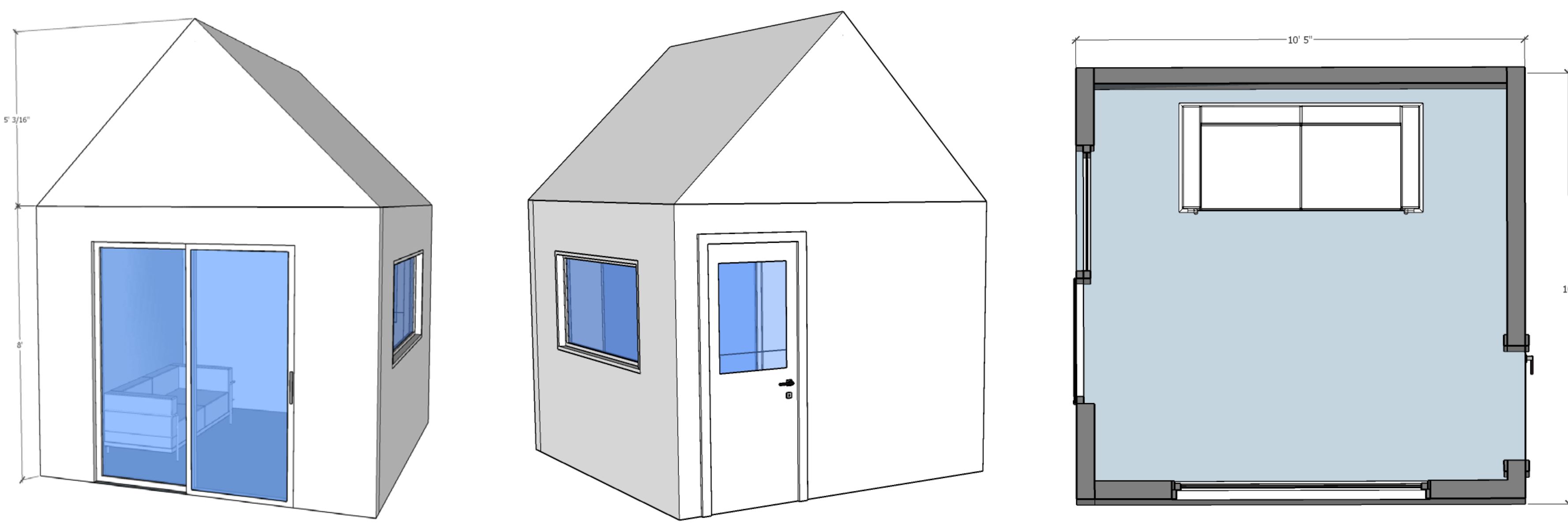
V I E W D I A G R A M



SECTIONAL



QUIET ROOMS



FURNITURE & FIXTURES



MATERIALS PALETTE

