

HEAVEN

+ FUNERAL CEREMONY CENTER

POV

For my capstone project, I want to initiate the design of a contemporary Funeral Ceremony Centre to give the deceased a beautiful farewell celebrating their life. A personal experience has made me think thoroughly and deeply about how this could've made me feel more at ease when I was seeing my love ones for the last time and saying my farewells. I had to rethink the way I say goodbye to our loved ones. Having analysed a number of funeral ceremony centres, it resulted in a design for a new funeral centre consists of always consisting of a sequence of three rooms which connect timeless values of our existence to our modern ways of life.

Funerals can be seen as a memorial of the life of the deceased. Growing up, I did not have to deal with losing a love one therefore, having a clear sequence of moments characterizes these meetings is significant to me and for those who are going through pain of losing a love one. The first moment is the gathering of friends and family, the actual ceremony of remembrance forms the second, then it will follow by a third moment of social encounter. I believe that the lack of places for worthy send offs results in uneasy feelings during crucial moments in our lives. Instead I should be focusing on the intrinsic values of human beings. I want to design Funeral Centre which tries to break this discomfort. The design combines timeless qualities with elements of our modern ways of life. The first being "sharing memories" One of the first area can be the assembly of relatives, friends and known associates is enclosed by a memory wall instead of perhaps a typical quilted slide show that feels quite technical rather than emotional. This will be used for family and friends can share videos and photographs of moments with their loved one.

Haven's intent is to create

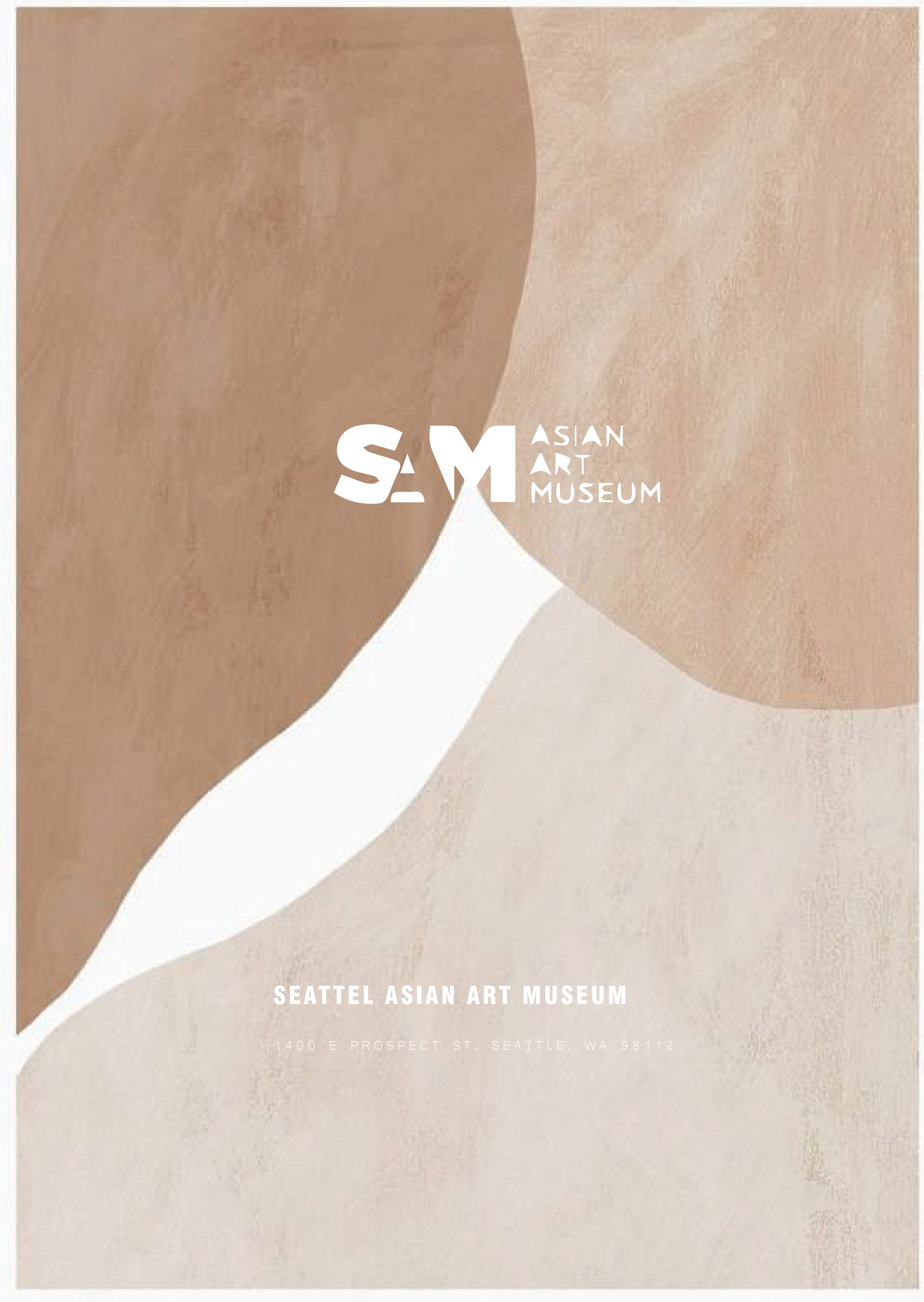
"A PLACE TO HEAL"

RHYTHM+POINT OF CONVERGENCE



SITE

The Seattle Asian Art Museum is a museum of Asian art located inside Volunteer Park in the Capitol Hill neighborhood of Seattle, Washington, United States. Part of the Seattle Art Museum, the SAAM occupies the 1933 Art Deco building (designed by Carl F. Gould of the architectural firm Bebb and Gould and listed on the National Register of Historic Places) which was originally home to the Seattle Art Museum's main collection. In 1991 the main collection moved to a newly constructed Seattle Art Museum building in downtown Seattle. The building in Volunteer Park remained closed until 1994, when it reopened as the Seattle Asian Art Museum. The Seattle Art Museum was founded in 1933 by Richard E. Fuller, a collector of Asian art. The museum announced in 1993 that it would open an Asian art museum at its former location in Volunteer Park. A reception at the museum was held on November 25, 1993 as part of the APEC Summit, attended by the leaders of East Asian nations and 400 guests.(6) The museum opened to the public on August 13, 1994, during a ceremony attended by 6,000 visitors. The Seattle Asian Art Museum is housed in a historic Art Deco building designed in 1933 by Carl F. Gould of the architectural firm Bebb and Gould. From 1933 to 1991, the building served as the home of the Seattle Art Museum and its main collection. After the main collection moved to a new museum in Downtown Seattle, the building was renovated at a cost of \$5.2 million.

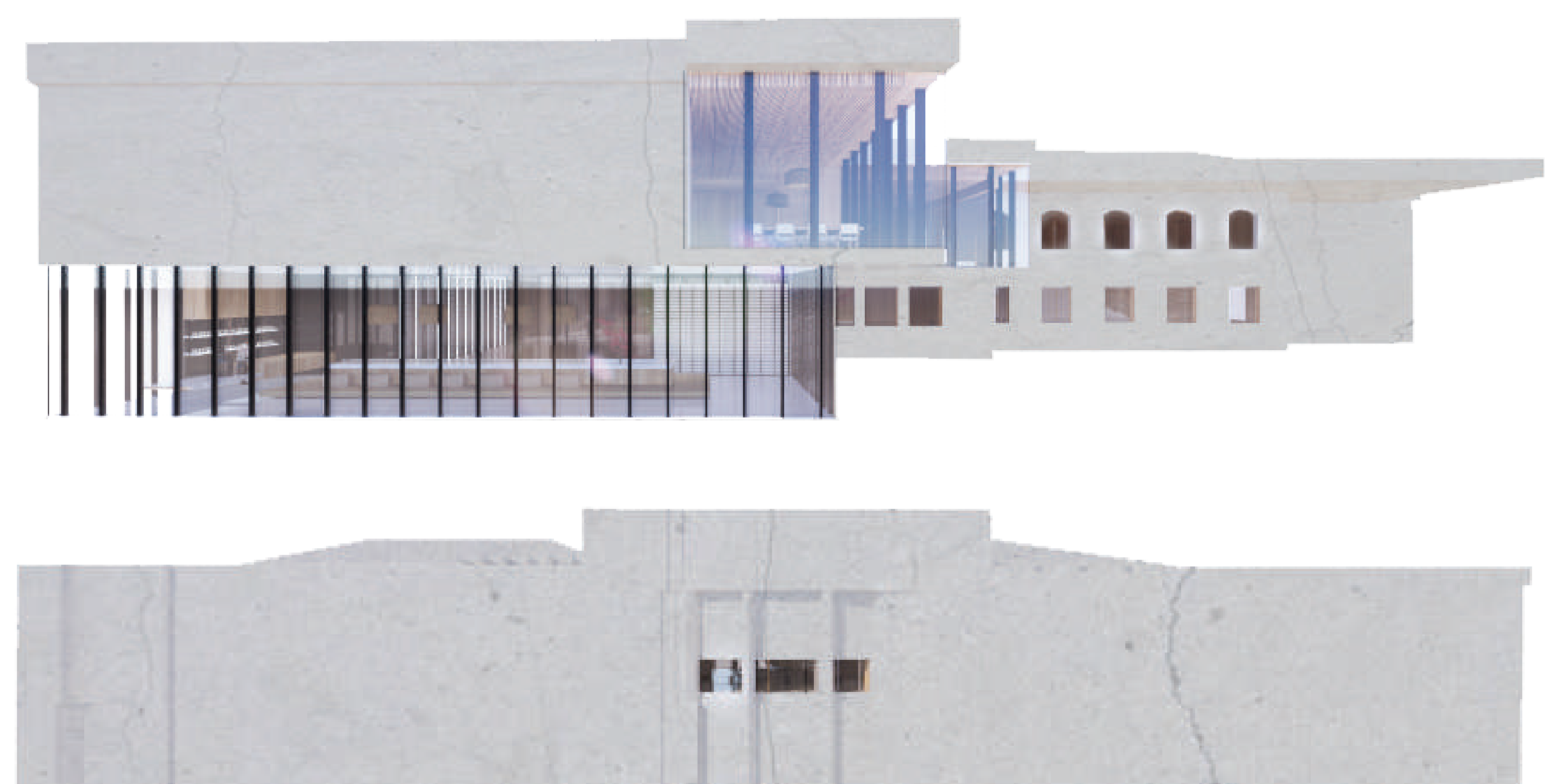


COMPLETE STORY

The journey to the completion of my senior capstone project "The Haven" was one I will always cherish with me dearly. Through the process of designing this space, I was dealing with lost and through this, I able to find my haven. It brought me through many dark nights and pain but it was a pain that those that have been left behind by a loved one must endure. To cope, we must accept and that will be the first step to heal.

Haven is a place I hope those who have experienced a similar feeling of loss will be able to find comfort and heal when they are dealing with losing a loved one. Just like how we have to say goodbye one day when we don't want to, I am saying farewell to this beloved project of mine. Maybe one day a space like this will be built, just maybe...

mythuan nguyen/teom passmore/ capstone II /winter 2020

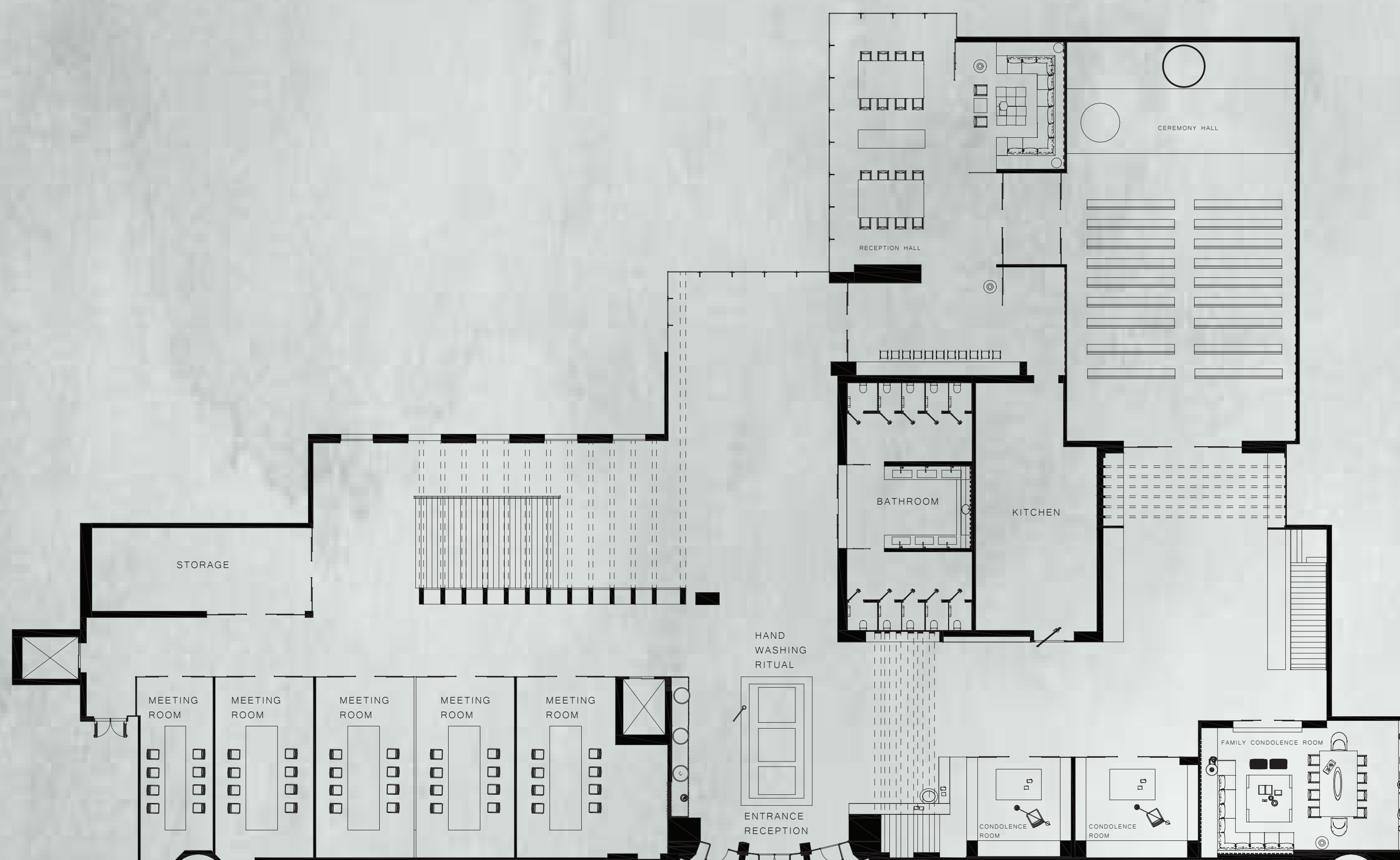


01

- KITCHEN SERVICES/ 1,428
- CEREMONY HALL/ 1,184
- RECEPTION HALL/ 2,560
- ENTRANCE RECEPTION/ 320
- CONDOLENCES ROOM/ 400
- FAMILY ROOM 1/ 720
- FAMILY ROOM 2/ 720
- OFFICES/ 2,378
- BATHROOMS/ 554
- HAND WASH RITUAL/ 400
- STORAGE/ 1,200

LEVEL 01

SCALE: 1/16"=1'-0"

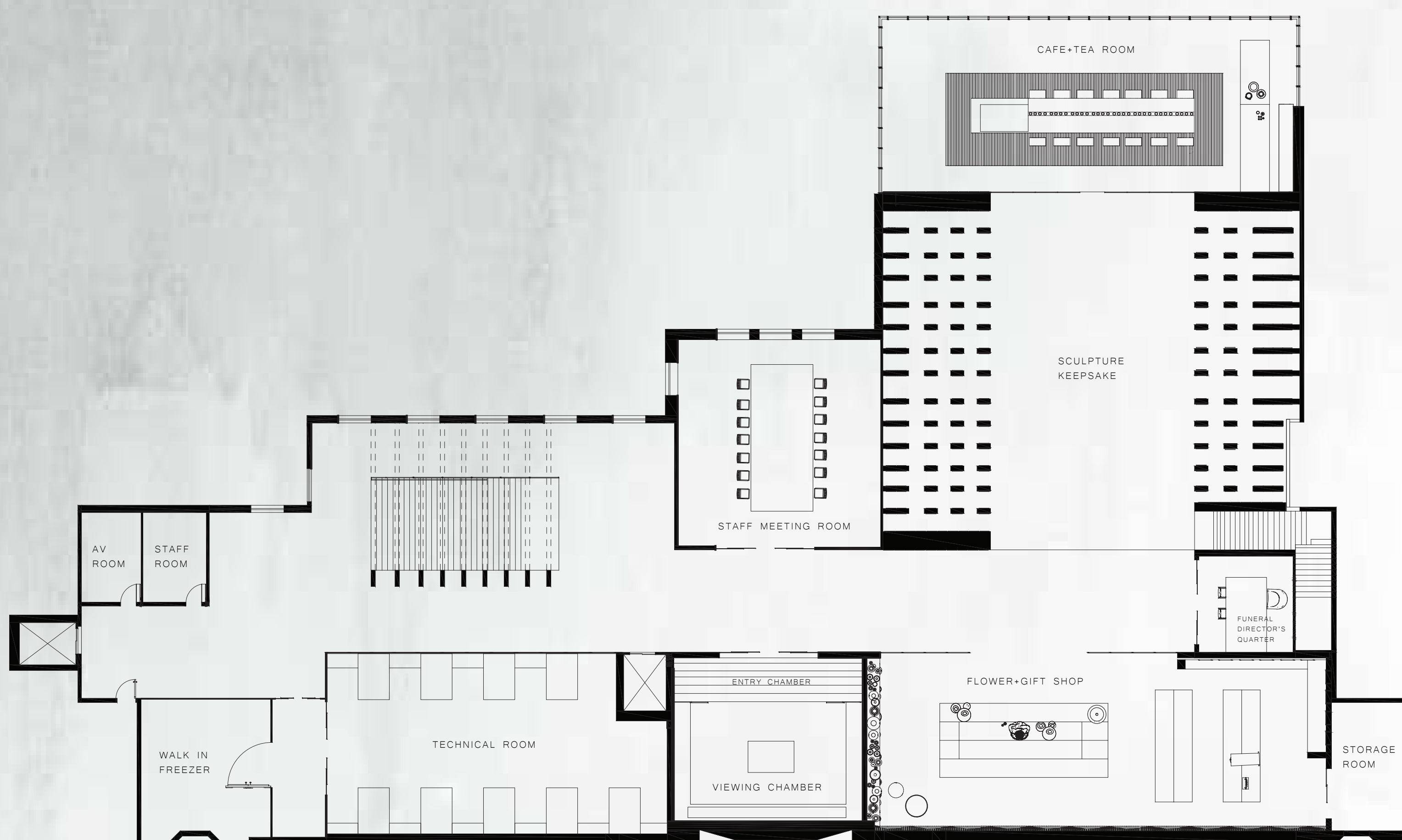


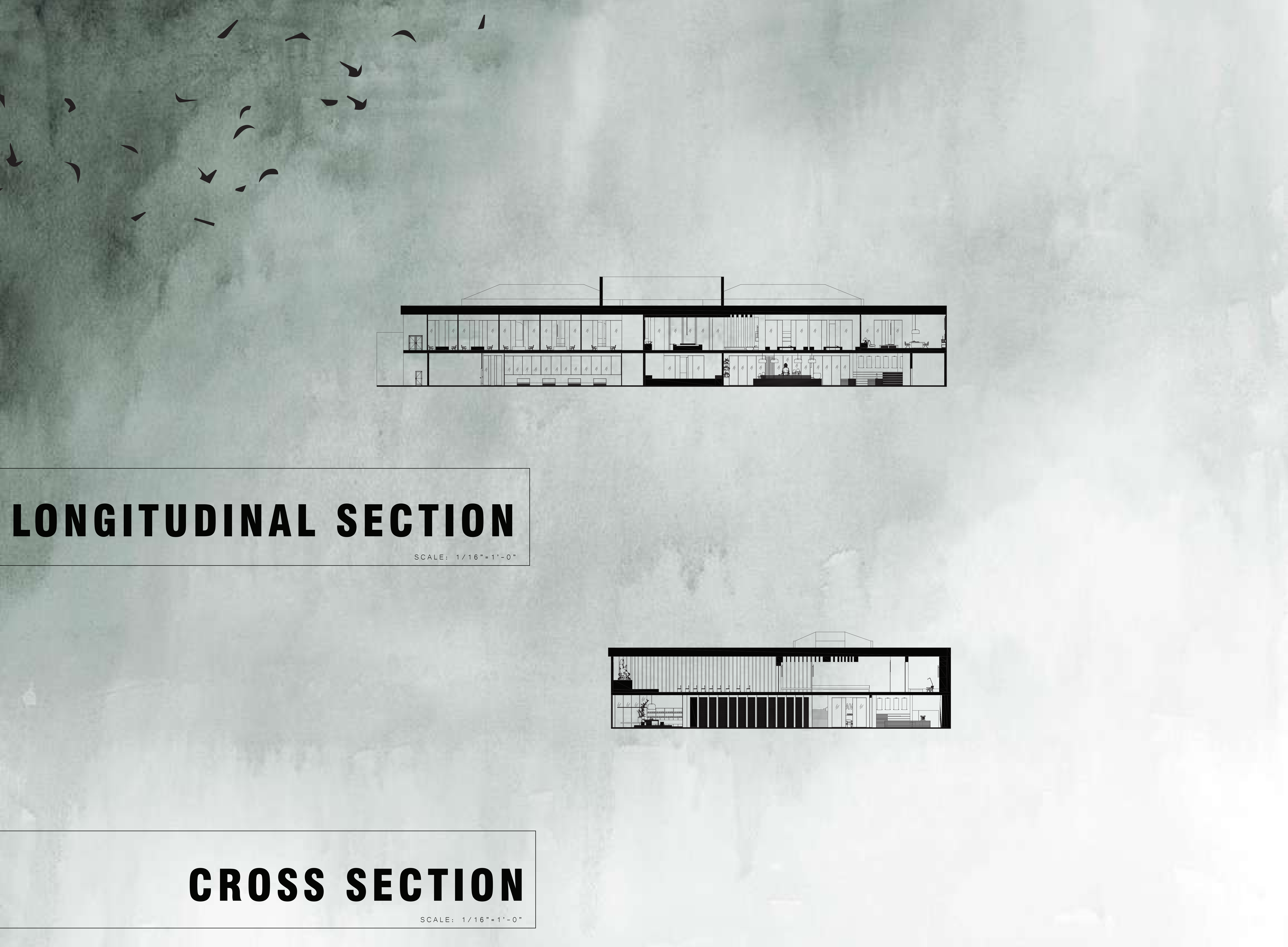
02

- CAFE+TEA ROOM/ 1,612
- ENTRY CHAMBER/ 286
- VIEWING CHAMBER/ 1,184
- FLORAL+GIFT SHOP/ 2,378
- TECHNICAL ROOMS/ 2,378
- AV ROOM/ 136
- STAFF QUARTERS/ 136
- FUNERAL DIRECTOR'S QUARTERS / 252
- SCULPTURAL KEEPSAKE/ 3000
- STAFF MEETING ROOM/ 1,470

LEVEL 02

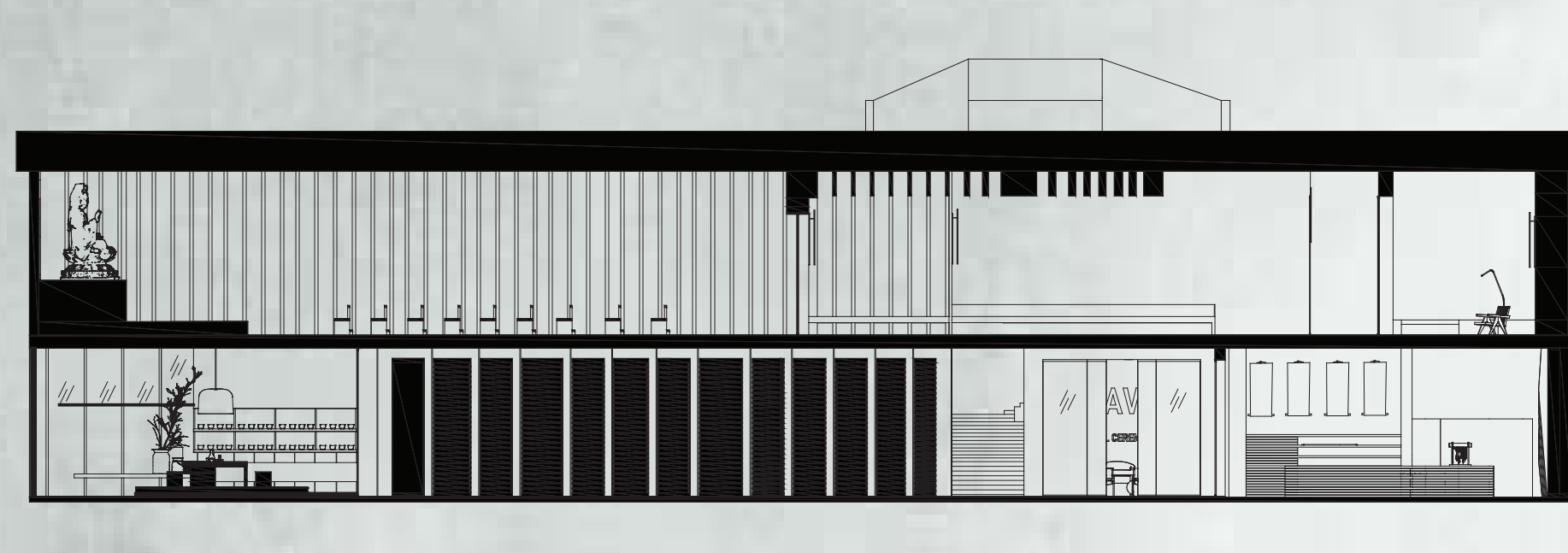
SCALE: 1/16"=1'-0"





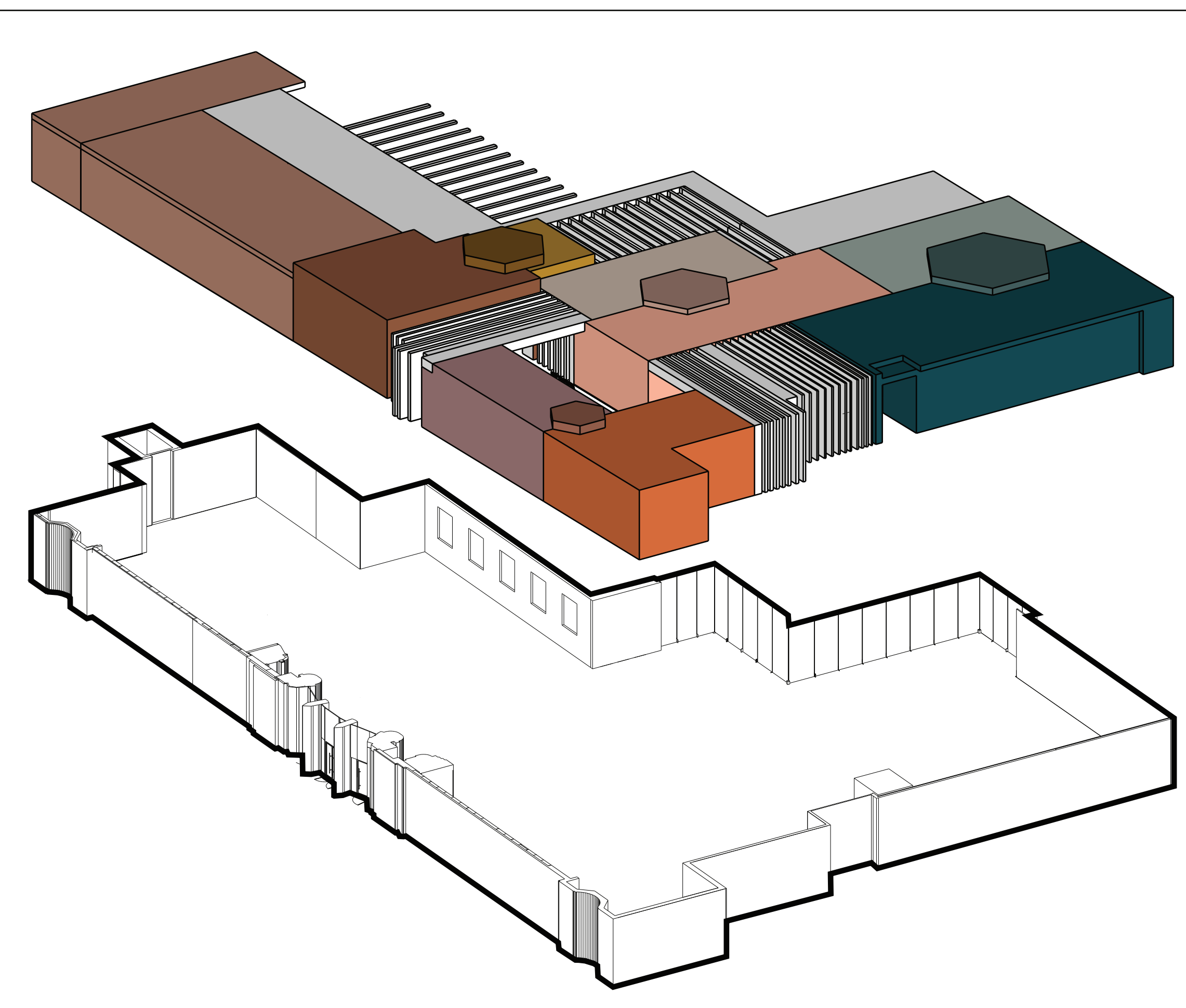
LONGITUDINAL SECTION

SCALE: 1/16"=1'-0"



CROSS SECTION

SCALE: 1/16"=1'-0"

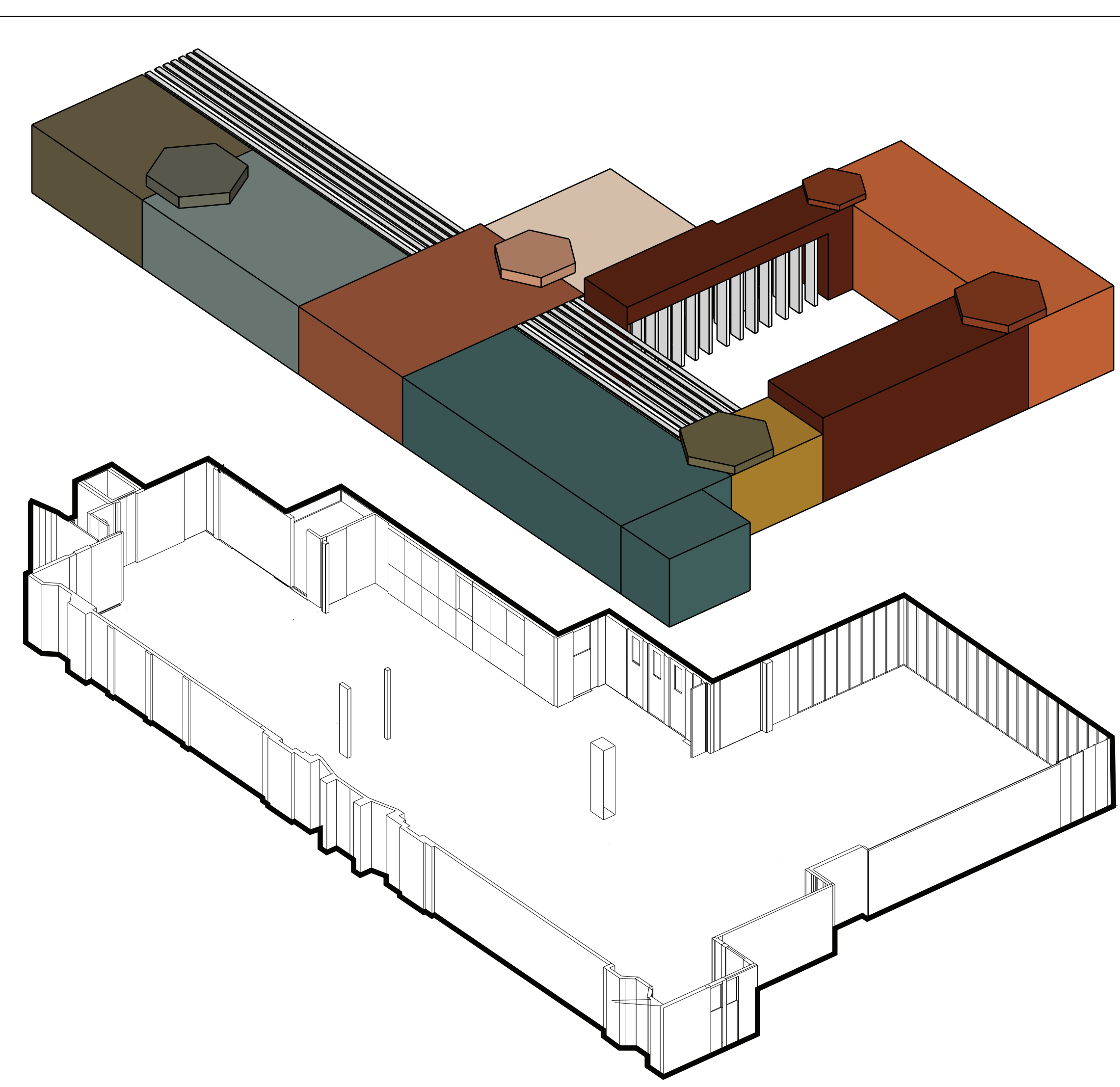


LEVEL 1/POINT OF CONVERGENCE

Point of convergence is when two space meets. In the first level you will see the spaces meeting. Its a meeting between sad and happy spaces and once combine its a place to heal together. The hexagon displays the colors combining to mix a huge that the two spaces reflect.

RECEPTION-RECEPTION ROOM
 CEREMONY-RECEPTION ROOM
 CEREMONY-RECEPTION
 BATHROOM-VICTIM

- ENTRANCE
- HAND WASHING RITUAL AREA
- BATHROOM
- KITCHEN
- CEREMONY ROOM
- RECEPTION ROOM
- CONDOLENCE ROOM
- FAMILY ROOM
- STAFF MEETING WITH MOURNER ROOM

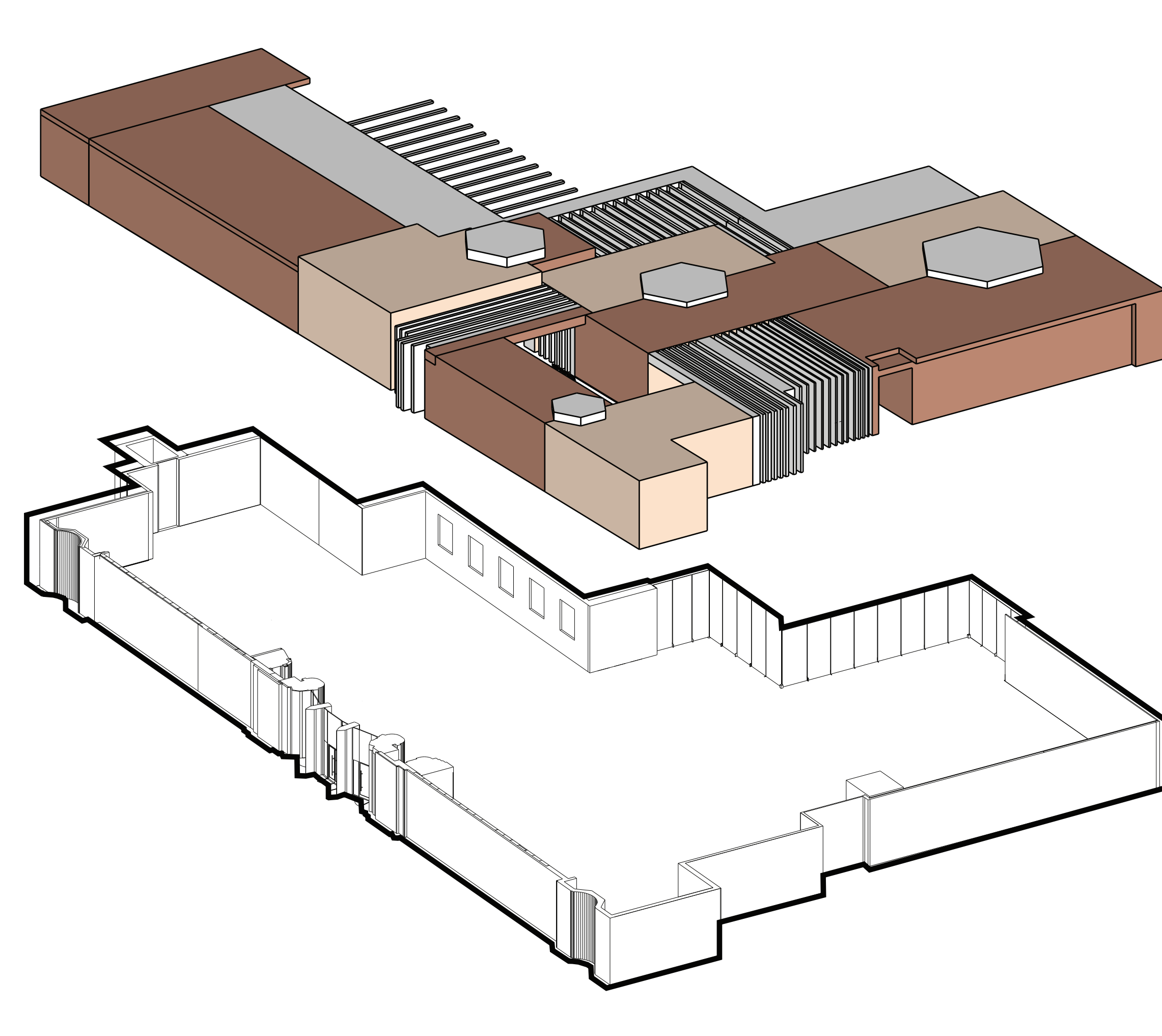


LEVEL 2/POINT OF CONVERGENCE

Point of convergence is when two space meets. In the first level you will see the spaces meeting. Its a meeting between sad and happy spaces and once combine its a place to heal together. The hexagon displays the colors combining to mix a huge that the two spaces reflect.

VIEWING CHAMBER-STAFF MEETING ROOM
 FLORAL-GIFT SHOP-DIRECTORS QUARTER
 SCULPTURE KEEPSAKE-COFFEE-TEA ROOM
 TECHNICAL ROOM-TECH ROOM

- COLD ROOM
- TECHNICAL ROOM
- ENTRY-VIEWING CHAMBER
- STAFF ROOM
- SCULPTURE KEEPSAKE
- CAFE-TEA ROOM
- FLORAL-GIFT SHOP
- DIRECTORS QUARTER

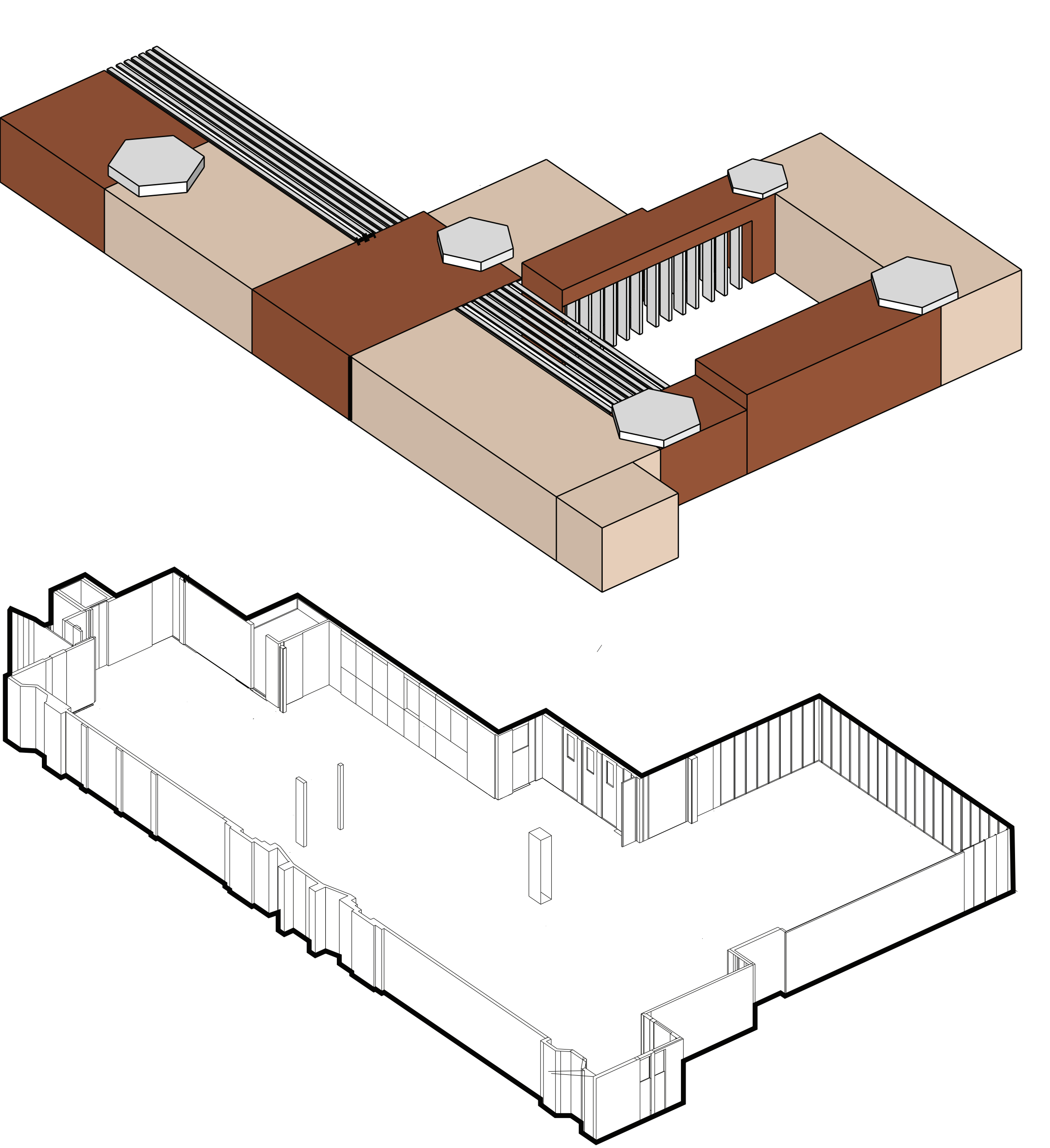


LEVEL 1/RHYTHM

RHYTHM is a repetitive pattern, and in this case, it's RHYTHM OF EMOTION such as GRIEF, LAUGHTERS, CONDOLENCE. The spaces alternate between the feeling of sad and happy.

ENTRANCE-SAD
 HAND WASHING RITUAL AREA-SAD
 CONDOLENCE ROOM-SAD
 FAMILY ROOM-HAPPY
 CEREMONY ROOM-SAD
 RECEPTION ROOM-SAD
 BATHROOM-SAD
 VICTIM-SAD
 STAFF MEETING WITH MOURNERS-SAD

- SAD
- HAPPY



LEVEL 2/RHYTHM

RHYTHM is a repetitive pattern, and in this case, it's RHYTHM OF EMOTION such as GRIEF, LAUGHTERS, CONDOLENCE. The spaces alternate between the feeling of sad and happy.

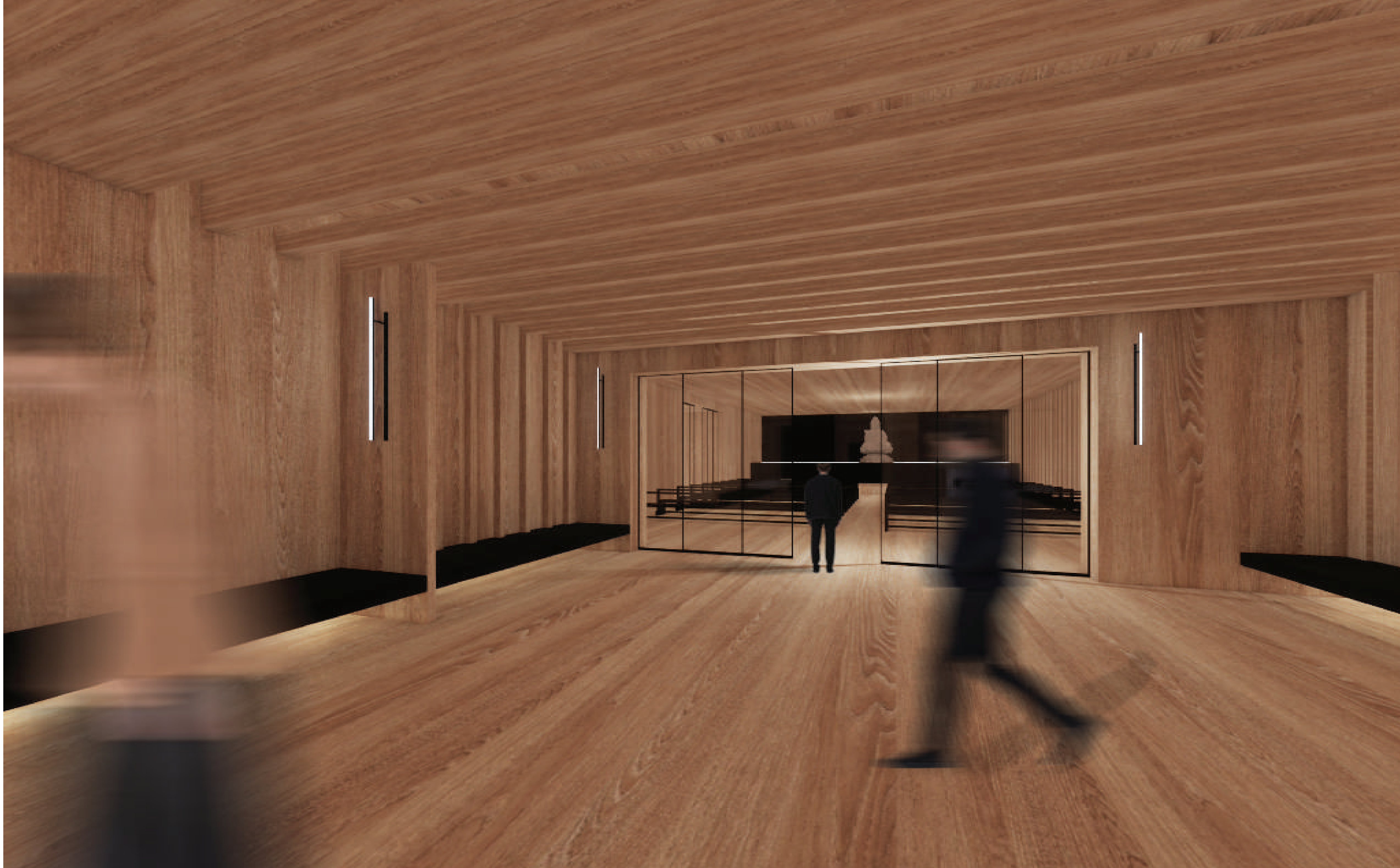
COLD ROOM-SAD
 TECHNICAL ROOM-SAD
 ENTRY-VIEWING CHAMBER-SAD
 STAFF ROOM-SAD
 SCULPTURE KEEPSAKE-SAD
 CAFE-TEA ROOM-SAD
 FLORAL-GIFT SHOP-SAD
 DIRECTORS QUARTER-SAD

- SAD
- HAPPY



THE HAVEN/
 FUNERAL CEREMONY
 CENTER

MATERIALS PALETTE



01

THE HAVEN/
FUNERAL CEREMONY
CENTER

CEREMONY HALLWAY



02

THE HAVEN/
FUNERAL CEREMONY
CENTER

ENTRANCE +
HAND WASHING
RITUAL



03

THE HAVEN/
FUNERAL CEREMONY
CENTER

CONDOLENCE ROOM



04

THE HAVEN/
FUNERAL CEREMONY
CENTER

FAMILY CONDOLENCE
ROOM



05

THE HAVEN/
FUNERAL CEREMONY
CENTER

CEREMONY HALL



06

THE HAVEN/
FUNERAL CEREMONY
CENTER

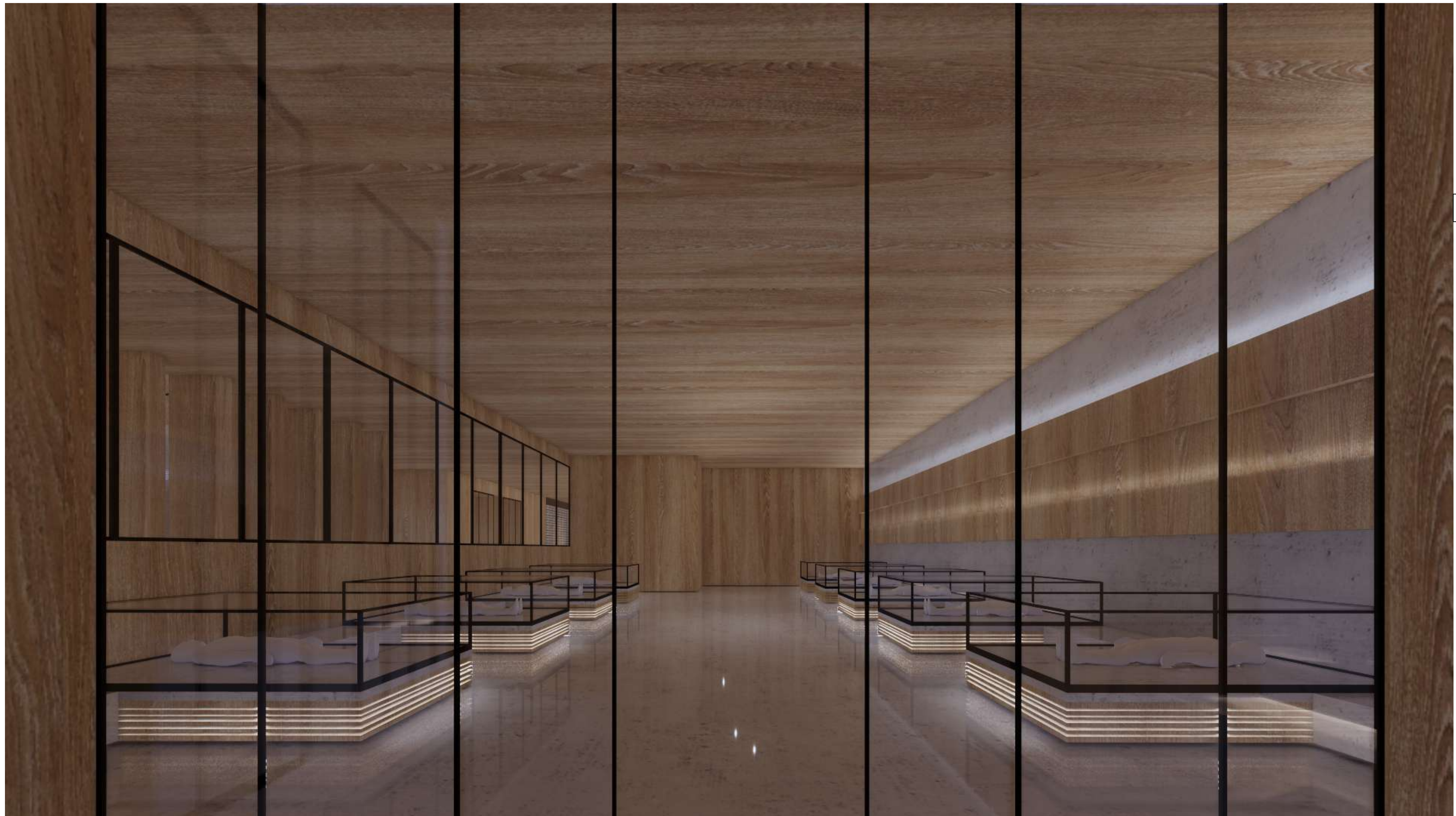
RECEPTION HALL



07

THE HAVEN/
FUNERAL CEREMONY
CENTER

BATHROOM



08

THE HAVEN/
FUNERAL CEREMONY
CENTER

TECHNICAL ROOM



09

THE HAVEN/
FUNERAL CEREMONY
CENTER

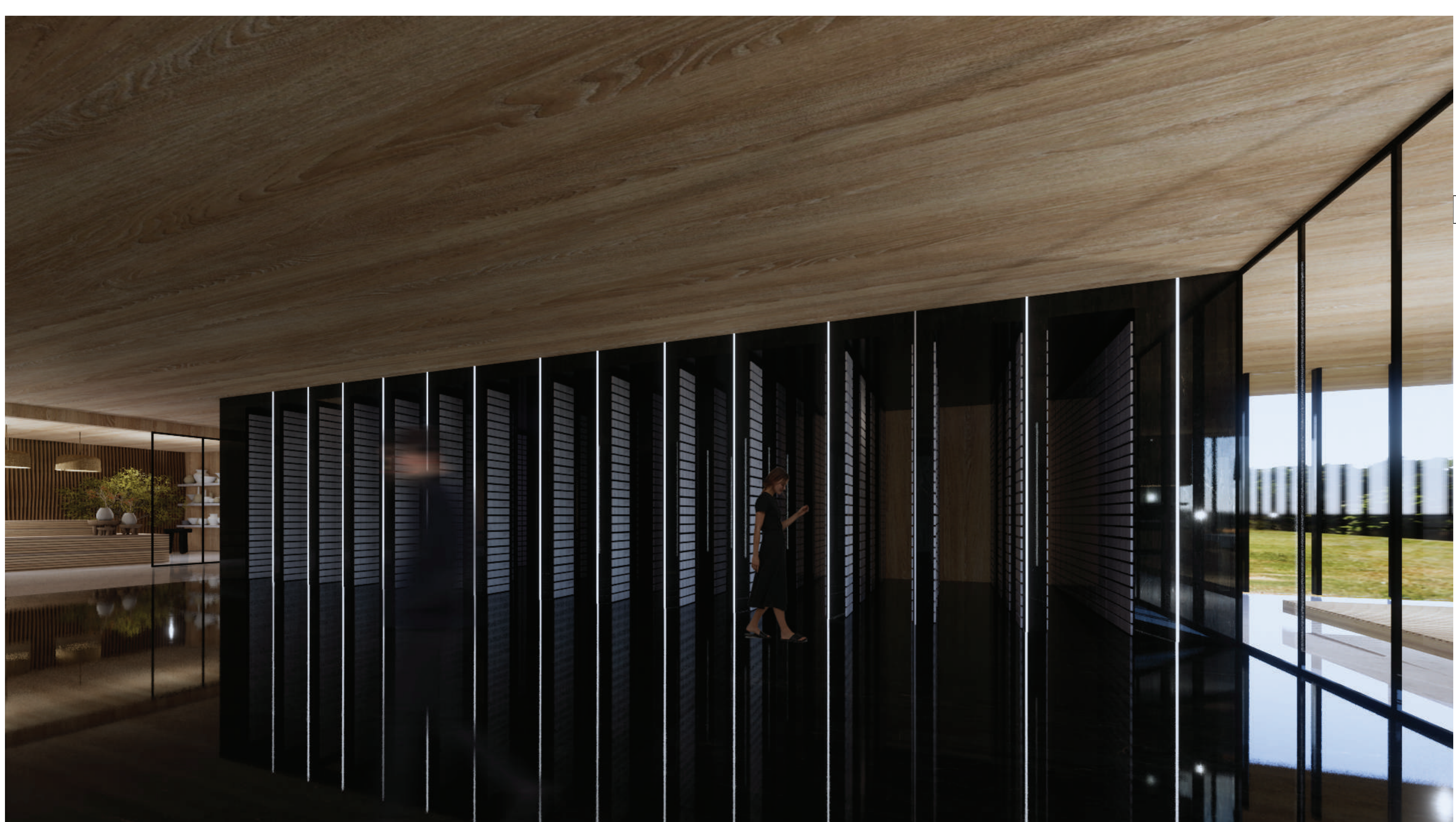
ENTRY-VIEWING
CHAMBER



10

THE HAVEN/
FUNERAL CEREMONY
CENTER

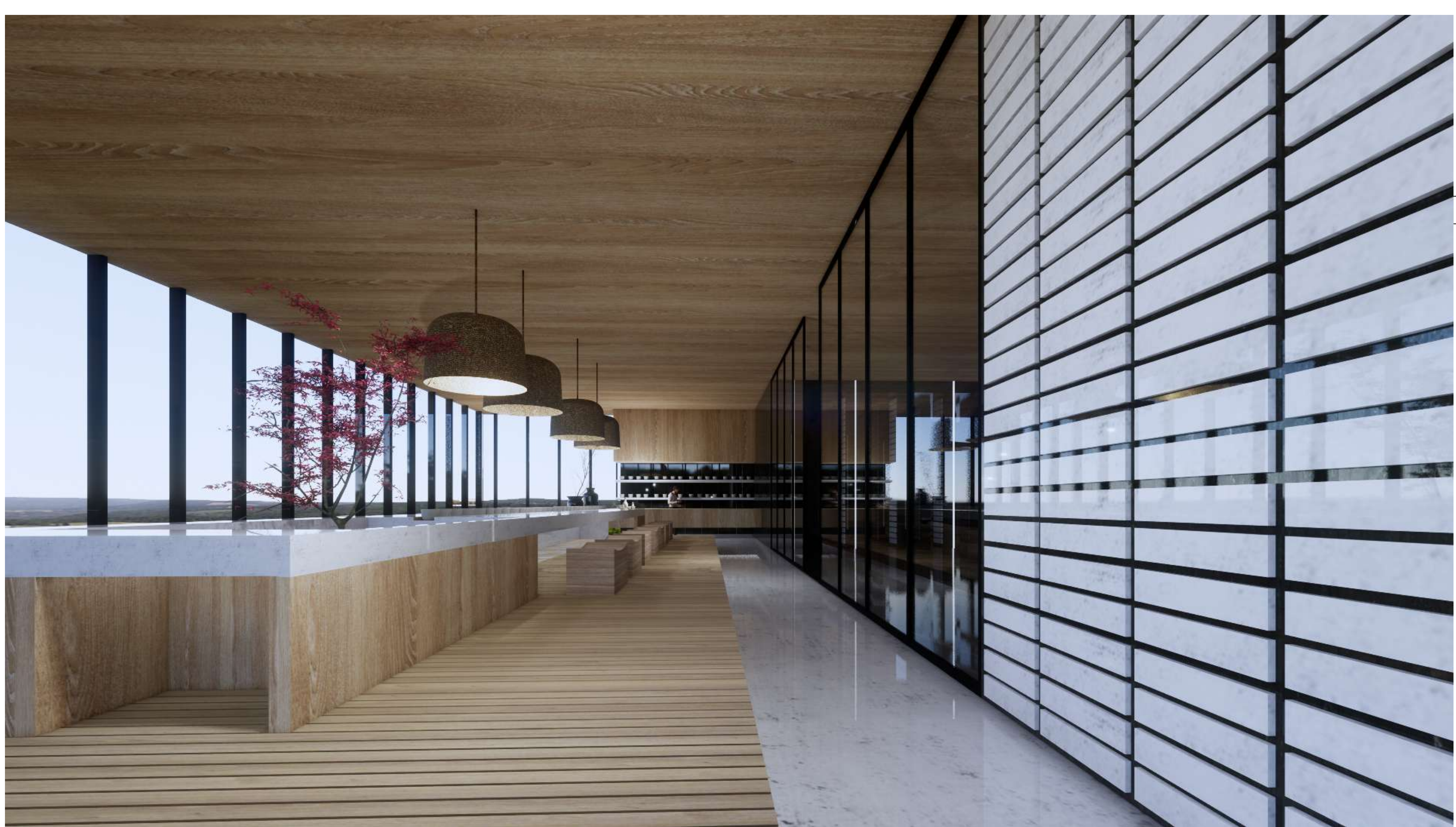
FLORAL+GIFT SHOP



11

THE HAVEN/
FUNERAL CEREMONY
CENTER

SCULPTURE KEEPSAKE



12

THE HAVEN/
FUNERAL CEREMONY
CENTER

CAFE+TEA ROOM

FLORAL+ GIFT SHOP DESK

RAW OAK



CASKET

BLACK METAL

GLASS

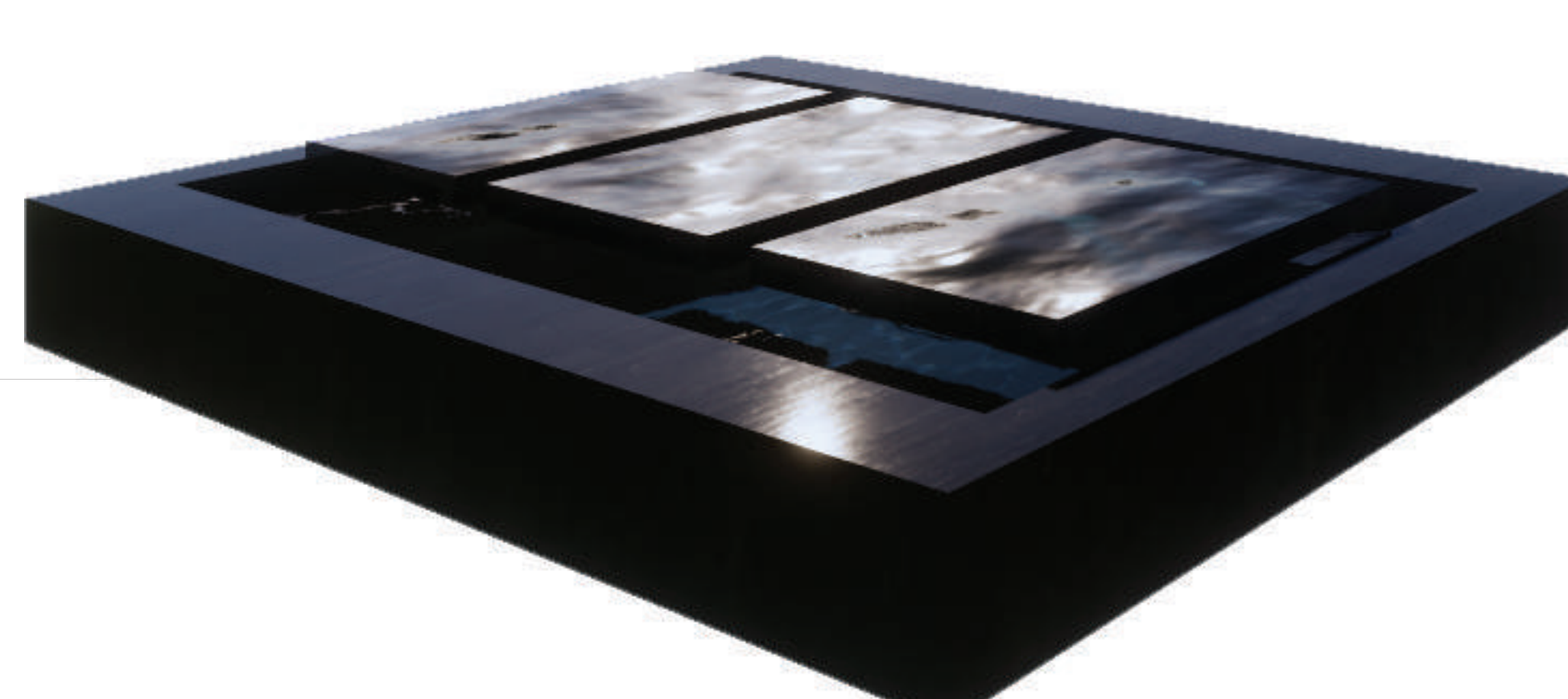
CARRERA MARBLE

RAW OAK



HAND WASHING RITUAL

CARRERA MARBLE



ENTRANCE BENCH

RAW OAK

BLACK MARBLE



WALL SCENE

BLACK METAL



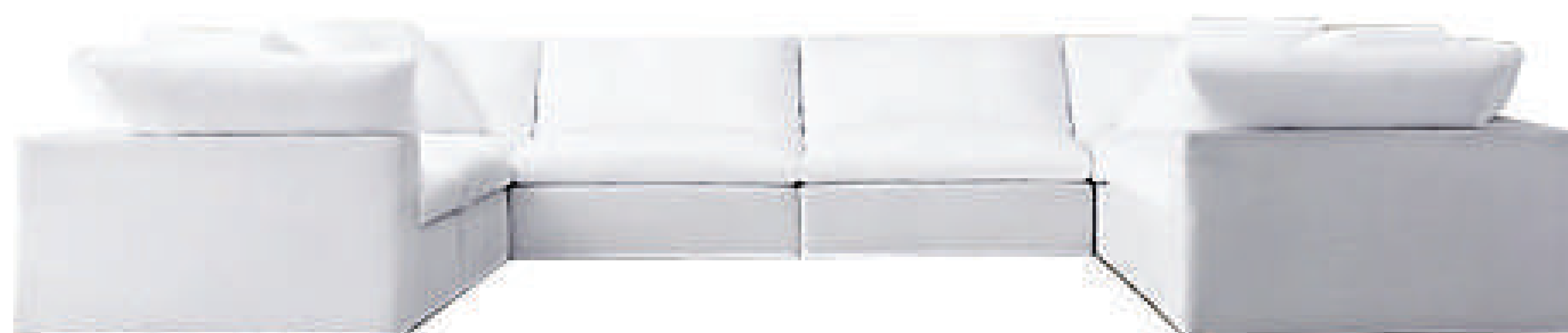
THE HAVEN/
FUNERAL CEREMONY
CENTER

Jeanneret by France & Son



THE HAVEN/
FUNERAL CEREMONY
CENTER

Cloud Modular U-Sofa Sectional



THE HAVEN/
FUNERAL CEREMONY
CENTER

Terra-Cotta Vessel Table Lamp - Etruscan Urn



THE HAVEN/
FUNERAL CEREMONY
CENTER

Reclaimed Russian Oak Parsons Rectangular Extension Dining Table

