

# INTRODUCTION TO SOCIOLOGY

## SOC& 101-C, Fall 2012

### 9:30-10:20 Daily, C-164

**Instructor: Dr. Lori Saffin**

**Email: [lsaffin@bellevuecollege.edu](mailto:lsaffin@bellevuecollege.edu)**

**Office Phone: (425) 564-2161**

**Office Location: A100-E**

**Office Hours: M,W,& F 8:30–9:20; T&TH 1:30-2:20 and by appointment**



## Course Introduction:

Welcome to Introduction to Sociology! This course is a broad introduction to the field of Sociology where we will begin to make connections between the most private elements of our lives and the cultures, groups, organizations, and social institutions to which we belong. Throughout this class, we will become acquainted with basic sociological concepts/perspectives and examine the importance of identities across racial/ethnic, class, gendered, and sexual differences. Through lecture, discussion, film, readings, and other media, we will explore the many complexities of our social world. The aim of this course is for us to begin analyzing everyday occurrences and the things that we often take for granted to better understand the relationship between individuals and society. We will question the way things work, challenge why things work the way they do, and critically think about who we are within (and how do we connect with others within) the world around us. Ultimately, this course will compel us to see the ways in which the structure of society is greater than the sum of the experiences and psychologies of the individuals within it. Welcome, strap yourself in, and enjoy the ride!

## Required Texts:

1. David Newman. "Sociology: Exploring the Architecture of Everyday Life." 9<sup>th</sup> edition. Pine Forge Press: 2012.
2. Additional articles or handouts are posted on the course website ([My BC](#) – under "shared documents")

## Learning Atmosphere:

I believe that students learn best when they are actively involved in the teaching and learning process. Thus, this is an active and interactive course where you will often learn by doing. You are expected to observe the world, read, write, discuss, and participate. I think of our class as a collaborative learning community where we all teach and learn from each other. Every time you make a comment or ask a question, you teach something to the rest of us. I challenge you to abandon the traditional passive student role and to get involved with teaching and learning – I think you'll enjoy it and learn a lot in the process.



*A note about course content:* Since sociologists examine just about every aspect of the social world, we will sometimes talk about provocative material in class. Please be advised that when we explore controversial topics, they will be framed in an academic context. Topics run the gamut in sociology and at times there may be material that makes people uncomfortable. Keep in mind that when we find ourselves in a space outside of our comfort zone, it's an opportunity for learning. You may be confronted with subject matter that is difficult to watch, see, discuss, or listen to. You are free to leave the room at any time, but please know you will be responsible for any course material you may have missed while you were gone. Also, profanity exists in our social world and thus will be used throughout this course - so please be advised. If you have any questions or concerns about course content or climate, don't hesitate to let me know.

## Learning and Course Outcomes:

After participating, discussing, and completing this course, a successful student will demonstrate:

1. A general understanding of basic concepts most widely used in sociology today.
2. A critical idea of society and community, including where in your social landscape you live, and how you observe those around you.
3. A general knowledge and comprehension of how social, political, and cultural forms of power are played out, and how some folks perceive those experiences.
4. A general understanding of the representation and identity construction of various groups in historical and contemporary analyses of culture in the US.
5. Identify the ways in which culture and social institutions (such as education, economy, media, family) shape our everyday experiences
6. Explain social constructionism and how life experiences and opportunities differ according to race, class, gender, and sexuality
7. Become culturally relative and think outside of personal ethnocentrism or other biases.

## General Education Outcomes:

This course's General Education ratings are: 3 in Critical Thinking, 2 in Reading, 2 in Ethics, 2 in Historical and Intellectual Perspectives, and 3 in Cultural Diversity.

## General Course Rules and Expectations:

- **Attendance:** Attend all class meetings and come to class on time. Your presence in class contributes significantly toward your final grade in the course as I cover a lot of material in class that cannot be found in the readings. More than three unexcused absences or late attendances will lower your grade, and continue to do so as you miss more classes. To have an absence or tardy considered excused, you must discuss it with me prior to the absence or tardy, unless it is an emergency. Excused absences include doctor's visits, family emergencies, and sometimes work-related issues. If you miss class, please connect with your colleagues to find out what you missed. I highly recommend that you get the names and contact information of one or two of your classmates so you can contact them for any assignments or notes you may have missed while absent.
- **Preparation:** You should come to class having done all the assigned reading and homework and you should always bring the proper supplies with you daily, including your textbook. Note that the BC guideline for homework is two hours outside of class for each hour spent in class.
- **Assignments:** All assignments are due at the start of the class period. Assignments, papers, homework, or exams must be typed, printed out, stapled, and handed in at the beginning of class. Emailed assignments are not accepted. If you know you are going to be absent on the day an assignment is due, then turn it in early. All major due dates are indicated on the attached Course Calendar. Please see the writing guidelines for the format of submitting all written assignments.
- **Late Work:** I believe that one of the major lessons students take away from college is the importance of meeting deadlines. As a result, **no late work will be accepted** unless you have had it approved by me BEFORE the due date. Late work will receive a zero grade.
- **Contribution:** Learning about each other's experiences and perspectives is an integral part of the learning process in this course. I believe that you will learn a lot about yourself and your fellow classmates. Therefore, you are expected to be an active participant in our learning environment. An active participant can include contributing to discussions, but can also mean getting to class on time, taking notes, listening to your peers, and coming to class prepared. You should do your best to contribute to class discussions and activities.
- **Classroom Etiquette:** All electronic devices are prohibited in the classroom at all times. This includes cell phones, i-phones, laptops, kindle/nooks, i-pods/mp3 players, etc. If you need a laptop to take notes, I will need verification. All texting devices should be placed in your bag for the duration of the class. Please note that that texting, excessive talking, or other disruptive behavior is not only disrespectful to me, it is also

disrespectful to the people around you. Your participation grade will be affected and lowered by these types of behaviors.

- **Respect:** I expect that your behavior in class be respectful. Learning about diverse experiences is central to this course, so it is of the utmost importance that you respect your classmates' experiences, differences, and opinions. In order for us to learn from each other, we have to allow each other to make mistakes and to offer unpopular positions for debate. This is a college classroom and as such, I expect students to behave as adults. I do not tolerate excessive talking or whispering, consistent late arrivals, or early departures. *Students who are disrespectful to their classmates or the instructor will be asked to leave class and will be marked absent until arrangements are made with the instructor to return to class and will result in your participation credit lowering.*
- **Plagiarism:** Cheating, stealing and plagiarizing (using the ideas or words of another as one's own without crediting the source) are violations of the Student Code of Conduct at Bellevue College. This is a serious offense which can result in possible probation or suspension from Bellevue College and go on your permanent academic record. Do not do it! If you cheat/plagiarize, you fail. No excuses will be taken into account. Your work must be your own, except when you are asked to work with other students. Furthermore, you are required to acknowledge in your papers if you have borrowed any ideas, terms or phrases. Do not copy and paste material from Wikipedia or any other website into your assignments, as with is a severe form of cheating (that is very easy to catch, by the way). In this class your assignments should be grounded in the textbook rather than web resources, which are often wrong. If you have any hesitation or if you are in doubt about one of these issues, feel free to ask me.

## Bellevue College's Rules and Regulations:

- **Incomplete:** If a student fails to complete all the required work for a course, an instructor may assign the grade of Incomplete ("I"). The student must complete the coursework by the end of the next quarter, or receive the assigned letter grade (usually an "F").
- **F Grade:** Students who fail a course will receive a letter grade of "F."
- **Final Examination Schedule:** The Social Science Division will adhere to the final examination schedule as stated in the BC Schedule. Final examinations will be held at the end of each quarter at fixed times. Instructors will not give examinations in advance of the regular schedule. A student who is absent from any examination held at any time during the quarter may forfeit the right to make up the examination. If, for illness or some other circumstance beyond the student's control, the student is unable to be present at any scheduled examination and has contacted the instructor on a timely basis, the student may be permitted to take such examination at a time designated by the instructor.
- **Withdrawal from Class:** College policy states that students must formally withdraw from a class by the end of the seventh week of the quarter (Registration Office, B125). If a student has not withdrawn by that date, an appropriate letter grade will be assigned for the course.
- **Hardship Withdrawal:** Instructors may assign the grade of "HW" (hardship withdrawal) at their discretion in the event that a student cannot complete the coursework due to extreme and exceptional circumstances. Students may also contact the Enrollment Services office BEFORE grades are assigned in cases of hardship.
- **Cheating, Stealing and Plagiarizing:** Cheating, stealing and plagiarizing (using the ideas or words of another as one's own without crediting the source) and inappropriate/disruptive classroom behavior are violations of the Student Code of Conduct at Bellevue College. Examples of unacceptable behavior include, but are not limited to: talking out of turn, arriving late or leaving early without a valid reason, allowing cell phones/pagers to ring, and inappropriate behavior toward the instructor or classmates. The instructor can refer any violation of the Student Code of Conduct to the Dean of Student Services for possible probation or suspension from Bellevue College. Specific student rights, responsibilities and appeal procedures are listed in the Student Code of Conduct, available in the office of the Dean of Student Services. If you are accused of cheating, stealing exams and/or plagiarism, there is a Bellevue College Student Discipline and Appeals Procedure (the right to due process) which you may pursue. Contact the office of Division Chair (D110), the Dean of Student Services (B231A) or the Associated Student Body (C212) for information regarding the appeals process.

## Students with Disabilities:

All students are responsible for all requirements of the class, but the way they meet these requirements may vary. If you need specific academic accommodations due to a disability, please speak with me and with the Disability Resource Center at (425)564-2498. You will need to obtain the appropriate documentation from the DRC in room B132. The disability accommodation documentation must be given to me before it is needed rather than afterward, so that we can make appropriate arrangements. You will need to make arrangements with the DRC in advance for test-taking or other accommodations.

## Grading:

Grades are based on **seven factors**. (1) Participation and Discussion, (2) “Doing Sociology” Applications, (3) Daily Notecards on the Readings, (4) Quizzes, (5) In –Class Activities or homework assignments distributed in class, (6) one “Your Turn” research paper, and (7) two Exams. Each of these elements is awarded a specific number of points:

Participation/Discussion	50 points
“Doing Sociology” Applications (5 at 10 points/each)	50 points
Daily Notecards on Readings (10 at 10 points/each)	100 points
Quizzes (5 at 20 points/each)	100 points
In class activities (10 at 10 points/each)	100 points
“Your Turn” Research Paper	100 points
Exams (2 at 100 points/each)	200 points

---

**TOTAL**

**700 points**

<i>Grade</i>	<i>Points</i>	<i>Percentage</i>
<i>A</i>	<i>648-700</i>	<i>93–100%</i>
<i>A–</i>	<i>627-647</i>	<i>90–92%</i>
<i>B+</i>	<i>613-626</i>	<i>88-89%</i>
<i>B</i>	<i>578-612</i>	<i>83-87%</i>
<i>B-</i>	<i>557-577</i>	<i>80-82</i>

<i>Grade</i>	<i>Points</i>	<i>Percentage</i>
<i>C+</i>	<i>543-556</i>	<i>78-79%</i>
<i>C</i>	<i>508-542</i>	<i>73-77%</i>
<i>C-</i>	<i>487-507</i>	<i>70-72%</i>
<i>D+</i>	<i>473–486</i>	<i>68–69%</i>
<i>D</i>	<i>417–472</i>	<i>60–67%</i>
<i>F</i>	<i>416 &amp; Below</i>	<i>59% &amp; Below</i>

Please also note that your grades will be available 24/7 on [Jupitergrades.com](http://Jupitergrades.com). A generic ID # and password will be distributed to you within the first week of the quarter. Make sure you log on and check in frequently, so you know exactly where you stand throughout the quarter!

## Description of the 7 Grading Components:

### 1. Participation/Discussion: (50/700 points)

Participation is essential to the format of this class and will therefore contribute significantly toward your grade. In short, your success in this class depends on your active participation. Participation includes attendance, getting to class on time, class discussions, and group work. As mentioned under *General Course Rules and Expectations*, more than three unexcused absences or late attendances will lower your grade, and continue to do so as you miss more classes. To have an absence or tardy considered excused, you must discuss it with me prior to the absence or tardy, unless it is an emergency. Excused absences include doctor's visits, family emergencies, and sometimes work-related issues. Furthermore, disruptive behavior, excessive talking, texting while in class, or other interruptions will lower this portion of your grade. See the *General Course Rules and Expectations* for details about what is considered disruptive behavior. Do not take this portion of your grade lightly!

### 2. "Doing Sociology" Applications: (50/700; 10 points each)

For these assignments, students will be asked to go out of the classroom, conduct their own sociological observations, and complete a short 1 page typed write-up of their findings. The purpose of these assignments is for students to apply a sociological lens to everyday encounters. Students might be asked to go to a fast-food restaurant and observe interactions between customers and workers or violate a social norm and reflect on that violation. These assignments will be discussed and assigned **RANDOMLY** in class and due the following class period, so they cannot be made up. Be there to get the scoop!

### 3. Daily Notecards on the Readings: (100/700 points; 10 points each)

For each day that a reading is assigned, you will need to submit a notecard about the readings for that day. If there are multiple readings, you must write on all readings assigned on a given day. At the beginning of each class period, I will collect your 3x5 notecard. Notecards must be turned in **at the start of class at 9:30 – late notecards will not be accepted** and **I will not accept notecards submitted at the end of the class period.** The purpose of these cards is to help you keep up with the readings as well as help facilitate a more informed discussion for that day's class period. I will collect the cards every day in order to keep track of your attendance, although they won't always be graded. *So if you are in class, but have not done the reading, turn in a notecard with your name on it so I can mark you as present for that day.* Eleven times during the quarter, however, I will announce at the beginning of class that "your notecards will be graded today." For those graded notecards, you will receive a score of between 0 and 10. Notecards must follow a particular format, as described below, and must include your name, date, title of the article and author, a minimum of 5-6 sentences providing the thesis of the article, and any definitions or key terms that is discussed in the reading. You can use your notecards (and only your notecards) to help you on your exams - so spending some time now defining key terms and naming the thesis of the articles will help you when the exam comes. Your lowest notecard grade will be dropped. The guidelines for submitting your notecards are as follows:

NAME		
	TITLE OF ARTICLE & AUTHOR	DATE
	THESIS OF ARTICLE – 5-6 Sentences describing the main arguments of the article	
	List/Define any Key terms discussed in the article on the back of the notecard	

#### **4. Quizzes: (100/700 points; 20 points each)**

Over the course of the quarter, you will be given 5 short quizzes on the reading materials. Quizzes will be held at the beginning of class, so if you come in late, you will miss the quiz and receive a zero grade. Unless you have discussed being absent on a quiz day with me in advance, quizzes cannot be made up. Quizzes will typically be short answer, although I may throw in a multiple choice question once in a while. The purpose of these quizzes is to ensure that you have done the readings and understand them on a basic level. These quizzes will also help you in learning material for your exams.

#### **5. In-Class Activities and Homework Assignments: (100/700 points; 10 points each)**

Over the course of the quarter, you will be asked a total of 11 times to submit work that you have completed during the class session. These in-class activities can occur either individually or in a group. **They will be randomly delivered and cannot be made up.** Usually, they will consist of a short piece of writing/reflection or response to something we have read or an application of terms/material covered in readings. Your lowest activity grade will be dropped.

#### **6. “Your Turn” Research Paper: (100/700 points)**

You will notice at the end of each chapter a section entitled “Your Turn.” The goal of this assignment is to personalize and apply the material discussed in each chapter. I encourage you to look at the assignment directions in advance at the beginning of each new chapter/section, so that you familiarize yourself with the expectations of each assignment. You will have 10 “opportunities” to submit 1 paper. The directions and guidelines are listed in the text and due dates are noted on the syllabus. Each assignment should be approximately 4 pages (typed) in length. These papers should integrate the textbook information as well include some outside research that you have completed. The nature of the assignment listed will determine what kind of research you need to complete (interview vs. data collection vs. observation). Please see the writing guidelines in the syllabus for specific formatting details. You can visit the Writing Lab on campus if you need assistance with getting started. Note that you cannot re-do a paper once it is submitted so make sure you take your time on this assignment.

#### **7. Exams: (200/700 points)**

Over the course of the quarter, you will take two exams that integrate the course’s in-class activities (lectures, films, etc.) and readings. Exams are designed to make sure you understand important course concepts and themes. Exams will include multiple choice and short answer questions. Please note that you cannot make up missed exams. The first exam will be split between two days during our class period. The first section will include multiple-choice on Wednesday, October 24<sup>th</sup> and the second day will be comprised of short answer on Thursday, October 25<sup>th</sup>. The second exam will be over material discussed during the latter half of the class, so it will not be comprehensive. The second exam will be on Friday, December 7<sup>th</sup> during our scheduled exam time, 9:30 – 11:20, so plan ahead. Please note that I do not give make-up exams, allow students to take exams early or late.

**PLEASE NOTE THAT IF YOU HAVE ANY QUESTIONS, COSIDERATIONS, OR COMPLAINTS ABOUT A GRADE YOU RECEIVED, I ASK YOU TO TAKE 24 HOURS TO REEXAMINE THE ANSWERS OR THE WRITING THAT YOU SUBMITTED AND THEN COME AND TALK WITH ME.**

**\*\* General Guidelines for All Written Work \*\***

All papers or written work should be typed, in Times New Roman, 12 point font, double-spaced with 1” margins on all sides, and stapled. Assignments are due at the beginning of class before the door closes– promptly at 9:30 a.m. – no late work will be accepted. Late papers or assignments will receive a zero. No emailed assignments will be accepted. Your work must be cited in MLA style and you must always give proper credit to the texts from which you draw and formulate your ideas. Title pages and bibliographies are not counted toward the minimum page requirements. Student information (name, assignment title, class) is single-spaced, at the top left-hand side of the page. Do not put extra spaces between paragraphs and paragraphs contain no less than four sentences. Magazines, newspapers, journals, and books are *italicized*. Movie titles, article titles, song titles, etc. are “in quotation marks.” Quotes inside of a quotation use ‘single quotation marks.’ Papers should be written from an academic perspective – so no colloquial language please!



**Instructor Notes:**

If at any point throughout the quarter you are confused or unclear about the expectations of the course, course material, a grade you received, or any other matters, I strongly encourage you to come talk with me early. It is my goal that all students succeed in this course; but, I can only help you if you meet me half way. Furthermore, if you are having personal problems or other issues going on outside of school, please let me know. I recognize that we all have lives outside of school, and am very willing to work with students, but I can only do so if I know there is a problem!



## Syllabus

You should be looking at your syllabus on a daily basis so you know what is expected of you in class. Also, you are expected to have read the readings assigned for the current day by the time you arrive in class!

\*\*Though I will try to remain as faithful as possible to this syllabus, I reserve the right to make changes. These will be announced in advance in class. \*\*

### Week 1

#### **Tuesday, September 18<sup>th</sup>: Introduction to the Course**

Go over syllabus; class introductions; beginning definitions

#### **Wednesday, September 19<sup>th</sup>: Course Introductions: Getting to Know Your Peers**

Continue going over syllabus and introductions

#### **Thursday, September 20<sup>th</sup>: What is Sociology?**

Readings: "Taking a New Look at a Familiar World," pp. 3-12

#### **Friday, September 21<sup>st</sup>: Understanding the Sociological Imagination**

Readings: "Emile Durkheim: A Sociological View of Suicide," pp. 12-17



### Week 2

#### **Monday, September 24<sup>th</sup>: Employing the Sociological Imagination**

Readings: "Becoming a Certain Body," by Hesse-Biber on course website  
**"Your Turn" Opportunity 1 (pg. 17) Due**

#### **Tuesday, September 25<sup>th</sup>: The Social Construction of Reality**

Readings: "Building Reality: The Social Construction of Knowledge," pp. 55-63  
**Quiz #1 over Material 9/18-9/24**

#### **Wednesday, September 26<sup>th</sup>: Self-Fulfilling Prophecies & Understanding Conflict and Power**

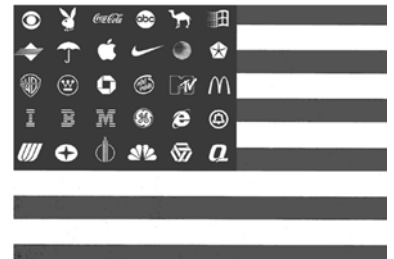
Readings: "Building Reality," pp. 63-80

#### **Thursday, September 27<sup>th</sup>: How Individuals Structure Society**

Readings: "Seeing and Thinking Sociologically," pp. 19-26

#### **Friday, September 28<sup>th</sup>: Societal Influences and How Social Structures Impact Our Everyday Lives**

Readings: "Seeing and Thinking Sociologically," pp. 26-34  
**"Your Turn" Opportunity 2 (pg. 89) Due**



### Week 3

#### **Monday, October 1<sup>st</sup>: Cultural and Subcultural Influences**

Readings: "Seeing and Thinking Sociologically," pp. 34-37

#### **Tuesday, October 2<sup>nd</sup>: Understanding Social Order**

Readings: "Seeing and Thinking Sociologically," pp. 46-50

#### **Wednesday, October 3<sup>rd</sup>: Individuals Shaping Society; Social Structures Shaping Individuals**

Readings: "The My Lai Massacre: A Military Crime of Obedience," by Kelman and Hamilton on course website  
**"Your Turn" Opportunity 3 (pg. 50) Due**





**Thursday, October 4<sup>th</sup>: Culture and History**

Readings: "Building Order," pp. 98-110

**Quiz #2 over material from 9/25 – 10/3**

**Friday, October 5<sup>th</sup>: Cultural Norms and Social Institutions**

Readings: "Building Order," pp. 110-131



**Week 4**

**Monday, October 8<sup>th</sup>: Ethnocentrism and Cultural Relativism**

Readings: "Body Ritual among the Nacirema," by Horace Miner on course website

**Tuesday, October 9<sup>th</sup>: No Class – College Issues Day**

**Wednesday, October 10<sup>h</sup>: Assimilation versus Acculturation**

Readings: "The Melting Pot," by Anne Fadiman on course website

**Thursday, October 11<sup>th</sup>: Identity, Socialization, and Social Structures**

Readings: "Building Identity," pp. 134-145

**"Your Turn" Opportunity 4 (pgs. 131-132) Due**



**Friday, October 12<sup>th</sup>: Stratification and Inequality**

Readings: "Building Identity," pp. 145-152

**Week 5**

**Monday, October 15<sup>th</sup>: Race, Class, and Socialization**

Readings: "Life as a Maid's Daughter," by Mary Romero on course website

**Tuesday, October 16<sup>th</sup>: Institutions and Socialization**

Readings: "Building Identity," pp. 152-154; 161-166

**"Your Turn" Opportunity 5 (pg. 166) Due**

**Wednesday, October 17<sup>th</sup>: Self-Presentation and Impression Management**

Readings: "Supporting Identity," pp. 168-176

**Quiz #3 over material from 10/4-10/16**

**Thursday, October 18<sup>th</sup>: No Class (Conference in Baltimore)**

*Review for Exam #1*

**Friday, October 19<sup>th</sup>: No Class (Conference in Baltimore)**

*Review for Exam #1*



**Week 6**

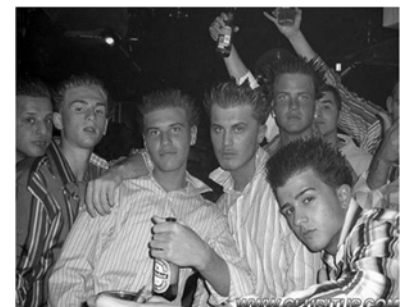
**Monday, October 22<sup>nd</sup>: Dramaturgy and the Social Stage**

Readings: "Supporting Identity," pp. 176-194

**Tuesday, October 23<sup>rd</sup>: Collective Management**

Readings: "The Girl Hunt," by David Grazian on course website

**"Your Turn" Opportunity 6 on course website**



Wednesday, October 24<sup>th</sup>: Exam #1 – Part 1

Thursday, October 25<sup>th</sup>: Exam #1 – Part 2

Friday, October 26<sup>th</sup>: No Class – Professional Development Day

## Week 7

Monday, October 29<sup>th</sup>: Exercise in Stratification

Tuesday, October 30<sup>th</sup>: Stratification and Social Class

Readings: “The Architecture of Stratification,” pp. 317-327

Wednesday, October 31<sup>st</sup>: Class Inequality in the U.S.

Readings: “The Architecture of Stratification,” pp. 327-342

Thursday, November 1<sup>st</sup>: In Class Activity on the Poverty Line

Friday, November 2<sup>nd</sup>: The Uses of Poverty

Readings: “The Architecture of Stratification,” pp. 342-355



## Week 8

Monday, November 5<sup>th</sup>: Class as Culture and Discussion of Welfare “Reform”

Readings: “Avenue to Adulthood: Teenage Pregnancy and the Meaning of Motherhood in Poor Communities,” by Gabrielle Raley on course website  
“Your Turn” Opportunity 7 (pp. 355) Due

Tuesday, November 6<sup>th</sup>: White Privilege and Racial Oppression

Readings: “White Privilege,” by Peggy MacIntosh on course website  
Quiz #4 over Material from 10/29 – 11/5

Wednesday, November 7<sup>th</sup>: Racial Prejudice, Discrimination, and Racism

Readings: “The Architecture of Inequality,” pp. 376-389

Thursday, November 8<sup>th</sup>: Racial and Ethnic Inequality: Historical Considerations

Readings: “Willie Lynch’s Letters,” on course website

Friday, November 9<sup>th</sup>: Historical Considerations Continued

Readings: “The Architecture of Inequality,” pp. 364-376



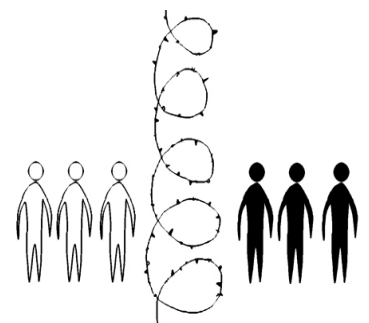
## Week 9

Monday, November 12<sup>th</sup>: NO CLASS

Tuesday, November 13<sup>th</sup>: Tracing White Supremacy: Historical Considerations

Wednesday, November 14<sup>th</sup>: Institutionalized Racism

Readings: “The Architecture of Inequality,” pp. 389-404



**Thursday, November 15<sup>th</sup>: Race as a Social Construction**

Readings: "The Architecture of Inequality," pp. 358-364

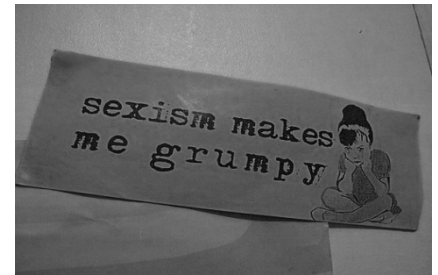
"Optional Ethnicities: For Whites Only," by Mary Waters on course website

**"Your Turn" Opportunity 8 (pg. 404) Due**

**Friday, November 16<sup>th</sup>: Inequality in Sex and Gender**

Readings: "The Architecture of Inequality," pp. 406-412

**Quiz # 5 on material 11/6-11/15**



**Week 10**

**Monday, November 19<sup>th</sup>: Connecting Gendered Oppression to Homophobia**

Readings: "The Architecture of Inequality," pp. 412-417

**Tuesday, November 20<sup>th</sup>: The Ideology of Sexism**

Readings: "The Architecture of Inequality," pp. 417-419

**Wednesday, November 21<sup>st</sup>: Institutions of Gender Inequality**

Readings: "The Architecture of Inequality," pp. 419-429

**Thursday, November 22<sup>nd</sup>: No Class - Holiday**

**Friday, November 23<sup>rd</sup>: No Class – Holiday**

**Week 11**

**Monday, November 26<sup>th</sup>: Gendered Jobs and Economics**

Readings: "The Architecture of Inequality," pp. 429-434

"Still a Man's World," by Christine Williams on course website

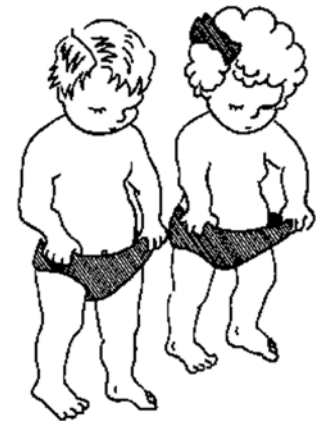
**Tuesday, November 27<sup>th</sup>: Women Worldwide**

Readings: "The Architecture of Inequality," pp. 434-436

**Wednesday, November 28<sup>th</sup>: Creating Social Change**

Readings: "Architects of Change," pp. 473-485

**"Your Turn" Opportunity 9 (pg. 436-437) Due**



**"OH! THAT EXPLAINS THE DIFFERENCE IN OUR PAY"**

**Thursday, November 29<sup>th</sup>: Social Movements**

Readings: "Architects of Change," pp. 485-503

**Friday, November 30<sup>th</sup>: Collective Action – Examples**

Readings: "Muslim American Immigrants after 9/11," by Pierrette Hondagneu-Sotelo on course website

**Week 12**

**Monday, December 3<sup>rd</sup>: Collective Action- Examples**

Readings: "Challenging Power," by Celene Krauss on course website

"Aquí estamos y no nos vamos!: Global Capital and Immigrant Rights," by William Robinson on course website

**Tuesday, December 4<sup>th</sup>: Revisiting the Sociological Imagination and Review for Final Exam**

Readings: "Architects of Change," pp. 504-507

**Your Turn Opportunity #10 (pg. 507) Due**

**Wednesday, December 5<sup>th</sup>: No Class**

**Thursday, December 6<sup>th</sup>: No Class**

**Friday, December 7<sup>th</sup>: Exam #2 (9:30-11:20) in C-164**

