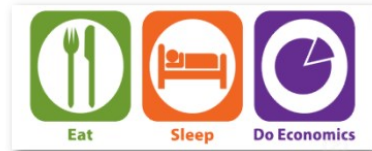


Microeconomics
ECON& 201 (Formerly ECON 201)
Fall 2009

Bellevue College
Social Sciences Division
Department of Economics

Instructor: Grace Kim Robbins
Email: grace.robbings@bellevuecollege.edu
Phone: 425.564.2370
Office: D200B
Office Hours: T/Th: 4:00 – 5:30; W: 1:30 – 3:30
Meeting Times: T/Th: 5:30 – 7:40
Location: C208
Course website: <http://www.aplia.com>
Credit: 5 credit course
Prerequisites: Recommended 30 prior college credits



Course Information

Economics provides a useful perspective and set of tools for analyzing and interpreting the world around us. Many people have the misconception that economics only deals with money and business decisions, but in this course we will learn how economic analysis extends to a much wider variety of social behavior and decision-making. Economics offers a way of understanding the decision-making process of weighing marginal costs and marginal benefits for individuals, firms, and government.

Economics 201, a microeconomics course, investigates the responses of individual economic agents to incentives. This course provides the framework for analyzing simple models of choice for individual markets and industries within a mixed economy. The structure and outcomes of the basic model can then be modified to analyze a variety of market structures and be used to address a range of social issues, using the common policy goals of efficiency and equity.

Learning Goals and Objectives

The Economics Department at Bellevue College has proposed the following course outcomes for Microeconomics. By the end of the quarter, students will be able to do the following:

- Be able to evaluate economic examples as they related to personal incentives, voluntary exchanges, and to recognize the key concept of opportunity cost.
- Be able to set-up and identify, both graphically and in words, a competitive market model's associated components and outcomes (demand, supply, price, equilibrium) and their link to utility theory, and various production decisions.
- Apply the basic model's approach to factor markets.
- Expand the basic model to address elements of market failures.



- Be able to calculate both marginal and average values for a variety of data sets and be able to use them appropriately within decision-making evaluations of choices.
- Understand the value of the competitive market model's outcome as a benchmark for evaluating more realistic models of industrial organization and government activity.
- Recognize and apply 'economic thinking' to various policy issues and applied problems, incorporating appropriately both positive and normative elements of analysis, with measures of efficiency and equity.

In addition, students may be introduced to a subset of the following:

- Elasticity as a measure of quantity's responsiveness to changes in prices or income
- Coase Theorem and transaction costs as they pertain to market failures
- Maximizing behavior and the limitations of rationality assumptions for households, firms and government agents
- Discuss, in depth, alternative mechanisms of allocation beyond the market mechanism of the price signal

Required Text and Resources



The textbook we will be using for this course is *Microeconomics* by Paul Krugman and Robin Wells (2nd edition). The textbook is available online bundled with the access to Aplia, a website we will use for homework problems. See registration information below.

Although it is NOT required, some people prefer to read from a physical copy of a textbook, and you can purchase a hard copy from the Aplia website for \$52. You can feel free to shop around for the textbook from other sources. You may want to consider purchasing a previous edition of the textbook as a more affordable option (copies can be found online from \$13). Copies of the textbook are also available on reserve in the Library Media Center.

APLIA (www.aplia.com):

During this course, to complete certain assignments, you will be required to access a website dedicated to students and professors of economics. To access the website, you need to register for an account with Aplia at www.aplia.com. The Course Key for our class is "2YUC-C9TE-NLSD". I will provide you with an instruction sheet to help you register. Please register on the website within 24 hours after I pass out the course key.



You should think of the Aplia site as a source for

1. informational tutorials on certain topics covered in the class;
2. practice, non-graded exercises to give you immediate feedback on what you are reading;
3. graded homework exercises that assess your understanding of material covered.

Many assignments come in pairs of practice and graded problem sets. The practice sets give you immediate feedback about whether your answer is right or wrong and an explanation of the correct answer. They are not counted as part of your course grade, and although they have a deadline listed

in the course outline in Aplia, the date listed is for organizational purposes only—there is no firm deadline. Use them to check your understanding of the material. If you are confident, you can go directly to the graded problem set, and refer back to the practice set only if you want some additional help. The graded problem sets do have a firm deadline and do count towards your final course grade, as outlined below.

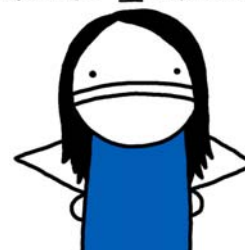
You should register and make yourself familiar with the Aplia software as soon as possible. The cost of Aplia is \$80 per student for this class for the quarter. You may register and use the website through 25 April 2010 without paying the fee. If you are considering dropping this course during the drop/add period, do not make a payment until you are certain you will be staying with us for the whole quarter. You will need to pay the full amount before the end of the grace period to continue using the site. You may pay online with a credit card or personal check, or you can mail a check or money order to the address provided on the Aplia site.

Student Responsibilities

Students are expected to:

- come prepared to every class. (Prepared means arriving on time with all materials needed for class and having read the relevant sections for discussion.)
- inform me ahead of time if they can't attend a class.
- be responsible for material covered when they miss a class. Please first ask your teammates or peers about what material was covered in your absence, and then come to my office hours to ask any clarifying questions.
- know and meet the deadlines for all assignments and exams. Please note that no make-up assignments or exams are offered!
- come for extra help before any small misunderstandings become major learning gaps.
- keep cell phones stored away and silent. Please do not answer calls during class time!
- gain access to the internet. Students should maintain access and cope with any technology problems (including viruses!) that involve your own machine or software.
- know BelleC's policies on withdrawing and other quarterly commitments
- complete their own work and be familiar with Student Code of Conduct at Bellevue College, especially with respect to cheating, stealing, and plagiarizing.

WHERE'S MY BAILOUT??



Attendance Policy

Your attendance is very important for a number of reasons: you will have a chance to practice applying what we are learning in class; you will be able to clarify concepts and ask questions as they arise; I will be able to monitor the progress of the class and adjust the pace; you will learn from your peer's contributions and questions; and your peers will learn from your contributions and questions. As such you are expected to come to every class!

In order to align your incentives, for every entire class you attend you will receive **13 attendance points**, 1 point for every 10 minutes of class. These points will count as part of your In-Class

Assignment grade as outlined below. If you arrive late, you will lose 1 point for every portion of a 10-minute interval of class which you miss. If you leave early, you will lose 1 point for every 10-minute interval of class which you miss. (For example, if you arrive 2 minutes late (-1) and leave 11 minutes early (-2), you will receive only 10 attendance points.) Attendance will be taken by a designated team member starting in the second week of class, and all team members will lose all points for the week if the information is recorded incorrectly.



Please do not come to class when you are sick!! **If you are sick** and unable to attend class, you will have a chance to earn these 13 attendance points back: select an article published the day or the week of your absence, and complete the “Absence Make-Up Questions” about the articles. The document with these questions can be found under “Course Materials” in the Aplia website.

Grading Policy

The best way to learn economics is by doing, not by memorizing. By completing regular work in association with the lectures, you will better prepare yourself for the lectures and exams in the course. Cramming is not an effective method of learning. There will be a variety of homework assignments, exams, and activities in which students will demonstrate how they have learned to implement economic reasoning and analysis. Aplia offers a plethora of practice problems, providing students with ample opportunity to check their level of understanding before sitting for in-class assessments. We will complete a number of assignments as teams in class, provided even more opportunities to practice applying the concepts. In addition to these practice problems, you can practice using the end of chapter problems from the textbook.

Students who have been successful in my courses in the past have been those who have taken advantage of all practice opportunities and have worked hard to understand the material. What students take away from the course is generally directly correlated to the amount of work they put into the course. I (of course) want all students to be successful in the course, and I am here as a resource to you to help you achieve success. However, please understand that you are ultimately responsible for your own progress in the course; I don't give you your grade, you earn your grade. If you are unhappy with your performance in the class, I hope you can feel free to talk to me about strategies to improve your performance, and I encourage you to do so as early as possible.

Grading scale:

93% +: A	73 – 76%: C
90-92%: A-	70 – 72%: C-
87-89%: B+	67 – 69%: D+
83-86% B	63 – 66%: D
80-82%: B-	60 – 62%: D-
77 – 79%: C+	Below 60: F

Remember, according to BCC:

A grades indicate *outstanding achievement*
B grades indicate *high achievement*
C grades indicate *satisfactory achievement*
D grades indicate *poor achievement*
F grades indicate *unsatisfactory achievement*

Grades will be based on the following weights:

Aplia Graded Problem Sets	20%
In-Class Assignments, Attendance, and Participation	20%
Writing Assignments	$2 \times 15\% = 30\%$
Exams	$2 \times 15\% = 30\%$

Aplia Graded Problem Sets

The graded problem sets should be completed individually (although students will have access to their textbooks as a resource during these assessments). The graded problem sets have a firm due date. You can change your answers as many times as you like before the due date has passed. Once the due date has passed, the grade will be recorded and it will not be possible to change your answers or complete the assignment at this point. In other words, Aplia assignments must be completed by the due date. The software does not care whether you have an excuse or not. These assignments are posted weeks in advance. Do them early to avoid any emergencies preventing your completion before the due date. After the due date, you will be able to see the correct answers and the explanations for graded problems.

Aplia problem sets make use of the “Grade It Now” feature, which offers you 3 chances to answer a question. Your score on the question is the average of the scores of the attempts you take.

Students begin the quarter with 2 Free Passes for homework assignments. The top grades (by percentage as each has a different number of questions) will count towards the grade. Since the 2 lowest scores are dropped, and since the materials are available well in advance, no missing assignments will be made up for any reason, even those that are not the student’s “fault”, including computer glitches, illness, travel, burglary, etc.

In-Class Assignments

There will be a number of in-class assignments throughout the quarter, generally completed as part of a team. (Team selection will happen in class during the first week of the quarter.) These activities or group quizzes are designed for the application of economic concepts and theories to real world examples. Attendance in class and participation in the activities are an important part of your grade. These assignments are not available before they are to be completed in class, but they will be posted on the Aplia website after they have been covered in class.

If you are sick and miss an in-class assignment, and if you have completed the article summary and explanation as outlined under the “Attendance Policy” above, you can submit an individual in-class assignment for partial credit. The maximum score that you can receive is 20% less than your team’s score for that assignment so that you can feel the external cost you have imposed on your team with your absence.

To offer some more incentive to participate in class, students will have a chance to earn Branston Bucks to improve their grades. Students who participate in class or office hours by answering or asking questions or who demonstrate excellent classroom behavior will earn Branston Bucks, which can be used during the last week of class to buy back points missed from the In-Class Assignments score.



Writing Assignments

We will have two writing assignments during the quarter. After being presented with information regarding a certain issue of interest and discussing the issue within the team, each student will then write a 1-2 page (single-spaced) analysis paper. More information regarding the topics as well as the grading rubrics will be provided in class.

Examinations

There will be two, closed-book, closed-note, individually-completed exams during the quarter. The exams are generally a combination of multiple choice and short answer questions that apply the economic concepts we learn. No make-up exams are offered, so please put these dates in your calendar or planner now!!

Exam I	Thursday, 13 May 2010	Ch 1-11
Exam II	Thursday, 10 June 2010	Ch 12-21 (excl. 20)

Preventing Plagiarism: Plagiarism is a form of academic dishonesty occurring when students use information or material from outside sources and do not properly cite those sources. This is grounds for disciplinary action. It is your responsibility to understand plagiarism and its consequences. Plagiarism occurs if:

- You do not cite quotations and/or attribute borrowed ideas.
- You fail to enclose borrowed language in quotation marks.
- You do not write summaries and paraphrases in your own words and/or do not document your source.
- You turn in work created by another person.
- You submit or use your own prior work for a current or past course, or work from one current course in another course *without express permission* from your professors. This may also be considered academic dishonesty.

Consequences: If it is determined that you have plagiarized or engaged in other forms of academic dishonesty, you will likely fail the assignment and possibly the course, despite points earned through other work. Acts of academic dishonesty are reviewed for disciplinary action.

Please see the following Writing Lab link for more information regarding plagiarism:
<http://bellevuecollege.edu/writinglab/Plagiarism.html>

No extra credit will be offered under any circumstances! It is your responsibility as a student to be aware of the expectations set forth for this course. If these expectations of you are unclear, please come and speak with me as early as possible. You are responsible for monitoring your own progress in the course.

Approximate Course Schedule

Week	Chapters Covered
1	T: Intro, Ch 1 Th: Ch 2
2	T: Ch 3 Th: Ch 4
3	T: Ch 5 Th: Ch 6
4	T: Ch 7 Th: Ch 8
5	T: Ch 9 Th: Ch 10
6	T: Ch 11 Th: Exam I (13 May)
7	T: Paper I due (no class) Th: Ch 12
8	T: Ch 13, 14 Th: Ch 15, 16
9	T: Ch 17, 18 Th: Ch 19
10	T: Ch 21 Th: Exam II (10 June)
11	T: Paper II due (no class)

Resources

I strongly encourage you to come and speak with me frequently, especially if you are concerned with your progress in the course. I like to think of myself as very available and responsive to students, so please drop by any time. Some other resources that are available to you on campus include:

Disability Resource Center

Students with disabilities who have accommodation needs are required to meet with the Director of Disability Support Services (in Room B132) to establish their eligibility for accommodation. Telephone: (425)564-2498 or TTY (425) 564-4110. In addition, students are encouraged to review their accommodation requirements with each instructor during the first week of the quarter.

Writing Lab (Academic Success Center)

The Bellevue Community College Writing Lab gives students a free place to go for revision of **any** writing project, including class assignments, college applications, resumes, and personal projects. During 25-minute sessions, tutors in the Writing Lab help students individually by identifying weaknesses in a student's writing and explaining how to overcome them. To arrange an appointment in the writing lab to have your paper checked, please call 425-564-2200 or stop by D-204.

Math Lab (Academic Success Center)

Students who are enrolled in a math class can stop by D-207 for help on math related problems.

Academic Tutoring (Academic Success Center)

Drop-in or individual tutoring may be available for students with a grade of C or below. Please stop by D-204 to ask about eligibility and/or to apply.

MCS – Multicultural Services

MCS has a very friendly staff who can answer any questions or provide help in a variety of areas. They can help you plan to complete college successfully, help you with financial aid application process, help you select classes, connect you with campus resources, help you talk with instructors, connect you with community resources that can help you with food, transportation, and temporary housing challenges, and generally support you in overcoming non-academic and academic challenges. They are located in the B-building above the bookstore.

TriO

The TriO program provides extensive academic support, personal assistance, and financial aid guidance for students who qualify (first generation college students, low-income students, or students with a documented disability).

PROCEDURES AND GUIDELINES OF THE SOCIAL SCIENCE DIVISION

Revised Spring 2009

Cheating, Stealing and Plagiarizing*

Cheating, stealing and plagiarizing (using the ideas or words of another as one's own without crediting the source) and inappropriate/disruptive classroom behavior are violations of the Student Code of Conduct at Bellevue College. Examples of unacceptable behavior include, but are not limited to: talking out of turn, arriving late or leaving early without a valid reason, allowing cell phones/pagers to ring, and inappropriate behavior toward the instructor or classmates. The instructor can refer any violation of the Student Code of Conduct to the Dean of Student Services for possible probation or suspension from Bellevue College. Specific student rights, responsibilities and appeal procedures are listed in the Student Code of Conduct, available in the office of the Dean of Student Services.

Incomplete

If a student fails to complete all the required work for a course, an instructor may assign the grade of Incomplete ("I"). The student must complete the coursework by the end of the next quarter, or receive the assigned letter grade (usually an "F").

F Grade

Students who fail a course will receive a letter grade of "F."

Final Examination Schedule

The Social Science Division will adhere to the final examination schedule as stated in the BC Schedule. Final examinations will be held at the end of each quarter at fixed times. Instructors will not give examinations in advance of the regular schedule. A student who is absent from any examination held at any time during the quarter may forfeit the right to make up the examination. If, for illness or some other circumstance beyond the student's control, the student is unable to be present at any scheduled examination and has contacted the instructor on a timely basis, the student may be permitted to take such examination at a time designated by the instructor.

Withdrawal From Class

College policy states that students must formally withdraw from a class by the end of the seventh week of the quarter (Registration Office, B125). If a student has not withdrawn by that date, an appropriate letter grade will be assigned for the course.

Hardship Withdrawal

Instructors may assign the grade of "HW" (hardship withdrawal) at their discretion in the event that a student cannot complete the coursework due to extreme and exceptional circumstances. Students may also contact the Enrollment Services office BEFORE grades are assigned in cases of hardship.

Students Who Require Disability Accommodations:

Students with disabilities who have accommodation needs are encouraged to meet with the [Disability Resource Centre](#) (DRC) office located in B132 (telephone 425.564.2498 or TTY 425.564.4110), to establish their eligibility for accommodation. The DRC office will provide each eligible student with an accommodation letter. Students who require accommodation in class should review the DRC accommodation letter with each instructor during the first week of the quarter.

Students with mobility challenges who may need assistance in case of an emergency situation or evacuation should register with [Disability Resource Centre](#), and review those needs with the instructor as well.

Distribution of Grades

Grades will not be posted in the Social Science Division or in faculty offices, and secretaries will not give out grades. Students should access their grades through the BC Web site.

Return of Papers and Tests

Paper and/or Scantron score sheet returns will be arranged in the following ways ONLY: by mail, if student supplies the instructor with stamped, self-addressed envelope (with appropriate postage); or by the instructor designating a time and place whereby the student may retrieve his/her papers. Unclaimed papers and/or Scantron score sheets must be kept by the instructor for a minimum of sixty (60) instructional days following the end of the quarter.

**If you are accused of cheating, stealing exams and/or plagiarism, there is a Bellevue College Student Discipline and Appeals Procedure (the right to due process) which you may pursue. Contact the office of Division Chair (D110), the Dean of Student Services (B231A) or the Associated Student Body (C212) for information regarding the appeals process.*