



ARCHAEOLOGY

ANTH& 204 [Item 5057]

Bellevue College, Washington, USA

Syllabus – Spring Quarter – 2018



IT'S NOT WHAT YOU FIND; IT'S WHAT YOU FIND OUT! - David Hurst Thomas

Welcome to the fascinating world of archaeology!

The past is a fascinating like a foreign land and archaeologists are uniquely equipped to investigate it. What is it like to go on a dig and do archaeology? What does one typically find on a dig? Why do archaeologists dig? How do we know where to dig? How do we know how old something is and from where it came? What makes archaeology a science? How are we able to piece together the past from fragmentary remains? Why do archaeologists sometimes choose not to dig? How do you become an archaeologist? How did ancient people live, where did they live, and how do we know?

Stay tuned to find out the answers to these questions and more!

To plug into the past, you'll need to unplug the present.

NO cell phones, laptops, tablets, etc. in class. Be in the moment!

Who is teaching this course?

Professor: Dr. N. Gonlin ("Dr. G")

Messages: CANVAS and nan.gonlin@bellevuecollege.edu

Office Phone: 425.564.2347

Mailbox location: D110 in the Social Science Division Office

Classroom: D101

Class Hours: Monday/Wednesday 10:30 am – 12:20 pm;

Plus, Online through CANVAS

Office location: D100E (Just behind our classroom)

Office Hours: Mondays: 9:15 am – 10:15 am & 12:20 – 1:50 pm

Wednesdays: 9:15 am – 10:15 am & 12:20 – 1:50 pm



Course Syllabus

You are required to review this syllabus and the attached Procedures and Guidelines of the Social Science Division. Enrollment in the course constitutes an agreement to abide by the policies set forth in these items. You will be required to sign and submit a form that documents this agreement. Please carefully read over this syllabus and all class documents. Download a copy of the “Course Agreement Form”, electronically sign and date it, save the file, and upload it to our CANVAS course site by Wednesday, April 4, 2018.

Affirmation of Inclusion

- Bellevue College is committed to maintaining an environment in which every member of the campus community feels welcome to participate in the life of the college, free from harassment and discrimination. We value our different backgrounds at Bellevue College, and students, faculty, staff members, and administrators are to treat one another with dignity and respect. This classroom is a SafeSpace. Please check this URL for further information: <http://www.bellevuecollege.edu/inclusion/>

What Accommodations for Disability does the College have?

“The Disability Resource Center serves students with a wide array of learning challenges and disabilities. If you are a student who has a disability or learning challenge for which you have documentation or have seen someone for treatment and if you feel you may need accommodations to be successful in college, please contact us as soon as possible.

If you are a person who requires assistance in case of an emergency, such as a fire, earthquake, etc, please meet with your individual instructors to develop a safety plan within the first week of the quarter. If you are a student with a documented autism spectrum disorder, there is an additional access program available to you.

Contact asn@bellevuecollege.edu or (425) 564-2764. ASN is in the Library Media Center in D 125. <https://www.bellevuecollege.edu/autismspectrumnavigators/>

The DRC office is in B 132 or you can call our reception desk at (425) 564-2498. Deaf students can reach us by video phone at (425) 440-2025 or by TTY at (425) 564-4110.

Please visit our website for application information into our program and other helpful links at <http://www.bellevuecollege.edu/drc/> “

Please let your professor know in person or by Canvas mail as soon as possible if you have an accommodation. Written notification from the Disability Resource Center is required to provide appropriate accommodation. It takes at least one quarter for accommodations to be granted. One cannot simply state that one needs accommodations; the DRC will request appropriate documentation and make the decision. Only DRC students can be accommodated. Please let your professor know how she can help you.

Anthropology Paper Usage Policy

To conserve resources, the Anthropology Department has implemented a paper use reduction policy. The CANVAS course site will be used to post materials required for class (i.e., readings, activities, syllabus, handouts, lectures, assignments, etc...). Except for the syllabus, you are not expected to print all materials. You are responsible for reading all materials, however. Use your discretion and use resources wisely.

What is the description of this course in the college catalog?

Finding and digging sites is just the beginning of unearthing the past. Archaeologists are scientists who specialize in survey and excavation, as well as analysis and interpretations of ancient and historical remains. The methods, techniques, and goals of archaeology are highlighted to provide a basis on which to understand the rich record of the past.

What General Education requirement is fulfilled by this course?

This course fulfills the General Education requirement of "Connections" for Cultural Diversity.

What are the Course Outcomes?

Upon successful completion of this course, students will be able to:

1. Discuss the scope, applications, history, and current practices of the field of archaeology.
2. Recognize, identify, and employ the scientific method in archaeology, and to distinguish coherent arguments based on such principles from other claims.
3. Describe how archaeological studies reveal characteristics of cultural behavior (technological, organizational, and ideological) and explain how those behaviors have changed through time.
4. Comprehend how archaeologists go about collecting, analyzing, interpreting, and applying their data to resolve questions of cultural evolution.
5. Explain the relevance of archaeology to global issues and cultural diversity.

How will Course Outcomes be met?

- Outcomes will be addressed through lectures, visual materials, readings, activities, and discussions.
- Outcomes will be assessed through tests, homework assignments, discussions, films, and activities. (See detailed information below.)

What is the Course Outline?

I. Introduction

- A. Anthropology as a Social Science
- B. Fields of Anthropology
- C. Archaeology as Anthropology
- D. Archaeology & Ethics

II. Scientific Method & Archaeology

- A. Applications
- B. Limitations
- C. Humanistic Perspectives

III. Nature of the Archaeological Record

- A. Impact of Culture
- B. Impact of Nature

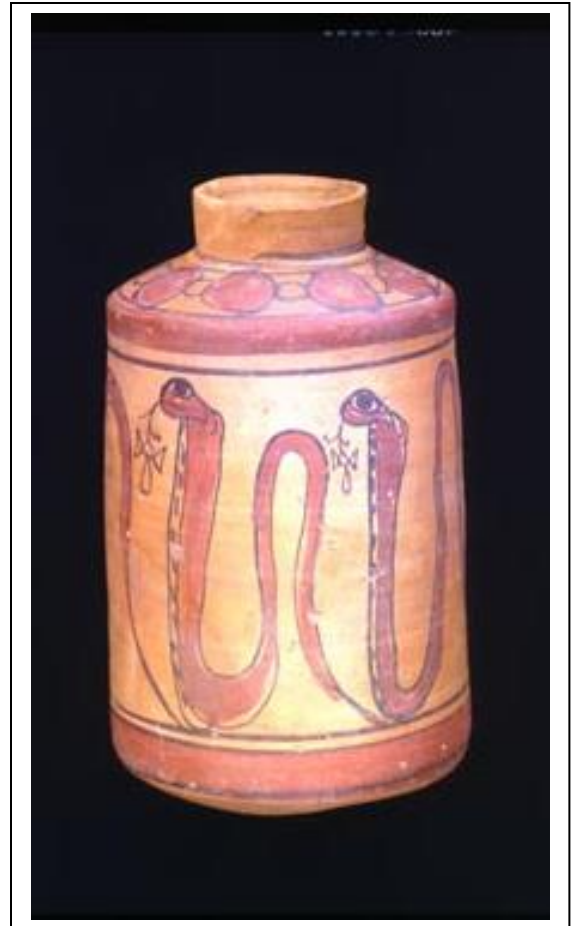
IV. Archaeological Methods

- A. Fieldwork
- B. Analyses
- C. Dating Methods

V. Theory in Archaeology

- A. Historical Perspectives
- B. Current Perspectives
- C. Impact on Research Design

VI. Interpretation of the Past

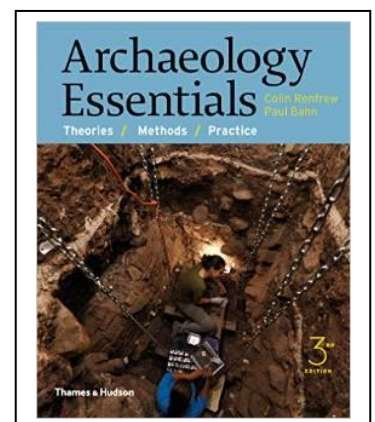


Jar from Meroe Kingdom of Kush, Nubia

300 BC-AD 200

What textbook and materials are required?

- **Textbook:** *Essentials of Archaeology: Theories, Practices, Methods, 3rd edition* (ISBN: 978-0-500-29159-7) by Colin Renfrew and Paul Bahn, Thames & Hudson, London, 2015. Please ensure that you purchase the third edition since there have been significant changes from previous versions of this textbook.



This textbook was chosen for several reasons: 1) it is one of the best on the market; 2) it has ample FREE online support for students (see below); 3) it is comprehensive, yet concise; 4) it is ideal for a 10-week quarter; and 5) used copies are reasonably priced and readily available.

- **Student Supplement:** This textbook comes with FREE online study materials. Access chapter objectives and outlines, sample quizzes, essay questions, and a glossary by going to this URL. Look at the top left of the screen and click on a chapter number:
[Free Study Materials](#)
- **Course Website through CANVAS:** Electronic copies of this syllabus and materials will be available on the course website, accessible via CANVAS. You must have established a student account (see below) to access this material. Paper copies of materials will no longer be distributed, following the college's emphasis on saving resources. You are required to check the CANVAS course site minimally before every class.
- **Additional Materials:**
 - A packet of Scantrons, No. 2 pencils, and clean erasers for test-taking.
 - A notebook/paper to take notes (no laptops/tablets/etc., unless you have a documented need).
 - A packet of 3" x 5" index cards for test-taking.
 - Bring your textbook for every class meeting.

How will you be assessed in this course?

A variety of instructional methods and learning opportunities exists for you to master course content. Please be sure to read over the components of how you will be graded.

Class Requirement	Value	Percent of Grade
Online Discussions	150 points	20.0%
Tests	500 points	66.0%
Ice-Breaker	10 points	1.5%
Earth Week Assignment	30 points	4.0%
Final Assessment	50 points	7.0%
Course Evaluation	10 points	1.5%
TOTAL POINTS	750 points	100.0%

Attendance & Active Participation

- It is well worth your time and effort to regularly attend class and to constructively participate. Attendance is taken at every class and recorded. Tests will focus on material covered in class; your grade will suffer if you do not habitually come to class.
- However, please do not come to class if you are sick. Send a CANVAS message or e-mail *prior* to class to let your professor know if you are ill. Only if you have contacted your professor AHEAD of time, will you be given any consideration for making up any assignments.
- All electronic devices must be turned off before class begins. No tablets, iPads, laptops, etc. can be used during lectures or tests, unless you have a documented need that has been approved by the DRC. Cell phones will not be tolerated.

Homework

- Before each class, it is necessary to complete the assigned readings to participate and to better learn course content. Readings are on the course schedule.

Online Discussions

- There are five online discussions in this course, the dates of which are clearly marked on the course schedule. Each is worth up to 30 points. These discussions occur all online.
- It will be necessary for you to read the discussion article or do research ahead of time (posted on CANVAS) to prepare an initial post. Full instructions for discussions are posted separately from this syllabus. Please check the CANVAS website for instructions.

Tests

- A major portion of your grade will be derived from 5 tests, each worth 100 points.
- To prepare for a test, read all chapters and complete the discussion. Know all the vocabulary words. Access the free online study materials: [Free Study Materials](#)
- Prepare a 3" x 5" index card with notes written (not typed) on it. You can write on the front and back anything you want to help you do well on the test.
- To take a test, bring your filled-out index card, a Scantron, and a #2 pencil to class. Scantrons and pencils are available from the cashier at the BC Bookstore.
- Tests are not comprehensive and will cover only material not covered on previous tests. Questions come from assigned readings, class lectures, videos/DVDs/films, overheads, slides, handouts, discussions, articles, activities, and any other instructional material presented in class or on CANVAS.
- All tests are closed book, so you may not consult any other sources during the test, except the index card that you have prepared ahead of time. Please show up prepared

and on time.

- All electronic devices must be turned off before the start of the test. These devices include MP3 players, computers, laptops, electronic dictionaries, pagers, tablets, cell phones, computers, etc.

Ice-Breaker

- An introductory discussion will take place the first week of classes. This practice discussion is worth up to 10 points.

Earth Week Assignment

- We will attend an Earth Week talk and you will prepare a report on it. Full instructions will be distributed separately. This assignment is worth up to 30 points.

Final Assessment

- A final assessment will be due by the Final Exam Period.

Course Evaluation

- I value your feedback. When you complete the course evaluation and upload the "Certificate of Completion" on the correct Canvas assignments page, you earn 10 points.

How are final course grades determined?

- Students must complete all course requirements within the quarter in which the student enrolled before a final course grade will be issued. You can figure out your standing in class at any point in the quarter by accessing your grade book on CANVAS.
- "Official grades are available about 1 week after the quarter ends. Several ways to obtain your grades are:
 1. BC website: www.bellevuecollege.edu
 2. Kiosk in the Student Services Building or the Campus Information Center
 3. Mail: leave a self-addressed stamped envelope at the Student Service Center, with your Student ID #.
 4. In person at the Student Service Center."

Grading Scale

Grades will be calculated using points. You may earn up to 750 points during the quarter, distributed as follows:

Corresponding Point Value	Course Grade	Decimal Value	Percentage Scale
690-750 points	A	4.0	92-100%
675-689 points	A-	3.7	90-91%
660-674 points	B+	3.3	88-89%
615-659 points	B	3.0	82-87%
600-614 points	B-	2.7	80-81%
585-599 points	C+	2.3	78-79%
487-584 points	C	2.0	65-77%
450-486 points	C-	1.7	60-64%
435-449 points	D+	1.3	58-59%
375-434 points	D	1.0	50%-57%
374 or fewer points	F	0	<50%

FRANK & ERNEST | *Bob Thaves*



On what dates are tests and what materials are covered on each test?

TEST	DATE	MATERIALS COVERED
1	April 11, Wednesday	Chapters 1 & 2; pp. 8-13 Discussion 1 Start Here and Introductory Modules All materials from April 2 – April 11
2	April 25, Wednesday	Chapters 3 & 4 Discussion 2 Earth Week Assignment All materials from April 12 – April 25
3	May 9, Wednesday	Chapters 5, 6, & 7 Discussion 3 All materials from April 26 – May 9
4	May 23, Wednesday	Chapters 8 & 9 Discussion 4 All materials from May 10 – May 23
5	June 11, Monday	Chapters 10, 11, & 12 Discussion 5 All materials from May 24 – June 11
FINAL	June 14, Wednesday 9:30 AM	All Chapters, All Discussions, All Materials

How can you do the best you can in this class?

Since this course is a course on the methods and theories of archaeology, we will be covering a lot of material. To be successful in this course, you will need to regularly attend class and do the assigned readings and assignments on time so that you keep up with learning. Many students find they need to dedicate a good amount of time and energy to pass this course. Please read the following advice since it may help you succeed:

1. Questions or concerns? Contact Dr G immediately.

- Your questions are welcome at any time. Often a problem can be easily resolved if it is addressed immediately. Too often, though, students delay in letting their professors know about a problem until the end of the quarter when it may be too late to resolve.
- Feel free to send Dr G a message or stop by her office (D100E). If the door is closed, please knock.

2. Preparation

- Know what is expected of you! Be aware of class assignments, homework, test dates, discussion dates, etc.
- Come to class well prepared, ready to take notes. You should bring the textbook to every class.
- Do the chapter readings when they are assigned and come to class prepared to discuss them. There will be exercises in class related to the readings. Films may also be assigned, so be sure to keep up on the viewing of this material.
- Some class materials will be posted on-line. You need to check CANVAS a *minimum* of once before each class. Ideally you should check our course site every day.
- Access the free online study materials designed by our textbook publisher.
- For every hour you spend in class, expect to spend at least 3 hours at home studying, reading, or working on this course.

3. Attendance

- To do well in this class it is essential to regularly attend class.
- Always e-mail your professor as soon as possible to let her know if it is unavoidable that you miss class. It is your responsibility to obtain material that you have missed. Make sure there is someone in class from whom you can borrow notes.

4. Team Activities

- It is a good idea to bring your textbook to class since you will be participating in team activities throughout the quarter. These activities will be more productive if your textbook is at hand.

5. Participation

- Participating actively in class will help you learn. Ask questions when you do not understand and join in class or group discussions. Whispering to other students does not count as participation and is a distraction to everyone's learning.

6. Reading

- Reading is an integral component of learning in this course. Remember that any material that is not covered in class is fair game for testing. Do not leave all the reading for the day before the test since there is much material to learn.

7. Comprehension

- If you are not understanding course material, come and see your professor right away. It is difficult to help someone if the professor does not know that the individual wants help. Please set up an appointment during office hours.

What are the Student Behavioral Expectations in this class?

- Your professor's assumption is that each of you is here to learn, so the classroom environment should be as conducive to learning as possible for everyone. Side comments directed to other students during lecture or class discussion are distracting. Once a distracting student comes is identified, he/she will be requested to refrain from talking.
- **If a student persists in distracting the class, that individual will be asked to leave.**
- If a student in class is distracting you, and the professor does not notice, please let her know so the situation can be effectively remedied.
- During class discussions and team exercises, you may find that your fellow students hold beliefs and opinions that are very different from your own. This situation is an opportunity to exercise your listening skills, to perfect your critical reasoning skills, and learn to examine claims based on supporting evidence. The classroom must be safe and open for all students regardless of their age, sexual orientation, race, ethnicity, religion, gender, disability, or perspective.
- We will observe the following guidelines for discussion.
 - 1. We are not here to persuade others to our point of view; rather to examine the merits of each position, based on evidence. We will question the evidence or the claim; not the person.
 - 2. We can respect the person even if we don't share his/her opinions.
 - 3. We will give each participant his/her time to express views without interruption, argumentation, or disrespectful gestures, laughter, body language, facial expressions, etc.
 - 4. We will remain open to corrective feedback as to our views and/or the impact of our communication style.
 - 5. We will remain aware of the time and seek to not dominate the discussion. A general rule of thumb is no more than two comments/questions before yielding the time to others.
 - 6. We will avoid phrases such as: "People like that..." "That's a stupid question....idea....etc." "They always..."
 - 7. No one should be understood to be 'representing' the racial/ethnic, gender, class, etc. group to which he or she ascribes. You speak for only yourself.

What are the class expectations?

- **Social Science Division Guidelines and Procedures**
 - If you have any questions about the meaning of these policies, please ask. You are responsible for reading the guidelines and procedures of the Social Science Division which are given at the end of this syllabus, and which apply to ALL students.
- **Do not submit assignments via e-mail, except by prior arrangement.**
 - Assignments submitted by e-mail will **not** be accepted, except by prior arrangement. It is challenging to keep track of assignments if they are submitted in different ways by different students at different times from various classes.
 - If you must miss class on a day when an assignment is due, you can post it early on our CANVAS course site. Late assignments are not accepted.
- **Make-up Tests**
 - If you are requesting a make-up test or discussion, because you know in *advance* that you will have to be absent on the day of the assessment for a legitimate reason, you will need to write a note or e-mail *ahead of time* explaining why you need to miss the assessment, and you will be required to provide *appropriate legitimate* documentation to explain your absence. Examples are surgery, jury duty, court appearance.
 - Technical issues with your own devices, a flat tire, forgetting the deadline, vacation, attendance at social activities, moving, being really busy, sleeping in, picking up someone from the airport, work, etc. are not valid excuses for missing tests and/or discussions and you will not be able to make up assessments for those reasons.
 - Consideration for make-ups is provided **ONLY** if you have contacted your professor **BEFORE** your absence and you have provided legitimate documentation. There is no guarantee that your situation warrants a make-up assignment or test.
 - A make-up test is composed of several essay questions and must be taken on campus as soon as possible after the test was given in class. No notes, textbook, or other materials/resources are allowed as the make-up test is closed book.
- **Last-minute emergency on test days**
 - If you are extremely sick on the day of a test, you must contact your professor as soon as possible. If you wait until after the test or when you are back in class to explain your absence or ask to make-up work, your request will not be accommodated, regardless of your excuse.

- Any other kind of emergency request will be dealt with on a case-by-case basis. It is always important to contact your professor as soon as possible. To request an accommodation, you will need to write a letter stating why you were unable to attend class, evidence to support your claim, and an explanation of why you think your request should be honored (see above section). As difficult as it may be if your family unfortunately experiences a death, it will be necessary to provide appropriate documentation.
- **Exploring Archaeology**
 - Several in-class exercises form a critical component of your learning in this class. Such assignments are completed in class and there are no make-ups for these assignments.
 - It is necessary that you are prepared for class every day since the in-class exercises are unscheduled and you must have read pertinent material for the day.
- **Technology in the classroom**
 - Please turn off cell phones, pagers, computers, laptops, tablets, nooks, etc. before class begins, as these items distract you and other students from learning.
 - If you have a documented need to use a laptop or another electronic device, please let your professor know so you can be properly accommodated. If you do not have a documented reason, please do not ask to use electronic technology in the classroom.
- **Syllabus Review & Course Agreement Form**
 - You are required to review this syllabus and the attached Social Science Division Procedures and Guidelines. Enrollment in the course constitutes an agreement to abide by the procedures and guidelines in these items. Submit the Course Agreement Form to CANVAS as soon as possible. It is due by Wednesday, April 4.

How can you avoid plagiarism?

The Writing Lab website has excellent information about how to avoid plagiarism and how to correctly cite the work of others:

<http://s.bellevuecollege.edu/wp/sites/161/2014/09/avoidingplagiarism.pdf>

Preventing Plagiarism: “Plagiarism is a form of academic dishonesty occurring when students use information or material from outside sources and do not properly cite those sources. This use is grounds for disciplinary action. It is your responsibility to understand plagiarism and its consequences.

Plagiarism occurs if:

- a. You do not cite quotations and/or attribute borrowed ideas.
- b. You fail to enclose borrowed language in quotation marks.
- c. You do not write summaries and paraphrases in your own words and/or do not document your sources.
- d. You turn in work created by another person.
- e. You submit/use your own prior work from a current or past course, or work from one current course in another course *without express permission* from your professors. This use also constitutes academic honesty.
- f. Consequences: If it is determined that you have plagiarized or engaged in other forms of academic dishonesty, you will likely fail the assignment and possibly the course, despite points earned through other work. Acts of academic dishonesty are reviewed for disciplinary action."

What is the college's Student Code?

- "Cheating, stealing and plagiarizing (using the ideas or words of another as one's own without crediting the source) and inappropriate/disruptive classroom behavior are violations of the Student Code of Conduct at Bellevue College. Examples of unacceptable behavior include but are not limited to: talking out of turn, arriving late or leaving early without a valid reason, allowing cell phones/pagers to ring, and inappropriate behavior toward the professor or classmates.
- The professor can refer any violation of the Student Code of Conduct to the Vice President of Student Services for possible probation or suspension from Bellevue College. Specific student rights, responsibilities and appeal procedures are listed in the Student Code of Conduct, available in the office of the Vice President of Student Services."
- The Student Code: http://bellevuecollege.edu/policies/2/2050_Student_Code.asp

PROCEDURES AND GUIDELINES OF THE SOCIAL SCIENCE DIVISION

Spring 2018

<http://www.bellevuecollege.edu/socsci/procedures-guidelines/>

Cheating, Stealing and Plagiarizing [1]

Cheating, stealing and plagiarizing (using the ideas or words of another as one's own without crediting the source) and inappropriate/disruptive classroom behavior are violations of the Student Code of Conduct at Bellevue College. Examples of unacceptable behavior include but are not limited to: talking out of turn, arriving late or leaving early without a valid reason, allowing cell phones/pagers to ring, and inappropriate behavior toward the instructor or classmates. The instructor can refer any violation of the Student Code of Conduct to the Dean of Student Services for possible probation or suspension from Bellevue College. Specific student rights, responsibilities and appeal procedures are listed in the Student Code of Conduct, available in the office of the Dean of Student Services.

Incomplete

If a student fails to complete all the required work for a course, an instructor may assign the grade of Incomplete ("I"). The student must complete the coursework by the end of the next quarter or receive the assigned letter grade (usually an "F").

F Grade

Students who fail a course will receive a letter grade of "F."

Final Examination Schedule

The Social Science Division will adhere to the final examination schedule as stated in the BC Schedule. Final examinations will be held at the end of each quarter at fixed times. Instructors will not give examinations in advance of the regular schedule. A student who is absent from any examination held at any time during the quarter may forfeit the right to make up the examination. If, for illness or some other circumstance beyond the student's control, the

student is unable to be present at any scheduled examination and has contacted the instructor on a timely basis, the student may be permitted to take such examination at a time designated by the instructor.

Withdrawal from Class

College policy states that students must formally withdraw from a class by the end of the seventh week of the quarter (Registration Office, B125). If a student has not withdrawn by that date, an appropriate letter grade will be assigned for the course.

Hardship Withdrawal

Instructors may assign the grade of “HW” (hardship withdrawal) at their discretion in the event that a student cannot complete the coursework due to extreme and exceptional circumstances. Students may also contact the Enrollment Services office BEFORE grades are assigned in cases of hardship.

Students Who Require Disability Accommodations

Students with disabilities who have accommodation needs are encouraged to meet with the Disability Resource Center (DRC) office located in B132 (telephone 425.564.2498 or TTY 425.564.4110), to establish their eligibility for accommodation. The DRC office will provide each eligible student with an accommodation letter. Students who require accommodation in class should review the DRC accommodation letter with each instructor during the first week of the quarter.

Students with mobility challenges who may need assistance in case of an emergency situation or evacuation should register with Disability Resource Center, and review those needs with the instructor as well.

Distribution of Grades

Grades will not be posted in the Social Science Division or in faculty offices, and secretaries will not give out grades. Students should access their grades through the BC Web site.

Return of Papers and Tests

Paper and/or Scantron score sheet returns will be arranged in the following ways ONLY: by mail, if student supplies the instructor with stamped, self-addressed envelope (with appropriate postage); or by the instructor designating a time and place whereby the student may retrieve his/her papers. Unclaimed papers and/or Scantron score sheets must be kept by the instructor for a minimum of sixty (60) instructional days following the end of the quarter.

[1] If you are accused of cheating, stealing exams and/or plagiarism, there is a Bellevue College Student Discipline and Appeals Procedure (the right to due process) which you may pursue. Contact the office of Division Chair (D110), the Dean of Student Services (B231A) or the Associated Student Body (C212) for information regarding the appeals process.

COURSE SCHEDULE* - ANTH& 204 - BELLEVUE COLLEGE - SPRING 2018			
WEEK	MONDAY	Tues	WEDNESDAY
1	April 2 Welcome to class! Archaeology as Anthropology	3	April 4 Introduction & Searchers READ for Today: Pages 8 - 13 and Chapter 1 DUE: Course Form; Ice-Breaker DUE: Discussion 1 post
2	April 9 What is Left? READ for Today: Chapter 2 DUE: Discussion 1 replies	10	April 11 TEST #1
3	April 16 Where? READ for Today: Chapter 3	17	April 18 When? READ for Today: Chapter 4 Class: 10:30 am-11:20 pm Earth Week Event 11:30-12:20 DUE: Discussion 2 post
4	April 23 Chapter 4 Continued DUE: Earth Week Assignment DUE: Discussion 2 replies	24	April 25 TEST #2
5	April 30 Organization of Societies READ for Today: Chapter 5	May 1	May 2 Environment & Food READ for Today: Chapter 6 DUE: Discussion 3 post
6	May 7 Artifacts READ for Today: Chapter 7 DUE: Discussion 3 replies	8	May 9 TEST #3
7	May 14 Bioarchaeology READ for Today: Chapter 8	15	May 16 Chapter 8 continued <i>Last Day to Withdraw is May 20</i> DUE: Discussion 4 post
8	21 Cognitive Archaeology READ for Today: Chapter 9 DUE: Discussion 4 replies	22	May 23 TEST #4
9	May 28 MEMORIAL DAY NO CLASSES	29	30 Explanation in Archaeology READ for Today: Chapter 10 DUE: Discussion 5 post
10	June 4 Whose Past? READ for Today: Chapter 11 DUE: Discussion 5 replies	5	June 6 Future of the Past READ for Today: Chapter 12 DUE: Course Evaluation
FINAL	June 11 TEST #5	12	June 13 Final Assessment 9:30 am - 11:20 am

*Course Schedule subject to change as circumstances dictate. It is the student's responsibility to check our Canvas course site or inquire about changes.