



BELLEVUE
COLLEGE

Diagnostic Ultrasound Technology Program

3000 Landerholm Circle SE
Bellevue, WA 98007-6484
(425) 564-1000

[We are an equal opportunity institution](#)



BELLEVUE
COLLEGE

Diagnostic Ultrasound Technology Program

Section I Program Overview

Program Information
Application Details
Available online
www.bellevuecollege.edu/ultrasound

Terry Hatcher, M.Ed., RDMS
Program Chair
Terry.Hatcher@bellevuecollege.edu

Bellevue Community College does not discriminate on the
basis of age, gender, sexual orientation or ethnic
background.

Program Accreditation

Joint Review Committee –Diagnostic Medical Sonography / CAAHEP

Cardiac, General and Vascular Concentrations

www.jrcdms.org

www.caahep.org

- 2 Year - Associate of Arts Degree (112 cr)
- Full Time - 13-19 credits per quarter
- New Class Begins Each Fall Quarter
- Graduation end of Summer quarter – 2nd year



Program Overview

- Program entry is by selective admission.
- Applicants must complete prerequisite courses by the end of winter quarter of the year they apply for entrance.
 - ie: to be considered for acceptance in fall of 2018, you must complete all required prerequisite courses by the end of winter quarter, 2018.

Selective Admission Program

- Approximately 30 students admitted annually.
- Typically 100-120 applicants each year.
- Selection committee reviews applicants.
- Selection made and applications notified in May or early June.



Program Overview

- FULL TIME 13-19 credits per quarter
- 8 consecutive quarters ~ 2 Year program
- New class begins each Fall quarter
- Associate in Arts Degree
- 7 Required Prerequisite courses
- ARDMS Credentialing Exams - qualified upon graduation
 - www.ardms.org, www.arrt.org
- 3 Specialties: General, Vascular & Adult Echo offered.
- Applicants must select specialty prior to submitting application.

Key Program Outcome

- Prepare graduates to become credentialed through national examination and for entry level positions as either a general sonographer, vascular technologist or adult echocardiographer.

Clinical Concentrations Offered

General Sonography

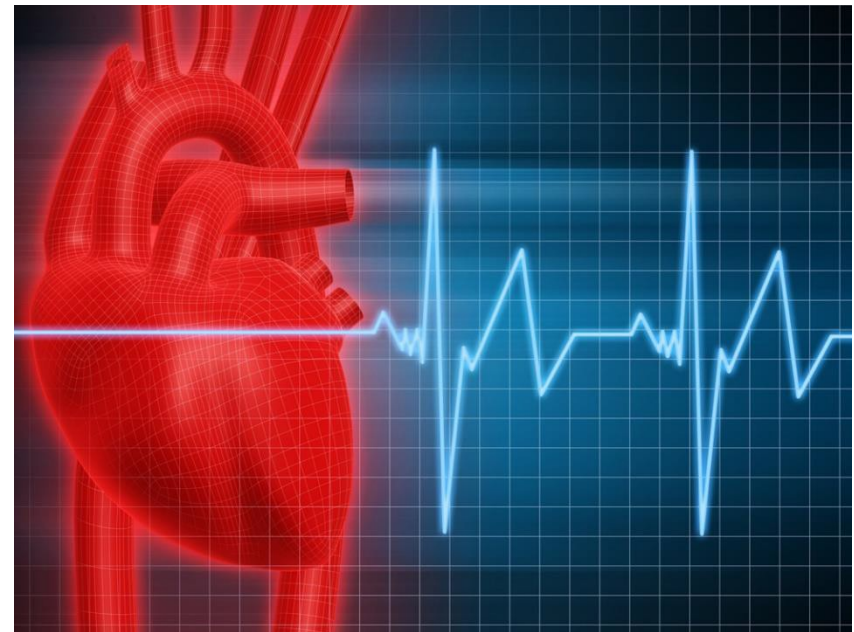
- Abdomen
- Gynecology
- Obstetrics
- Superficial Structures
 - Breast
 - Thyroid
 - Testicles



Clinical Concentrations Offered

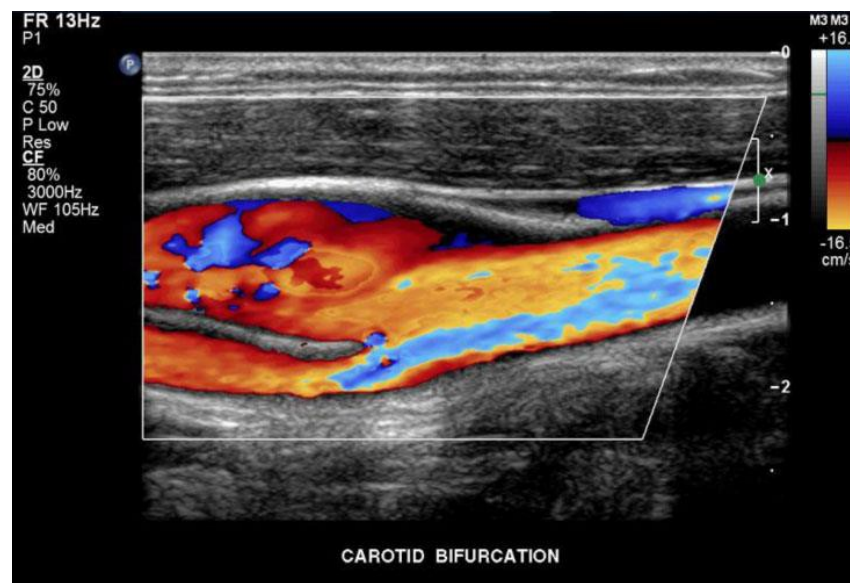
Cardiac Sonography

- Adult Echocardiography
- Pediatric Echocardiography is available



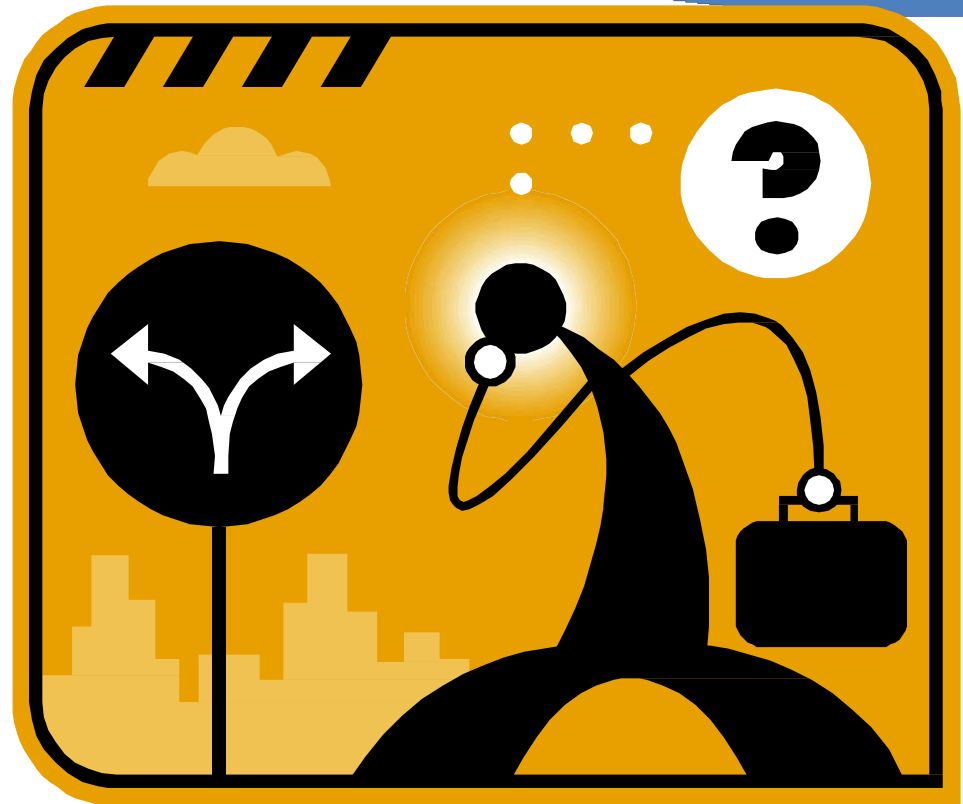
Clinical Concentrations Offered

- Vascular Technology
 - Carotid studies
 - Transcranial Doppler
 - Extremity work to search for peripheral vascular disease.
 - Doppler exams of the kidneys, liver and other organs.



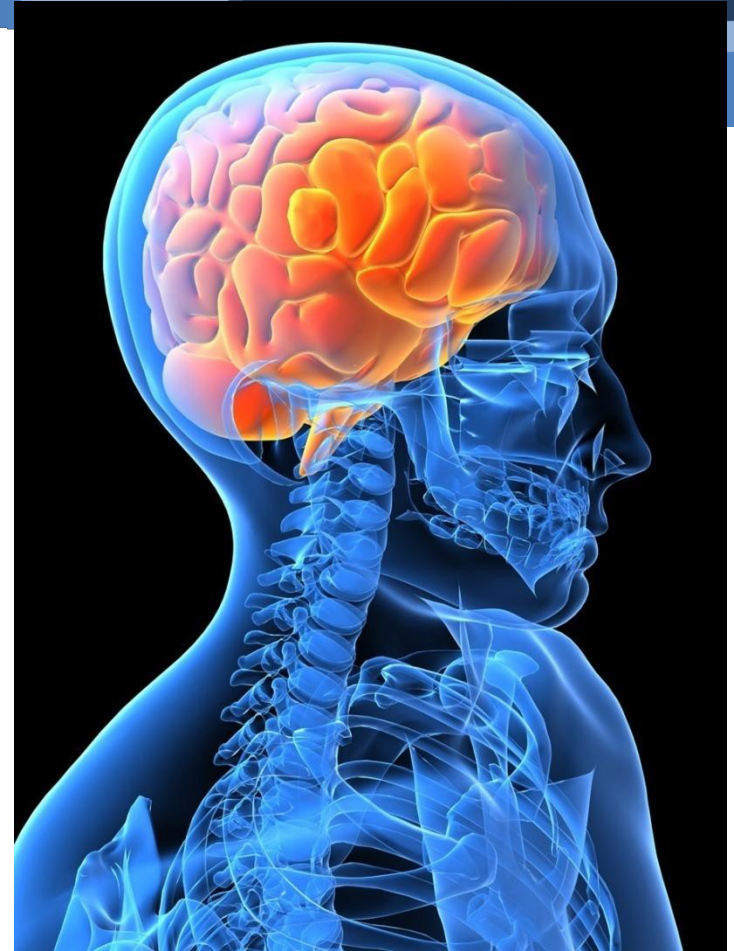
Clinical Concentration - Selection

- Students choose **prior** to applying to the program
- Abdomen/OB-GYN
- Vascular Technology
- Adult Echo
- Internship will be in the specialty concentration



Other Clinical Concentrations

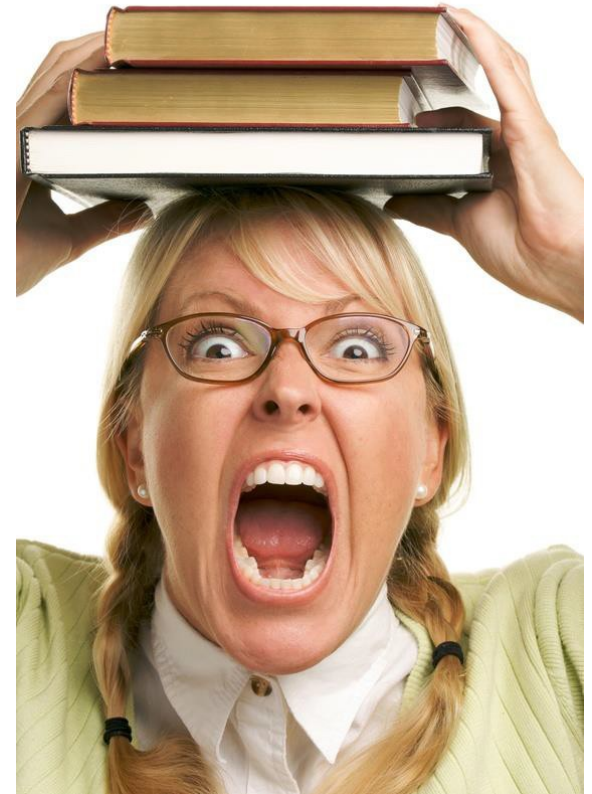
- Bellevue College accredited for General, Adult Echo & Vascular Technology.
- Other specialty credentials can be pursued after graduation as a practicing sonographer
- www.ardms.org



PROGRAM HIGHLIGHTS

1ST YEAR

- 1st year FULL TIME classes & labs on campus
- Scan lab with live scan models
- College calendar for breaks & holidays
- Classes meet at different times days, evenings and any day M-F



FALL Quarter	Winter Quarter	Spring Quarter	Summer Quarter
DUTEC 100 3cr Intro to DMS	DUTEC 106 3cr Pathophysiology II	DUTEC 112 3cr Pathophysiology III	DUTEC 102 3cr Patient Care
DUTEC 105 3cr Pathophysiology I	DUTEC 110 5cr Abdominal Sonography	DUTEC 120 5cr OB GYN	DUTEC 113 3cr Pathophysiology IV
DUTEC 107 7cr Sectional Anatomy	DUTEC 135 3cr Equipment /Scanning I	DUTEC 125 3cr Congenital Heart Defects	DUTEC 165 3cr Equipment /Scanning III
DUTEC 130 3cr Small Parts	DUTEC 155 5cr Echocardiography	DUTEC 145 4cr Equipment /Scanning II	DUTEC 180 3cr Advanced OB GYN
DUTEC 150 Basic Echocardiography 4cr	DUTEC 171 3cr Physics II	DUTEC 160 3cr Vascular Technology	DUTEC 182 3cr Advanced Vascular
DUTEC 170 3cr Physics I		DUTEC 181 3cr Advanced Echo	DUTEC 190 3cr Pediatric Echo
		DUTEC 200 3cr EKG	
Second Year Clinical Internship I 13cr	Second Year Clinical Internship II 13cr	Second Year Clinical Internship III 13cr	Second Year Clinical Internship IV 13cr
Class schedules determined by program chair, and may change without notice. 10/7/2016			

PROGRAM HIGHLIGHTS

2nd YEAR

- 2nd year-Internship
- 36-40 hours per week
- INTERNSHIP sites may be assigned in distant locations from your residence.
- Students may need to commute a long distance or relocate



10/7/2016

Clinical Internship Sites

- > 50% of internship sites in greater Seattle area
- Students may be expected to drive up to 2 hours each way to site, or move to the clinical site location.
- Students typically are assigned to one site for first six months, different site for second six months
- Students are assigned to sites based on multiple factors (sites available, specialty chosen, learning environment, etc.)
- Initial site assignment announced end of first year, summer quarter

General Program Requirements

(after an applicant is accepted in to the program)

- CPR/First Aid – Health Care Provider Level (required)
- HIV/Aids class (7 hrs)
- National/Federal Background Check – After Accepted to program & each year in program
- Immunization Tracker – Upload Immunization Records, Hepatitis B Vaccination, TB, etc.
- Access to and use of MS Word, Excel and PowerPoint
- Computer with High Speed Internet Connection
- Printer / FAX / Scanner device for clinical documentation into .pdf's
- Transportation to college and clinical internship site.

COSTS OF BC PROGRAM

tuition may change, visit
www.bellevuecollege.edu for most current

- Tuition, technology fees, and some courses have lab fees. See college registration website for updated tuition and fee rates.
- Books = approximately \$2000 total (\$1000 at beginning of 1st quarter)
- Miscellaneous (lab coats, liability insurance) \$150
- Professional organization student membership fees \$45 - \$125
- ARDMS Physics Exam approx \$250/end of first year
- Lab Fees (approx \$750.00)
- Potential costs related to relocation or commuting to campus or second year clinical internship site.
- Certified Background/Immunization Tracker (\$113)
- Trajecsys (coming in the future) \$150.00



Tuition – Residency Status and Out of State Tuition

- For details on out of state tuition rates and regulations, please contact:

Residency Office at (435) 564-4143

- OR visit:

<https://www.bellevuecollege.edu/residency/>

Financial Aid

Many financial aid, grants and scholarships are available through the Financial Aid office.

Visit:

<http://bellevuecollege.edu/enrollment/financial/>
for more info.

