



**BCC**  
Bellevue Community College

# 2006 Annual Report



Bellevue  
Community  
College



***Become Exceptional***

Bellevue  
Community  
College  
Foundation

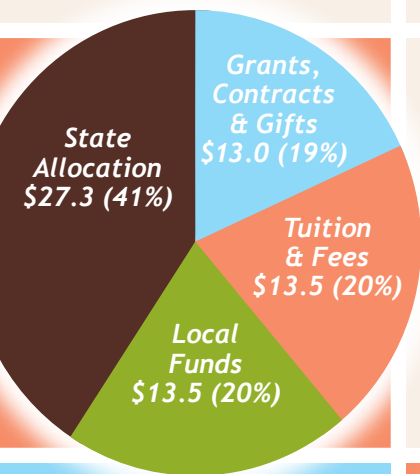


# 2005-06: A Year of Exceptional Achievement

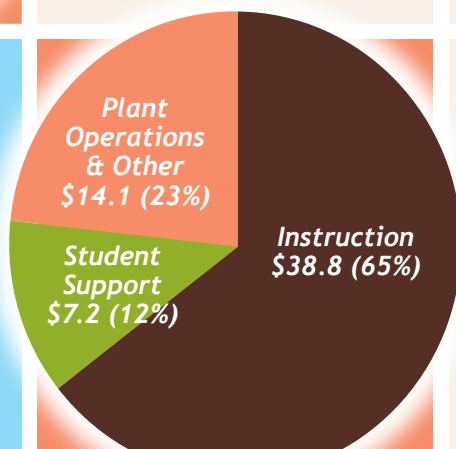


- **BCC's first bachelor's degree**, a Bachelor of Applied Science in Radiation and Imaging Sciences, received approval from two state agencies to begin in Fall 2007.
- **We became the first in the nation** to offer a college degree program - Venture - for developmentally delayed students.
- **Noting our commitment to excellence and the quality of our faculty and staff**, the Northwest Commission on Colleges and Universities reaffirmed BCC's ten-year accreditation.
- **BCC was named one of the "Nation's Leading Colleges and Universities Committed to Diversity"** by the national educational organization, Minority Access, Inc.

- **Our Interior Design program gained a stamp of approval from the most respected authority in its field**, becoming only the third associate-degree program in the nation to be accredited by the Council for Interior Design Accreditation.
- **The national Charles Kennedy Equity Award for commitment to fair treatment for minorities and women** was awarded to BCC by the Association of Community College Trustees.
- **Citing "a pattern of excellence,"** the American Association of University Administrators conferred its national Exemplary Models of Administrative Leadership award on BCC.
- **The Kennedy Center selected our students' fall stage production** for performance at their College Theatre Festival, ranking it among the best college and university productions in seven states.
- **The global jazz community's largest annual gathering enjoyed our Jazz Band and Celebration! vocal jazz ensemble** when they performed at the International Association of Jazz Educators national conference, a prestigious and highly selective event.
- **For the second time in three years, Celebration! won first place** among college vocal jazz ensembles at the Lionel Hampton Jazz Festival.
- **BCC math students placed seventh in the nation** in the American Mathematical Association competition.



**Operating Revenues**  
(\$ in millions)  
Total: \$67.3



**Operating Expenses**  
(\$ in millions)  
Total: \$60.1

## Sources and Uses of Funds

*For more information on these and other achievements, please click on the "News & Events" link on BCC's home page, at [www.bellevuecollege.edu](http://www.bellevuecollege.edu).*



Jean Floten

*“At Bellevue Community College we have issued a challenge to our students and staff: Become Exceptional! Dare to achieve beyond the norm. Exceed your own and others’ expectations.”*

~ Jean Floten, BCC President

## *To our community of friends:*

At Bellevue Community College we have issued a challenge to our students and staff: Become Exceptional! Dare to achieve beyond the norm. Exceed your own and others’ expectations.

Whether that means being accepted, after two years with us, to top universities such as Oxford, Harvard, Yale, Columbia, Stanford or one of Washington state’s universities, or making major strides in your career after learning new professional skills here, or surmounting the long odds that prevent many low-income youth from completing high school and attending college – BCC helps students transcend perceived limitations, expand their abilities and attain their full potential.

But state funding can’t keep up with our high expectations or those of the Eastside community. It is only with support from you – our donors, volunteers and friends in the community – that we are able to provide the exceptional learning opportunities created by access to sophisticated equipment (including an electron microscope and a high-tech planetarium), to domestic and international internships and to literally scores of clubs and activities that build leadership and teamwork skills while inspiring community service.

In Fall 2007 we plan to add another such opportunity, a bachelor’s degree in radiation and imaging sciences. Graduates of this program – one of four applied science degrees being piloted at selected Washington community colleges – will be the only professionals in the state to be formally cross-trained in multiple imaging techniques and in radiation and imaging clinic management.

The payoff from the generous support of donors, volunteers and friends is evident in the breadth and quality of our programs, the student success stories on the following pages and the recent achievements of the college noted on the opposite page.

Your contributions to BCC are having a clear and substantial impact. Thank you for all you do for our students and for Bellevue Community College.

Sincerely,

*B. Jean Floten*

Jean Floten  
President  
Bellevue Community College

## Board of Trustees

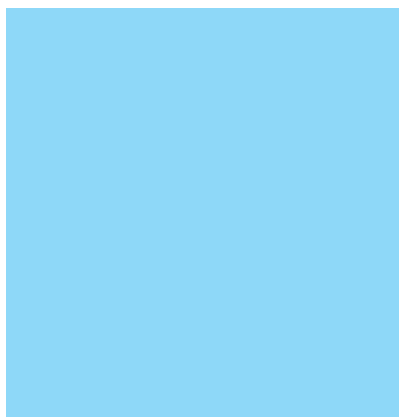
*Ruthann Kurose, Chairman  
Paul Chiles, Vice Chairman  
Lee Kraft  
Steve Miller  
Vijay Vashee*



# Become Exceptional



For more than 40 years innovation, forward thinking and great minds at BCC have **prepared students to consider the next thing, not just do the current thing.** We demand **rigor and excellence from instructors and students alike,** and it breeds success.



**Our graduates are critical thinkers,** ready to succeed in changing environments and adapt to emerging technologies.

*“The education offered by BCC is an excellent foundation for its students. It creates the citizens and workforce we need in a constantly changing world.”*

~ Gary Pruitt  
Chief Executive Officer  
Univar



# Developing Exceptional Character

*At graduation Sean Howe described his exceptional personal growth as a student at BCC:*

"Honestly, I never thought I would go to college. Being the first of my siblings to try it, I was not sure I even belonged in academic circles.

"But BCC showed me my potential. Teachers like Dr. Helen Taylor taught me how to be a good student. They taught me to be informed, involved and aware of my world. I have been volunteering for a good portion of the time that I have been at BCC. This is something I never thought of doing prior to coming here.

"When you set all of the knowledge I have gained aside, there are still a mountain of qualities I have gained here. I have not only learned to be a good student but also a good person, to be active in my community, to give without expecting anything in return, to share my knowledge and creativity with the rest of the world, and to embrace people as individuals with a common goal.

**"My degree will not just be an associate in psychology, but a degree in life and humanity.**

**"That is what I have gained from being a student at BCC."**

***"[At BCC] I have not only learned to be a good student but also a good person, to be active in my community, to give without expecting anything in return, to share my knowledge and creativity with the rest of the world, and to embrace people as individuals with a common goal."***

~ Sean Howe



Sean Howe at Western Washington University, where he is completing a bachelor's degree in psychology.



# Acquiring Exceptional Skills



*Despite two decades' laboratory experience in the biotech industry, Paul Hara needed something extra to stand out from his peers and advance professionally. He found it at BCC:*

...a certificate in Project Management through our Continuing Education professional development program.

**One year later, having completed the 150-hour Project Management curriculum, Paul got his promotion. Not only that, an executive vice president at his firm wrote us an enthusiastic, three-page letter of appreciation based on Paul's new skills.**

"Paul's participation in the course has clearly strengthened his ability to analyze individual projects..." the letter said. "This ability to integrate the total project has taken Paul to the next level of project management expertise...."

The power of Paul's BCC certificate paid off again handsomely when, after he lost his position in a major reduction in force at his company, it gave him an advantage in the applicant pool as he reviewed his options for new employment.

"More than one employer told me my résumé rose to the top of the pile because it had that project management credential from BCC," he said.

Paul chose to work for MDS Pharma Services and again, thanks to the skills he developed with us, was promoted — this time to director of program management for the Development and Regulatory Services group.



Paul Hara



*"More than one employer told me my resume rose to the top of the pile because it had that project management credential from BCC."*

~ Paul Hara

# Determined to be the exception – and she is!



Mona Peterson

***Mona Peterson came to BCC determined to beat the odds – to become one of the few children of migrant farm workers to complete high school.***

Mona's life nose-dived when, in her 40's and with no high school diploma, she lost her job to someone with more education.

"I was devastated," she told her classmates in a speech at graduation. "I couldn't leave my house for a week because I felt like I wasn't as good as everyone else. But I knew I had to get up, dust myself off and keep on going. AND I DID. I decided to go to BCC to get my GED."

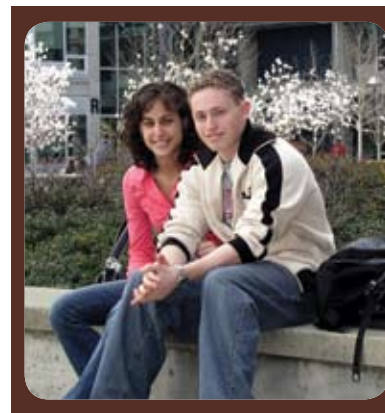
With BCC's help, Mona earned a General Education Development certificate (GED, a high school diploma-equivalent). She also took classes in the Certified Payroll Professional program offered by our Continuing Education division. And when she completed her courses Mona found a new and even better job with a worldwide digital media company.

Mona could scarcely contain her excitement when she concluded her graduation speech:

"I knew I could do better," she said. "I promised myself that someday, somehow, somewhere I would be able to say, 'I am a high school graduate,' AND TONIGHT, I DID."

***"I promised myself that someday, somehow, somewhere I would be able to say, 'I am a high school graduate,' AND TONIGHT, I DID!"***

- Mona Peterson



# The Bellevue Community College Foundation

*The mission of the Bellevue Community College Foundation is to raise funds to support quality education and learning opportunities for all BCC students.*

## Expanding Opportunities to Become Exceptional

Thanks to the generous support of our donors and volunteers, in 2005-06 the Bellevue Community College Foundation made a difference at BCC:

- **Awarded \$105,000 in scholarships to 118 students**, enabling them to stay in school.
- **Secured new planned gifts, bringing to \$4.2 million** the total of planned gifts designated to the BCC Foundation (see related story on page 8).
- **Raised 18 percent more in gifts at our annual luncheon** compared to last year.
- **Awarded a total of \$21,000 in Mini-Grants** to fund 12 faculty and staff projects that improve instruction and enhance service to students.
  - **Funded an in-depth, two-day "Beyond Diversity" training workshop** to support the college's commitment to diversity and pluralism.
  - **Funded cultural and civic-education programs such as the Hands-On Democracy lecture series** offered through BCC's Center for Liberal Arts.
  - **Honored five BCC faculty and staff for excellence** in their work:
    - Disability Support Services Program Coordinator Dimitri Azadi
    - Chemistry Instructor Jack Surendranath
    - Biology Instructor Rosemary Richardson
    - English-as-a-Second-Language Instructor Judy Roberts
    - Physics Instructor Robert Hobbs
    - Research Analyst Cora Nixon

**Assets**  
*(at 6/30/06)*

Marketable securities:  
\$3,719,529

Cash and equivalents:  
\$297,350

Pledges receivable:  
\$403,302

**Total assets:**  
\$4,420,182



*Jack Surendranath on learning he had won a BCC Foundation Margin of Excellence Award.*



## Help BCC students Become Exceptional.

*Use the attached envelope to make your gift to the BCC Foundation today. Or make your gift online at [www.bcc.ctc.edu/secure/foundation/](http://www.bcc.ctc.edu/secure/foundation/).*



Carol Taylor



*“Our impact on BCC students and programs keeps growing as the community embraces the college in expanding numbers. For that momentum we thank all of you – our donors, our volunteers and our community advocates.”*

~ Carol Taylor, BCC Foundation Board of Directors President

## Dear Friends of BCC:

Because of you, our donors and advocates in the community, opportunities for BCC students to Become Exceptional multiplied this year.

For example, donor-funded scholarships kept the doors to BCC’s life-changing programs open for 118 students. Two of those students – Lynn Frair and Elisa Jacobs – spoke in person at our annual luncheon to offer their heartfelt thanks. Without our donors’ generosity, both said, higher education would for them be an impossible dream. (Please see the story on page 9.)

Like all of our scholarship recipients, Lynn and Elisa are impressive students who we are confident will repay our donors’ investment in them by making valuable contributions to society. And that is what is so rewarding about giving to the BCC Foundation. Your contributions today pay big returns tomorrow.

### What other investment can you make that:

- helps people not need your support in the future
- translates so directly into better jobs, a better regional economy and better lives
- supports the Eastside’s claim to having one of the top community colleges in the nation
- provides such satisfaction in knowing you have helped someone find in themselves ways to become exceptional

In addition to aiding students individually the Foundation added to the quality of BCC’s programs in several ways. Please refer to the opposite page for a list of our primary contributions.

Our impact on BCC students and programs keeps growing as the community embraces the college in expanding numbers. For that momentum we thank all of you - our donors, our volunteers and our community advocates. You are making it possible for the Foundation to expand BCC’s life-changing opportunities for students to Become Exceptional. Thank you for all you do to support the BCC Foundation and Bellevue Community College.

Sincerely,

Carol Taylor  
President, Board of Directors  
Bellevue Community College Foundation



*Student Lynn Frair tells BCC Foundation donors the amazing impact their scholarship support has had on her life. (See story on page 9.)*



# An Exceptional Way to Give

*“It could be called ‘two-way giving,’ because it helps the donor as well as Bellevue Community College...”*

...says Bob Cunnison, an emeritus member of the BCC Foundation Board of Directors. Bob is volunteering his time currently to tell others about the unusual advantages of planned giving, or gifts of estate assets.

“A planned gift can be set up so it not only supports life-changing opportunities for generations of BCC students, but also may provide additional retirement income for the donor or loved ones, or for the grandkids’ education,” Bob says.

Bob believes in leading by example, so it is no surprise that he and his wife Jean have made their own multi-million dollar planned gift to the BCC Foundation, to establish an endowment that will fund five annual scholarships for BCC students who plan to go on for bachelor’s degrees.

**Bob’s and Jean’s example and his outreach to potential donors have indeed led others to make their own planned gifts. Recent commitments total more than \$4 million.**

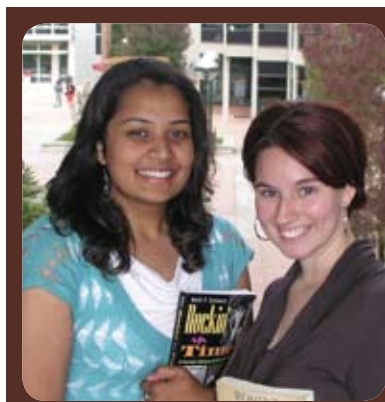


Jean and Bob Cunnison

*“A planned gift can be set up so it not only supports life-changing opportunities for generations of BCC students but also provides additional retirement income for the donor or loved ones, or for the grandkids’ education.”*

~ Bob Cunnison  
BCC Foundation volunteer

“I can’t say enough about the importance of planned gifts like Bob’s and Jean’s,” says Jean Floten, BCC President. “These are truly gifts that keep on giving and that help our students to Become Exceptional.”



**To learn more about the mutual advantages of planned giving, contact the BCC Foundation at (425) 564-2386 or [foundation@bcc.ctc.edu](mailto:foundation@bcc.ctc.edu).**

# Exceptional help for an exceptional student



Lynn Frair

***BCC Foundation scholarship recipient Lynn Frair told donors at our annual luncheon how their gifts changed her life, and how she will return their generosity by helping others.***

"My first year in the BCC nursing program was very difficult. My mom was in the hospital for four months, in the ICU. And I was exhausted. I was working full-time while also going to college and supporting my mom.

"Our nursing advisors recommend that we work no more than 15 hours a week while we're in school, but there were weeks when I worked 70 hours to help pay for everything. I really needed help.

"Then I heard that the BCC Foundation awards scholarships, and I applied.

***"There were weeks when I worked 70 hours to help pay for everything. I really needed help. When I got the letter from the Foundation saying they had given me a scholarship..., I actually fell to my knees!"***

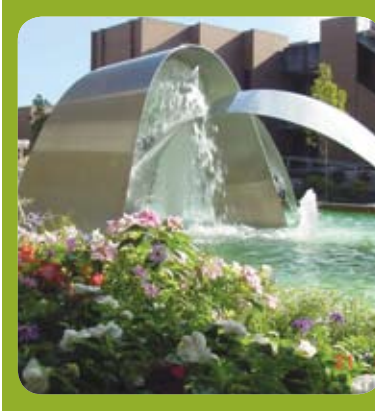
- BCC Foundation scholarship recipient Lynn Frair, now a Critical Care Unit nurse at Evergreen Hospital.

"When I got the letter from the Foundation saying they had given me a scholarship for all three quarters of this year, I actually fell to my knees!

"There are many people here at the Luncheon today who gave last year to help me and many students like me stay in school, and **it's only because of you that I am able to pursue a degree in nursing and help other people in return. I promise you all I will do my best to pay you back by being an exceptional nurse.**"



# Bellevue Community College Foundation Board of Directors



## Officers

**Carol Taylor**, Board President  
Group Health Cooperative

**Mike Humphries**, President-Elect and  
Chair of Marketing Task Force  
Waldron & Company

**Darren Brady**, Treasurer and Chair  
of Finance Committee,  
Puget Sound Energy

**Dennis Shay**, Board Secretary  
Brown & Shay Partners

**Rob McKenna**, Chair of Directors Committee  
Washington State Attorney General

**Peter Adler**, Chair of Development  
and Strategic Planning Committee  
PeaceHealth

**Don Grant**, Past President and  
Chair of Emeritus Committee  
Wells Fargo Bank

## Board Members

**Shiv Batra**  
INCA Engineers, Inc.

**Martin Bentrott**  
The Boeing Company

**Jeffrey Christianson**  
Attorney

**Courtney Courter**  
Honda Auto Center  
of Bellevue

**Crystal Hochhaus**  
QC Graphics

**Michael Kalian**  
Seattle Home Show

**Dale King**  
GLY Construction

**Barrie Macdonald**  
Community Volunteer

**Dave Mentz**  
Medtronic Physio-Control

**Robin Nelson**  
Community Volunteer

**Dan Olson**  
Bank of America

**Gary Pruitt**  
Univar

**Stan Rosen**  
Rosen-Harbottle  
Commercial Real Estate

**Kass Sells**  
DraftFCB Seattle

**Lisa Sims**  
Community Volunteer

**Kathleen Steele**  
AXA Advisors

## Members Emeritus

**Lynn Bain**  
Key Private Bank and  
McDonald Financial Group

**Rick Collette**  
First Mutual Bank

**Allen Courter**  
Honda Auto Center  
of Bellevue

**Robert Cunnison**  
Community Volunteer

**Dorothy Graham**  
Consultant/Community  
Volunteer

**Peter Horvitz**  
Community Volunteer

**Neil McReynolds**  
McReynolds Assoc., Inc.

**Toni Richmond Hoffman**  
Coldwell Banker Bain  
and Associates

**Angela Sutter**  
Smith Barney

**Frank Young**  
FNY Associates

*Attorney General  
Rob McKenna at  
the 2006 BCC Foun-  
dation Luncheon.*



*“BCC is a jewel... It has proven itself to be top quality. But that exceptional level of quality requires resources that go above and beyond those made available by the state.”*

~ Rob McKenna  
Attorney General of  
the State of Washington

# 2005-2006 Donors

*Sincere thanks to all our BCC Foundation donors! You are giving our region's residents greater access to affordable, high-quality opportunities to Become Exceptional at Bellevue Community College.*

## **President's Circle (\$10,000+)**

Amgen Foundation  
The Boeing Company  
The Bullitt Foundation  
Judy Bushnell  
Allen & Linda Courter  
James & Sandra Dagnon  
Education Assistance  
Foundation  
Berthe & Stanley Habib  
Humanities Washington  
Michael & Pam Kalian  
King County Office Of  
Financial Management/  
Harborview Medical Center  
Lockwood Foundation  
John & Donna Luger  
Microsoft Corporation  
Robin & David Nelson  
The Norcliff Foundation  
Parent Advisory Committee  
Jerome & Linda Paros  
PeaceHealth  
St. Joseph Medical Center  
John W. Stanton  
Seattle Home Show  
Norman Stromer  
SunTrust/Investor  
Protection Trust  
Swedish Medical Center

United Way of King County  
Univar Foundation  
Vijay & Sita Vashee  
Virginia Mason  
Medical Center  
Washington State Board  
for Community &  
Technical Colleges  
Wells Fargo

## **Visionaries (\$5,000-\$9,999)**

4 Culture  
Bank of America Foundation  
Rick Burnstead  
Costco Wholesale  
Jewish Federation of  
Greater Seattle  
King County Journal  
Newspapers  
Lucky Seven Foundation  
Peter A. Horvitz Foundation/  
Peter & Peggy Horvitz  
PNC Bank  
Preston Gates & Ellis, LLP  
Radiantcare Radiation  
Oncology PLLC  
Rosen Family Foundation  
Stanley & Michele Rosen

Susan G. Komen Breast  
Cancer Foundation  
Tacoma Radiation Center  
Temcov Foundation  
Yakima Valley Memorial  
Hospital

## **Benefactors (\$2,500-\$4,999)**

Alliance Data Systems  
Alltel  
Anonymous  
AXA Foundation  
Base Capital LLC

Angela A. Sutter  
Sweeney Conrad, P.S.  
Terranomics Cross-  
roads Associates  
The Estate of Barbara  
D. Dimock, Karen R.  
Day Representative  
T-Mobile  
Washington State  
Employee's Combined  
Fund Drive  
Wells Fargo Foundation  
Educational Matching  
Gift Program  
Frank & Susan Young

Valerie L. Hodge  
Gary R. Houlahan  
Key Foundation  
KeyBank  
Dale W. King  
Ronald Leatherbarrow  
Donna M. Luger  
Barrie & Starr Macdonald  
Lucy Parke Macneil  
Diane & Roger Mauldin  
Mark McClure  
Medtronic  
Steve S. Miller  
Scott K. Morris  
Susan & Gary Neumann

Courtney & Jason Courter  
Ron Crockett  
Davidson Companies  
Ken & Mary Denman  
Duke Realty Corporation  
Tika Esler  
Estate of Setsuko McDermott  
Global Impact  
Good Chevrolet, Inc.  
Henry & Christine Happel  
Graham & Karen Haslam  
Crystal Hochhaus  
Kae R. Hutchison, Ph.D.  
IBM International Foundation  
Michael R. James  
Aaron E. Kornblum  
Karl J. Korsmo  
Matheus Lumber Co.  
David Mentz & Pamela  
Smith Mentz  
Opinion Research  
Corporation  
Beverly J. Peterson  
Sasha Press  
Thomas W. Pritchard  
Pro Sports Club  
Raskin Partners, LLC  
Rick Burnstead  
Construction Co.  
Robin M. Riveland  
John & Jane Sacia  
Laura Saunders

*If you would like to make a donation,  
please contact the BCC Foundation  
at (425) 564-2386, use the attached  
envelope, or make your gift online at  
[www.bcc.ctc.edu/foundation](http://www.bcc.ctc.edu/foundation).*

The following list reflects combined totals for donations, pledges and sponsorships made to the BCC Foundation for the 2005-06 fiscal year, ending June 30, 2006. In preparing this report every effort was made to ensure accuracy. If we made an error in your listing, we apologize. Please call the BCC Foundation office at (425) 564-2386 regarding any changes to this list.

Bellevue Square  
Martin & Beth Bentrott  
Donald L. Bloom  
Carolee Danz  
David & Cathy Habib  
Foundation  
ETS  
B. Jean Floten  
Gall Landau Young  
Construction  
Group Health Cooperative  
Michael Humphries &  
Judith Ralston  
Institute for Cultural  
Exchange, Inc.  
KIXI-AM (880 AM)  
Meridian Partnership  
Microsoft Matching  
Gifts Program  
Mutual Materials Co.  
Paul & Denise Nordlund  
North Coast Electric  
Company  
Daniel C. Olson  
Pan Pacific Electronics, Inc.  
Peg & Rick Young Foundation  
Puget Sound Energy  
Sandusky Radio (KIXI FM)  
Silver Cloud Inns & Hotels  
Joseph & Elizabeth Sims

## **Stewards (\$1,000-\$2,499)**

BearingPoint, Inc.  
Paula Boyum  
Darren & Linda Brady  
Margaret E. Brown  
Burnstead Construction  
Paula Butzi  
Michael Casey  
Cherry Pie Media  
Communiversity  
Services, Inc.  
Linda K. Courter  
John Danielson  
Emer Dooley  
Betty & Kemper Freeman  
The Jerry & Melissa  
Gallegos Foundation  
Glenhome Trust  
Donald & RoeJean Grant  
H.D. Fowler Company  
Catherine L. Harkleroad  
James Harryman  
Kazuto Hatakeyama  
Steven Hazlerig &  
Barbara Ciapala  
Lawrence C. Hebner  
Gaynor Hills & Greg Fleming

Thomas Nielsen &  
Kenny Carlson  
Norton Sound Ventures LLC  
William & Joan O'Connor  
Douglas Ortega  
Pilchuck Contractors, Inc.  
Risk & Insurance Manage-  
ment Society, Inc.  
George & Debra Rowley  
William & Linda Scott  
ShareBuilder Corporation  
Dennis & Susan Shay  
James D. Sinegal  
Richard Spady  
Jeff Staubach  
Kathleen & Larry Steele  
Joe & Dee Strecker  
Carol & Mark Taylor  
Patricia Thrall  
Trammell Crow Company  
Washington Trust Bank

## **Investors (\$500-\$999)**

Roger & Mary Anderson  
Bank of America  
Bentall Capital, LLC  
George P. Brace  
Clark College



Kass Sells  
Kathryn M. Shields  
Social Security  
Administration  
Squaxin Island Tribe  
Standing Ovation  
Douglas Sykes  
Tacoma Longshoremen  
Credit Union  
Seth & Aline Taylor  
The Diane M. Horwitz  
Memorial Foundation

The UBS Foundation  
GivingStation  
Wallace Properties Inc.  
Kerry & Cheryl Wate  
Gerry & Cecilia Watson  
Jennifer Wesselius

### Supporters (\$100-\$499)

Diana Aakervik  
Richard Adams  
Robert & Susan Adams  
Peter & Kristi Adler  
Beverly R. Akada  
John W. Aldrich  
Rosemary K. Allen  
Ron & Virginia Allison  
Kendall Anderegg  
James E. Anderegg  
Denny Andrews  
Julius B. Armstrong  
Ash Family Foundation  
Cody Baehr  
Steve & Sue Bailey  
Lynn K. Bain  
John L. Baldwin  
Jeff Bander  
Bryan & Tiffany Barbre  
Andrew P. Barlass  
Peter Barnes  
Ellen E. Barnum  
Shiv Batra  
Suzanne & Bruce Baugh  
Robyn Bell-Bangerter  
Allan Belton  
Samir Belyamani  
Alan R. Bender  
James L. Bennett, Ph.D.  
Rondi Bennett  
William D. Biggs  
Bill & Melinda Gates  
Foundation Matching  
Gifts Program  
Roxanne H. Bilski  
Bill & Penni Blakely  
Carrie & Will Blanton  
Scott Blaufeux

Gary Brown  
Bruce & Rhonda Brown  
Dean Buchanan  
Robert Buck  
Gerald W. Bunce  
Terry Burns  
Bob Calaff  
Mary J. Canan  
John Cantalupo  
Reuven Carlyle  
Joyce Carroll  
James R. Cavin  
Mary H. Chambers  
Jayoung Choi  
Jeffrey & Janece'  
Christianson  
Judith Clibborn  
Rick & Bonnie Collette  
Robert Collins  
Colleen Crowley  
Larry Curnutt  
Gavin Johnson  
Mark D'Arcy  
Donald S. Davidson  
Mike De Laurentis  
Annette de Soto &  
Alvan Ikoku  
Terry Deeny  
Darlene Deeny  
Guy A. DeFlorio  
Bruce C. Dennis  
Marisa DiGiacomo  
Rita E. Dillon  
Patricia Dombrowski  
David & Sheryl Douglas  
Cheryl L. Ebner  
Jan Edmondson  
Jim Ellinger  
Elise & Gregory Erickson  
Luke Esser  
Neil Evans  
Expedia  
Laura C. Feinstein  
Lyn Fenton  
Holly Finkbeiner  
Mark A. Finkelstein  
Steve L. Firman  
Monica M. Fix

Dale Gleason  
Karen Godfrey  
Michael Goo  
Ronald & Suzanne Gould  
Dana Gray  
Sally J. Gray  
Matthew Groshong  
Robert P. Guilbeault  
Jay D. Gusick  
James A. Haas  
Jane M. Hague  
Alice & Keith Haines  
Donna M. Haire  
Catherine E. Hall  
Christine K. Hall  
Dianne Harbolt  
Van Hardy  
Michael J. Healy  
James D. Hebert  
Jerry L. Henry  
Judie Herrera  
Highland Construction  
William Hill  
Dale T. Hoffman  
Mike Honaker  
Ky Hopewell  
Bradley J. Horwitz  
Rep. Ross Hunter  
Kathi Hutchins  
Dan Jardine  
Fred Jarrett  
Robin L. Jeffers  
Carol Jenkinson  
David C. Jensen  
John L. Scott/HWP  
Cynthia A. Johnson  
Janice G. Johnson  
Jeffrey H. Johnson &  
Lorie Dankers  
In memory of Cambria  
Quinn Jones  
Jeri Jump  
Todd C. Juvrud  
Publicis West  
Katherine Coonrad Apparel  
Meredith W. Kenyon  
Gaguik Khachatourian  
Michael R. King

Conrad S. Lee  
Deborah L. Lewis  
Michael T. Littlefield  
Nathan L. Lorange  
Jon G. Lowe  
Beverly Lucas  
Elizabeth S. N. Lyons  
Leo Madden  
Magnolia Lane, LLC  
Magnum Associates, Inc.  
John J. Maguire  
Henry Mah & Grace Palisoc  
Joel, Tess & Kamaile Marcus  
Bob Margulis  
Bill & Barbara Marshall  
Chris Massot  
Dave & Veronica Mayo  
Ray & Ruth Mazzoni  
Casey & Joan McCarty  
Susan McLain  
Geoffrey P. McMahon  
Charles R. McNulty  
Neil & Nancy McReynolds  
Sally Meijssen  
Gary P. Melonson  
Dan Menser  
Doug Miller  
Robert E. Miller  
Barbara A. Miller  
David Miller  
Mirai Associates, Inc.  
Andrew D. Mirkovich  
Charles O. Morgan  
Gloria Moses  
Ed Mott  
Ken Myer  
Robert Nash  
Haji Nazarian  
David Neher  
Asha Nelson  
Andree & Ken Nelson  
Susan G. Nokes  
Leigh N. Nye  
David Oar  
James F. Oekey  
Timothy R. O'Hara  
Katherine Oleson  
Dean W. Olmstead  
Sigrid Olsen

Jerry & Janice Oppliger  
H. Cyrus & Feryal Oskoui  
Jill Ostrem  
Edward P. Palmer  
Lynn M. Parker  
Fred & Michele Paulsell  
Joel P. Payne  
William Payne  
Brian A. Pearson  
Thornton A. Perry  
James S. Peterson  
Phil Lucas Productions, Inc.  
Rolfe Philip  
Sandra Phillips  
Noreen Plath  
Kirk Portman  
Barbara Proehl  
David Pryde  
William Ptacek  
Quality Business  
Systems, Inc.  
Quest Diagnostics  
Steve Ramsey  
Recreational Equipment Inc.  
Laura Rehrmann  
James M. Reynolds  
Rosemary Richardson  
Debra Richman  
Toni J. Richmond  
Michael N. Riley  
Suellen Roche  
S. Michael Rodgers

Michell & Paul Rodriguez  
Faith & Richard Roland  
Gail Romero  
Andrea L. Rose  
John M. Rose  
Debra Ross  
Vicki L. Ross  
Nancy Rounds  
Safeco Insurance  
Lynne S. Sage  
Robert Sandblom, MD  
Anne Saunders  
Josiah T. Savage  
Warren Scholl  
David L. Schooler  
Mark Schuetz  
Mark D. Schultz  
Steve J. Schwartz  
Judith Searles  
Bob & Lawson Sebris  
Fred & Susan Shanafelt  
Tom Shannon  
Craig Shrontz  
Basant Singh  
Stephanie Sloan  
Jason Smith  
Scott A. Soley  
Jeffrey L. Spears  
Larry S. Springer  
Kurt Springman  
St. Augustine Art Assoc., Inc.  
Alex Staddon-Smith  
Gloria Moses  
Donald & Nancy Stenquist  
Rietta C. Stoneman  
Byron M. Stuck  
Jack Surendranath  
Phillip F. Sweetland  
Paul A. Swegle  
Symantec  
Kara Talbott  
Michael L. Talbott  
Theresa Tamura  
Lucinda A. Taylor  
Mark H. Taylor  
Kit S. Taylor  
The Community Foundation  
Katherine Thompson  
Drew Thoresen  
Michael Trail  
Margaret Turcotte  
Elaine C. Tuttle  
USArchive & Imaging  
Services  
Lloyd & Myra Van Vactor  
Vander Hoek Corporation  
Cheryl A. Vermilyea  
Chris Vicente  
Michael R. Vila  
Arkadiy Voskanov  
Ralph Walker  
Washington Mutual  
Matching Gift Program  
Michael D. Wearne  
Kristina & Thomas Weir  
Norma B. Whitacre  
Veronica Whittaker  
Peter & Patti Wiedemann  
Matthew Wilks  
David J. Williams  
Corey S. Williams  
Verna M. Willis  
Denise Wockner  
Gorman K. Wong  
Shauna C. Woods  
Gavin Yu & Jennie Yu Wang  
In memory of Mary  
Foley Pacheco

# Pass Your Values on to the Next Generation

A gift to BCC is an investment in  
tomorrow's workforce and your community.

[plannedgiving@bellevuecollege.edu](mailto:plannedgiving@bellevuecollege.edu) [www.bcc.ctc.edu/foundation/](http://www.bcc.ctc.edu/foundation/)

Sweet Home House-  
cleaning Services  
Marc A. Boman  
Judy Bonheur  
Donald Boothby  
Joseph Bowen  
Tacy Bowers  
Shaun P. Bowlby  
Paul W. Boyer  
Carl R. Brandenburg  
Daniel A. Breard  
Barbara Brodsky

Sheri L. Flies  
Linda D. Flory-Barnes  
Jane V. Foster  
Cheryl Freeman Larijani  
Kevin Gabelein  
Janet Gaines  
Jerry & Melissa Gallegos  
Dave Gamrath  
Councilmember Don Gerend  
Bruce N. Gilbert  
Thomas S. Giovanelli  
Gary W. Glasscock

Rob Klee  
Stephen & Carol Klein  
Alfred Koury, Jr.  
Meredith Kraike &  
David Regal  
Seema Kumar  
Ruthann Kurose  
Sherry Ladd  
Laurel LaFever  
Robert A. Lampson  
Ryan Landon  
Kathleen Langenheim

**Friends of BCC  
(Up to \$100)**

Elizabeth L. Anderson  
Shannon M. Axthelm  
Linda Ayers  
Sherri Ballantyne  
Adele Becker  
Bart Becker & Enid  
Smith Becker  
Mark R. Beppler  
Jason & Michele Bergstrom

Dennis Herman  
W. B. Howard  
Kelly Hudgins  
Rusenja & Michael Ingram  
Sandra M. Jacobson  
Natarajan Janarthanan  
Sudhir Jobanputra  
Jacci A. Johnson  
Howard & Judy Johnson  
Robert & Annette Jones  
Joseph Keenan  
Ben Kerbaugh

Kate Pesin  
Judy Petersen  
Rose L. Pugh  
Farokh Rahmani  
Melissa Reese  
Marika A. Reinke  
Bruce & Robin Riveland  
Thomas J. Riza  
Bryan Routon  
Michele Royer  
Gatis Roze  
Robert Rushton

**2005-2006  
Memorial Donations**

**In memory of  
Jennie Delisi**

Pamela E. Baumann  
Adele & Donald Delisi  
Jeralyn Delisi Lowe  
Linda E. Eblen  
Harold S. Gazan  
Cynthia C. Johnson  
Sue K. Johnston  
Donguole O. Majauskas  
Margie Gould Boucher  
Interiors  
Gary & Linda Marshall  
John S. Nicon  
Northwest Research  
Associates  
John K. Orr  
Denis Redinger  
Linda & Nick Scott  
Joanne Smetak  
Marsha P. Smyth  
St. Augustine Art Association, Inc.

**In memory of  
Stefan Golston**

W.B. Howard  
Irene Lichtenstadter  
Marolyn M. Mahon  
Joyce L. O'Keefe  
Curtis & Dorothy Orr  
Wilma C. Reed  
Dorothea Schottlander

**In memory of  
Joan Ubezzi**

BCC Imaging Faculty & Staff  
JoAnn Bott  
Lee Benezra

**In memory of  
Isbel Trejo**

Agnes Figueroa  
Teri Hull

**2005-2006  
Honorary Donations**

**Tika Esler Latino/  
Latina Scholarship**

Sherri Ballantyne  
Carol M. Foltz  
Jane V. Foster  
Lucy Parke Macneil  
Sally Meijsen  
Thomas Nielsen &  
Kenny Carlson  
Beverly J. Peterson  
Arthur & Ella Sirjord  
Vicki K. Wood

**Legacy Society**

Charles (Bill) &  
Dorothy Billington  
Robert & Jean Cunnison  
Norman Stromer  
Frank & Susan Young

**Named Scholarships  
and Endowments**

Art Ershler Basketball  
Scholarship Fund  
Aoyama Family Scholarship  
for Women Endowment

Bergstrom Family  
Scholarship  
The Boeing Company  
Scholarship  
Bushnell Scholarship  
Charlotte Field Interior  
Design Scholarship  
Endowment  
Courter Family Interior  
Design Scholarship  
Endowment  
Cunnison Nursing Schol-  
arship Endowment  
James & Sandra Dagnon  
Scholarship Endowment  
Vasantha C. Daniel Nursing  
Scholarship Endowment  
East Lake Audubon Society  
Brian Gershon Scholarship  
Tika Esler Latino/  
Latina Scholarship  
Gloria Owens Polis Schol-  
arship Endowment  
Group Health Employee  
Scholarship Endowment  
Habib Mathematics  
Scholarship Endowment  
Hoffman Math Scholarship  
Jack Perry Scholarship  
Endowment

Kay Bell Scholarship  
Endowment  
Kvinsland Memorial Fund  
Larry McCoy Memorial  
Scholarship  
Lee Kraft Scholarship  
Endowment  
Lockwood Foundation  
Faculty Excellence Fund  
Lori Rhett Memorial Child  
Care Scholarship  
Markie Miller Memorial  
Scholarship  
Miles Matsuda Memorial  
Scholarship  
Nancy Bean Costco  
Information Technology  
Scholarship Endowment

Naomi & Claude Newbury  
Scholarship Endowment  
The Norman & Camille  
Stromer Endowed  
Scholarship  
Overlake Hospital Student  
of Color Scholarship  
Endowment  
Paros ESL Scholarship  
Polly Shultz Whitehead  
Scholarship  
Ravindra K. Agrawal  
Scholarship Endowment  
Risk Management Certi-  
fication Scholarship  
Ruthann Kurose Minority  
Scholarship Endowment

Sandusky Radio Scholarship  
The Seattle Times Company  
Scholarship Endowment  
Setsuko McDermott  
Scholarship Endowment  
Swedish Hospital Student  
of Color Scholarship  
Endowment  
Vijay & Sita Vashee  
Single Parent Schol-  
arship Endowment  
Windermere Foun-  
dation Endowment

**How Can I Help?**

Use the envelope attached to this report to make your gift to the Bellevue Community College Foundation! On behalf of the students, faculty and staff of BCC, we thank you.



Students like Nikoleta Kelcheva need your help to open doors of opportunity.

Janet Best  
Chris Black  
Kari P. Block  
Wendy A. Brault  
Darby Broyles  
Constance & Ronald Brunell  
Sandra M. Buchanan  
Nicholas P. Bull  
Matthew A. Corey  
Dennis Craig  
James J. Davis  
Linda Del Monte  
Frederick J. Dickey  
David & Toshimi Dorrattcague  
Mildred Douthit  
Brian J. Ducey  
Nancy K. Dunham  
Emma Dye  
Eastern Washington  
University Foundation  
Nicole & Brad Eidsvoog  
Federated Department  
Stores Foundation  
Feinberg Foundation  
Bette Felton  
Sue Ferguson  
Becky L. Flarity  
Carol M. Foltz  
Carol Forte  
Lynn M. Frair  
Larry Gangloff  
Mary Gegus  
John Giaever  
Janet Gillen  
Susan L. Gjolmesli  
Debra Golden  
George W. Goldsberry  
Roberta K. Gray  
John Grein  
Roneida & Timothy Griffith  
In memory of Gerry Maki  
Rebecca & Charles  
Hagenbaugh  
William H. Hall  
Susan M. Hampson  
Michael Harder  
Shelia A. Harrington  
Justin A. Hart

King Family Trust  
Kristina Kipping  
Peter M. Kirov  
Angela Korvas  
Jan Ashley Kuhn  
Judy Kuskin  
Guy LaFontaine  
Evelyn Lane  
Paula Lank  
Joanne Lauterjung Kelly  
Judd H. Lees  
Ben Leonard  
Brooke B. Leonard  
Phillip Levine  
Maureen E. Little  
Yongjie & David Locker  
Edward J. Lowe  
Elizabeth Parker Lyon  
Abdolre Maftoun-Smmani  
Marolyn M. Mahon  
Nancy & Stephen Matthews  
Fred Matthews  
Steven McBride  
Teresa McClane  
Deana G. McCommon  
Gregory L. Milner  
Linda Moore  
Jerry H. Moos  
Philip Mortenson  
Fabienne Mouton  
Margaret Murphy  
David Naro  
Joel Nemerover  
Ronald L. Newman  
Jan M. Ng  
Lizette Nieves  
Annie Norberg  
Sharon O'Grady  
Consuelo R. O'Leary  
Richard L. Otte  
Bruce W. Parks  
Patti Partington  
Richard M. Paterson  
Hunter Penrose  
Pepsi Bottling Group  
Foundation, Inc.  
Elizabeth F. Perera

Jacqueline Said  
Chris Sanders & Susan  
Boundy-Sanders  
Mark L. Sandstrom  
Douglas M. Sankwich  
David Schaefer  
Sara N. Schmidt  
Linda & Nick Scott  
Arja Scott  
Christopher M. Shelley  
John R. Shields  
Michael Shinn  
Kent S. Short  
Rene Siegenthaler  
Arthur & Ella Sirjord  
Susan M. Smith  
Derek & Katherine Snead  
Michele D. Spackman  
Celinda Spaulding  
Janet Spindler  
Leonard Stephan  
Sterling Realty Organization  
Antoinette N. Suyama  
George & Patricia Swinford  
Robert & Jean Tank  
Carol & James Tanner  
Linda Thomas  
Deborah C. Townsend  
Juan Ulloa  
Sylvia Unwin  
Karen Vander Hoek  
Herb W. Wallen  
Louis & Georgia Watanabe  
Ellen Whaley  
Vicki Wheeler  
Paul M. Wiegand  
Douglas L. Williams  
Williams Companies Inc.  
Williams, Kastner  
& Gibbs PLLC  
Karen Wilson  
Judith M. Witmer  
Vicki K. Wood  
Ted W. Yellman  
Elmira Yusupova  
Andrew R. Zaborski



**To support exceptional programs and students at BCC through your gift or personal involvement:**

- Contact Gaynor Hills, Executive Director, Bellevue Community College Foundation, at (425)564-2282 or ghills@bcc.ctc.edu

**To enroll:**

- Visit [www.bellevuecollege.edu](http://www.bellevuecollege.edu), email [admissions@bcc.ctc.edu](mailto:admissions@bcc.ctc.edu), or call (425) 564-2222

**For Continuing Education programs:**

- Visit [www.gotobcc.com](http://www.gotobcc.com), email [conted@bcc.ctc.edu](mailto:conted@bcc.ctc.edu) or call (425) 564-2263



**Vision:** Bellevue Community College will continue to be the region's college of choice, based on its excellence, innovation, and national recognition for exemplary programs.

**Core Values:** We, the Board of Trustees, faculty, staff and administration of Bellevue Community College, place students at the center of all we do and support and promote the excellence of their efforts. We affirm and embody pluralism, value collaboration and shared decision making, and honor creativity and innovation. We consider it our duty to anticipate changing demands in education and welcome the opportunity to shape its future. We acknowledge our responsibility to society and embrace the belief that widespread access to excellent postsecondary education is the cornerstone of a democratic society.

**Mission:** Bellevue Community College is a comprehensive and innovative college that advances the life-long educational development of its students consistent with their needs, interests, and abilities, while strengthening the economic, social, and cultural life of its diverse community. The college accomplishes this purpose by providing high-quality, flexible, educational programs and services that are academically, geographically, and financially accessible. Committed to teaching and learning excellence and employee growth and development, the college nurtures a supportive environment throughout its programs and services.

**Goals:** Access to Education ○ Professional & Organizational Excellence ○ Student Success ○ Financial Sustainability ○ Pluralism ○ Teaching & Learning Excellence ○ Technology Leadership ○ Institutional Accountability ○ Community Leadership & Partnership

Bellevue Community College and  
Bellevue Community College Foundation  
3000 Landerholm Circle S.E.  
Bellevue, WA 98007  
[www.bellevuecollege.edu](http://www.bellevuecollege.edu)

Bellevue Community College reaffirms its policy of equal opportunity regardless of race, color, creed, religion, national origin, sex, sexual orientation, age, marital status, disability, or status as a disabled veteran or Vietnam era veteran. For further information, please visit [www.bcc.ctc.edu/equal.asp](http://www.bcc.ctc.edu/equal.asp).

