



 Foundations
 for  Divergent PRESENTS
 Minds

You Need Us: Centering Our Values is a Must in Evidence Based Practices

About Us

OSWIN LATIMER

**Founder of Foundations
for Divergent Minds**

Autistic adult

Autistic parent

10+ years Autistic activist

Autistic Consultant





What are Evidence-Based Practices?

IT IS IMPORTANT FOR PRACTITIONERS TO PAY ATTENTION TO THEIR CLIENT'S VALUES, TO KNOW WHAT WORKS FOR THEM. IN THIS CASE, LISTENING TO AUTISTIC VOICES

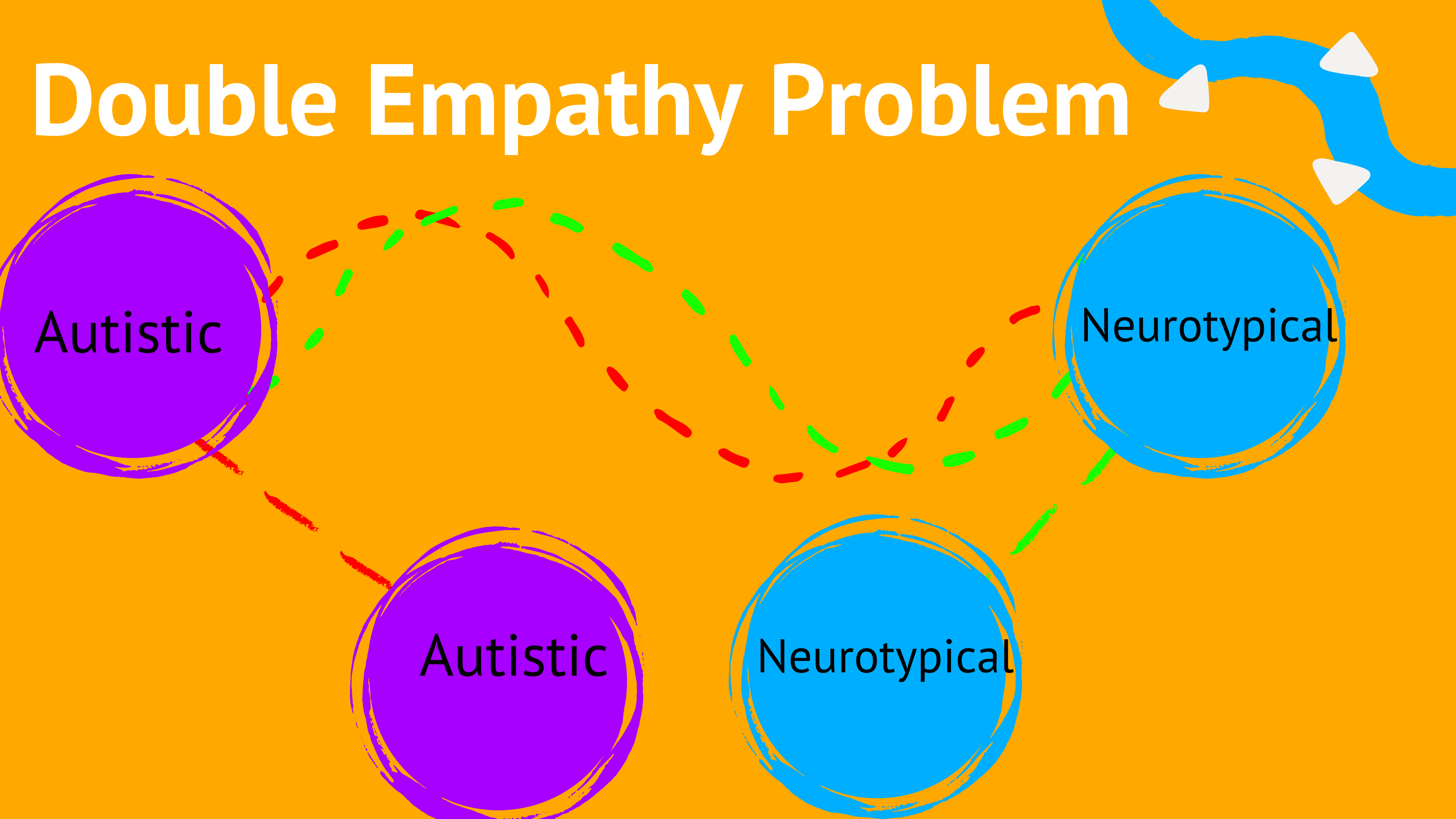
Autistics are the experts



Autistics ARE the experts
Autistic individuals are the experts on their own lives, their experiences, and more. It is necessary to actively listen to them to be able to see and appreciate experiences from their perspective



Double Empathy Problem



Social Supports



Interest Areas

Developing social scripts

Self Advocacy

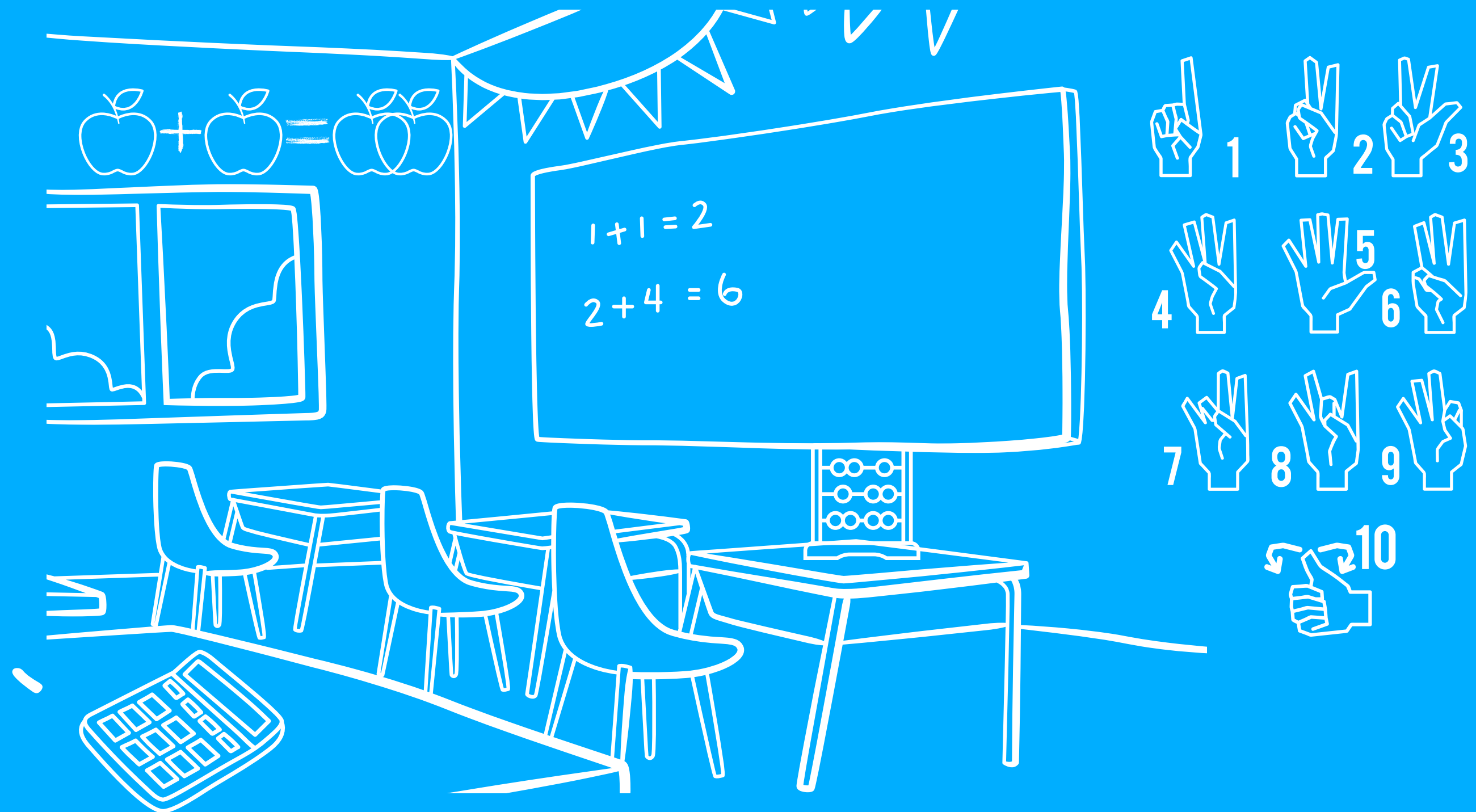


Monotropic Cognition

Learning Styles

A cognition style where the individual has the tendency to focus attention on one thing at a time. There is difficulty in shifting attention and processing multiple stimuli

Teaching through Immersion



Questions



Stay Connected!

www.divergentminds.org

contact@divergentminds.org

[www.facebook.com/Foundations
forDivergentMinds](https://www.facebook.com/FoundationsforDivergentMinds)

Slide presentation by Jennifer Mutnick-Andes
and Oswin Latimer