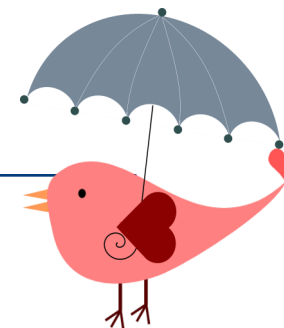


September 2022



Mark your personal calendar with these dates!



Schedule

- September 19: First day of Fall Quarter classes. **Log onto online** classes, go to on campus Monday classes, go to Monday peer mentor meetings.
- September 23: Last day to drop for 100% refund
- September 30: Last day to withdraw without "W" on transcript

Sun Mon Tue Wed Thu Fri Sat

				1	2	3
4	5	6	7	8	9	10
11	12	13	14	15	16	17
18	19	20	21	22	23	24
Week 1	First day of classes!				Last Day for 100% refund	
25	Come to class!			28	29	30
Week 2					Last Day to Withdraw without "W" on transcript	/

Did you know?

Students who regularly attend peer mentor meetings have higher GPAs and report feeling more connected at college?

Put your peer mentor meeting on your calendar and set reminders!

Connect with us if you run into barriers!

Neurodiversity Navigators at Bellevue College

Bellevue College

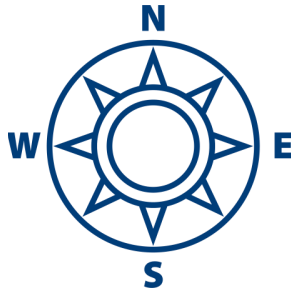
3000 Landerholm Circle SE, Mailstop B131

Bellevue, WA 98007

Building B, B131

Phone: 425.564.2764

Email: asn@bellevuecollege.edu



October 2022



Mark your personal calendar with these dates!

Schedule

- October 7, Last day to withdraw for 50% refund; with a "W" on transcript
- October 17: Professional Development Day, NO classes, NO meetings
- October 19: **Parent & Support Person Meeting** 6:30 - 8 p.m., Zoom, no students

Are you attending Study Halls, Tutoring, or the Writing Center?

These resources will support your success! Your peer mentor can help you connect.

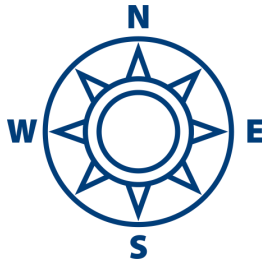
Sun	Mon	Tue	Wed	Thu	Fri	Sat
2 Week 3	3	4	5 Yom Kippur	6	7 Last Day for 50% refund	8
9 Week 4	10 Sukkot	11 INDIGENOUS PEOPLE DAY	12	13	14	15
16 Week 5	17 PD Day NO Classes NO Meetings!	18	19 Virtual Parent Meeting 6:30 - 8 p.m.	20	21	22
23 Week 6	24	25	26	27	28	29
30 Week 7	31	1	2	3	4	5



Neurodiversity Navigators at Bellevue College

Bellevue College
3000 Landerholm Circle SE, Mailstop B131
Bellevue, WA 98007

Building B, B131
Phone: 425.564.2764
Email: asn@bellevuecollege.edu



November 2022

Mark your personal calendar with these dates!



Schedule

- November 10: **Priority Registration**
- November 11: Veterans Day, No Classes, No Meetings
- November 12: Last day to withdraw (will receive "W")
- November 14: Regular Registration appointments begin
- November 24: National Day of Mourning; No Classes, No Meetings
- November 25: Break: No Classes, No Meetings



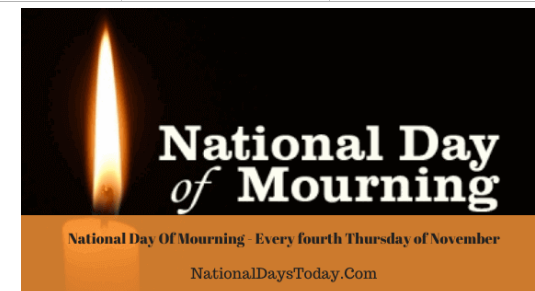
Work with your **Peer Mentor** and **Academic Advisor** to **choose classes** and **Register!**

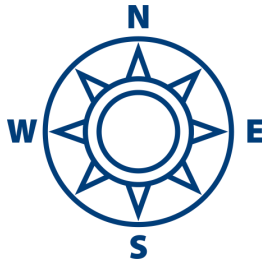
Sun	Mon	Tue	Wed	Thu	Fri	Sat
30 Week 7	31	1	2	3	4	5
6 Week 8	7	8	9	10 Priority Registration	11 NO MEETINGS NO CLASSES	12 Last day to withdraw (will receive "W")
13 Week 9	14 	15	16	17	18	19
20 Week 10	21	22	23	24 NO CLASSES	25 NO CLASSES	26
27 Week 11	28	29	30	1	2	3

Neurodiversity Navigators at Bellevue College

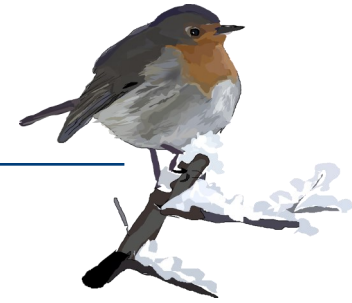
Bellevue College
3000 Landerholm Circle SE, Mailstop B131
Bellevue, WA 98007

Building B, B131
Phone: 425.564.2764
Email: asn@bellevuecollege.edu










December 2022



Mark your personal calendar with these dates!

Schedule

- December 6-8: **Final Exams**
- December 13: Grades posted to transcript
- December 14: Last day to send course changes to NdN - changes and additions **cannot be accommodated** after this time because staff and meeting space schedules must be made
- January 3:** Winter Classes begin

Sun	Mon	Tue	Wed	Thu	Fri	Sat
4 Finals Week	5 Student Success Day—meet with faculty	6 <i>Final Exams</i>	7 <i>Final Exams</i>	8 <i>Final Exams</i> Last Day of Fall Quarter	9	10
11	12	13 GRADES POSTED to TRANSCRIPT	14 Last day to send course changes to NdN	15 		17
18 	19	20	21	22	23 College closed	24
25 	26 College closed 	27	28	29	30	31 



Neurodiversity Navigators at Bellevue College

Bellevue College
3000 Landerholm Circle SE, Mailstop B131
Bellevue, WA 98007

Building B, B131
Phone: 425.564.2764
Email: asn@bellevuecollege.edu